

IMAQulate
Newton Fund Aquaculture GRP



Department of
BioTechnology,
Government
of India

सत्यमेव जयते

 **Newton
Fund**



Department
for International
Development

SHRIMP HEALTH MANAGEMENT

Hazrat Ali, Ahmed Jaman, Meezanur Rahman

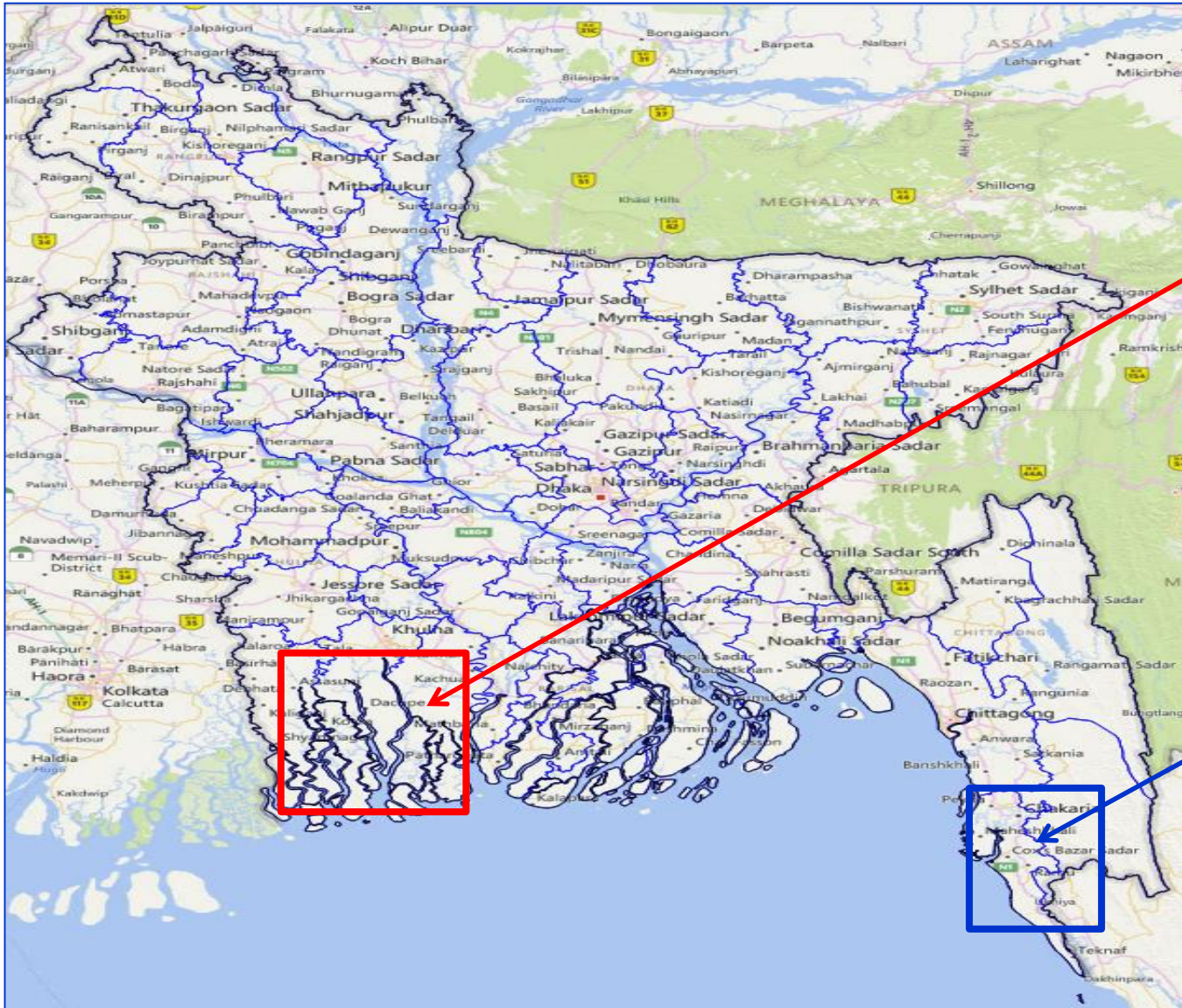
WORLD FISH BANGLADESH



PRESENTATION OUTLINE

- Seed production and farm locations
- Shrimp farming system overview
- Shrimp health management survey
- Sample frame development
- Data collection
- PHP use pattern at farm level
- Health management in hatchery and nursery
- Hatchery health products

HATCHERY AND FARM LOCATIONS



Grow-out farms

Hatchery (mainly)

SHRIMP FARMING SYSTEM OVERVIEW

- **Intensive-monoculture**
- **Extensive-polyculture with other fish**
- **Semi-intensive-polyculture with prawn and other fish**



SHRIMP HEALTH MANAGEMENT SURVEY

Sample frame development

- Intensive shrimp farms-124
 - Farm source: DoF, CP, KI, Google earth



- **Extensive shrimp farms-331 (SEAT 2011, 3 clusters)**
- **Semi-intensive shrimp farms-294 (SEAT 2011, 3 clusters)**

Farm scale criteria	Small	Medium	Large
Farm area operation (ha)	<0.80	0.80-2.0	>2.0
Land ownership	Own	Own/leased in	Own/leased in
Management	Household or extended family	Household or salaried manager	Salaried manager
Full time labor (non-family)	No	No or Yes	Yes

DATA COLLECTION

- **Semi-structured QS used for data collection**
 - Farm and interviewee details (GPS location)
 - PHPs and other chemicals uses pattern
 - Production characteristics
 - Diseases
 - Water quality and management
 - Production costs
 - Farmer knowledge level
 - Biosecurity observation
 - Salinity level
- **Data collection was focused on last summer crop (2017)**

- 3 day long training session organized for data enumerators including field test
- Data collection period: 12th October-27th December 2017
- Intensive shrimp farms as much as possible
- Extensive and semi-intensive farms were randomly selected, random numbers were generated by using following website- <https://www.random.org/>

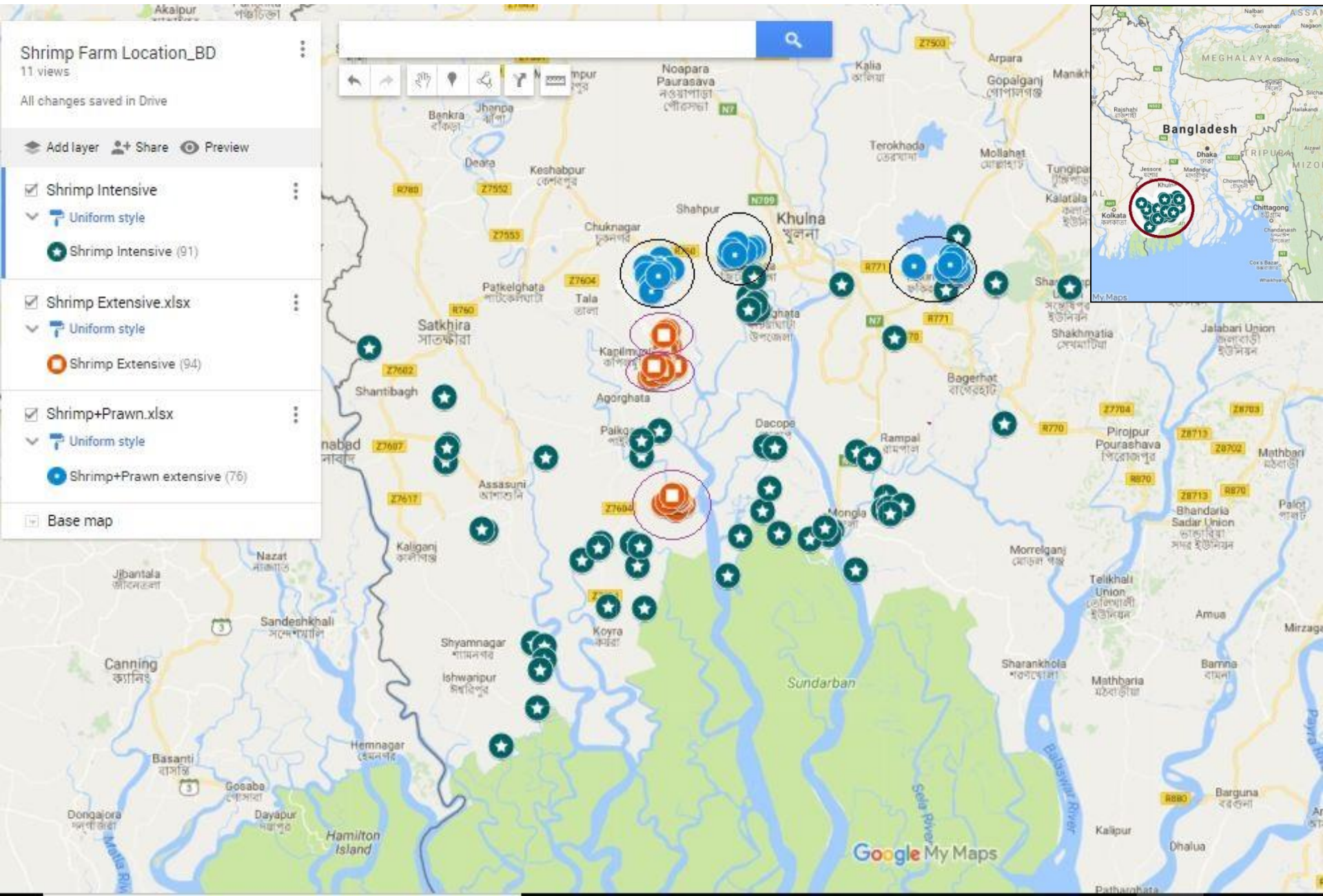


NUMBER OF FARMS SURVEYED

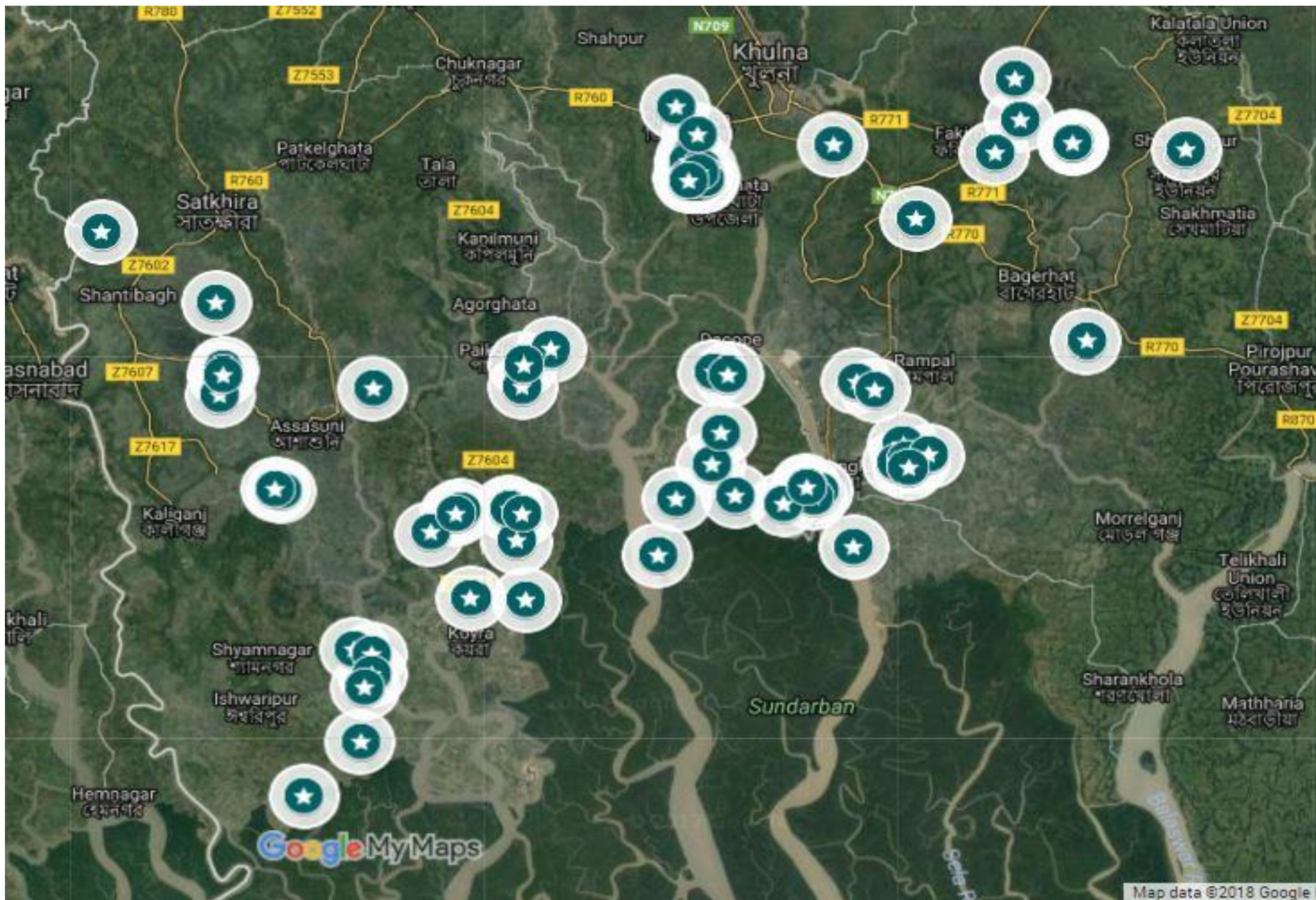
Technology	Cluster	# of farm recorded	# of farm surveyed
Intensive shrimp	SW BD	124	91
	Extensive shrimp		
	Magurkhali	112	27
	Putimari	110	34
	Bashakhali	109	33
	Sub-total	331	94
Semi-intensive shrimp and prawn			
	Faltita	110	30
	Godown		
	Kultola	84	31
	Gutudia	100	15
	Sub-total	294	76
	Total	749	261

Farm Scaling	Intensive shrimp	Extensive shrimp	Semi-intensive shrimp and prawn	Total
Small	--	39	52	91
Medium	--	35	20	55
Large	--	20	4	24
Total	91	94	76	261

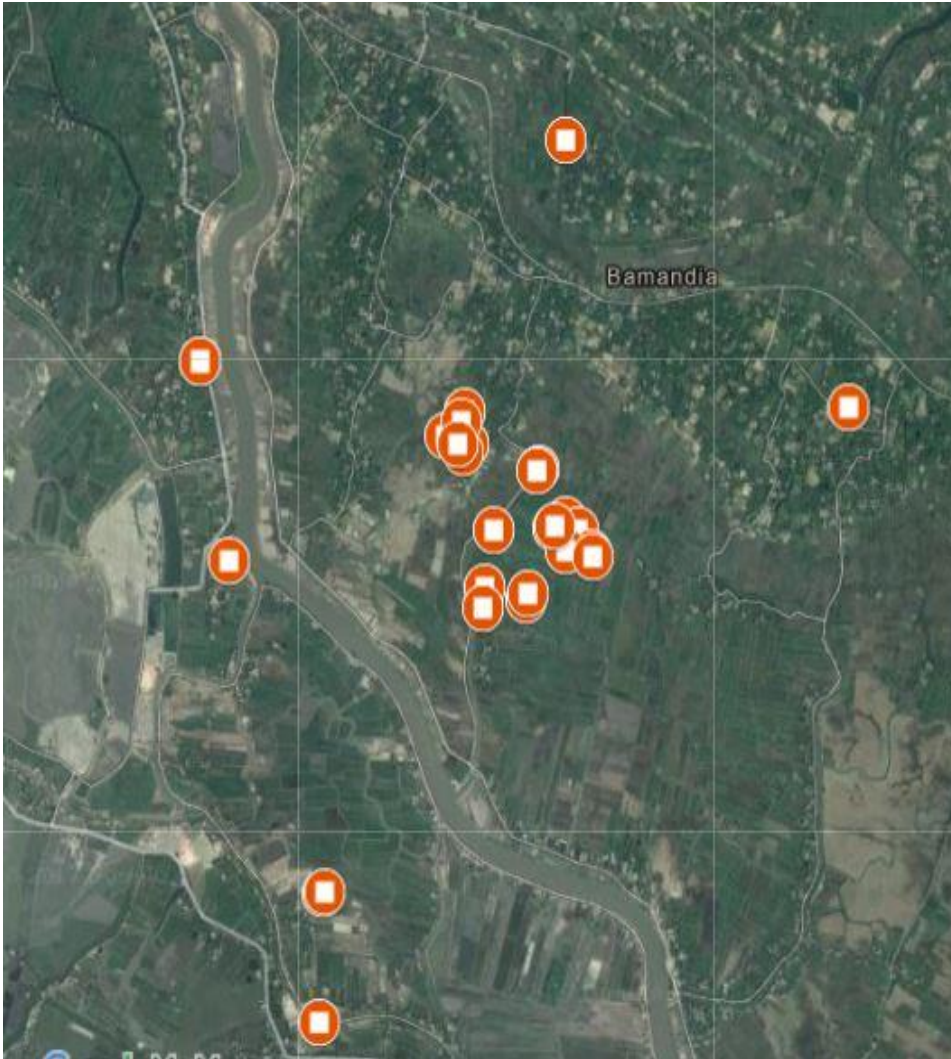
LOCATION OF SURVEYED FARMS



LOCATION OF INTENSIVE FARMS



LOCATION OF EXTENSIVE AND SEMI-INTENSIVE FARMS



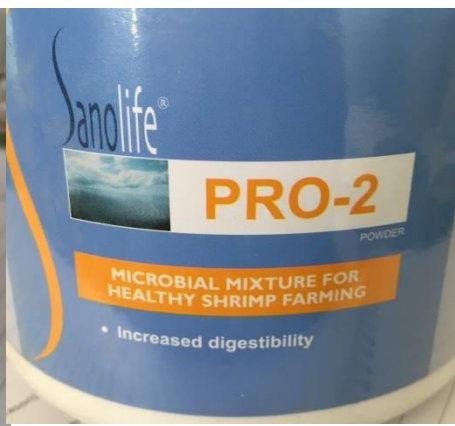
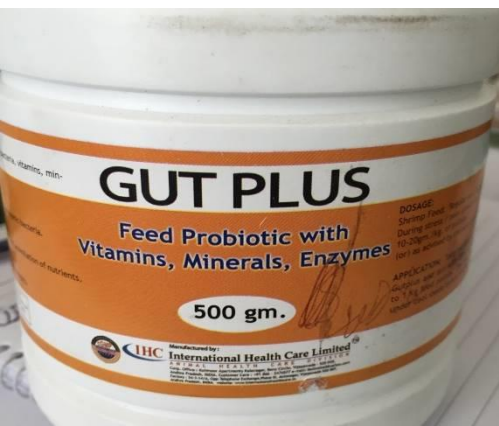
Extensive shrimp



Semi-intensive shrimp and prawn

PHP USE PATTERN AT FARM LEVEL

- Extensive shrimp/semi-intensive shrimp and prawn farms rarely use PHPs
- Intensive shrimp farms routinely used PHPs mostly as preventative measure
 - Water and soil probiotics
 - Gut probiotics
 - Immunostimulants
- Mainly follow PHPs supplier technician instructions



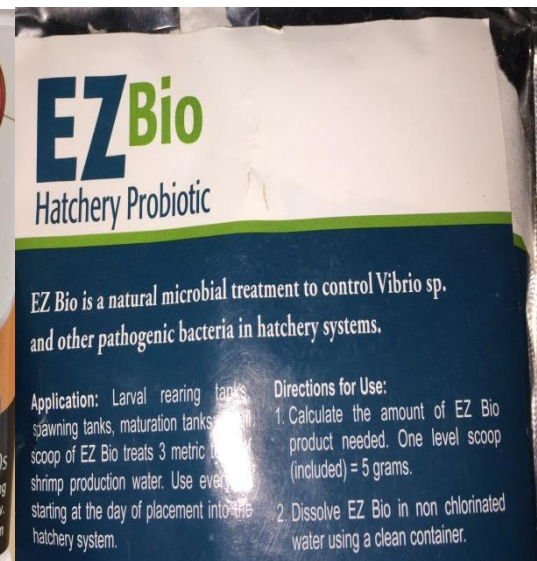
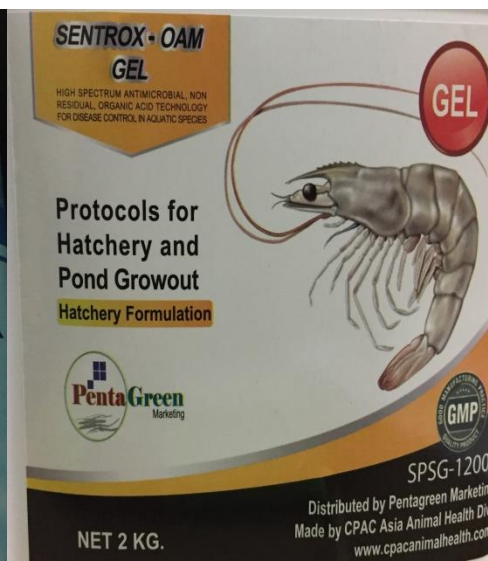
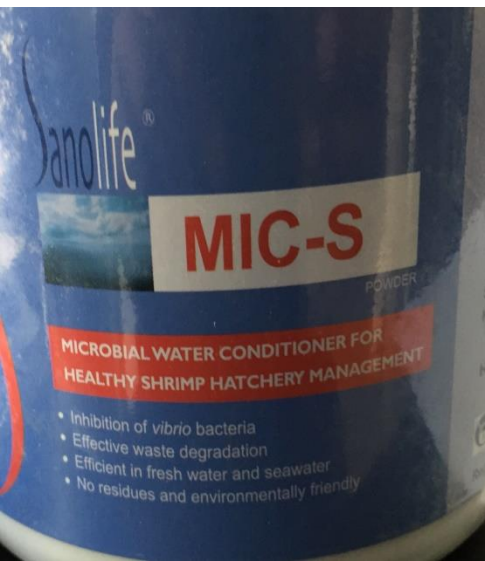
HEALTH MANAGEMENT IN HATCHERY AND NURSERY

- **Total number of hatchery- 57 (CoxsBazar-33, Khulna/Satkhira-24)**
- **Discussion with product suppliers, hatchery owners, DoF officials, hatchery association**
- **Hatchery GPS location collection ongoing**



HATCHERY HEALTH PRODUCTS

- 12 feed and PHPs importer and distributors based in CoxsBazar
- 8-9 distributors imported probiotics
- 35+ branded probiotics are available for hatchery
- Probiotics were mainly for water quality control
- Planning for hatchery health management survey



SOME PHOTOS DURING DATA COLLECTION



Thank You

