

# Pathologic tearfulness after limbic encephalitis

## A novel disorder and its neural basis

Georgios P.D. Argyropoulos, PhD, Lauren Moore, BSc, Clare Loane, PhD, Adriana Roca-Fernandez, MSc, Carmen Lage-Martinez, MD, Oana Gurau, MSc, Sarosh R. Irani, FRCP, PhD, Adam Zeman, FRCP, and Christopher R. Butler, FRCP, PhD

*Neurology*® 2020;94:e1320-e1335. doi:10.1212/WNL.0000000000008934

### Correspondence

Dr. Argyropoulos  
georgios.argyropoulos@  
ndcn.ox.ac.uk

## Abstract

### Objective

We investigated the nature and neural foundations of pathologic tearfulness in a uniquely large cohort of patients who had presented with autoimmune limbic encephalitis (aLE).

### Methods

We recruited 38 patients (26 men, 12 women; median age 63.06 years; interquartile range [IQR] 16.06 years) in the postacute phase of aLE who completed questionnaires probing emotion regulation. All patients underwent structural/functional MRI postacutely, along with 67 age- and sex-matched healthy controls (40 men, 27 women; median age 64.70 years; IQR 19.87 years). We investigated correlations of questionnaire scores with demographic, clinical, neuropsychological, and brain imaging data across patients. We also compared patients diagnosed with pathologic tearfulness and those without, along with healthy controls, on gray matter volume, resting-state functional connectivity, and activity.

### Results

Pathologic tearfulness was reported by 50% of the patients, while no patient reported pathologic laughing. It was not associated with depression, impulsiveness, memory impairment, executive dysfunction in the postacute phase, or amygdalar abnormalities in the acute phase. It correlated with changes in specific emotional brain networks: volume reduction in the right anterior hippocampus, left fusiform gyrus, and cerebellum, abnormal hippocampal resting-state functional connectivity with the posteromedial cortex and right middle frontal gyrus, and abnormal hemodynamic activity in the left fusiform gyrus, right inferior parietal lobule, and ventral pons.

### Conclusions

Pathologic tearfulness is common following aLE, is not a manifestation of other neuropsychiatric features, and reflects abnormalities in networks of emotion regulation beyond the acute hippocampal focus. The condition, which may also be present in other neurologic disorders, provides novel insights into the neural basis of affective control and its dysfunction in disease.

### MORE ONLINE

#### Podcast

Dr. Stacey Clardy talks with Dr. Chris Butler about his paper on pathologic tearfulness after limbic encephalitis.

[NPub.org/965c4u](https://www.npub.org/965c4u)

#### CME Course

[NPub.org/cmelist](https://www.npub.org/cmelist)

From the Memory Research Group (G.P.D.A., L.M., C.L., A.R.-F., C.L.-M., O.G., C.R.B.) and Autoimmune Neurology Group (S.R.I.), Nuffield Department of Clinical Neurosciences, University of Oxford; Department of Psychology (L.M.), University of Bath; Maurice Wohl Clinical Neuroscience Institute, Basic and Clinical Neuroscience Department (C.L.), King's College London, UK; Valdecilla Biomedical Research Institute (C.L.-M.), University Hospital Marqués de Valdecilla, Santander, Spain; Medical School (A.Z.), University of Exeter, UK; Department of Brain Sciences (C.R.B.) Imperial College London, UK; and Departamento de Neurología (C.R.B.), Pontificia Universidad Católica de Chile, Santiago.

Go to [Neurology.org/N](https://www.neurology.org/N) for full disclosures. Funding information and disclosures deemed relevant by the authors, if any, are provided at the end of the article.

The Article Processing Charge was funded by Medical Research Council.

This is an open access article distributed under the terms of the Creative Commons Attribution License 4.0 (CC BY), which permits unrestricted use, distribution, and reproduction in any medium, provided the original work is properly cited.

## Glossary

**aLE** = autoimmune limbic encephalitis; **ANOVA** = analysis of variance; **BA** = Brodmann area; **BIS** = Barratt Impulsiveness Scale; **BOLD** = blood oxygenation level-dependent; **CBS** = Cambridge Behaviour Scale; **CNS-LS** = Center for Neurologic Study–Lability Scale; **DARTEL** = diffeomorphic anatomical registration through the exponentiated lie algebra; **EPI** = echoplanar imaging; **FWE** = family-wise error; **FWHM** = full width at half maximum; **GM** = gray matter; **HADS** = Hospital Anxiety and Depression Scale; **HC** = healthy control; **IQR** = interquartile range; **IRQ** = Irritability Questionnaire; **MAP** = Memory and Amnesia Project; **MNI** = Montreal Neurologic Institute; **MTL** = medial temporal lobe; **MVPA** = multivariate pattern analysis; **OPTIMA** = Oxford Project to Investigate Memory and Ageing; **PCA** = principal component analysis; **rsALFF** = resting-state abnormalities in the local amplitude of low-frequency fluctuations; **rsFC** = resting-state functional connectivity; **rsfMRI** = resting-state fMRI; **TIV** = total intracranial volume; **VBM** = voxel-based morphometry; **WM** = white matter.

Most neurologic research on emotion dysregulation focuses on pseudobulbar affect, which occurs in a broad range of disorders with diffuse or poorly characterized pathology<sup>1–5</sup> often implicating the brainstem and cerebellum.<sup>1,6–8</sup> The fact that pseudobulbar affect has not been associated with focal limbic damage is consistent with its being understood as “a disorder of emotional expression rather than a primary disturbance of feelings.”<sup>7</sup>

Autoimmune limbic encephalitis (aLE) is associated with the subacute onset of amnesia and seizures and high T2-signal (acute MRI) in the limbic system, especially the hippocampus. Patients often respond satisfactorily to immunosuppressive therapy,<sup>9</sup> although many develop hippocampal atrophy and residual cognitive impairment.<sup>10,11</sup> While behavioral/psychiatric symptoms may occur acutely,<sup>12</sup> persisting problems with readily provoked tearfulness are only mentioned in passing,<sup>13–15</sup> and we have encountered complaints of such symptoms among many of our patients.

We aimed to determine the so far unexplored nature and neural correlates of pathologic tearfulness following aLE in a uniquely large cohort of patients ( $n = 38$ ). We investigated its relationships with demographic and clinical data, self-reported measures of emotion regulation, and performance on neuropsychological tests. We hypothesized that it is associated with abnormalities in the hippocampus, the amygdala, hippocampal-diencephalic-cingulate networks, and cerebro-ponto-cerebellar loops: aLE results in relatively focal hippocampal atrophy,<sup>11,16</sup> and the limbic system is involved in emotion processing.<sup>17–19</sup> Amygdala abnormalities are sometimes observed<sup>20</sup> and have been associated with abnormal autonomic arousal.<sup>21</sup> Furthermore, the hippocampus is embedded within broader hippocampal-diencephalic-cingulate networks supporting emotion regulation.<sup>22</sup> We have recently shown abnormalities in this extended circuitry in aLE.<sup>23,24</sup> Finally, in a prominent pathophysiologic account, emotion dysregulation in pseudobulbar affect was caused by disruption to cerebro-ponto-cerebellar pathways,<sup>7</sup> with which the hippocampus communicates.<sup>25</sup>

## Methods

### Standard protocol approvals, registrations, and patient consents

Ethical approval was received from the South Central Oxford Research Ethics Committee (REC no. 08/H0606/133). All participants provided written informed consent according to the Declaration of Helsinki.

### Participants

We report data relating to pathologic tearfulness in 38 patients with aLE (26 male, 12 female; median age at research MRI 63.06 years; interquartile range [IQR] 16.16 years)<sup>24</sup> after the acute stage of the disease (median 5.41; IQR 5.36 years since symptom onset). All patients were fluent in English (37 native speakers; 1 non-native speaker) and had undergone MRI at the time of initial clinical presentation as well as neuropsychological assessment at the Russell Cairns Unit, Oxford, UK (2013–2018).

All patients had been diagnosed with aLE according to established diagnostic criteria<sup>26</sup>: (a) subacute symptom onset suggesting involvement of the limbic system; (b) bilateral abnormalities restricted within the medial temporal lobes (MTLs) on T2-weighted MRI; (c) CSF pleocytosis (white blood cells  $>5/\text{mm}^3$ ) or slow-wave/epileptic activity involving the temporal cortex (EEG); (d) exclusion of alternative causes (e.g., CNS infections/drug toxicity/stroke/Creutzfeldt-Jakob disease/Kleine-Levin syndrome, mitochondrial/neoplastic/epileptic/rheumatologic disorders, septic/metabolic encephalopathy); (e) antibodies against cell-surface/synaptic/onconeural proteins. Criteria (a–d) are required for a diagnosis of definite limbic encephalitis, unless, in the absence of one of (a–c), criterion (e) is satisfied.<sup>26</sup>

A total of 34 of 38 patients satisfied the criteria for a diagnosis of definite aLE; the remaining 4/38 had been diagnosed with aLE, meeting criteria (a, b, d), but not (e). No data could be recovered regarding (c). In 28/38 patients, an aLE-associated autoantibody was identified. A total of 10/38 patients demonstrated the clinical profile of aLE with no identified antibody; such cases are well-recognized<sup>27</sup> and are generally

thought to involve antibodies not detected in clinical practice at the time of screening. No patient presented with positive PCR testing for herpes simplex virus or with anti-NMDAR encephalitis.<sup>28</sup> Two of 38 patients had neoplastic lesions, thought to be the triggers for their autoimmune disorder, which were treated and were in full remission at the time of study participation. A total of 31/38 patients had been treated acutely with immunotherapy (e.g., plasma exchange, IV or oral prednisolone). A total of 34/38 patients had shown abnormal hippocampal signal, volume, or diffusion on clinical MRI conducted acutely. Six of 38 patients showed amygdala abnormalities, 1 in the parahippocampal cortex, 1 in the entorhinal cortex, 4 patients had mild microangiopathic changes in keeping with their age, and 1 patient showed extra-MTL abnormalities (bright caudate). No acute abnormalities were detected in 4/38 patients, who nonetheless demonstrated clinical features characteristic of aLE; 35/38 patients had presented acutely with seizures.

Moreover, patients had no history of previous neurologic or psychiatric disorder that could have resulted in cognitive impairment. They were assessed by a single neurologist (CRB) prior to study inclusion. Their (acute) clinical and (postacute) neuropsychological details have been presented previously.<sup>24</sup> Healthy controls (HCs) were recruited through the Oxford Project to Investigate Memory and Ageing (OPTIMA) and through local advertisement.

## Neuropsychological profile

Postacutely, all patients and 57 HCs (38 men, 19 women; age at assessment: median, 61.50; IQR 17.26 years; HCs vs patients: male:female ratio:  $\chi^2 = 0.032$ ,  $p = 0.858$ ; age at assessment:  $U = 933.50$ ,  $p = 0.258$ ) underwent neuropsychological assessment. Patients showed preserved executive function, above-average premorbid intelligence, and spared motor, executive, and visuospatial function, but impaired episodic memory.<sup>24</sup>

## Review of medical records

Details were extracted from medical records and interviews with the patients and caregivers using a standard proforma regarding clinical history, acute aLE presentation, and subsequent clinical course of each patient (age at symptom onset; presenting symptoms; premorbid and acute phase depression, anxiety, agitation, obsessionality, or hallucinations; seizure occurrence/recency; delay between symptom onset and start of treatment; autoantibody type; past/present immunotherapy, antiepileptics, and antidepressants).

## Emotion regulation assessment

### Questionnaires

In order to assess patients' pathologic tearfulness, we administered the Center for Neurologic Study–Lability Scale (CNS-LS),<sup>29</sup> a 7-item questionnaire comprising 2 subscales ("labile crying" and "labile laughter"). A series of additional questionnaires were administered to examine the relationship

of patients' pathologic tearfulness with (1) anxiety and depression (Hospital Anxiety and Depression Scale [HADS]),<sup>30</sup> (2) impulsivity (Barratt Impulsiveness Scale [BIS]),<sup>31</sup> (3) irritability (Irritability Questionnaire [IRQ]),<sup>32</sup> and (4) empathy (Cambridge Behaviour Scale [CBS])<sup>33</sup>; docs.autismresearchcentre.com/tests/EQ40\_ScoringKey.doc). A total of 25/38 patients and 29/57 HCs completed and returned those self-administered questionnaires by post. Patients filled out the questionnaires together with their next of kin or family members. Patients who completed the emotion regulation questionnaires did not differ from those who did not in the following: (1) neuropsychological tests in which patients showed preserved group-level performance<sup>24</sup> (all  $ps$ ,  $p_{\text{corr}} \geq 0.340$ ); (2) tests in which patients showed group-level impairment<sup>24</sup> (all  $ps$ ,  $p_{\text{corr}} \geq 0.304$ ); (3) clinical/demographic variables (see previous section; all  $ps$ ,  $p_{\text{corr}} \geq 0.999$ ); (4) volumes of manually delineated MTL structures and automatically delineated subcortical structures in which there was no group-level atrophy<sup>24</sup> (all  $ps$ ,  $p_{\text{corr}} \geq 0.209$ ); and (5) structural/functional brain abnormalities identified at group level<sup>24</sup> (all  $ps$ ,  $p_{\text{corr}} \geq 0.260$ ).

We also assessed the relationship of patients' emotion regulation with their memory by conducting bivariate correlation analyses between memory test scores and scores on questionnaires of emotion regulation in which patients showed impairment compared with HCs.

### Self-report (clinical interview)

In a complementary approach, and since the CNS-LS may not be sensitive to the symptoms described by our patients, we dichotomized the cohort according to clinical complaint at interview. The interviewer was blind to patients' responses in the above questionnaires. Patients and their family members were asked whether there had been instances of "labile laughter" or labile crying, and to provide examples from their daily life.

## Relationship with demographic, clinical, and neuropsychological profiles

We conducted (1) bivariate correlations of CNS-LS scores with continuous variables and independent-samples comparisons on CNS-LS scores for binary variables across patients; and (2) comparisons among HCs, patients with, and patients without pathologic tearfulness (independent-samples comparisons for continuous variables,  $\chi^2$  tests for binary variables).

## Brain imaging

### Structural MRI

We acquired 3D T1-weighted images using a magnetization-prepared rapid gradient echo sequence (echo time 4.7 ms, repetition time 2,040 ms, 8° flip angle, field of view 192 mm, voxel size 1 × 1 × 1 mm). All 38 patients (26 male, 12 female; age at imaging: median 63.06; IQR 16.06 years) underwent structural brain imaging, along with 67 HCs (35 recruited by

the Memory and Amnesia Project [MAP]; 32 datasets were made available through OPTIMA; 40 male, 27 female; age at imaging: median 64.70; IQR 19.87 years; HCs vs patients: M: F ratio:  $\chi^2 = 0.79$ ,  $p = 0.374$ ; age at imaging:  $U = 1,239.5$ ;  $p = 0.825$ ) (methods also in reference 24).

### Volumetry

MTL structures (left/right hippocampus, amygdala, temporal, entorhinal, perirhinal, and parahippocampal cortices) were manually delineated in native space (protocol: [ndcn.ox.ac.uk/files/research/segmentation\\_protocol\\_medial\\_temporal\\_lobes.pdf](https://ndcn.ox.ac.uk/files/research/segmentation_protocol_medial_temporal_lobes.pdf)).<sup>23,24</sup> Subcortical structures (brainstem, left/right thalamus, caudate nucleus, putamen, pallidum, nucleus accumbens) were automatically delineated using FSL-FIRST (v.6.0; <https://fsl.fmrib.ox.ac.uk/fsl/fslwiki>).<sup>34</sup>

### Whole-brain voxel-based morphometry (VBM)

In order to identify gray matter (GM) volume reduction in our patient group at a whole-brain level, the T1-weighted MRIs were analyzed with VBM, conducted using Statistical Parametric Mapping software (SPM12; [fil.ion.ucl.ac.uk/spm/software/spm12](http://fil.ion.ucl.ac.uk/spm/software/spm12)) in MATLAB R2017b. Images were examined for scanner artefacts and reoriented to have the same point of origin (anterior commissure) and spatial orientation. They were then bias-corrected to remove intensity nonuniformities, and segmented into GM, white matter (WM), and CSF with the unified segmentation procedure. The diffeomorphic anatomical registration through the exponentiated lie algebra (DARTEL) toolbox was applied to participants' GM, WM, and CSF to refine intersubject registration, and study-specific GM templates were generated.<sup>35</sup> After affine registration of the GM DARTEL templates to the tissue probability maps in Montreal Neurologic Institute (MNI) space, nonlinear warping of GM images was performed to this template in MNI space. Voxel values in the tissue maps were modulated by the Jacobian determinant (calculated during spatial normalization), with modulated GM images reflecting tissue volume. These images (voxel size: 1 mm<sup>3</sup> isotropic) were smoothed using a Gaussian filter of 8 mm full width at half maximum (FWHM). We compared GM volume between groups (HCs > patients; between-subject covariates: age, sex, total intracranial volume [TIV], study [MAP, OPTIMA]). We report clusters surviving family-wise error (FWE) correction ( $p < 0.05$ ) at peak voxel level over  $p < 0.001$  (uncorrected), as well as clusters surviving correction for nonstationary smoothness<sup>36</sup> and FWE correction for cluster size ( $p < 0.05$ ).

Volumes (calculated from manual/automated segmentation, or the volume reflected by each VBM cluster) that showed reduction in patients at whole-group level were residualized against age, sex, TIV, and study and entered in bivariate correlation analyses with scores in questionnaires of emotion regulation. We also contrasted patients with pathologic tearfulness with those without and HCs across all volumes delineated as well as across the whole brain (VBM).

### Resting-state fMRI (rsfMRI)

Whole-brain blood oxygenation level-dependent (BOLD)-weighted fMRI data were acquired (gradient echo echoplanar imaging (EPI) sequence; 180 volumes; slice thickness 3.5 mm, echo time 28 ms, repetition time 2,410 ms, 89° flip angle, field of view 192 mm, voxel size 3 × 3 × 3.5 mm). Participants were instructed to lie still, not to fall asleep, to keep their eyes open, and to watch a fixation cross presented on the in-scanner projector. A total of 35 of 38 patients (3 datasets discarded due to acquisition errors or movement; 24 men, 11 women; median age at imaging, 61.45; IQR 15.85 years) underwent rsfMRI, along with 32 HCs (3 datasets discarded due to movement or acquisition errors; only structural MRIs were available for the HCs that were made available through OPTIMA; 23 men, 9 women; median age 55.71; IQR 17.18 years; HCs vs patients: male:female ratio:  $\chi^2 = 0.087$ ;  $p = 0.768$ ; age at imaging:  $U = 425.00$ ;  $p = 0.091$ ).

### Preprocessing

EPIs were spatially realigned and slice time-corrected. Structural MRIs were coregistered to the EPIs, segmented and normalized along with EPIs in MNI space, followed by motion outlier detection (artifact detection tools-based scrubbing). Denoising, including the anatomical component-based correction method (CompCor), was employed to remove sources of noise in the BOLD time series data, deriving principal components from WM and CSF. WM, CSF, and the 6 movement measures were included as first-level nuisance covariates. A temporal bandpass filter (0.01–0.1 Hz) was applied to this residual BOLD signal, in order to remove motion artefacts and physiologic and other artefactual effects. Images were smoothed using a Gaussian filter (8 mm FWHM).

### Resting-state amplitude of low frequency fluctuations and functional connectivity

We further examined whether resting-state abnormalities in the local amplitude of low-frequency fluctuations (rsALFF) and hippocampal functional connectivity (rsFC) were associated with pathologic tearfulness. Preprocessing, rsALFF, and rsFC analyses were conducted using the CONN toolbox v. 18.a ([nitrc.org/projects/conn](http://nitrc.org/projects/conn)).<sup>37</sup>

### rsFC: connectome-multivariate pattern analysis (MVPA)

In order to identify seed regions for post hoc seed-to-voxel connectivity analyses in a data-driven fashion, we used MVPA as implemented in the connectome-MVPA CONN toolbox. MVPA assesses the multivariate pattern of pairwise connections between voxels across the entire brain by means of a principal component analysis (PCA) separately for each voxel that characterizes its rsFC with the rest of the brain. In the first PCA step, separately for each participant, a default number of 64 PCA components were retained while characterizing each participant's voxel-to-voxel correlation structure. The resulting component scores were stored as first-level voxel-to-voxel covariance matrices for each participant. In the



second PCA step, separately for each voxel and jointly across participants, the 7 strongest components were retained from a PCA decomposition of the between-subjects variability in seed-to-voxel connectivity maps between this voxel and the rest of the brain, according to a conventionally employed ratio of 1:10 between the number of components extracted and the number of participants ( $n = 67$ ). Second-level analyses were then conducted in order to test for group differences in whole-brain connectivity ( $F$  test across all MVPA components), comparing for each voxel the component scores between the 2 groups (HCs < > patients; between-subjects covariates: age, sex). The results for each voxel reflected between-group differences in rsFC between this voxel and the rest of the brain.

### rsFC: seed-to-voxel connectivity analysis

We followed up the MVPA with post hoc analyses to determine specific connectivity patterns. We thus conducted a whole-brain seed-to-voxel analysis, seeding from the regions identified from the MVPA contrast (HCs < > patients), in order to assess connectivity between those regions and the rest of the brain.

### Resting-state hemodynamic activity: rsALFF

Along with rsFC, we also examined local abnormalities in the intensity of slow spontaneous fluctuations of hemodynamic activity at rest across the whole brain, using an analysis of rsALFF, that is, the total power within the frequency range between 0.01 and 0.1 Hz, indexing the strength of low-frequency oscillations.

All the rsfMRI analyses involved age and sex as between-subjects covariates. Statistical parametrical connectivity maps were thresholded at a voxel level of  $p < 0.001$  and FWE-corrected ( $p < 0.05$ ) at cluster or peak level.

The mean values in clusters of reduced rsALFF or rsFC in patients at whole-group level, as compared with HCs, were residualized against age and sex across participants and then entered in bivariate correlations with scores in questionnaires of emotion regulation. We also contrasted patients with pathologic tearfulness against the rest of the patients and HCs across the whole brain.

### Statistical analysis

Statistical (nonimaging) analyses were conducted using SPSS (v. 25.0, SPSS Inc., Chicago, IL). Significance values were corrected for multiple testing with the Holm-Bonferroni sequential correction method ( $p_{\text{corr}}$ ). We used the Levene test to assess variance homogeneity and the Shapiro-Wilk test to assess normal distribution. When normal distribution was violated (and log-transformation did not suffice), non-parametric tests were employed. Parametric (Student or Welch  $t$  tests) and nonparametric tests (Mann-Whitney  $U$ ) were used appropriately for independent-samples comparisons. For comparisons among 3 groups, univariate analyses of variance (ANOVAs) or Kruskal-Wallis  $H$  tests were used appropriately, and post hoc comparisons between groups

were Bonferroni-corrected. Pearson  $r$  and Spearman  $\rho$  were used appropriately to examine correlations between questionnaire scores and other measures of interest. We used multiple stepwise linear regression analysis (default  $\alpha$  level of 0.05 for entry to model and 0.1 for removal) to assess the proportion of the variance of patients' scores (questionnaires on emotion regulation) that could be explained by brain abnormalities.

### Data availability

The deidentified data will be available and shared by request for purposes of replicating procedures and results.

## Results

### Emotion regulation assessment

#### Questionnaires: patients vs HCs

Patients scored higher than HCs for labile crying (CNS-LS) ( $t = -2.79$ ,  $p_{\text{corr}} = 0.049$ ) but not for laughter ( $t = 0.44$ ,  $p_{\text{corr}} > 0.999$ ; 2-way mixed-effects ANOVA: group:  $F = 2.49$ ,  $p = 0.12$ ; emotion:  $F = 1.81$ ,  $p = 0.19$ ; group  $\times$  emotion:  $F = 5.73$ ,  $p = 0.02$ ). They did not differ from HCs in their empathy quotient (CBS) ( $t = 0.79$ ,  $p_{\text{corr}} > 0.999$ ), in irritability (IRQ) (frequency:  $U = 235$ ,  $p_{\text{corr}} = 0.450$ ; intensity:  $U = 240.5$ ,  $p_{\text{corr}} = 0.450$ ), or anxiety (HADS:  $U = 517$ ,  $p_{\text{corr}} = 0.090$ ). They scored higher in the planning ( $t = -4.97$ ,  $p_{\text{corr}} < 0.0005$ ) and attention facets ( $t = -3.90$ ,  $p_{\text{corr}} = 0.002$ ), but not in the motor facet for impulsiveness (BIS) ( $t = 0.38$ ,  $p_{\text{corr}} > 0.999$ ). They also scored higher for depression (HADS) ( $U = 357.5$ ,  $p_{\text{corr}} < 0.0005$ ), although no patient scored within the severe range (also noted in reference 24).

Scores for labile crying did not correlate across patients with impulsiveness (attention and planning facets:  $\rho = 0.12$ ,  $p = 0.60$ ), depression ( $\rho = 0.24$ ,  $p = 0.28$ ), or any memory score in which patients had shown impaired performance as compared with HCs (all  $ps$ ,  $p_{\text{corr}} \geq 0.240$ ), and were not associated with any demographic or clinical variables examined (all  $ps$ ,  $p_{\text{corr}} \geq 0.440$ ).

#### Self-report: patients with vs patients without pathologic tearfulness and HCs

In a research-oriented clinical interview, 19 of 38 patients were identified as presenting with pathologic tearfulness. In particular, they reported being moved to tears easily by relatively minor stimuli in a manner at odds with their premorbid state (table 1). The other 19 reported never having experienced such instances. No patient reported experiencing episodes of labile laughter.

The majority of patients and their family members reported specific triggers of such reactions, including sad stories on the news and witnessing other people crying (table 2).

Patients with pathologic tearfulness did not differ from the rest of the participants in any demographic or clinical details

**Table 1** Patients' self-reports

Pathologic tearfulness
“Since diagnosis I feel far more emotional within myself.”
“I’ve turned into a bit of a wimp. Overwhelmed by emotion.”
Triggers of pathologic tearfulness
“The news or other information [or] stories with which I have no personal connection.”
“Articles on the radio [or] TV, newspapers, situations that I don’t have control over.”
“Children being successful [...], overcoming [...] handicap.”
“When my cat brings me a ‘present’ e.g., a mouse, [a] bird.”
Examples of the self-reports of pathologic tearfulness and triggers of pathologic tearfulness that patients with autoimmune limbic encephalitis provided to a neurologist (C.R.B.) during their research-oriented clinical interview postacutely. Each line represents a different patient’s perspective.

or in episodic memory impairment, depression, or impulsiveness. Moreover, they did not differ from the rest of the patients or HCs in premorbid intelligence, vocabulary, semantic knowledge, visuomotor function or executive

function, anxiety, empathy, or irritability. Among all the tests and questionnaires administered, the only one in which they scored differently from both the rest of the patients and HCs was CNS-LS (table 3).

**Table 2** Triggers of pathologic tearfulness as identified by patients and their family members

Patient code (see reference 24 for further details)	Sad stories on television/ newspaper/radio (e.g., children suffering)	Music	Animals (suffering or acting affectionately)	Other people crying	Events involving family members (e.g., death, departure, progress, overcoming hardship)	Unfamiliar environment	Photographs of marriage	No mention of trigger
1								+
2					+			
5								+
9	+		+					
10	+							
11	+							
12	+							
13	+							
14	+	+						
15	+			+				
17						+	+	
25	+							
26			+		+			
27			+					
29								+
30								+
33					+			
34								+
38	+	+						

**Table 3** Neuropsychological, clinical, and demographic profile of patients with vs patients without pathologic tearfulness vs healthy controls (HCs)

Domain	Test	Subtest (max score/z)	HCs		Tearful–		Tearful+		Comparison among groups			Post hoc comparisons			
			M	IQR	M	IQR	M	IQR	Value	<i>p</i> <sub>corr</sub> <sup>a</sup>	HCs vs tearful–	Tearful+ vs HCs	Tearful+ vs tearful–		
Neuropsychological profile (tearful vs nontearful patients vs HCs)															
Mood, personality, and emotion	CNS-LS	“Labile crying” (15)	4.0	2.0	4.0	4.0	7.0	4.0	F	9.19	0.016	>0.999	<0.0005	0.011	
		“Labile laughter” (20)	6.0	5.0	5.5	5.0	5.0	4.0	F	0.15	>0.999				
	BIS	Planning (44)	20.0	6.0	26.0	7.3	26.0	7.0	F	12.76	0.002	<0.0005	0.003	>0.999	
		Attention (32)	13.0	3.5	17.5	8.3	15.0	1.9	F	8.40	0.020	0.001	0.049	0.711	
		Motor (44)	21.0	4.5	21.5	8.1	19.5	4.5	F	1.09	>0.999				
	HADS	Depression (21)	1.0	2.3	3.0	8.0	2.0	4.0	H	16.69	0.019	0.015	0.001	>0.999	
		Anxiety (21)	4.0	4.0	4.5	7.0	7.0	2.0	H	7.80	0.340				
	IRQ	Frequency (63)	13.5	9.0	15.0	18.5	17.0	8.8	H	3.40	>0.999				
		Intensity (63)	17.5	11.3	17.0	20.8	21.0	12.0	H	2.60	>0.999				
		CBS EQ (80)		45.0	11.5	43.5	14.4	42.4	25.3	F	0.33	>0.999			
Intelligence, semantic memory, and language	GNT (z)		0.8	1.1	0.4	2.4	−0.1	1.0	H	10.74	0.110				
	WASI/WASI-II	Vocabulary (z)	1.4	1.3	0.4	1.6	0.9	1.5	F	6.43	0.072				
	NART	p-FSIQ (z)	1.5	0.8	0.9	1.2	1.1	0.8	H	8.41	0.285				
	WASI/WASI-II	Similarities (z)	1.1	0.8	0.7	1.1	0.9	0.7	H	7.13	0.392				
	C&CT (z)		0.3	1.2	0.0	1.7	0.0	1.0	H	5.57	0.806				
	AMI Personal Semantics	Remote: childhood (21)	19.5	3.0	18.0	4.1	16.5	5.0	H	7.43	0.360				
		Remote: early adulthood (21)	20.5	2.0	20.5	3.3	19.0	2.0	H	10.48	0.110				
	Episodic memory														
	Autobiographical	AMI Autobiographical	Remote: childhood (9)	9.0	3.0	5.0	4.8	4.0	4.0	H 17.34	0.019	0.001	0.002	>0.999	
			Remote: early adulthood (9)	9.0	1.5	5.5	6.0	4.0	4.0	H 24.81	0.019	0.001	0.0005	>0.999	

Continued

**Table 3** Neuropsychological, clinical, and demographic profile of patients with vs patients without pathologic tearfulness vs healthy controls (HCs) (*continued*)

Domain	Test	Subtest (max score/z)	HCs		Tearful–		Tearful+		Comparison among groups		Post hoc comparisons			
			M	IQR	M	IQR	M	IQR	Value	$p_{corr}^a$	HCs vs tearful–	Tearful+ vs HCs	Tearful+ vs tearful–	
Neuropsychological profile (tearful vs nontearful patients vs HCs)														
Verbal recall	WMS-III	Logical Memory I (z)	0.3	1.9	−1.3	1.1	−1.0	1.7	F	24.34	<0.0005	<0.0005	<0.0005	0.464
		Logical Memory II (z)	0.7	1.7	−2.5	1.3	−0.7	2.0	H	43.48	0.019	<0.0005	<0.0005	0.674
		Word List I (z)	0.7	1.8	−1.2	1.3	−0.7	1.3	H	36.44	0.019	<0.0005	0.001	0.201
		Word List II (z)	1.3	1.0	−1.0	1.5	−0.7	2.3	H	32.68	0.019	<0.0005	<0.0005	>0.999
Verbal recognition	D&P	People (z)	−0.3	1.6	−1.3	1.0	−1.3	1.2	H	20.40	0.019	<0.0005	0.002	>0.999
	WMS-III	Word List II Recognition (z)	0.7	1.0	−1.7	2.4	0.3	1.7	H	31.09	0.019	<0.0005	0.14	0.007
	RMT	Words (z)	1.0	1.5	−0.3	2.2	0.3	2.0	H	19.13	0.019	<0.0005	0.004	>0.999
	D&P	Names (z)	0.3	2.0	−0.8	2.3	−1.2	1.6	F	13.88	<0.0005	0.002	<0.0005	0.872
Visual recall	ROCFT	Immediate Recall (z)	1.3	1.9	−1.4	2.9	0.0	2.6	H	26.36	0.019	<0.0005	0.013	0.29
		Delayed Recall (z)	1.3	2.0	−2.2	2.8	−0.4	3.5	H	24.76	0.019	<0.0005	0.013	0.385
Visual recognition	D&P	Shapes (z)	0.7	1.0	−1.0	2.5	−0.7	2.2	F	18.31	<0.0005	<0.0005	<0.0005	>0.999
	D&P	Doors (z)	0.7	1.3	−1.0	1.3	−0.2	1.5	H	14.77	0.025	0.001	0.166	0.443
	RMT	Scenes (z)	1.0	1.0	−0.1	2.4	−0.6	3.0	F	12.50	0.001	0.0004	0.0005	>0.999
		Faces (z)	0.0	2.3	−0.5	1.7	−0.3	2.4	F	0.80	>0.999			
Verbal forgetting	D&P	Verbal Forgetting (z)	0.7	1.0	−0.3	2.0	−0.5	2.5	H	8.94	0.220			
Visual forgetting		Visual Forgetting (z)	0.3	0.0	0.3	2.3	0.3	1.7	H	11.42	0.072			
Executive function	DKEFS Trails	Number–Letter Switching (z)	0.7	0.7	0.3	1.8	0.3	0.7	H	7.59	0.352			
Visuomotor function	WMS-III	Digit Span (z)	1.0	1.2	0.0	1.7	0.3	1.4	F	4.42	0.285			
	ROCFT	Copy (%iles)	>16th %ile	—	>16th %ile	—	>16th %ile	—	H	3.60	>0.999			
	DKEFS Trails	Visual Scanning (z)	0.7	1.5	0.3	1.3	0.0	1.3	H	2.48	>0.999			
		Motor Speed (z)	0.7	1.0	0.3	1.3	0.3	2.7	H	5.22	0.876			

Continued



**Table 3** Neuropsychological, clinical, and demographic profile of patients with vs patients without pathologic tearfulness vs healthy controls (HCs) (continued)

			HCs		Tearful–		Tearful+		Comparison among groups		Post hoc comparisons		
Domain	Test	Subtest (max score/z)	M	IQR	M	IQR	M	IQR	Value	$p_{\text{corr}}^{\text{a}}$	HCs vs tearful–	Tearful+ vs HCs	Tearful+ vs tearful–
Neuropsychological profile (tearful vs nontearful patients vs HCs)													
	VOSP	Cube Analysis (10)	10.0	1.0	9.0	2.0	9.5	1.3	H	4.88	0.957		
		Position Discrimination (20)	20.0	0.3	20.0	1.0	20.0	0.0	H	2.21	>0.999		
		Dot Counting (10)	10.0	0.0	10.0	0.0	10.0	0.0	H	1.63	>0.999		
			Tearful–				Tearful+				Tearful+ vs –		
Measure			M	IQR			M	IQR			Value		$p_{\text{corr}}^{\text{a}}$
Demographic and clinical profile (tearful vs nontearful patients)													
Age at structural MRI, y			65.3		14.9		57.4		18.1		$U$	163.00	>0.99
Symptom onset to treatment onset delay, wk			12.0		31.0		8.0		15.0		$U$	144.00	>0.99
Age at symptom onset, y			58.6		11.1		52.7		20.0		$t$	0.774	>0.99
Symptom onset to research scan delay, y			4.0		4.0		5.7		7.5		$t$	−1.09	>0.99
Age at neuropsychological assessment, y			64.0		13.0		60.0		18.1		$t$	0.20	>0.99
Sex, M:F			13:6				13:6				$\chi^2$	0.00	>0.99
Premorbid depression			1+:18–				2+:17–				$\chi^2$	0.36	>0.99
Seizures													
Recency (last seizure > vs <1 year since research scan date)			10>:6<				8>:11<				$\chi^2$	1.45	>0.99
Acute clinical T2 MRI abnormalities													
HPC (+ vs −)			16+:3–				18+:1–				$\chi^2$	1.12	>0.99
AMG (+ vs −)			5+:14–				1+:18–				$\chi^2$	3.17	>0.99
Acute symptoms													
Depression (+ vs −)			6+:13–				6+:13–				$\chi^2$	0.00	>0.99
Anxiety (+ vs −)			7+:12–				9+:10–				$\chi^2$	0.43	>0.99
Agitation (+ vs −)			7+:12–				11+:8–				$\chi^2$	1.69	>0.99

Continued

**Table 3** Neuropsychological, clinical, and demographic profile of patients with vs patients without pathologic tearfulness vs healthy controls (HCs) (continued)

Measure	Tearful–		Tearful+		Tearful+ vs –	
	M	IQR	M	IQR	Value	$p_{corr}^a$
Hallucinations	2+:17–		7+:12–		$\chi^2$ 3.64	>0.99
Obsessionality	4+:15–		3+:16–		$\chi^2$ 0.18	>0.99
<b>Autoantibodies</b>						
Seropositive (+ vs –)	13+:6–		15+:4–		$\chi^2$ 0.54	>0.99
LG1 (+ vs –)	8+:11–		10+:9–		$\chi^2$ 0.42	>0.99
<b>Immunotherapy</b>						
Oral (+ vs –)	12+:7–		17+:2–		$\chi^2$ 3.64	>0.99
PLEX (+ vs –)	6+:13–		5+:14–		$\chi^2$ 0.13	>0.99
IVIg (+ vs –)	12+:7–		13+:6–		$\chi^2$ 0.12	>0.99
<b>Medication</b>						
BZD (+ vs –)	2+:17–		2+:17–		$\chi^2$ 0.00	>0.99
SSRI (+ vs –)	6+:13–		6+:13–		$\chi^2$ 0.00	>0.99
AED (+ vs –)	14+:5–		17+:2–		$\chi^2$ 1.58	>0.99

Abbreviations: AED = antiepileptic drugs; AMG = amygdala; AMI = Autobiographical Memory Interview (scores for participants aged 50 or older were only analyzed, as those pertained to remote memories up to participants' mid 30s; AMI scores are not age-scaled); BIS = Barratt Impulsiveness Scale; BZD = benzodiazepines; C&CT = Camel and Cactus Test; CBS = Cambridge Behavior Scale; CNS-LS = Center for Neurologic Study–Lablity Scale (scores were log-transformed); D&P = Doors and People Test; DKEFS = Delis-Kaplan Executive Function System; EQ = empathy quotient; F = univariate analysis of variance; GNT = Graded Naming Test; H = Kruskal-Wallis H; HADS = Hospital Anxiety and Depression Scale; HC = healthy controls; HPC = hippocampus; IQR = interquartile range; IRQ = Irritability Questionnaire; IVIg = IV immunoglobulin; LGI1 = anti-leucine-rich glioma-inactivated 1 (the most prominent autoantibody identified in our cohort); M = median; NART = National Adult Reading Test; pFSIQ = premorbid Full-Scale Intelligence Quotient; PLEX = plasma exchange; RMT = Warrington Recognition Memory Tests (words, faces) and Warrington Topographical Memory test (scenes); ROCFT = Rey-Osterrieth Complex Figure Test; SSRI = selective serotonin reuptake inhibitor; VOSP = Visual Object and Space Perception Battery; WASI = Wechsler Abbreviated Scales of Intelligence; WMS-III = Wechsler Memory Scale III.

Post hoc comparisons per univariate analysis of variance/Kruskal-Wallis H tests are Bonferroni-corrected.

<sup>a</sup>  $p_{corr}$  =  $p$  values corrected using the Holm-Bonferroni sequential correction for multiple comparisons, separately for neuropsychologic and demographic/clinical variables.

## Structure/function–Behavior relationships

### Questionnaires: correlations with CNS-LS and BIS scores

In our previous study,<sup>24</sup> we identified a series of brain abnormalities ( $n = 13$ ) that patients showed at group level: volume reduction in the left and right hippocampus, captured by both VBM and manual delineation; volume reduction in the anterior-mediodorsal thalamus and right dorsolateral thalamus (VBM) and the left thalamus (automated delineation), as well as the right entorhinal cortex (manual delineation); reduced right hippocampal rsFC with left hippocampus, ventral-posterior posteromedial cortex (posterior cingulate, retrosplenial cortex, and precuneus; Brodmann area [BA] 23, 31), and medial prefrontal cortex (BA 10, 32, 24); and reduced rsALFF in the posterior cingulate and the precuneus (BA 23, 31). We entered the mean values of the clusters that reflected these abnormalities (residualized against age and sex for functional abnormalities, as well as TIV and study [MAP, OPTIMA] for volumes) in bivariate correlations with CNS-LS scores for labile crying. Patients' scores correlated strongly with their reduced right hippocampal rsFC with the ventral-posterior posteromedial cortex ( $r = -0.61$ ,  $p_{\text{corr}} = 0.030$ ; rest of  $ps$ ,  $p_{\text{corr}} \geq 0.190$ ; figure 1A). No such correlations were identified with impulsivity (BIS attention and planning facets) or depression (HADS) scores, even at uncorrected levels ( $|r| < 0.29$ ,  $p > 0.18$ ).

Moreover, given our a priori hypotheses on the role of the hippocampus in emotion dysregulation, we examined, at uncorrected levels, correlations with CNS-LS scores. Right anterior hippocampal volume correlated negatively across patients with scores for labile crying ( $r = -0.52$ ,  $p = 0.01$ ; left anterior, right/left posterior hippocampus:  $p > 0.07$ ; figure

1B), but not with right hippocampal rsFC with the posteromedial cortex ( $r = 0.33$ ,  $p = 0.05$ ). When these 2 factors were entered as independent variables in a multiple stepwise linear regression, the analysis was terminated in 2 steps, with the right hippocampal–posteromedial cortical rsFC included in the first model as a predictor of patients' scores of labile crying ( $F = 12.50$ ,  $p = 0.002$ ;  $R^2 = 0.37$ ), and with the volume of the right anterior hippocampus entered in the model in the second step ( $F = 9.55$ ,  $p = 0.001$ ;  $R^2 = 0.49$ ). No volumetric correlation of any hippocampal segment was identified with impulsivity or depression scores ( $|r| < 0.25$ ,  $p > 0.19$ ).

### Self-report: patients with vs without pathologic tearfulness and HCs

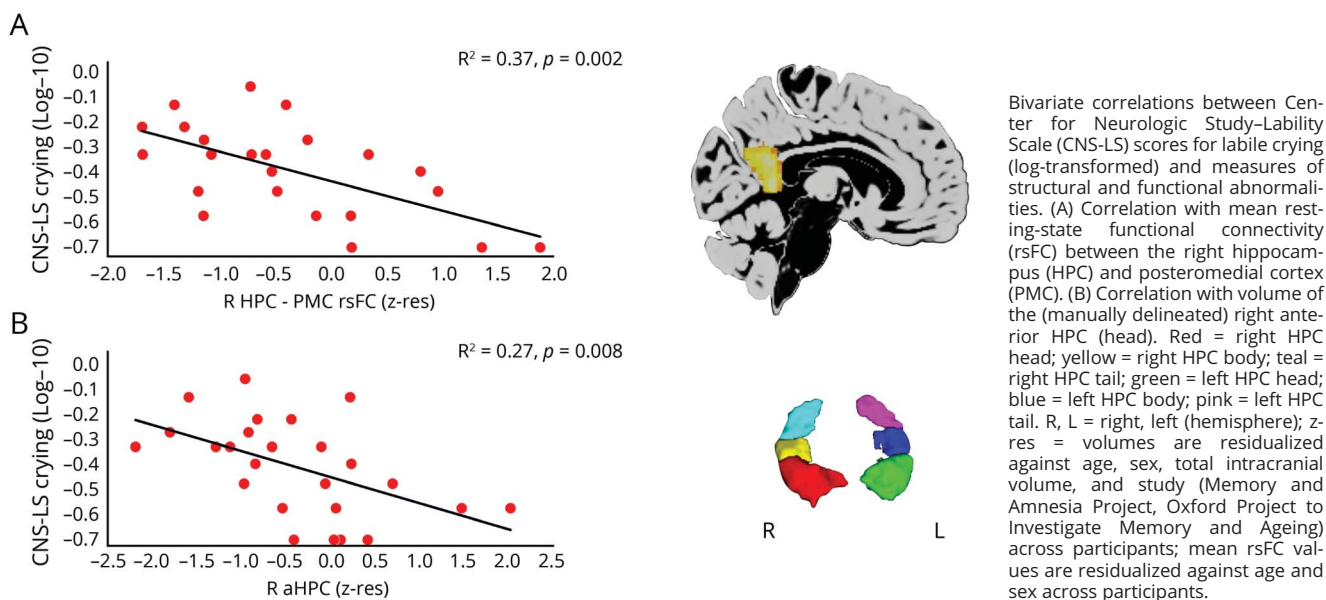
#### Structural abnormalities

Patients with pathologic tearfulness did not differ from the rest of the patients in any MTL or subcortical volumes ( $p_{\text{corr}} \geq 0.350$ ). Nevertheless, a whole-brain VBM analysis disclosed lower volume for these patients relative to the other 2 groups in the right anterior hippocampus, the right cerebellar hemispheric HVI/HVIIa Crus I, and the left fusiform gyrus (BA 37; figure 2).

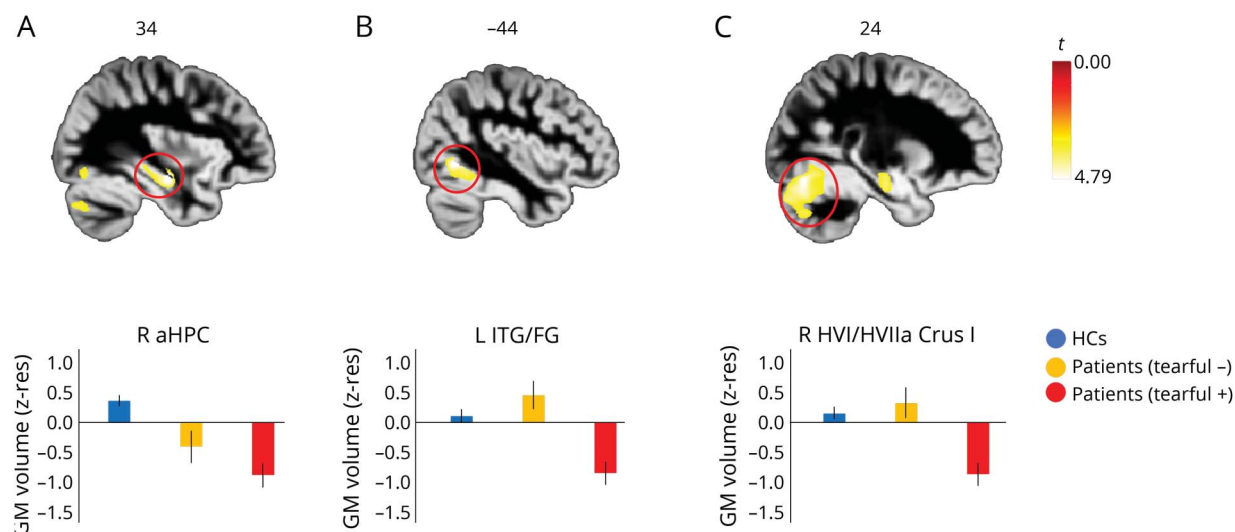
#### Functional abnormalities

A connectome–MVPA analysis on rsFC across the whole brain identified a cluster in the right hippocampus as a region in which patients with pathologic tearfulness differed from the other 2 groups. We thus seeded from the right hippocampus in native space (unsmoothed timeseries), in order to identify regions with which these patients showed abnormal right hippocampal rsFC: they showed aberrantly increased right hippocampal rsFC with the right middle frontal gyrus (BA 9)

**Figure 1** “Labile crying” scores in patients with autoimmune limbic encephalitis: structure/function–behavior relationships



**Figure 2** Structural abnormalities in patients with pathologic tearfulness



Results of whole-brain voxel-based morphometry (VBM) on modulated gray matter (GM) (reflecting GM volume). Contrast: healthy controls (HCs) and patients without pathologic tearfulness > patients with pathologic tearfulness; between-subjects nuisance regressors: age, sex, total intracranial volume (TIV), and study (Memory and Amnesia Project [MAP], Oxford Project To Investigate Memory and Ageing [OPTIMA]). (A) Right anterior hippocampus:  $kE = 19$ ,  $p$  family-wise error-corrected (FWE) = 0.037; peak voxel:  $t = 4.79$ ;  $x = 34$ ,  $y = -12$ ,  $z = -17$ . (B) Left fusiform gyrus/posterior portion of inferior temporal gyrus:  $kE = 17$ ;  $p$  FWE = 0.038; peak voxel:  $t = 4.79$ ;  $x = -44$ ,  $y = -62$ ,  $z = -5$ . (C) Right cerebellar hemispheric lobules VI/VIIa Crus I:  $kE = 23$ ;  $p$  FWE = 0.042; peak voxel:  $t = 4.76$ ;  $x = 24$ ,  $y = -75$ ,  $z = -18$ ; clusters are displayed here at  $p < 0.001$  (unc) for display purposes, and survive FWE correction ( $p < 0.05$ ) at peak-voxel level over  $p < 0.001$  (unc) (minimum cluster volume:  $kE > 10$ ). The cerebellar cluster also survived correction for nonstationary smoothness and cluster size ( $p$ -FWE < 0.05). Clusters are overlaid here on a diffeomorphic anatomical registration through exponentiated lie algebra GM template in Montreal Neurological Institute space (sagittal sections presented); heat bar represents  $t$  values; bar graphs display the average GM volume of each of those 3 clusters for the 3 different groups; error bars represent  $+1/-1$  SEM. aHPC = anterior hippocampus; FG = fusiform gyrus; ITG = inferior temporal gyrus;  $kE$  = cluster size (number of voxels); R, L = right, left (hemisphere); z-res = mean values residualized against age, sex, study (MAP, OPTIMA), and TIV across participants.

and reduced rsFC with a region in the right posterior cingulate extending to the precuneus and lingual gyrus (BA 23, 18). Patients with pathologic tearfulness also showed aberrantly increased rsALFF in the left fusiform gyrus (BA 37) and the ventral pons, as well as reduced rsALFF in the right inferior parietal lobule (BA 39; figure 3).

## Discussion

Our study is the first to investigate the nature and neural foundations of emotion dysregulation in a uniquely large, homogeneous cohort of patients after aLE, a nondegenerative neurologic syndrome characterized by primary limbic pathology.

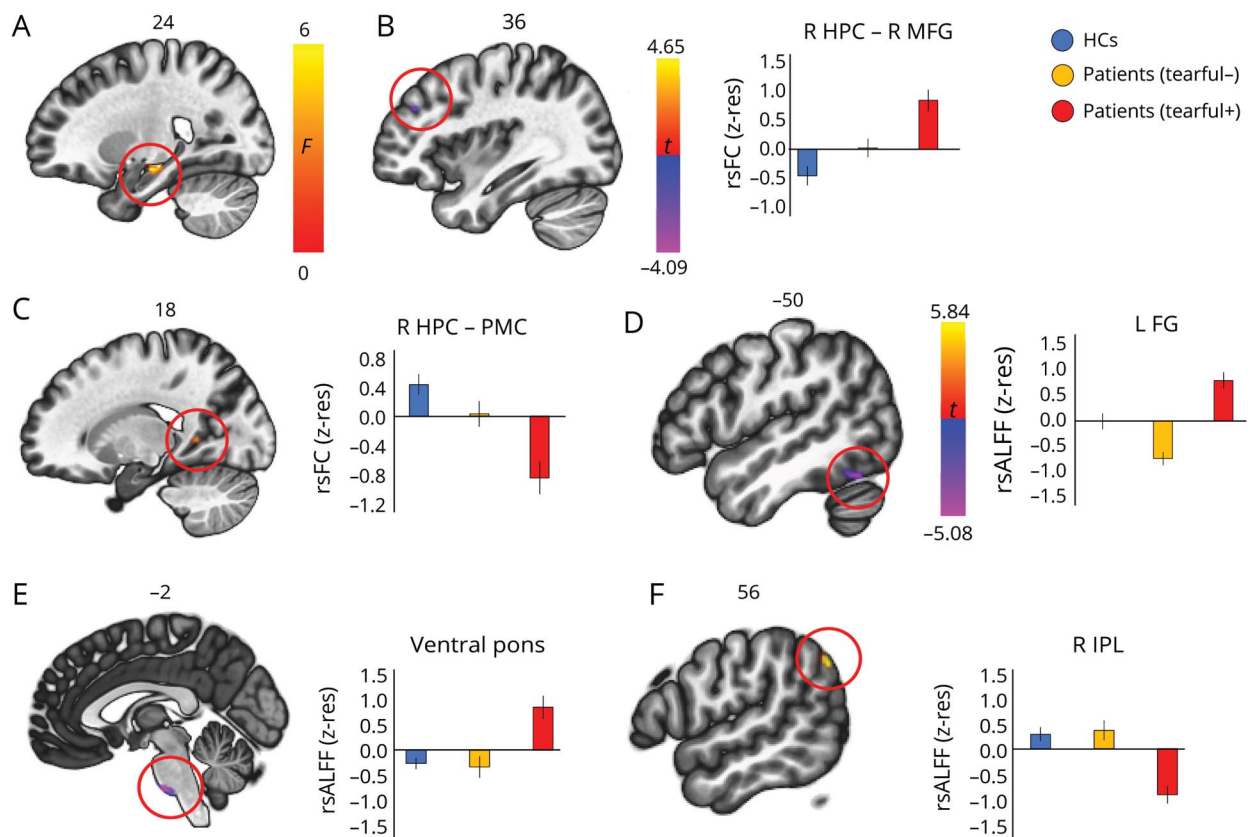
### Clinical features and correlates of emotion dysregulation

In particular, we describe a novel disorder of emotion regulation following aLE that is characterized by residual pathologic tearfulness. In our cohort, this was reported by 50% of patients. This symptom may be misdiagnosed as a manifestation of depression; for example, an indirect consequence of reduced quality of life due to memory impairment. If present alongside disinhibition and impulsiveness, it may otherwise be interpreted as a sign of a broader dysexecutive syndrome, continuous with that sometimes present in the acute stage of aLE.<sup>10</sup> However, we showed that pathologic

tearfulness was not associated with depression or impulsiveness, and occurred in the face of preserved executive function, and at normal levels of anxiety and irritability. Notably, no clinical or behavioral difference was detected between the patients with pathologic tearfulness and the equally sized subset with no such symptoms, apart from their scores on labile crying (CNS-LS).

To our knowledge, this symptom has only been mentioned in passing in case or case series studies of aLE<sup>13–15</sup> or in studies of larger yet less homogeneous cohorts of autoimmune encephalitis or epilepsy,<sup>38,39</sup> as “emotional lability,” “mood lability,” or “uncharacteristic tearfulness,” with no further discussion of its clinical features and correlates. Direct comparisons with other patient groups such as temporal lobe epilepsy will be needed in future studies. Moreover, the profile of pathologic tearfulness observed in our patients with aLE is strikingly different from the syndrome of pseudobulbar affect seen in other neurologic conditions (e.g., amyotrophic lateral sclerosis, stroke, multiple sclerosis, Parkinson disease, Alzheimer disease, and traumatic brain injury<sup>1–5</sup>), where dramatic and debilitating bouts of laughing or crying occur often without any appropriately valenced trigger<sup>7</sup> or congruence between the experience and expression of emotion.<sup>40</sup> For instance, none of our patients presented with pathologic laughing. Furthermore, most patients who presented with pathologic tearfulness readily identified specific triggers that were congruent with their albeit exaggerated emotional

**Figure 3** Functional abnormalities in patients with pathologic tearfulness



(A) A connectome-multivariate pattern analysis demonstrated that patients with pathologic tearfulness, as compared with the rest of the patients and healthy controls (HCs), showed abnormal resting-state functional connectivity (rsFC) between a region in the right hippocampal (HPC) head and body and the rest of the brain; right hippocampal head and body:  $24 -16 -14$ ,  $kE = 194$ ;  $p$  family-wise error-corrected (FWE) (cluster-level) = 0.001. (B-C) Patients with pathologic tearfulness showed (B) increased rsFC of the right hippocampus with the right middle frontal gyrus (MFG) ( $x = 36$ ,  $y = 40$ ,  $z = 30$ ;  $kE = 105$ ,  $p$  FWE = 0.03,  $t = -4.09$ ), and (C) reduced rsFC of the right hippocampus with the posteromedial cortex (PMC) (peak voxel:  $t = 4.65$ ;  $x = 18$ ,  $y = -50$ ,  $z = 6$ ;  $kE = 98$ ,  $p$  FWE = 0.04), extending to the right lingual gyrus. (D-F) Patients with pathologic tearfulness showed aberrantly increased resting-state amplitude of low frequency fluctuations (rsALFF) as compared with both the rest of the patients and healthy controls in (D) the left fusiform gyrus ( $kE = 69$ ; peak voxel:  $t = -4.72$ ;  $x = -50$ ,  $y = -60$ ,  $z = -20$ ), and (E) the ventral pons ( $kE = 74$ ; peak voxel:  $t = -5.08$ ;  $x = -2$ ,  $y = -20$ ,  $z = -44$ ;  $p$  FWE = 0.04), and reduced rsALFF in (F) the right inferior parietal lobule (peak voxel:  $t = 5.84$ ;  $x = 56$ ,  $y = -62$ ,  $z = 40$ ;  $kE = 112$ ;  $p$  FWE = 0.004). All clusters survive FWE correction ( $p < 0.05$ ) for cluster size over an uncorrected individual voxel threshold of  $p < 0.001$ . Error bars represent  $\pm 1$  SEM. FG = fusiform gyrus; IPL = inferior parietal lobule;  $kE$  = cluster size; R, L = right, left (hemisphere); z-res = mean rsFC and rsALFF values are residualized against age and sex across participants.

responses. Many of these triggers pertained to situations that evoked empathic concern (e.g., children or animals in distress or acting affectionately). This may suggest that aberrantly increased empathy underlies the patients' symptoms. There are, indeed, strong links between empathy and proneness to crying in the healthy population, which may suggest that increased empathy is associated with increased likelihood to experience distress, resulting in a higher crying proneness (see reference 41). Whereas the CBS did not disclose abnormality in patients with pathologic tearfulness, it may lack sensitivity in capturing increased, rather than decreased, empathy. Likewise, while the CNS-LS represents the most broadly employed self-report measure of affective lability,<sup>29</sup> more targeted instruments need to be employed, examining autonomic responses within the context of finer-grained behavioral tasks. This might lead to identification of similar symptoms in other neurologic disorders, such as temporal lobe epilepsy, where suggestive evidence has already been presented.<sup>42</sup>

## Structural and functional correlates

In line with our hypotheses, we found correlates of pathologic tearfulness in the anterior hippocampus, the posterior cingulate cortex, the ventral pons, and the neocerebellum. Whether these abnormalities result directly from the acute, primary pathology of aLE or occur subsequently as a form of functional diaschisis or as a consequence of Wallerian degeneration<sup>23</sup> remains to be determined (see also discussion in reference 12). Figure 4 summarizes the insight our study provides on the impairments underlying pathologic tearfulness in aLE, based on the model in reference 7.

## Anterior hippocampal volume

Right anterior hippocampal atrophy was associated with pathologic tearfulness. The right anterior hippocampal volume correlated across patients with scores for labile crying (CNS-LS), and patients with pathologic tearfulness showed less volume in the right anterior hippocampus in a voxel-wise



**Figure 4** Network abnormalities underlying pathologic tearfulness in autoimmune limbic encephalitis (aLE)

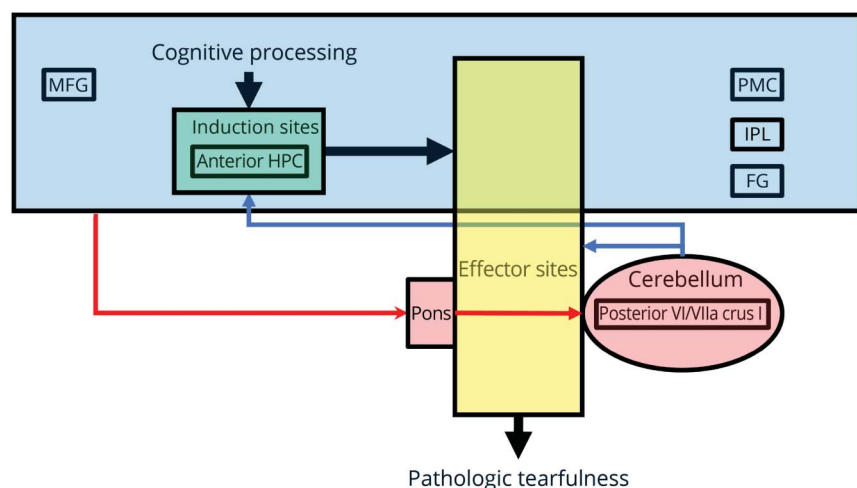


Illustration of the network abnormalities that may underlie pathologic tearfulness following aLE, based on our findings and on the model of “pathological laughing and crying” proposed by Parvizi et al. (2001). The locations mentioned in the figure are only those identified as abnormal in this study, and other regions are likely to be involved as well. Blue box = telencephalic sites that are assumed to process “emotionally competent” stimuli along with relevant context information that may include the middle frontal gyrus (MFG), the posterior ventral posteromedial cortex (PMC), the inferior parietal lobule (IPL), and the fusiform gyrus (FG); these act on the induction sites (green box) (e.g., ventromedial prefrontal cortex, anterior cingulate, amygdala, ventral striatum), which may also include the anterior hippocampus (HPC); these sites detect the stimuli and context, and act on the effector sites (yellow box) (e.g., motor cortex, hypothalamus, periaqueductal gray, cranial nerve nuclei), which trigger the emotional response. Red arrows = cerebro-ponto-cerebellar pathways, through which telencephalic areas convey to the cerebellum information on the emotionally competent stimuli along with context-related information; blue arrows = the cerebellum modulates the profile, intensity, and duration of the emotional responses in accordance with the context of the triggering stimulus by providing input to the induction and effector sites; structural and functional abnormalities in these sites may trigger emotional responses (pathologic tearfulness) that are contextually inappropriate.

whole-brain analysis. That hippocampal lesions should be associated with pathologic tearfulness is consistent with the involvement of limbic circuitry in emotion processing,<sup>17</sup> especially with the relationship between recurrent stress and hippocampal damage in nonhuman primates,<sup>19</sup> as well as with hippocampal pathology in psychiatric disorders.<sup>43</sup> In particular, the primate anterior hippocampus is the homologue of the rodent ventral hippocampus, which plays a role in negative affect, by virtue of its connectivity with the amygdala and the hypothalamus.<sup>18</sup> However, manually delineated hippocampal volumes did not differ between patients with and those without pathologic tearfulness, suggesting that atrophy may be confined to specific regions within the anterior hippocampus, a possibility that could be explored using subfield volumetry in future studies.

### Hippocampal dysconnectivity with the posteromedial cortex

Scores for labile crying (CNS-LS) strongly correlated with patients’ reduced right hippocampal rsFC with the ventral posteromedial cortex (posterior cingulate, retrosplenial cortex, and precuneus). Evidence from functional neuroimaging of healthy adults supports a role of this region in empathic concern for emotional suffering and admiring virtue.<sup>44</sup> Aberrant perspective taking and empathy has also been reported in hippocampal patients.<sup>45,46</sup>

### Pontocerebellar abnormalities

Volume reduction was also noted for patients with pathologic tearfulness in posterior portions of the right hemispheric cerebellar lobules VI/VIIa Crus I. These regions are embedded

within the default mode network, which is fundamental for self-referential cognition.<sup>47</sup> The cerebellum receives input from the basilar pons, and disruption of cortico-ponto-cerebellar circuits may lower the threshold for emotional expression.<sup>7</sup> Moreover, anatomical and electrophysiologic work has recently disclosed evidence for cerebellar (lobules VI/VIIa Crus I)–hippocampal interactions, possibly via the pons.<sup>25</sup> Consistent with these accounts, patients with pathologic tearfulness demonstrated aberrantly increased rsALFF in the ventral pons. The ventral pons relays input to the cerebellum from cortical regions including the parietal association cortices,<sup>48</sup> where these patients showed reduced right hippocampal rsFC. Interestingly, pontine hemodynamic hyperactivity has been reported previously in a single case study of pathologic laughing,<sup>6</sup> consistent with earlier reports of pathologic crying in cases of pontine myelinosi.<sup>8</sup>

### Abnormalities in the inferior parietal lobule, fusiform, and middle frontal gyri

Beyond the relationships that we had hypothesized, we also observed a series of unpredicted abnormalities associated with pathologic tearfulness: GM volume reduction and aberrantly increased rsALFF in the left fusiform gyrus, reduced rsALFF in the right inferior parietal lobule, and reduced rsFC between the right hippocampus and the right middle frontal gyrus. While activations in all of these regions have been repeatedly shown in self-face processing,<sup>49,50</sup> the aberrantly increased rsFC and rsALFF in patients with pathologic tearfulness require further investigation, as they may reflect compensatory or maladaptive mechanisms.

Our study describes a novel disorder of emotion regulation following aLE that is characterized by residual pathologic tearfulness, is not related to low mood or cognitive impairment, and is associated with specific abnormalities within networks supporting emotion regulation. Clinicians need to be aware of the potential for such symptoms to develop after aLE and of the distress they can cause. Furthermore, pathologic tearfulness offers a useful neuropsychological model for exploring the neural mechanisms of emotion regulation and may provide insight into the breakdown of these mechanisms across a wide range of neurologic conditions. This will inform the development and refinement of behavioral and pharmaceutical interventions.

## Acknowledgment

The authors thank the participants of this study.

## Study funding

C.R.B. is supported by a Medical Research Council Clinician Scientist Fellowship (MR/K010395/1). S.R.I. is supported by the Wellcome Trust (104079/Z/14/Z), the UCB–Oxford University Alliance, BMA Research Grants–Vera Down grant (2013) and Margaret Temple (2017), Epilepsy Research UK (P1201), and the Fulbright UK–US commission (MS Society Research Award). The research was funded/supported by the National Institute for Health Research (NIHR) Oxford Biomedical Research Centre. The views expressed are those of the authors and not necessarily those of the NHS, the NIHR, or the Department of Health.

## Disclosure

G. Argyropoulos, L. Moore, C. Loane, A. Roca-Fernandez, C. Lage-Martinez, and O. Gurau report no disclosures relevant to the manuscript. S. Irani is a coapplicant and receives royalties on patent application WO/2010/046716 (UK patent no. PCT/GB2009/051441) titled “Neurologic autoimmune disorders.” The patent has been licensed to Euroimmun AG for the development of assays for LGI1 and other VGKC-complex antibodies. A. Zeman and C. Butler report no disclosures relevant to the manuscript. Go to [Neurology.org/N](http://Neurology.org/N) for full disclosures.

## Publication history

Received by *Neurology* July 4, 2019. Accepted in final form October 3, 2019.

## Appendix Authors

Name	Location	Role	Contribution
<b>Georgios P.D. Argyropoulos, PhD</b>	University of Oxford, UK	Author	Study concept and design, major role in the acquisition of data and analysis, drafting the manuscript and preparing figures, interpreted the data, revised the

## Appendix (continued)

Name	Location	Role	Contribution
			manuscript for intellectual content
<b>Lauren Moore, BSc</b>	University of Oxford; University of Bath, UK	Author	Study concept and design, major role in the acquisition of data
<b>Clare Loane, PhD</b>	University of Oxford; King's College London, UK	Author	Study concept and design, major role in the acquisition of data
<b>Adriana Roca-Fernandez, MSc</b>	University of Oxford, UK	Author	Major role in the acquisition of data
<b>Carmen Lage-Martinez, MD</b>	University of Oxford, UK; University Hospital Marqués de Valdecilla, Santander, Spain	Author	Major role in the acquisition of data
<b>Oana Gurau, MSc</b>	University of Oxford, UK	Author	Major role in the acquisition of data
<b>Sarosh R. Irani, FRCP, PhD</b>	University of Oxford, UK	Author	Interpreted the data, revised the manuscript for intellectual content
<b>Adam Zeman, FRCP</b>	University of Exeter, UK	Author	Interpreted the data, revised the manuscript for intellectual content
<b>Christopher R. Butler, FRCP, PhD</b>	University of Oxford, UK; Imperial College London, London; Pontificia Universidad Católica de Chile	Author	Study concept and design, major role in the acquisition of data and analysis, drafting the manuscript or preparing figures, interpreted the data, revised the manuscript for intellectual content

## References

1. Floeter MK, Katipally R, Kim MP, et al. Impaired corticopontocerebellar tracts underlie pseudobulbar affect in motor neuron disorders. *Neurology* 2014;83:620–627.
2. Brooks BR, Thisted RA, Appel SH, et al. Treatment of pseudobulbar affect in ALS with dextromethorphan/quinidine: a randomized trial. *Neurology* 2004;63:1364–1370.
3. Kim JS, Choi-Kwon S, Elkind MSV. Poststroke depression and emotional incontinence: correlation with lesion location. *Neurology* 2000;54:1805–1810.
4. Choi-Kwon S, Han K, Choi S, et al. Poststroke depression and emotional incontinence: factors related to acute and subacute stages. *Neurology* 2012;78:1130–1137.
5. Fitzgerald KC, Salter A, Tyry T, Fox RJ, Cutter G, Marrie RA. Pseudobulbar affect. *Neurol Clin Pract* 2018;8:472–481.
6. Kosaka H, Omata N, Omori M, et al. Abnormal pontine activation in pathological laughing as shown by functional magnetic resonance imaging. *J Neurol Neurosurg Psychiatry* 2006;77:1376–1380.
7. Parvizi J, Anderson SW, Martin CO, Damasio H, Damasio AR. Pathological laughter and crying: a link to the cerebellum. *Brain* 2001;124:1708–1719.
8. Van Hilten JJ, Buruma OJS, Kessing P, Vlasveld LT. Pathologic crying as a prominent behavioral manifestation of central pontine myelinolysis. *Arch Neurol* 1988;45:936.
9. Thompson J, Bi M, Murchison AG, et al. The importance of early immunotherapy in patients with faciobrachial dystonic seizures. *Brain* 2018;141:348–356.
10. Butler CR, Miller TD, Kaur MS, et al. Persistent anterograde amnesia following limbic encephalitis associated with antibodies to the voltage-gated potassium channel complex. *J Neurol Neurosurg Psychiatry* 2014;85:387–391.

11. Finke C, Prüss H, Heine J, et al. Evaluation of cognitive deficits and structural hippocampal damage in encephalitis with leucine-rich, glioma-inactivated 1 antibodies. *JAMA Neurol* 2017;74:50–59.
12. Iranzo A, Graus F, Clover L, et al. Rapid eye movement sleep behavior disorder and potassium channel antibody-associated limbic encephalitis. *Ann Neurol* 2006;59:178–181.
13. Schimmel M, Frühwald MC, Bien CG. Limbic encephalitis with LGI1 antibodies in a 14-year-old boy. *Eur J Paediatr Neurol* 2018;22:190–193.
14. Somers KJ, Sola CL. Voltage-gated potassium channel-complex antibody-associated limbic encephalitis. *Psychosomatics* 2011;52:78–81.
15. Naasan G, Irani SR, Bettcher BM, Geschwind MD, Gelfand JM. Episodic bradycardia as neurocardiac prodrome to voltage-gated potassium channel complex/leucine-rich, glioma inactivated 1 antibody encephalitis. *JAMA Neurol* 2014;71:1300–1304.
16. Khan NL, Jeffree MA, Good C, Macleod W, Al-Sarraj S. Histopathology of VGKC antibody-associated limbic encephalitis. *Neurology* 2009;72:1703–1705.
17. Papez JW. A proposed mechanism of emotion. *Arch Neurol Psychiatry* 1937;38:725.
18. Bannerman D, Rawlins JN, McHugh S, et al. Regional dissociations within the hippocampus: memory and anxiety. *Neurosci Biobehav Rev* 2004;28:273–283.
19. Sapolsky RM, Uno H, Rebert CS, Finch CE. Hippocampal damage associated with prolonged glucocorticoid exposure in primates. *J Neurosci* 1990;10:2897–2902.
20. Wagner J, Witt JA, Helmstaedter C, Malter MP, Weber B, Elger CE. Automated volumetry of the mesiotemporal structures in antibody-associated limbic encephalitis. *J Neurol Neurosurg Psychiatry* 2015;86:735–742.
21. Holtmann O, Schlossmacher I, Moenig C, et al. Amygdala enlargement and emotional responses in (autoimmune) temporal lobe epilepsy. *Sci Rep* 2018;8:9561.
22. Bubbs EJ, Kinnavane L, Aggleton JP. Hippocampal-diencephalic-cingulate networks for memory and emotion: an anatomical guide. *Brain Neurosci Adv* 2017;1:239821281772344.
23. Loane C, Argyropoulos GPD, Roca-Fernández A, et al. Hippocampal network abnormalities explain amnesia after VGKC-Ab related autoimmune limbic encephalitis. *J Neurol Neurosurg Psychiatry* 2019;90:965–974.
24. Argyropoulos GPD, Loane C, Roca-Fernandez A, et al. Network-wide abnormalities explain memory variability in hippocampal amnesia. *Elife* 2019;8:e46156.
25. Watson TC, Obiang P, Torres-Herrera A, et al. Anatomical and physiological foundations of cerebello-hippocampal interaction. *Elife* 2019;8:e41896.
26. Graus F, Titulaer MJ, Balu R, et al. A clinical approach to diagnosis of autoimmune encephalitis. *Lancet Neurol* 2016;15:391–404.
27. Graus F, Escudero D, Oleaga L, et al. Syndrome and outcome of antibody-negative limbic encephalitis. *Eur J Neurol* 2018;25:1011–1016.
28. Malter MP, Elger CE, Surges R. Diagnostic value of CSF findings in antibody-associated limbic and anti-NMDAR-encephalitis. *Seizure* 2013;22:136–140.
29. Moore SR, Gresham LS, Bromberg MB, Kasarkis EJ, Smith RA. A self report measure of affective lability. *J Neurol Neurosurg Psychiatry* 1997;63:89–93.
30. Zigmond AS, Snaith RP. The Hospital Anxiety and Depression Scale. *Acta Psychiatr Scand* 1983;67:361–370.
31. Patton JH, Stanford MS, Barratt ES. Factor structure of the Barratt Impulsiveness Scale. *J Clin Psychol* 1995;51:768–774.
32. Craig KJ, Hietanen H, Markova IS, Berrios GE. The Irritability Questionnaire: a new scale for the measurement of irritability. *Psychiatry Res* 2008;159:367–375.
33. Baron-Cohen S, Wheelwright S. The Empathy Quotient: an investigation of adults with Asperger syndrome or high functioning autism, and normal sex differences. *J Autism Dev Disord* 2004;34:163–175.
34. Patenaude B, Smith SM, Kennedy DN, Jenkinson M. A Bayesian model of shape and appearance for subcortical brain segmentation. *Neuroimage* 2011;56:907–922.
35. Ashburner J. A fast diffeomorphic image registration algorithm. *Neuroimage* 2007;38:95–113.
36. Hayasaka S, Phan KLL, Liberzon I, Worsley KJ, Nichols TE. Nonstationary cluster-size inference with random field and permutation methods. *Neuroimage* 2004;22:676–687.
37. Whitfield-Gabrieli S, Nieto-Castanon A. Conn: a functional connectivity toolbox for correlated and anticorrelated brain networks. *Brain Connect* 2012;2:125–141.
38. Yeshokumar AK, Gordon-Lipkin E, Arenivas A, et al. Neurobehavioral outcomes in autoimmune encephalitis. *J Neuroimmunol* 2017;312:8–14.
39. Dubey D, Singh J, Britton JW, et al. Predictive models in the diagnosis and treatment of autoimmune epilepsy. *Epilepsia* 2017;58:1181–1189.
40. Parvizi J, Coburn KL, Shillcutt SD, Coffey CE, Lauterbach EC, Mendez MF. Neuroanatomy of pathological laughing and crying: a report of the American Neuropsychiatric Association Committee on Research. *J Neuropsychiatry Clin Neurosci* 2009;21:75–87.
41. Denckla CA, Fiori KL, Vingerhoets AJJM. Development of the crying proneness scale: associations among crying proneness, empathy, attachment, and age. *J Pers Assess* 2014;96:619–631.
42. Savage SA, Butler CR, Hodges JR, Zeman AZ. Transient epileptic amnesia over twenty years: long-term follow-up of a case series with three detailed reports. *Seizure* 2016;43:48–55.
43. Fanselow MS, Dong HWW. Are the dorsal and ventral hippocampus functionally distinct structures? *Neuron* 2010;65:7–19.
44. Immordino-Yang MH, McColl A, Damasio H, Damasio A. Neural correlates of admiration and compassion. *Proc Natl Acad Sci USA* 2009;106:8021–8026.
45. Beadle JN, Tranel D, Cohen NJ, Duff MC. Empathy in hippocampal amnesia. *Front Psychol* 2013;4:69.
46. McCormick C, Rosenthal CR, Miller TD, Maguire EA. Hippocampal damage increases deontological responses during moral decision making. *J Neurosci* 2016;36:12157–12167.
47. Buckner RL, Krienen FM, Castellanos A, Diaz JC, Yeo BTT. The organization of the human cerebellum estimated by intrinsic functional connectivity. *J Neurophysiol* 2011;106:2322–2345.
48. Schmahmann JD, Pandya DN. Anatomical investigation of projections to the basis pontis from posterior parietal association cortices in rhesus monkey. *J Comp Neurol* 1989;289:53–73.
49. Platek SM, Wathne K, Tierney NG, Thomson JW. Neural correlates of self-face recognition: an effect-location meta-analysis. *Brain Res* 2008;1232:173–184.
50. Platek SM, Loughhead JW, Gur RC, et al. Neural substrates for functionally discriminating self-face from personally familiar faces. *Hum Brain Mapp* 2006;27:91–98.

# Neurology®

## Pathologic tearfulness after limbic encephalitis: A novel disorder and its neural basis

Georgios P.D. Argyropoulos, Lauren Moore, Clare Loane, et al.

*Neurology* 2020;94:e1320-e1335 Published Online before print January 24, 2020

DOI 10.1212/WNL.00000000000008934

**This information is current as of January 24, 2020**

<b>Updated Information &amp; Services</b>	including high resolution figures, can be found at: <a href="http://n.neurology.org/content/94/12/e1320.full">http://n.neurology.org/content/94/12/e1320.full</a>
<b>References</b>	This article cites 50 articles, 14 of which you can access for free at: <a href="http://n.neurology.org/content/94/12/e1320.full#ref-list-1">http://n.neurology.org/content/94/12/e1320.full#ref-list-1</a>
<b>Subspecialty Collections</b>	This article, along with others on similar topics, appears in the following collection(s): <b>All Psychiatric disorders</b> <a href="http://n.neurology.org/cgi/collection/all_psychiatric_disorders">http://n.neurology.org/cgi/collection/all_psychiatric_disorders</a> <b>Encephalitis</b> <a href="http://n.neurology.org/cgi/collection/encephalitis">http://n.neurology.org/cgi/collection/encephalitis</a> <b>fMRI</b> <a href="http://n.neurology.org/cgi/collection/fmri">http://n.neurology.org/cgi/collection/fmri</a> <b>Hippocampal sclerosis</b> <a href="http://n.neurology.org/cgi/collection/hippocampal_sclerosis">http://n.neurology.org/cgi/collection/hippocampal_sclerosis</a> <b>MRI</b> <a href="http://n.neurology.org/cgi/collection/mri">http://n.neurology.org/cgi/collection/mri</a>
<b>Permissions &amp; Licensing</b>	Information about reproducing this article in parts (figures, tables) or in its entirety can be found online at: <a href="http://www.neurology.org/about/about_the_journal#permissions">http://www.neurology.org/about/about_the_journal#permissions</a>
<b>Reprints</b>	Information about ordering reprints can be found online: <a href="http://n.neurology.org/subscribers/advertise">http://n.neurology.org/subscribers/advertise</a>

*Neurology*® is the official journal of the American Academy of Neurology. Published continuously since 1951, it is now a weekly with 48 issues per year. Copyright © 2020 The Author(s). Published by Wolters Kluwer Health, Inc. on behalf of the American Academy of Neurology. All rights reserved. Print ISSN: 0028-3878. Online ISSN: 1526-632X.

