

Quantitative estimates of glacial refugia for chimpanzees (*Pan troglodytes*) since the Last Interglacial (120,000 BP)

Christopher D. Barratt^{1,2}  | Jack D. Lester² | Paolo Gratton^{2,3} | Renske E. Onstein¹  | Ammie K. Kalan² | Maureen S. McCarthy² | Gaëlle Bocksberger² | Lauren C. White² | Linda Vigilant² | Paula Dieguez² | Barrie Abdulai⁴ | Thierry Aebischer⁵ | Anthony Agbor⁶ | Alfred K. Assumang⁷ | Emma Bailey² | Mattia Bessone² | Bartelijntje Buys⁸ | Joana S. Carvalho⁹ | Rebecca Chancellor¹⁰ | Heather Cohen² | Emmanuel Danquah⁷ | Tobias Deschner² | Zacharie N. Dongmo¹¹ | Osiris A. Doumbé¹² | Jef Dupain¹³ | Chris S. Duvall¹⁴ | Manasseh Eno-Nku¹¹ | Gilles Etoga¹¹ | Anh Galat-Luong¹⁵ | Rosa Garriga¹⁶ | Sylvain Gatti¹⁷ | Andrea Ghiurghi¹⁸ | Annemarie Goedmakers⁸ | Anne-Céline Granjon² | Dismas Hakizimana¹⁹ | Josephine Head² | Daniela Hedwig²⁰ | Ilka Herbinger²¹ | Veerle Hermans^{22,23} | Sorrel Jones² | Jessica Junker¹ | Parag Kadam²⁴ | Mohamed Kambi² | Ivonne Kienast² | Célestin Y. Kouakou²⁵ | Kouamé P. N'Goran¹¹ | Kevin E. Langergraber^{26,27} | Juan Lapuente^{2,28} | Anne Laudisoit^{29,30} | Kevin C. Lee^{2,26} | Fiona Maisels^{31,32} | Nadia Mirghani³³ | Deborah Moore³⁴ | Bethan Morgan^{32,35,36} | David Morgan³⁷ | Emily Neil² | Sonia Nicholl² | Louis Nkambi³⁸ | Anne Ntongho¹¹ | Christopher Orbell³⁹ | Lucy Jayne Ormsby² | Liliana Pacheco⁴⁰ | Alex K. Piel⁴¹ | Lilian Pinteá⁴² | Andrew J. Plumptre⁴³  | Aaron Rundus⁴⁴ | Crickette Sanz^{45,46} | Volker Sommer^{41,47} | Tenekwetche Sop^{1,2} | Fiona A. Stewart^{9,46} | Jacqueline Sunderland-Groves⁴⁸ | Nikki Tagg²³ | Angelique Todd⁴⁹ | Els Ton⁸ | Joost van Schijndel⁸ | Hilde VanLeeuwe³¹ | Elleni Vendras² | Adam Welsh² | José F. C. Wenceslau⁸ | Erin G. Wessling⁵⁰  | Jacob Willie²³ | Roman M. Wittig^{2,22} | Nakashima Yoshihiro⁵¹ | Yisa Ginath Yuh^{2,52} | Kyle Yurkiw^{2,53} | Christophe Boesch²  | Mimi Arandjelovic²  | Hjalmar Kühl^{1,2} 

¹German Centre for Integrative Biodiversity Research (iDiv), Halle-Jena-Leipzig, Leipzig, Germany

²Department of Primatology, Max Planck Institute for Evolutionary Anthropology, Leipzig, Germany

³Department of Biology, University of Rome "Tor Vergata", Roma, Italy

[†]Deborah Moore passed away on 22nd March 2016. Her contributions as an author are listed in the Author Contributions section.

This is an open access article under the terms of the Creative Commons Attribution License, which permits use, distribution and reproduction in any medium, provided the original work is properly cited.

© 2021 The Authors. *American Journal of Primatology* published by Wiley Periodicals LLC.

⁴Research for Evidence-based and Achievable Decisions Sierra Leone (READ-SL), Sierra Leone

⁵Conservation et Plan d'aménagement de l'Aire de Conservation de Chinko, African Parks Network, Chinko Project, Kocho, RCA and active collaborator of the University of Fribourg, WegmannLab, Fribourg, Switzerland

⁶African Parks Centurion Building, Lonehill, South Africa

⁷Department of Wildlife and Range Management, Faculty of Renewable Natural Resources, Kwame Nkrumah University of Science and Technology, Kumasi, Ghana

⁸Chimbo Foundation, Oudemirdum, Netherlands

⁹School of Biological and Environmental Sciences, Liverpool John Moores University, Liverpool, UK

¹⁰Departments of Anthropology & Sociology and Psychology, West Chester University, West Chester, Pennsylvania, USA

¹¹World Wide Fund for Nature, Panda House Bastos, Yaounde, Cameroon

¹²Sekakoh Organization, Bafoussam, Cameroon

¹³Antwerp Zoo Foundation, Antwerp Zoo Society, Antwerpen, Belgium

¹⁴Department of Geography and Environmental Studies, University of New Mexico, Albuquerque, New Mexico, USA

¹⁵IRD (The French National Research Institute for Development), France

¹⁶Tacugama Chimpanzee Sanctuary, Freetown, Sierra Leone

¹⁷West African Primate Conservation Action (WAPCA), Accra, Ghana

¹⁸Independent Researcher, Rome, Italy

¹⁹Department of Biology, University of Burundi, Bujumbura, Burundi

²⁰Elephant Listening Project, Center for Conservation Bioacoustics, Cornell Lab of Ornithology, Cornell University, Ithaca, New York, USA

²¹WWF Germany, Berlin, Germany

²²Taï Chimpanzee Project, CSRS, Abidjan, Ivory Coast

²³Centre for Research and Conservation, Antwerp Zoo Society, Antwerpen, Belgium

²⁴Department of Archaeology and Anthropology, University of Cambridge, Cambridge, UK

²⁵Université Jean Lorougnon Guédé, Daloa, Ivory Coast

²⁶School of Human Evolution and Social Change, Arizona State University, Tempe, Arizona, USA

²⁷Institute of Human Origins, Arizona State University, Tempe, Arizona, USA

²⁸Comoé Chimpanzee Conservation Project, Comoé National Park, Kakpin, Ivory Coast

²⁹Ecohealth Alliance, New York City, New York, USA

³⁰Department of Biology, Evolutionary Ecology Group, University of Antwerp, Antwerpen, Belgium

³¹Wildlife Conservation Society (WCS), Bronx, New York, USA

³²Faculty of Natural Sciences, University of Stirling, Stirling, Scotland, UK

³³Jane Goodall Institute Spain and Senegal, Dindefelo Biological Station, Dindefelo, Kedougou, Senegal

³⁴Department of Anthropology, University of Texas at San Antonio, San Antonio, Texas, USA

³⁵San Diego Zoo Global, Escondido, California, USA

³⁶Ebo Forest Research Project, Yaounde, Cameroon

³⁷Lester E Fisher Center for the Study and Conservation of Apes, Lincoln Park Zoo, Chicago, Illinois, USA

³⁸Environment and Rural Development Foundation, Buea, Cameroon

³⁹Panthera, New York City, New York, USA

⁴⁰WARA Conservation Project – GALF, Guinea

⁴¹Department of Anthropology, University College London, London, UK

⁴²The Jane Goodall Institute, Vienna, Virginia, USA

⁴³Key Biodiversity Area Secretariat, c/o BirdLife International, Cambridge, UK

⁴⁴Department of Psychology, West Chester University, West Chester, Pennsylvania, USA

⁴⁵Department of Anthropology, Washington University in St. Louis, Saint Louis, Missouri, USA

⁴⁶Wildlife Conservation Society, Congo Program, Brazzaville, Republic of Congo

⁴⁷Gashaka Primate Project, Serti, Taraba State, Nigeria

⁴⁸Faculty of Forestry, University of British Columbia, Vancouver, British Columbia, Canada

⁴⁹WWF-CAR, Bangui, Central African Republic

⁵⁰Department of Human Evolutionary Biology, Harvard University, Cambridge, Massachusetts, USA

⁵¹College of Bioresource Science, Nihon University, Fujisawa, Kanagawa, Japan

⁵²Department of Geography, Planning and Environmental Studies, University of Concordia, Montréal, Quebec, Canada

⁵³Pan Verus Project, Outamba-Kilimi National Park, Sierra Leone

Correspondence

Christopher D. Barratt, German Centre for Integrative Biodiversity Research (iDiv) Halle-Jena-Leipzig, Puschstrasse 4, 04103, Leipzig (Office A.01.14/2), Germany.
Email: c.d.barratt@gmail.com

Abstract

Paleoclimate reconstructions have enhanced our understanding of how past climates have shaped present-day biodiversity. We hypothesize that the geographic extent of Pleistocene forest refugia and suitable habitat fluctuated significantly in time during the late Quaternary for chimpanzees (*Pan troglodytes*). Using bioclimatic variables representing monthly temperature and precipitation estimates, past human population density data, and an extensive database of georeferenced presence points, we built a model of changing habitat suitability for chimpanzees at fine spatio-temporal scales dating back to the Last Interglacial (120,000 BP). Our models cover a spatial resolution of 0.0467° (approximately 5.19 km² grid cells) and a temporal resolution of between 1000 and 4000 years. Using our model, we mapped habitat stability over time using three approaches, comparing our modeled stability estimates to existing knowledge of Afrotropical refugia, as well as contemporary patterns of major keystone tropical food resources used by chimpanzees, figs (Moraceae), and palms (Arecaceae). Results show habitat stability congruent with known glacial refugia across Africa, suggesting their extents may have been underestimated for chimpanzees, with potentially up to approximately 60,000 km² of previously unrecognized glacial refugia. The refugia we highlight coincide with higher species richness for figs and palms. Our results provide spatio-temporally explicit insights into the role of refugia across the chimpanzee range, forming the empirical foundation for developing and testing hypotheses about behavioral, ecological, and genetic diversity with additional data. This methodology can be applied to other species and geographic areas when sufficient data are available.

KEYWORDS

Africa, diversification, ensemble, paleoclimate, species distribution modeling

1 | INTRODUCTION

Paleoclimate reconstructions have greatly enhanced our understanding of how biodiversity has been shaped globally since the late Quaternary, including inferences on range shifts, extinctions, and the evolution of distinct lineages (Hewitt, 2000, 2004; Sandel et al., 2011; Svenning et al., 2015). For example, climatic variability through time has played a major role in determining the uneven distribution of biodiversity across the Afrotropics (Demenocal, 1995; Maslin et al., 2014; Sepulchre et al., 2006; Trauth et al., 2005). Although a high proportion of African biodiversity is concentrated in a handful of forested hotspots and centers of endemism (Kingdon, 1990; Myers et al., 2000), these areas are geographically diffuse and historically complex, with idiosyncratic characteristics including heterogeneous topography, hydrological features, and highly dynamic and unique forest histories. Many Afrotropical forest lineages across different taxonomic groups are assumed to have tracked available habitat as it

shifted throughout the Quaternary, contracting into refugia during glaciation, and often expanding during postglacial periods to colonize (or recolonize) new geographic areas. However, spatio-temporal reconstructions of Pleistocene forest refugia across the Afrotropics are often limited to broad-scale maps without detailed information at local scales (Maley, 1996; Mayr & O'Hara, 1986). A more detailed quantification of the spatio-temporal distribution of forest refugia has been hampered by the lack of high-resolution paleoecological data with most previous reconstructions being limited to coarse spatial grains (e.g., 2.5 × 3.75°, Singarayer & Valdes, 2010) or to only a handful of temporal snapshots during the Quaternary (e.g., last interglacial, last glacial maximum, and late holocene; Hijmans et al., 2005). Here, we address this limitation by modeling the historical habitat suitability of chimpanzees (*Pan troglodytes*) across the Afrotropics using a comprehensive database of recently collected georeferenced presence points spanning their entire range, paleoclimate reconstructions, and human density data since the Last Interglacial (120,000 BP).

Chimpanzees are an appropriate focal species for our approach due to their wide geographical distribution and high detectability. This means that their presence in an area is unlikely to be overlooked even in places that are only sporadically surveyed, as is the case for many poorly known and remote field sites across the Afrotropics. Chimpanzees occur across 21 African countries, from dense moist forest to arid savannah, from sea level up to an altitude of 2800 m and varying levels of anthropogenic pressure (Humble et al., 2016). Furthermore, their wide distribution encompasses high levels of ecological, behavioral, and genetic diversity amongst populations, providing a model system to study the availability of glacial refugia over time across diverse habitats and geographic regions. Four subspecies are currently described: *P. troglodytes verus* from West Africa, *P. troglodytes ellioti* from Nigeria and Cameroon, *P. troglodytes troglodytes* from Central Africa, and *P. troglodytes schweinfurthii* from Central and Eastern Africa. Chimpanzee diversity is also apparent in their social organization (community size ranges from 12 to 200, Langergraber et al., 2017), feeding ecology, and diet (proportions and species of vertebrates, insects and fruits consumed varies among populations (Basabose, 2002; McGrew et al., 1988; Nishida & Uehara, 1983; Wrangham, 1977), and range sizes (from around 3 km² to over 70 km² (Herbinger et al., 2001; Hunt & McGrew, 2002; Pruetz & Bertolani, 2009; Wessling et al., 2018). Behavioral complexity in chimpanzees is highly variable, with diverse repertoires of tool use (e.g. sticks, stones and leaves to access insects, honey, meat, seeds and algae, and water filtering) evident across forest and savannah populations (Galat-Luong et al., 2009; Köhl et al., 2019; Whiten et al., 1999). Additionally, genetic differentiation is also profound across the range, with four currently recognized subspecies and markedly variable population substructure and genetic diversity within each of these (De Manuel et al., 2016; Fünfstick et al., 2015; Lester et al., 2021; Mitchell et al., 2015; Prado-Martinez et al., 2013).

It is suspected that historical climatic changes and associated population size changes and migrations have been a major driver of chimpanzee genetic and cultural differentiation since at least the Last Interglacial (Prado-Martinez et al., 2013). To date, our understanding of the spatio-temporal climatic changes which could have influenced the mechanisms driving chimpanzee ecological, behavioral, and genetic diversity has been limited by the absence of information about historical climate change at fine spatial scales across the Afrotropics, a shortfall which this study aims to address. Specifically, we hypothesize that previously identified glacial refugia played a major role in the habitat suitability and persistence of chimpanzees (*P. troglodytes*) during late Quaternary climate fluctuations. Beyond chimpanzees, the data set created in this study could be an important tool used to study other taxonomic groups and biological communities within Afrotropical forest ecosystems.

2 | METHODS

The research described herein complied with protocols and laws approved by the relevant authorities in each country where data was collected.

2.1 | General workflow

To summarize our general workflow (Figure 1), we modeled contemporary chimpanzee habitat suitability using a database of presence points and six noncorrelated climatic and anthropogenic variables that could be expected to influence their distribution. As separate species distribution modeling algorithms may provide biased results because of their sensitivity to the data and the mathematical functions utilized, we built ensemble models which combine multiple replicates of several different modeling algorithms together (Araújo & New, 2007). These models based on contemporary chimpanzee habitat suitability were then projected into the past at paleoclimate timescales (back to the Last Interglacial, 120,000 years BP) to assess how habitat suitability has changed through time. We then calculated various estimates of stability per pixel to represent the relative variation in habitat suitability over time, identifying areas of long-term habitat suitability.

We provide methodological details for each of the steps in our workflow in the following subsections, with extended technical information for *Reconstructing African paleoclimatic conditions back to the Last Interglacial* and *Species distribution modeling of chimpanzees* made provided in Online Supplementary Material (Text S1). Unless otherwise specified, all analyses were implemented in R (version 4.1.0, R Core Team, 2019).

2.2 | Reconstructing African paleoclimatic conditions back to the Last Interglacial

We obtained data on paleoclimatic conditions in Africa since the Last Interglacial from Bell et al. (2017). These data are based on the Hadley Centre Coupled Model version 3 general circulation model (HadCM3), a climate change prediction model routinely utilized by the Intergovernmental Panel on Climate Change (IPCC, 2007, 2014). These data represent 62 snapshots of global climatic conditions at 1000 year intervals from the present back to the Last Glacial Maximum (LGM, ~22,000 BP), at 2000 year intervals from the LGM to 80,000 BP, and at 4000 year intervals from 80,000 BP back to the Last Interglacial (120,000 BP). These data comprised of eight climate variables: mean annual temperature (bioclim_01), temperature seasonality (bioclim_04), mean temperature of the warmest (bioclim_10) and coldest quarters (bioclim_11), mean annual precipitation (bioclim_12), precipitation seasonality (bioclim_15), and precipitation of the wettest (bioclim_16) and driest quarters (bioclim_17) for each snapshot. We set the geographic extent of our models to encompass both the contemporary and potential historical habitat suitability of chimpanzees (McBrearty & Jablonski, 2005), from -18° to 32° longitude and -10° to 16° latitude. This extent includes the current distribution range of bonobos (*P. paniscus*), the sister species of chimpanzees, spatially separated from the latter by the Congo River. We included the bonobo distribution in our models due to previous detection of historic admixture between chimpanzees and bonobos based on genomic data (De Manuel et al., 2016; Kuhlilm

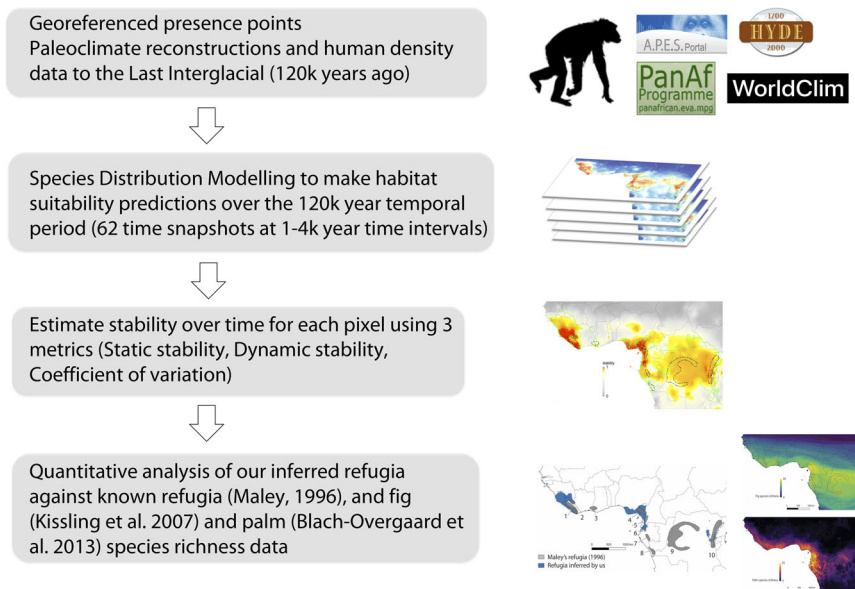


FIGURE 1 General workflow for our modeling approach, using georeferenced presence points, paleoclimatic reconstructions, and human density data to the Last Interglacial period as input data. Ensemble Species Distribution models for chimpanzees are built and evaluated, projected overall temporal snapshots ($n = 62$, until 120,000 years ago) and then stability over time for each pixel is calculate (three metrics, dynamic, static stability, and co-efficient of variation). These three output stability maps are then quantitatively compared with assumed forest refugia (Maley, 1996), as well as species richness of major keystone food resources for primates (figs, Kissling et al., 2007) and palms (Blach-Overgaard et al., 2013)

et al., 2019), suggesting that chimpanzees may have occasionally been found in these areas.

To account for anthropogenic effects on chimpanzee habitat suitability, we also included a spatial layer available from the HyDE database (Klein Goldewijk et al., 2011), which provides information on modeled past human population density based on population and agricultural data. The calculation of this spatial layer is based on historical population, cropland, and pasture statistics combined with satellite information and specific allocation algorithms (which change over time) to create spatially explicit maps covering the last 12,000 years BP. We linearly extrapolated the human population densities back in time from 12,000 BP (i.e., the last available data from the HyDe database) uniformly to 120,000 BP and downscaled it so that it matched the temporal and spatial scale of our paleoclimate reconstructions. We selected these climatic and anthropogenic variables to reflect biologically informative conditions likely to have influenced chimpanzee habitat suitability, and because these variables were available at paleoclimatic timescales. However, we acknowledge that additional variables may be important to influence chimpanzee distributions (see *Caveats* heading of Discussion).

2.3 | Species distribution modeling of chimpanzees

We compiled a database of 139,902 georeferenced chimpanzee presence point records (nests, sightings, feces, and footprints) from our own fieldwork, from the IUCN SSC A.P.E.S. database, a collaborative initiative to centralize great ape population surveillance data

(<http://apes.eva.mpg.de/>) and from the Pan African Programme: The Cultured Chimpanzee (<http://panafrican.eva.mpg.de/>). For each occurrence record, subspecies were determined by their geographical location. In total, this data, collected between 1984 and 2006, represent over fifty collaborating wildlife research institutions across the entire distributional range of chimpanzees.

We followed recommended guidelines for constructing SDMs (Araujo et al., 2019; Merow et al., 2013, Merow et al., 2014) to minimize bias in our models. This included spatially rarefying the presence data so that occurrences were not overclustered together (minimum distance of 10 km between each point), resulting in 1677 unique presence points remaining that were used to build SDMs. We selected background points (pseudo-absences) from a 0.5° buffer radius around presence points, to emphasize factors locally relevant in distinguishing suitable from unsuitable habitat, while adequately sampling the range of climatic conditions for chimpanzees (VanDerWal et al., 2009). Furthermore, to minimize spatial autocorrelation in our models we reduced our nine variables to six due to high co-correlations (Pearson's $r > 0.6$). Our retained variables were: annual mean temperature, temperature seasonality, annual precipitation, precipitation of wettest quarter, precipitation of driest quarter, and human density.

As individual modeling algorithm approaches may introduce additional biases, we built ensemble models combining multiple replicates of several different modeling algorithms to represent alternate possible states of the system being modeled (Araújo & New, 2007). Due to their combined power, ensemble models are widely accepted to provide more accurate results than single models

(Forester et al., 2013). We constructed an ensemble species distribution model (SDM) representing the contemporary habitat suitability of chimpanzees (i.e., all combined subspecies) using the “sdm” R package version 1.0-46 (Naimi & Araújo, 2016). We used five cross-validated replicates each of 14 different modeling algorithms available in the sdm R package, evaluating the performance of each modeling algorithm based on the Area Under the Curve of a Receiver Operating Characteristics plot (AUC, Fielding & Bell, 1997) and True Skill Statistic (TSS, Allouche et al., 2006). We retained only modeling algorithms that performed adequately (AUC > 0.8, and TSS > 0.5, Bell et al., 2017) in an ensemble model prediction using five cross-validated replicates of each algorithm, weighting the contribution of each modeling algorithm to the ensemble model by their AUC. Given that we do not expect the variables to be equally important in influencing chimpanzee presence, for each modeling algorithm and the ensemble model we also measured the permutation importance of predictor variables across each model iteration using the “getVarImp” function in the “sdm” R package.

2.4 | Paleoclimatic modeling and habitat stability

To identify geographic areas where high habitat suitability for chimpanzees has remained stable since the Last Interglacial (i.e., to identify refugia where the effects of climate change have been less pronounced than surrounding areas), we projected our SDM back in time to obtain a habitat suitability estimate for each pixel at each paleoclimate snapshot. We projected our contemporary ensemble model onto the 62 snapshots of downscaled paleoclimate reconstructions and human density data since the last interglacial using the “predict” function of the “sdm” R package. In doing so, we assumed that the realized ecological niche of chimpanzees represented by our predictor variables remained relatively constant over this period. Though there is some controversy with this assumption, especially for species with narrow ecological niches (see Veloz et al., 2012), the large geographical extent and wide range of climatic conditions that our spatial and climatic data encompass (i.e., most of the Afrotropics), and the ability of our study species to track climate change minimize our concerns for a geographically widespread species such as the chimpanzee. However, we acknowledge there may be exceptions at local scales over such long temporal intervals where ecological niches have shifted over time, for example in subspecies. Based on these per pixel estimates of habitat suitability over time, we then evaluated suitability changes through space and time using three approaches: static stability (Barratt et al., 2017, Hugall et al., 2002), and the coefficient of variation % (CV), which do not consider dispersal between pixels, and dynamic stability (Graham et al., 2010; Rosauer et al., 2015), which account for how chimpanzees may have tracked suitable climate conditions across time.

To calculate the CV stability in each pixel across all of the temporal snapshots of habitat suitability, we created a rasterstack of model outputs for each temporal snapshot and used the cv function of the “raster” package version 3.1-5 (Hijmans et al., 2011). For the

static stability estimate, we summed the negative log of suitability through time for each pixel and took the exponent of this value to give a value between 0 and 1 to represent the degree to which the pixel has continuously provided suitable habitat. Similarly, dynamic stability reads the suitability at each time period but permits dispersal across time periods (i.e. paleoclimate time snapshots) using a cost distance (a function of habitat suitability), based on a user-defined maximum dispersal distance. To calculate dynamic stability per pixel we allowed a conservative 5 m/year dispersal rate, which amounts to a maximum dispersal distance of 600 km over the 120,000 year time period for chimpanzee populations since the last interglacial, approximately matching the historical distribution inferred by McBrearty and Jablonski (2005) shown in Figure 2. Using the dynamic stability approach, a pixel is considered as stable as long as pixels within the defined dispersal distance have suitable climate in adjacent time steps (i.e., so an area of suitable habitat for chimpanzees does not necessarily need to be consistently stable if they can disperse there from adjacent pixels to track climate change). All static and dynamic stability surfaces were calculated using modified R scripts from Graham et al. (2010) provided by Jeremy VanDerWal.

2.5 | Validating our inferred refugia using additional data

To supplement the qualitative assessment of stability maps, we quantitatively compared our modeled areas of long-term habitat stability (i.e., refugia) against the most detailed available estimates of Afrotropical refugia by Maley (1996), based on a combination of paleopalynological (fossil pollen) data and species richness and endemism patterns. Though Maley's refugia are widely used, we feel that they may not accurately reflect microrefugia at smaller spatial scales due to a lack of comprehensive surveying effort across the Afrotropics. To do this we first defined the threshold for pixels in our model outputs to be considered as refugia as having a dynamic stability value of 0.97 over the 62 temporal snapshots covering 120,000 years. We then calculated the number of pixels present in each of Maley's refugia and expressed the proportion of each of then known refugia that were captured by our analyses as a percentage. Moreover, we report additional areas inferred as refugia which are not inferred by Maley (1996) in terms of their size and location.

As an additional validation of our putative refugia, we tested our obtained habitat stability estimates for chimpanzees against species richness data for two keystone tropical plant families, figs (*Ficus*, Moraceae) and palms (Arecaceae). Based on the premise that there should be greater species richness in refugia than surrounding non refugial areas, and a high diversity of food plants should support higher densities of chimpanzees in refugial areas, our habitat stability estimates should show some correlation with the fig and palm data. To this end we utilized data from Onstein et al. (2020), which incorporated distribution data for figs from Kissling et al. (2007), and for palms from Blach-Overgaard et al. (2013). Fig species richness was calculated from digitized range map GIS shapefiles which were

converted to binary presence-absence raster maps and then summed in R to give species richness in each pixel. Palm species richness was calculated in a similar way, but directly from the species distribution models, so instead of binary presence-absence per pixel the values represent probabilistic values of a species occurring in that pixel. Both the fig and palm data were clipped to the exact same size as our study region so that direct comparisons could be made with our stability estimates. To assess correlations between the data sets, we stacked the raster layers (dynamic stability, static stability, CV, fig species richness, palm species richness in R using the “raster” package version 3.1-5 and conducted Pearson's correlation tests between them. We visualized these correlations using the “corrplot” version 0.84 R package (Wei & Simko, 2017).

2.6 | Sensitivity analyses

Our final contemporary chimpanzee habitat suitability model (Figure 3) represents all four currently recognized subspecies combined (Humble et al., 2016), but as the four subspecies diverged from one another within the last one million years, we also repeated the SDM, paleoclimate projections and stability estimations described above for each subspecies separately to ensure that our model shown in Figure 3 did not underpredict habitat suitability at local scales that may be ecologically important for each subspecies. The number of presence points (and background points) used for the subspecies, *P. troglodytes verus*, *P. troglodytes ellioti*, *P. troglodytes troglodytes*, and *P. troglodytes schweinfurthii* were 519, 134, 663, and

451, respectively). As a further sensitivity analysis, we also repeated all analyses (i.e., combined subspecies together and for each subspecies separately) using presence data spatially rarefied so that no points were within 25 km of each other to assess whether spatial bias in the presence data was influencing the output models (number of presence points and background points for combined subspecies and for *P. troglodytes verus*, *P. troglodytes ellioti*, *P. troglodytes troglodytes*, and *P. troglodytes schweinfurthii* separately were 658, 225, 57, 212, and 164, respectively) (Figure S1). To statistically test how well our contemporary habitat suitability models and stability models (static stability, dynamic stability, and CV stability) matched one another across sensitivity analyses (with different spatial rarefaction in the input presence points) we conducted Pearson's correlation tests in R using the “raster” package version 3.1-5, comparing both matching sets of output rasters. We also visually compared our model outputs against other published contemporary habitat suitability estimates available for chimpanzees which are available at different spatial resolutions and extents than our models (Heinicke et al., 2019; Jantz et al., 2016; Junker et al., 2012; Sesink Clee et al., 2015; Strindberg et al., 2018).

3 | RESULTS

3.1 | Contemporary chimpanzee habitat suitability

Our contemporary habitat suitability model performed generally well at the species level (i.e., all four subspecies combined), with AUC >

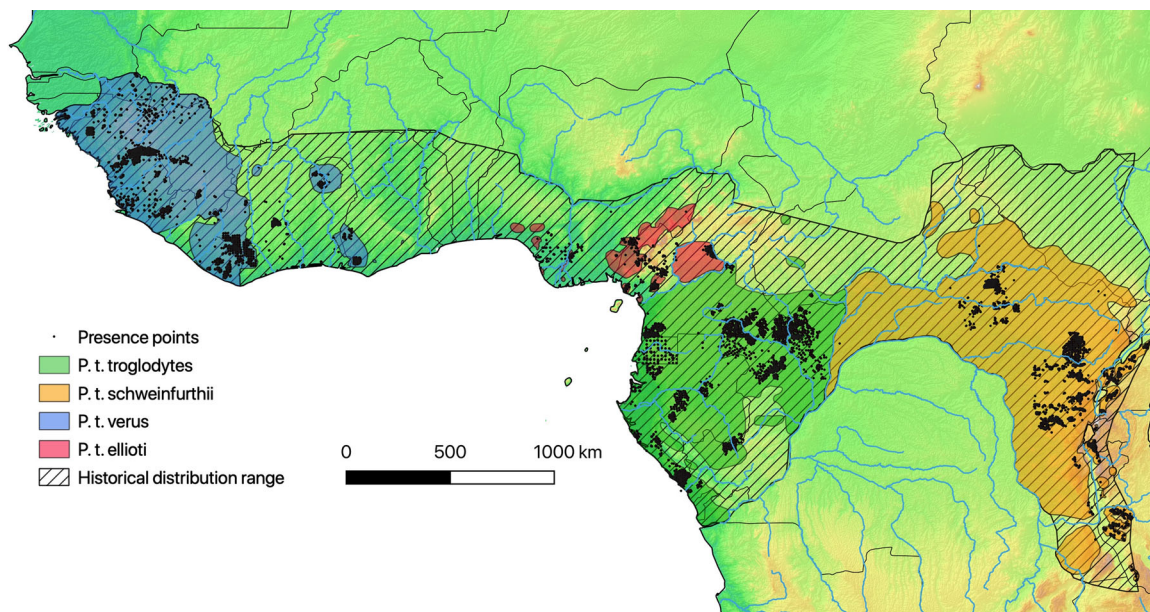


FIGURE 2 Current chimpanzee distribution and presence points from our own fieldwork, from the IUCN SSC A.P.E.S. database (<http://apes.eva.mpg.de/>) and from the Pan African Programme: The Cultured Chimpanzee (<http://panafrican.eva.mpg.de/>). Currently recognized subspecies ranges are depicted by colored polygons (Humble et al., 2016), with black dots representing sampling localities ($n = 139,902$ georeferenced presence points) used for species distribution modeling, historical distribution range (ca. 500kya, McBrearty & Jablonski, 2005) represented by diagonal shading. Country borders, topography (lowlands = green, highlands = brown), and major hydrological features are also shown

0.8 and TSS > 0.5 for 12 of the 14 tested modeling algorithms (Table 1). This was similar for sensitivity analyses on subspecies models *P. troglodytes schweinfurthii* ($n = 13$), *P. troglodytes troglodytes* ($n = 13$), and *P. troglodytes verus* ($n = 11$) (Table S1). Bioclim and bioclim.dismo algorithms performed poorly for most models (i.e., low AUC < 0.8, TSS < 0.5) and were therefore excluded from the ensemble models. For *P. troglodytes ellioti*, all 14 modeling algorithms passed our AUC and TSS thresholds and were retained in the ensemble. The best performing modeling algorithms (i.e., higher AUC and TSS) were most often Maxent, Generalized Additive Models, and Random Forest (Tables 1 and S1). We believe these differences between model performance to be due to the nature of the input data, where some model assumptions simply match the characteristics of the predictors, presences, and background better (for a detailed overview, see Araújo et al., 2019). These results were also consistent when performing the sensitivity analyses using only presence points rarefied to a minimum distance of 25 km, indicating that our results are robust against spatial bias in the input data (Table S1), albeit with generally lower AUC and TSS, most probably due to the reduced number of presence points used to train the models.

The contemporary habitat suitability model for the full species (Figure 3a) showed more extensive areas of high suitability compared with sensitivity analyses when subspecies were modeled separately, and suitability was also lower using the 25 km rarefied input presence points (Figure S2 and Table S2), most probably in both cases due to the lower sample sizes (presences) to capture the true ecological niche. Our contemporary habitat suitability models for chimpanzees (Figure 3a) approximately matched those previously published (Heinicke et al., 2019; Jantz et al., 2016; Junker et al., 2012; Sesink Clees et al., 2015; Strindberg et al., 2018) but there were several differences, likely due to the different variables used to build models that are unavailable or inappropriate at the timescales we projected (e.g., forest cover and change, distance to roads/rivers, and disease dynamics), and the different spatial resolution and extent of the models. For example, our models predicted much higher habitat suitability in west Africa for *P. troglodytes verus* across parts of Sierra Leone, Liberia, and Guinea than some previous work (Jantz et al., 2016; Junker et al., 2012), though they are similar to the modeled chimpanzee density patterns reported by Heinicke et al. (2019). Our models tended to underpredict suitability for *P. troglodytes troglodytes* in a small part of central Gabon but generally matching the remainder of this subspecies range compared to Strindberg et al. (2018). For *P. troglodytes ellioti*, modeled habitat suitability mirrors the predicted chimpanzee distributions shown by Sesink-Clees et al. (2015) very closely, though the areas of higher habitat suitability are slightly larger in our models. For *P. troglodytes schweinfurthii*, our models are concordant with those of Junker et al. (2012) and Jantz et al. (2016).

Summarizing variable permutation importance indicated that precipitation-related predictors (bioclim_16 – precipitation of wettest quarter, bioclim_17 – precipitation of driest quarter, and in particular bioclim_12 – annual rainfall) were more important than temperature-related predictors (bioclim_01 – annual mean temperature and

bioclim_04 – temperature seasonality) and human population density in explaining chimpanzee habitat suitability (Figure 3b,c). These results were consistent across all sensitivity analyses including models using the 25 km rarefied input presence points and for separate subspecies models except for *P. troglodytes ellioti* (bioclim_16 with the highest permutation importance rather than bioclim_12) and *P. troglodytes schweinfurthii*, which had similar variable importance between all temperature and precipitation predictor variables, and low importance for human density (Figure S3).

3.2 | Habitat suitability through time and identifying potential refugia

We provide an animated gif image of habitat suitability over time for each of the 62 paleoclimatic snapshots for the full species for visualization (Figure S4, https://figshare.com/articles/figure/Fig_S4_gif/14815263). Stability estimates (Figure 4) indicated that the areas that have remained consistently more climatically stable closely match the forest refugia posited by previous studies (Maley, 1996; Mayr & O'Hara, 1986), with our data providing estimates at finer spatial scales than the highest resolution previous work available (i.e., the most detailed polygons, Maley, 1996). Dynamic stability and CV stability estimates showed slightly larger areas of suitability than static stability estimates (Figure 4, S5–S7, Table 2), though all were highly congruent, highlighting the same general regions as areas of long-term habitat stability. However, when thresholding models to define refugia (>0.97 stability for dynamic and static stability, less than 3% variation per pixel in CV stability), dynamic stability and CV stability estimates captured higher proportions of each of Maley's (1996) refugia than static stability (Figure S8). Dynamic stability and CV stability estimates corroborated that refugia suggested in previous studies have remained more stable than surrounding areas, capturing major parts of several known refugia (numbered in Figure 4a) including two of the three refugia in the Upper Guinea Forests (#1 and #2), two refugia in the Lower Guinea Forests (#4 and #5), one of three refugia through Gabon and Congo-Brazzaville (#6), and several parts of the fragmented refugia across the Albertine Rift (#10) (Maley, 1996; Mayr & O'Hara, 1986). However our models did not capture parts of these refugia in some cases, and also failed to capture several others including those in West Africa (#3) and Central Africa (#7, #8, and #9), as well as some of the central African microrefugia described by Leal (2004), though the CV stability estimate did also capture a proportion of refuge #7.

Our results suggest that chimpanzees may have occupied stable habitat across a wider range than indicated by previously identified rainforest refugia for equatorial Africa (Figures 4a and S8; Table 3), with potential refugial areas for chimpanzees based on dynamic stability estimates of well over 60,000 km² across the species range. In West Africa around the current *P. troglodytes verus* range, these refugia (~25,000 km²) are concentrated in the Upper Guinea Forests in Sierra Leone (Loma Mountains), Liberia (Kpo Mountains), and southern Guinea (Massif du Ziam and Nimba Mountains). Similar in

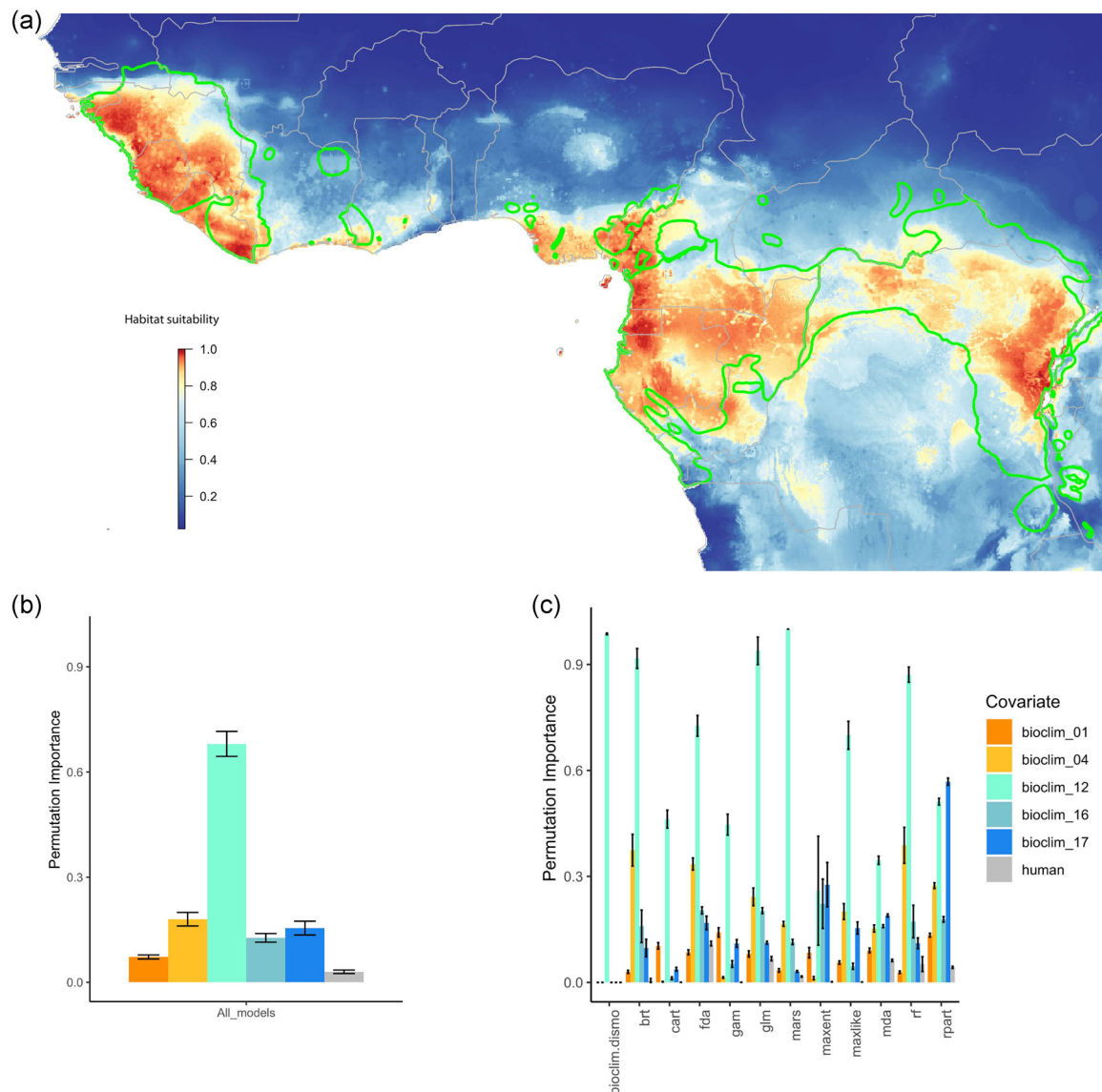


FIGURE 3 (a) Contemporary habitat suitability model for chimpanzees (ensemble model of 5 cross-validated replicates of 12 modeling algorithms) and predictor variable permutation importance b) averaged across all modeling algorithms, and c) per individual modeling algorithm. Axes represents predictor variable permutation importance (y axis), for each modeling algorithm (x axis), bioclim_01 = Mean annual temperature, bioclim_04 = temperature seasonality, bioclim_12 = mean annual precipitation, bioclim_16 = precipitation of the wettest quarter, bioclim_17 = precipitation of the driest quarter, human = human density. Country borders (gray lines) and chimpanzee subspecies ranges (green lines, Humle et al., 2016) are also shown

extent, in and around the *P. troglodytes ellioti* range, areas surrounding the mountains of the Cameroon Volcanic Line (Mt. Cameroon, Manengouba, Bamboutos, and Lebiale Highlands) and forests in coastal regions of Nigeria and Cameroon are highlighted as refugia by our approach. For *P. troglodytes troglodytes*, our analyses suggest that refugial areas are fewer (~5000 km²), but generally surround the Mts. De Cristal–Massif du Chaillu mountain chain that runs from northwest to southeast from central Equatorial Guinea through northern and Central Gabon and parts of Congo-Brazzaville. In Eastern Africa, again approximately 5000 km² of potential refugia not previously identified were identified in parts of the Albertine Rift near the *P. troglodytes schweinfurthii* range and surrounding forests (Kahuzi-Biega, Ituri, Bwindi, Ruwenzori Mountains, and Kibale).

Based on the other two stability metrics (static stability and CV stability), additional pixels of previously unrecognized refugia are fewer than dynamic stability estimates but still represent over approximately 12,500 km² and ~55,000 km², respectively. Habitat suitability and stability estimates across our sensitivity analyses using different levels of presence points spatial rarefaction (10 km vs. 25 km) were highly consistent (Pearson's $r > 0.971$ for all contemporary habitat suitability models and dynamic and static stability estimates, and Pearson's $r > 0.677$ for all CV stability estimates, Table S2, Figures S5–S7). Our dynamic and static habitat stability estimates for the 10 km rarefied data set (Figure 4d,e) showed relatively high correlations with fig and palm species richness (Figure 4b,c), with Pearson's r ranging between 0.535 and 0.862. Our

TABLE 1 Performance of each individual modeling algorithm based on five cross-validated replicates for full species (*Pan troglodytes*) and each of the four currently recognized subspecies using presence points rarefied to minimum 10 km distance from one another

Modeling algorithm	<i>P. troglodytes</i>		<i>P. troglodytes</i> <i>verus</i>		<i>P. troglodytes</i> <i>elliotti</i>		<i>P. troglodytes troglodytes</i>		<i>P. troglodytes</i> <i>schweinfurthii</i>	
	AUC	TSS	AUC	TSS	AUC	TSS	AUC	TSS	AUC	TSS
bioclim	0.63	0.23	0.64	0.3	0.8	0.59	0.75	0.45	0.73	0.41
bioclim.dismo	0.72	0.34	0.76	0.46	0.94	0.86	0.89	0.73	0.85	0.6
brt	0.8	0.51	0.84	0.57	0.97	0.88	0.9	0.68	0.89	0.61
cart	0.84	0.59	0.86	0.62	0.92	0.87	0.94	0.83	0.89	0.72
fda	0.81	0.51	0.83	0.58	0.97	0.85	0.85	0.67	0.89	0.64
gam	0.87	0.62	0.88	0.65	0.98	0.94	0.97	0.88	0.92	0.73
glm	0.82	0.56	0.82	0.57	0.97	0.88	0.88	0.71	0.91	0.67
mars	0.87	0.63	0.88	0.65	0.98	0.93	0.95	0.84	0.92	0.72
maxent	0.87	0.61	0.89	0.64	0.98	0.94	0.95	0.83	0.93	0.76
maxlike	0.82	0.57	0.84	0.59	0.97	0.89	0.86	0.73	0.88	0.65
mda	0.83	0.54	0.84	0.61	0.97	0.91	0.91	0.75	0.88	0.65
rf	0.94	0.77	0.9	0.74	0.98	0.95	0.98	0.9	0.97	0.89
rpart	0.85	0.63	0.86	0.62	0.95	0.9	0.95	0.84	0.89	0.74
svm	0.91	0.68	0.79	0.66	0.97	0.9	0.97	0.86	0.93	0.73
Total <i>n</i> models in ensemble	12		11		14		13		13	

Note: Numbers indicate Area Under the Curve of a Receiver Operating Characteristics plot (AUC) and True Skill Statistic (TSS) for each modeling algorithm, with high values indicating better model performance. Bold italic values represent AUC < 0.8 or TSS < 0.5, the minimum threshold we set for that modeling algorithm to be included in the ensemble models. Modeling algorithm abbreviations – bioclim: Bioclim, bioclim.dismo: Bioclim from the dismo R package. Abbreviations: brt, boosted regression trees; cart, classification and regression trees; fda, flexible discriminant analysis; gam, generalized additive model; glm, generalized linear model; mars, multivariate adaptive regression spline; maxent, maximum entropy; maxlike, maximum entropy-like; mda, mixture discriminant analysis; rf, random forest; rpart, recursive partitioning and regression trees; svm, support vector machine.

CV stability estimates also showed high correlations with fig and palm species richness (Pearson's *r* between −0.523 and 0.679). For CV stability, the correlations are negative because, unlike the dynamic and static stability estimates, the closer to 0 a pixel is the more stable it is overtime. These results were similar when using the 25 km rarefied data set, with Pearson's *r* for dynamic and static stability against palms and figs between 0.484 and 0.818, and CV stability between −0.474 and −0.616 (Figure S9). These results were generally similar when performing the same analyses for the subspecies separately (Figure S9), with the exception of *P. troglodytes schweinfurthii* which showed lower correlations, especially for palms.

4 | DISCUSSION

We hypothesized that the geographic extent of Pleistocene forest refugia and suitable habitat fluctuated significantly in time during the late Quaternary for chimpanzees (*P. troglodytes*), testing this by building spatio-temporally explicit models of habitat suitability across Africa over the last 120,000 years, since the Last Interglacial. We found several areas of high habitat suitability that have remained

stable over this time period, largely matching estimates of putative refugia from previous studies (Maley, 1996; Mayr & O'Hara, 1986), and areas of higher species richness for figs and palms, both keystone tropical plant families known to be important for primates generally (Onstein et al., 2020). Our refugia also approximately match patterns of higher effective diversity across the species range inferred from genetic data (microsatellites) by Lester et al. (2021). Our results suggest that for chimpanzees, most of these previous refugia are underestimated in size, implying that additional geographic areas (potentially representing over 60,000 km² in total) may have supported suitable habitats during glacial climate fluctuations. This is further supported by fig and palm species richness patterns, which are not solely restricted to known refugia (Maley, 1996) showing relatively high overlap with our proposed refugia. These extended refugial areas include parts of the Upper Guinea Forests in Sierra Leone (Loma Mountains), Liberia (Kpo Mountains) and southern Guinea (Massif du Ziama and Nimba mountains), and in and around three important African mountain chains: the Lower Guinea Forests surrounding the mountains of the Cameroon Volcanic Line, the Monts de Cristal-Massif du Chaillu mountain chain that passes through central Equatorial Guinea, northern and central Gabon, to

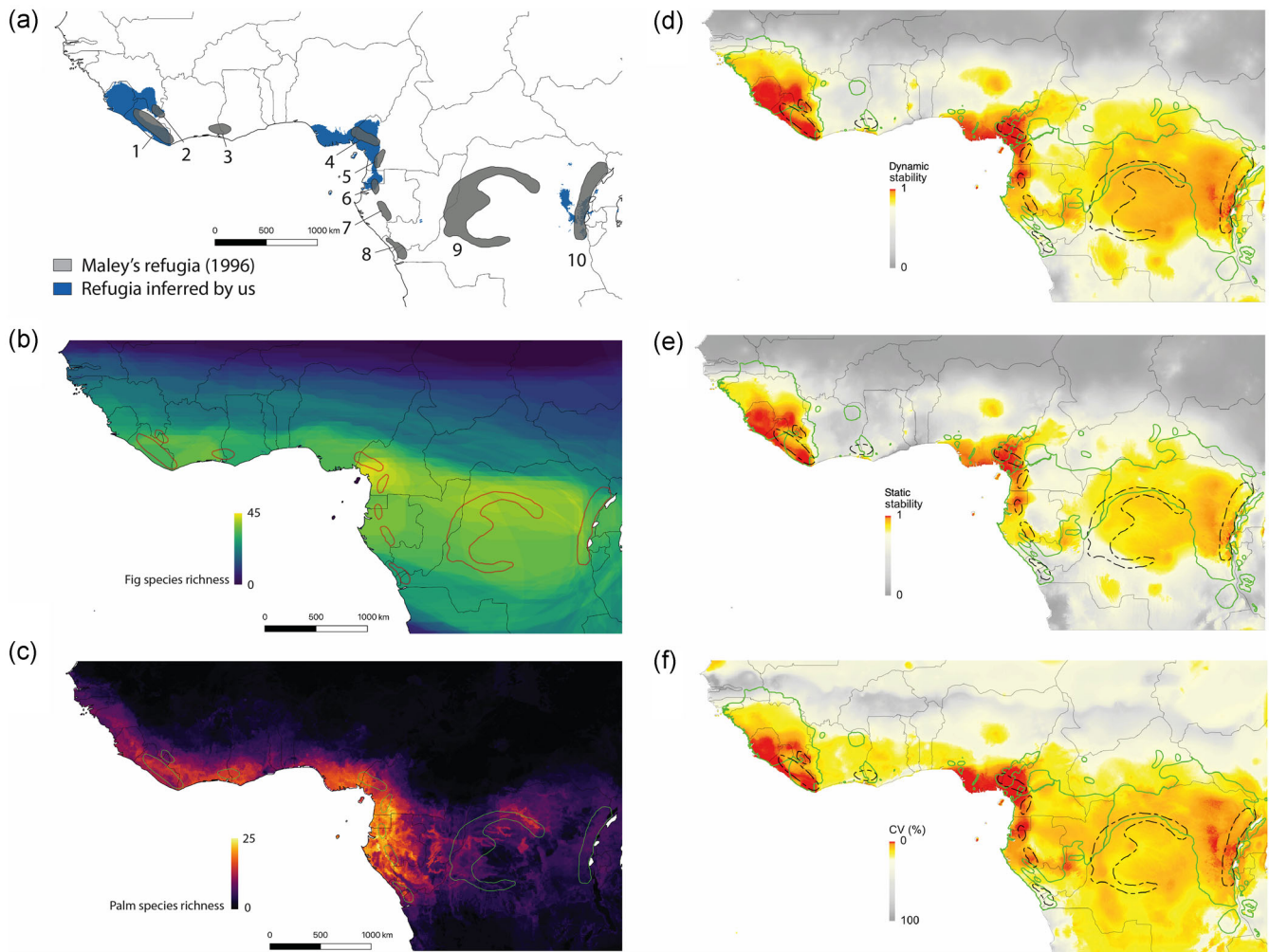


FIGURE 4 Stability of chimpanzee habitat suitability over 62 snapshots of paleoclimate reconstructions representing the past 120,000 years using the full species data set. (a) Our refugia (in blue) are defined as all pixels with a dynamic stability value > 0.97 in habitat suitability maps over the 120,000 year time period, compared with refugia defined by Maley (1996) (in gray, numbered and referred to in Table 2). (b) Fig species richness based on data from Kissling et al. (2008). (c) Palm species richness based on data from Blach-Overgaard et al. (2013). (d) Refugia inferred by the dynamic stability approach. (e) Refugia inferred by the static stability approach. (f) Refugia inferred by the CV stability approach. In maps (b) and (c), more yellow colors represent higher species richness (previous estimates of forest refugia (Maley, 1996) drawn in red, and green, respectively). In maps (d)–(f), warmer colors represent areas of higher suitability over time that have remained stable compared with previous estimates of forest refugia (dotted black lines, Maley, 1996). Country borders (gray lines) and chimpanzee subspecies ranges (green lines, Humle et al., 2016) are also shown

the border with the Republic of Congo, and the Albertine Rift. Below we discuss how our results can complement current knowledge about refugia across the Afrotropics for chimpanzees, noting some caveats for their interpretation. We also identify some future directions for how these data can be integrated with other data types to build testable hypotheses about chimpanzee ecological, behavioral, and genetic diversity.

4.1 | Understanding historical and recent factors shaping contemporary biodiversity patterns

Many previous studies have shown that climate change throughout the late Quaternary had a profound influence on the contemporary

distribution and structure of species and populations globally (Davis & Shaw, 2001; Ellegren & Galtier, 2016; Hewitt, 2000, 2004; Sandel et al., 2011; Svenning et al., 2015). In Africa it has been hypothesized that forest refugia, often in mountainous regions, are important areas for buffering the effects of climate change on biodiversity over paleoclimatic scales, supporting rare species and unique genetic variants (Fjeldsaå & Lovett, 1997; Mayr & O'Hara, 1986). Although initially these refugia were identified using species distributional patterns for birds and plants, an increasing number of recent studies have utilized molecular data to infer the geographical location of intraspecific diversity (i.e., lineages or populations within species) across the Afrotropics. These studies have demonstrated contemporary phylogeographic patterns that suggest broadly concordant glacial refugia in mammals (Bohoussou et al., 2015; Bryja et al., 2017; Bryja,

TABLE 2 Quantitative assessment of refugia results

Maley refuge #	Geographic location	Total refuge area (pixels)	CV refugia (pixels)	Static refugia (pixels)	Dynamic refugia (pixels)	Static %	Dynamic %	CV %
1	Liberia/CIV	2407	1215	659	1677	27.4	69.6	50.5
2	Liberia/Guinea/CIV	467	139	8	390	1.7	83.5	29.8
3	CIV/Ghana	778	0	0	0	0	0	0
4	Nigeria/Cameroon	1239	1239	649	1215	52.4	98.1	100
5	Cameroon	536	80	0	151	0	28.2	14.9
6	Eq. Guinea/Gabon	378	269	26	243	6.9	64.3	71.2
7	Gabon	636	57	0	0	0	0	8.9
8	Congo Brazzaville/DRC	792	0	0	0	0	0	0
9	Congo Brazzaville/DRC	12090	0	0	0	0	0	0
10	Albertine Rift	4345	435	23	877	0.5	20.2	10.0

Note: Each of the stability estimates are thresholded so that only highly stable areas over time are classified as refugia (dynamic and static stability threshold = 0.97, CV threshold = maximum 3% coefficient of variation). These areas are then quantified in terms of their size in pixels (each pixel represents ~5 km²), and compared with Maley's (1996) refugia expressed as the % of each refuge recovered by our models.

Abbreviation: CV, coefficient of variation %; CIV, ivory coast; DRC, democratic republic of the Congo.

TABLE 3 Additional refugia identified by our models that are not captured by Maley (1996)

Subspecies	Static stability extra area (pixels)	Dynamic stability extra area (pixels)	CV stability extra area (pixels)
<i>verus</i>	2537	5555	3037
<i>elliotti</i>	228	894	970
<i>trogodytes</i>	20	1273	1033
<i>schweinfurthii</i>	8	1043	687
undefined	24	4199	4844

Note: Each of the modeled areas assigned as highly stable are categorized by subspecies (i.e., if the pixel falls within the current IUCN range of each subspecies, or "undefined" if the pixel is outside the current range).

Abbreviation: CV: coefficient of variation %.

Mikula, Patzenhauerová, et al., 2014; Bryja, Mikula, Šumbera, et al., 2014; Gaubert et al., 2016; Mizerovská et al., 2019; Nicolas et al., 2011), including other primates, (Anthony et al., 2014; Clifford et al., 2004; Gonder et al., 2011; Pozzi, 2016; Telfer et al., 2003), amphibians (Charles et al., 2018; Leaché et al., 2019; Portik et al., 2017), and plants (Faye et al., 2016; Hardy et al., 2013; Piñeiro et al., 2017, 2019), albeit with some differences between species due to different ecological characteristics and idiosyncratic responses to climatic changes (Lowe et al., 2010).

Our results are concordant with most of the broadly defined glacial refugia for the Afrotropics (Maley, 1996; Mayr & O'Hara, 1986) but suggest that potentially stable areas of chimpanzee habitat may have been larger. This may well be due to the ecological and behavioral flexibility exhibited by chimpanzees (Kühl et al., 2019; Wessling

et al., 2018; Whiten et al., 1999), with their ability to tolerate drier savannah-like conditions, for example at the edges of their current distribution range where forest interdigitates with savannah, resulting in a broad ecological niche. This flexibility may also account for our estimates of chimpanzee habitat suitability and stability over time being generally higher when modeling all four subspecies combined compared with modeling each subspecies separately, as the ecological niche of each subspecies is narrower than that of the whole species and there may well have been adaptations to local climatic conditions for each subspecies. Since the turn of the 20th century, the higher deforestation rates around the edges of chimpanzee range (e.g., in West Africa) than those at the core of their range (Aleman et al., 2018), may have caused the local extirpation of some populations, and potentially stimulated ecological and behavioral diversification in others. Historical climate changes combined with these more recent anthropogenic effects may help to explain some of the complex patterns of behavioral and cultural diversity described in chimpanzees across different parts of Africa (Kühl et al., 2019; Whiten et al., 1999) and particularly why some behaviors are geographically disjunct (e.g., accumulative stone-throwing, Kühl et al. (2016), algae fishing (Boesch et al., 2017). However, these complex patterns of diversity are further complicated by multiple factors, including disease dynamics (Leroy et al., 2004), the bushmeat trade (Bennett et al., 2007), and local genetic adaptations (Schmidt et al., 2019).

4.2 | Caveats

Although our reconstructions of paleoclimatic refugia align with those of Maley (1996) and Mayr and Hara (1986), and with more recent molecular evidence in vertebrates and plants, we advocate

caution in their interpretation despite the statistical robustness across our sensitivity analyses. First, our assumption of niche conservatism over time for chimpanzees may not be optimal as it is largely unproven for chimpanzees, and also many other species. Several authors have demonstrated that contemporary niches are not necessarily good predictors of historical mammal distributions based on the fossil record (Davis et al., 2014; Maguire et al., 2016; Veloz et al., 2012; Waltari & Guralnick, 2009), though we are unfortunately unable to use fossil data to validate our models due to the existence of only a single chimpanzee fossil in East Africa (McBrearty & Jablonski, 2005). Second, our approach uses a limited number of climatic and anthropogenic variables, and although we generally find similar contemporary habitat suitability predictions and/or density predictions as other studies (Heinicke et al., 2019; Jantz et al., 2016; Junker et al., 2012; Sesink Clee et al., 2015; Strindberg et al., 2018), differences exist, likely due to the discordance of the predictor variables used between ours and other approaches. Unfortunately, we also lack sufficient spatio-temporal data on important predictor variables such as historical vegetation types, hydrological features, and disease dynamics over the past 120,000 years, which may be important for predicting habitat suitability of chimpanzees at local scales. Some of these shortfalls may be partially remedied with the utilization of additional data (e.g., genetic and additional fossil data), for example, to validate if our models represent accurate measures of chimpanzee distribution over time, or to validate the role of rivers as barriers to gene flow (a view recently challenged by Lester et al., 2021). However, for the purpose of our predictive modeling we were forced to restrict our variables to those with the appropriate temporal resolution (i.e., paleoclimate and modeled past human density). Third, it should be noted that the climate data we use are statistically downscaled from coarser resolution imagery from a single general circulation model (GCM) using locally available climate data (HadCM3). Though these types of data are widely used in a number of other studies (e.g., Bell et al., 2017; Graham et al., 2010; Rosauer et al., 2015), their accuracy may be improved by combining and testing different predictions in the ensemble model to capture variation between GCMs. Underlying assumptions regarding the HyDE human density data should also be acknowledged, mainly regarding the uncertainty and reliability of historical data which often had no other independent data to validate it, and also the extrapolation techniques used to complete gaps in data collection. We extrapolated the human density data from 12,000 years to 120,000 years before present, which is likely not an accurate reflection of human population density changes over this period for two reasons; the HyDE data is based on agriculturalist populations, which do not necessarily represent the same population density and trends as hunter-gatherer communities. Additionally, related to this point, extrapolating from a time of change (12,000 years, roughly the origins of agriculture), probably makes the population density estimates less reliable for earlier times. In spite of these problems, the variance of these data in each pixel becomes smaller over deeper time due to much smaller past population densities, and in our results the variable importance of this predictor was lower than other (environmental) predictors in

our SDMs. Fourth, our SDMs use available contemporary chimpanzee presence points from across their entire range, but there remain significant sampling gaps affecting models because of a lack of exploration due to unstable political situations and disease outbreaks (e.g., parts of the *P. troglodytes schweinfurthii* distribution range in DRC, Central African Republic and South Sudan). Finally, related to our discussion about ecological and behavioral flexibility we would like to emphasize that our models should not be interpreted as areas of forest or savannah stability per se, but rather as areas that are suitable for chimpanzees, defined by their ecological niche.

4.3 | Future directions for understanding diversification mechanisms

By modeling habitat suitability and stability over the last 120,000 years at high spatial and temporal resolution, we provide a foundation to investigate the diversification mechanisms underlying patterns of ecological, behavioral, and genetic diversity in chimpanzees. We suggest that future research should exploit our data set to generate testable hypotheses about chimpanzee population diversity by combining our spatio-temporally explicit models with ecological, behavioral, and molecular data. For example, habitat suitability fluctuations over time for a given set of populations may be explicitly tested against home range sizes, measures of genetic diversity, or estimates of effective population size changes over time, or to the presence or absence of certain behaviors. Furthermore, hypotheses about genetic connectivity and behavioral transmission between populations across landscapes over time could be tested by integrating spatio-temporally explicit connectivity metrics based on circuit theory (Dickson et al., 2019; McGarigal & Marks, 1995; McRae & Beier, 2007) with empirical genetic and behavioral data from population-level sampling of chimpanzees (e.g., genetic differentiation F_{ST} , G_{ST} and cultural F_{ST} , Bell et al., 2009). Connecting these concepts would also facilitate a predictive framework whereby the genetic, behavioral, and ecological characteristics of populations in poorly known geographic regions could be estimated, before validation with new empirical data as it becomes available.

Beyond correlative approaches such as those described above, mechanistic approaches would enable a deeper exploration of biogeographical patterns and processes that have affected chimpanzees, especially with the recent availability of comprehensive behavioral (Kühl et al., 2019) and molecular data (Lester et al., 2021) for a large number of wild chimpanzee populations. Rapid developments in the generation and analysis of genome-wide molecular data over the past decade have revealed detailed demographic histories, enabling the identification of diversification mechanisms due to forest refugia, which are characterized by divergence, isolation, and secondary contact as refugial habitats fragment and reconnect with each other during glacial cycles (Barratt et al., 2018; Charles et al., 2018; Feng et al., in press; Leaché et al., 2019; Portik et al., 2017). The ability to distinguish signals of forest refugia from other diversification mechanisms such as landscape barriers, ecological gradients, and

anthropogenic habitat fragmentation, would represent a powerful approach for gaining a more mechanistic understanding of population diversification.

5 | CONCLUSIONS

Deeper insights into historical climate change in highly diverse tropical regions are essential to understand their contribution towards shaping current biodiversity patterns, and how biodiversity loss might be predicted given future projections of anthropogenic and climate change. By increasing the spatial resolution and number of time periods used to project SDMs, the data set we present here is able to improve on existing paleoclimate data that are temporally limited to build fine-scale models of changing habitat suitability for species through time accounting for their dispersal ability. Integrating this data set with other data types in the future (e.g., ecological, behavioral, and molecular) will help to increase our general understanding of how climate change impacts biodiversity, and how we may mitigate against predicted biodiversity loss in the future.

ACKNOWLEDGMENTS

We are indebted to several organizations including the Rwanda Development Board, Rwanda, Agence Nationale des Parcs Nationaux, Gabon, Instituto da Biodiversidade e das Áreas Protegidas (IBAP), Guinea-Bissau, Ministère de l'Enseignement Supérieur et de la Recherche Scientifique and the Office Ivoirien des Parcs et Réserves of Côte d'Ivoire, Ministère des Forêts et de La Faune, Cameroon, Institut Congolais pour la Conservation de la Nature (ICCN), Democratic Republic of the Congo, Ministère de la Recherche Scientifique, Democratic Republic of the Congo, Ministry of Agriculture, Forestry and Food Security, Sierra Leone, Forestry Development Authority of Liberia, Liberia and the Wildlife Conservation Society (WCS). We would also like to acknowledge numerous individuals for valuable input to this project: Ekwoke E. Abwe, Samuel Angedakin, Floris Aubert, Emmanuel Ayuk Ayimisin, Nsengiyumva Barakabuye, Donatienne Barubiyo, Barca Benjamin, Richard Bergl, Anna Binczik, Hedwige Boesch, Matthieu Bonnet, Terry Brncic, Damien Caillaud, Kenneth Cameron, Genevieve Campbell, Chloe Cipoletta, Katherine Corogenes, Charlotte Coupland, Pauwel De Wachter, Karsten Dierks, Emmanuel Dilambaka, Dervla Dowd, Andrew Dunn, Villard Ebot Egbe, Atanga Ekobo, J. Michael Fay, Joel Gamys, Jessica Ganas, Nicolas Granier, Liz Greengrass, John Hart, David Hebditch of Hummingbird Resources, Cleve Hicks, Annika Hillers, Inaoyom Imong, Kathryn J. Jeffery, Mbangi Kambere, W. Daniel Kissling, Noelle Kumpel, Deo Kujirakwinja, Vincent Lapeyre, Bradley Larson, Stephanie Latour, Vera Leinert, Paul Marchesi, Giovanna Maretti, Sergio Marrocoli, Rumen Martín, Amelia Meier, Felix Mulindahabi, Mizuki Murai, Stuart Nixon, Protails Niyigaba, Louis Nkembi, Emmanuelle Normand, Nicolas Ntare, Leonidas Nzigiyimpa, Robinson Orume, Leon Payne, Charles Petre, Kathryn Phillips, Jodie Preece, Frank Princee, Sebastien Regnaut, Alexis Kalinda Salumu, Emma Stokes,

Alexander Tickle, Clement Tweh, Jeremy VanDerWal, Virginie Vergnes, Magloire Kambale Vyalengerera, Ymke Warren, Klaus Zuberbühler. CDB, REO, HSK further acknowledge the support of the German Centre for Integrative Biodiversity Research (iDiv) Halle-Jena-Leipzig funded by the Deutsche Forschungsgemeinschaft (DFG, German Research Foundation)—FZT 118. This project has been partially conducted in the framework of the iDiv-Flexpool—the internal funding mechanism of iDiv. The scientific results have been computed at the High-Performance Computing (HPC) Cluster EVE, a joint effort of both the Helmholtz Centre for Environmental Research - UFZ (<http://www.ufz.de/>) and the German Centre for Integrative Biodiversity Research (iDiv) Halle-Jena-Leipzig (<http://www.idiv.de/>). Open Access funding enabled and organized by Projekt DEAL.

CONFLICT OF INTERESTS

All the authors declare that there are no conflicts of interests.

AUTHOR CONTRIBUTIONS

Christopher D. Barratt conceived of the study and designed the analyses with Mimi Arandjelovic, Hjalmar Kühl, Christophe Boesch, Renske E. Onstein, Jack D. Lester, and Paolo Gratton. Christopher D. Barratt gathered the data, aided by Tenekwetche Sop. Christopher D. Barratt analyzed the data and wrote the first draft of the manuscript with Jack D. Lester, Paolo Gratton, Renske E. Onstein, Ammie K. Kalan, Maureen S. McCarthy, Gaëlle Bocksberger, Lauren C. White, Linda Vigilant, and Paula Dieguez. Subsequent drafts of the manuscript included contributions from all authors. All authors contributed data to this study.

DATA AVAILABILITY STATEMENT

We provide our scripts and data for reproducibility as a DRYAD package (<https://doi.org/10.5061/dryad.bk3j9kdcj>). The package contains the raw data along with scripts to perform analyses, build and run the models, and plot the results. The full climate data set is available from Jeremy Vanderwal (see Bell et al., 2017). The full distribution data for chimpanzees used in the analyses are available on request from the IUCN SSC A.P.E.S. database manage (<http://apes.eva.mpg.de/>).

ORCID

Christopher D. Barratt  <https://orcid.org/0000-0003-3267-8855>
 Renske E. Onstein  <https://orcid.org/0000-0002-2295-3510>
 Andrew J. Plumptre  <http://orcid.org/0000-0002-9333-4047>
 Erin G. Wessling  <https://orcid.org/0000-0001-9661-4354>
 Christophe Boesch  <http://orcid.org/0000-0001-9538-7858>
 Mimi Arandjelovic  <http://orcid.org/0000-0001-8920-9684>
 Hjalmar Kühl  <http://orcid.org/0000-0002-4440-9161>

REFERENCES

Aleman, J. C., Jarzyna, M. A., & Staver, A. C. (2018). Forest extent and deforestation in tropical Africa since 1900. *Nature Ecology and Evolution*, 2, 26–33.

- Allouche, O., Tsoar, A., & Kadmon, R. (2006). Assessing the accuracy of species distribution models: Prevalence, kappa and the true skill statistic (TSS). *Journal of Applied Ecology*, 43, 1223–1232.
- Anthony, N. M., Atteke, C., Bruford, M. W., Dallmeier, F., Freedman, A. H., Hardy, O. J., Ibrahim, B., Jeffery, K. J., Johnson, M., Lahm, S. A., Lepengue, N., Lowenstein, J. H., Maisels, F., Mboumba, J.-F., Mickala, P., Morgan, K., Ntie, S., Smith, T. B., Sullivan, J. P., & Gonder, M. K. (2014). Evolution and conservation of Central African biodiversity: Priorities for future research and education in the Congo Basin and Gulf of Guinea. *Biotropica*, 47, 1–12.
- Araújo, M. B., Anderson, R. P., Márcia Barbosa, A., Beale, C. M., Dormann, C. F., Early, R., Garcia, R. A., Guisan, A., Maiorano, L., Naimi, B., O'Hara, R. B., Zimmerman, N. E., & Rahbek, C. (2019). Standards for distribution models in biodiversity assessments. *Science Advances*, 5, eaat4858.
- Araújo, M. B., & New, M. (2007). Ensemble forecasting of species distributions. *Trends in Ecology and Evolution*, 22, 42–47.
- Barratt, C. D., Bwong, B. A., Jehle, R., Liedtke, H. C., Nagel, P., Onstein, R. E., Portik, D. M., Streicher, J. W., & Loader, S. P. (2018). Vanishing refuge? Testing the forest refuge hypothesis in coastal East Africa using genome-wide sequence data for seven amphibians. *Molecular Ecology*, 27, 4289–4308.
- Barratt, C. D., Bwong, B. A., Onstein, R. E., Rosauer, D. F., Menegon, M., Daggart, N., Nagel, P., Kissling, W. D., & Loader, S. P. (2017). Environmental correlates of phylogenetic endemism in amphibians and the conservation of refugia in the Coastal Forests of Eastern Africa. *Diversity and Distributions*, 23, 875–887.
- Basabose, A. K. (2002). Diet composition of chimpanzees inhabiting the montane forest of Kahuzi, Democratic Republic of Congo. *American Journal of Primatology*, 58, 1–21.
- Bell, A. V., Richerson, P. J., & McElreath, R. (2009). Culture rather than genes provides greater scope for the evolution of large-scale human prosociality. *Proceedings of the National Academy of Sciences of the United States of America*, 106, 17671–17674.
- Bell, R. C., Parra, J. L., Badjedjea, G., Barej, M. F., Blackburn, D. C., Burger, M., Channing, A., Dehling, J. M., Greenbaum, E., Gvoždík, V., Kielgast, J., Kusamba, C., Lötters, S., McLaughlin, P. J., Nagy, Z. T., Rödel, M. O., Portik, D. M., Stuart, B. L., VanDerWal, J., & Zamudio, K. R. (2017). Idiosyncratic responses to climate-driven forest fragmentation and marine incursions in reed frogs from Central Africa and the Gulf of Guinea Islands. *Molecular Ecology*, 26, 5223–5244.
- Bennett, E. L., Blencowe, E., Brandon, K., Brown, D., Burn, R. W., Cowlshaw, G., Davies, G., Dublin, H., Fa, J. E., Milner-Gulland, E. J., Robinson, J. G., Rowcliffe, J. M., Underwood, F. M., & Wilkie, D. S. (2007). Hunting for consensus: Reconciling bushmeat harvest, conservation, and development policy in West and Central Africa. *Conservation Biology*, 2, 1884–1887.
- Blach-Overgaaard, A., Kissling, W. D., Dransfield, J., Balslev, H., & Svenning, J.-C. (2013). Multimillion-year climatic effects on palm species diversity in Africa. *Ecology*, 94, 2426–2435.
- Boesch, C., Kalan, A. K., Agbor, A., Arandjelovic, M., Diegues, P., Lapeyre, V., & Kühl, H. S. (2017). Chimpanzees routinely fish for algae with tools during the dry season in Bakoun, Guinea. *American Journal of Primatology*, 79, 1–7.
- Bohoussou, K. H., Cornette, R., Akpatou, B., Colyn, M., Kerbis Peterhans, J., Kennis, J., Šumbera, R., Verheyen, E., N'Goran, E., Katuala, P., & Nicolas, V. (2015). The phylogeography of the rodent genus *Malacomys* suggests multiple Afrotropical Pleistocene lowland forest refugia. *Journal of Biogeography*, 42, 2049–2061.
- Bryja, J., Mikula, O., Patzenhauerová, H., Ouge, N. O., Šumbera, R., & Verheyen, E. (2014). The role of dispersal and vicariance in the Pleistocene history of an East African mountain rodent, *Praomys delectorum*. *Journal of Biogeography*, 41, 196–208.
- Bryja, J., Mikula, O., Šumbera, R., Meheretu, Y., Aghová, T., Lavrenchenko, L. A., Mazoch, V., Ouge, N., Mbau, J. S., Welegerima, K., Amundala, N., Colyn, M., Leirs, H., & Verheyen, E. (2014). Pan-African phylogeny of *Mus* (subgenus *Nannomys*) reveals one of the most successful mammal radiations in Africa. *BMC Evolutionary Biology*, 14, 256.
- Bryja, J., Šumbera, R., Kerbis Peterhans, J. C., Aghová, T., Bryjová, A., Mikula, O., Nicolas, V., Denys, C., & Verheyen, E. (2017). Evolutionary history of the thicket rats (genus *Grammomys*) mirrors the evolution of African forests since late Miocene. *Journal of Biogeography*, 44, 182–194.
- Charles, K. L., Bell, R. C., Blackburn, D. C., Burger, M., Fujita, M. K., Gvoždík, V., Jongsma, G. F. M., Kouete, M. T., Leaché, A. D., & Portik, D. M. (2018). Sky, sea, and forest islands: Diversification in the African leaf-folding frog *Afraxalus paradorsalis* (Anura: Hyperoliidae) of the lower Guineo-Congolian rain forest. *Journal of Biogeography*, 45, 1781–1794.
- Clifford, S. L., Anthony, N. M., Bawe-Johnson, M., Abernethy, K. A., Tutin, C. E. G., White, L. J. T., Bermejo, M., Goldsmith, M. L., McFarland, K., Jeffery, K. J., Bruford, M. W., & Wickings, E. J. (2004). Mitochondrial DNA phylogeography of western lowland gorillas (*Gorilla gorilla gorilla*). *Molecular Ecology*, 13, 1551–1565.
- Davis, E. B., McGuire, J. L., & Orcutt, J. D. (2014). Ecological niche models of mammalian glacial refugia show consistent bias. *Ecography*, 37, 1133–1138.
- Davis, M. B., & Shaw, R. G. (2001). Range shifts and adaptive responses to quaternary climate change. *Science*, 292, 673–679.
- Demenocal, P. B. (1995). Plio-pleistocene African climate. *Science*, 270, 53–59.
- Dickson, B. G., Albano, C. M., Anantharaman, R., Beier, P., Fargione, J., Graves, T. A., Gray, M. E., Hall, K. R., Lawler, J. J., Leonard, P. B., Littlefield, C. E., McClure, M. L., Novembre, J., Schloss, C. A., Schumaker, N. H., Shah, V. B., & Theobald, D. M. (2019). Circuit-theory applications to connectivity science and conservation. *Conservation Biology*, 33, 239–249.
- Ellegren, H., & Galtier, N. (2016). Determinants of genetic diversity. *Nature Reviews Genetics*, 17, 422–433.
- Faye, A., Deblauwe, V., Mariac, C., Richard, D., Sonké, B., Vigouroux, Y., & Couvreur, T. L. P. (2016). Phylogeography of the genus *Podococcus* (Palmae/Arecaceae) in Central African rain forests: Climate stability predicts unique genetic diversity. *Molecular Phylogenetics and Evolution*, 105, 126–138.
- Feng, L., Ruhsam, M., Wang, Y.-H., Li, Z.-H., & Wang, X.-M. (in press). Using demographic model selection to untangle allopatric divergence and diversification mechanisms in the *Rheum palmatum* complex in the Eastern Asiatic Region. *Molecular Ecology*.
- Fielding, A. H., & Bell, J. F. (1997). A review of methods for the assessment of prediction errors in conservation presence/absence models. *Environmental Conservation*, 24, 38–49.
- Fjeldsa, J., & Lovett, J. C. (1997). Biodiversity and environmental stability. *Biodiversity and Conservation*, 6, 315–323.
- Forester, B. R., Dechaine, E. G., & Bunn, A. G. (2013). Integrating ensemble species distribution modelling and statistical phylogeography to inform projections of climate change impacts on species distributions. *Diversity and Distributions*, 19, 1480–1495.
- Fünfstück, T., Arandjelovic, M., Morgan, D. B., Sanz, C., Reed, P., Olson, S. H., Cameron, K., Ondzie, A., Peeters, M., & Vigilant, L. (2015). The sampling scheme matters: *Pan troglodytes troglodytes* and *P. t. schweinfurthii* are characterized by clinal genetic variation rather than a strong subspecies break. *American Journal of Physical Anthropology*, 156, 181–191.
- Galat-Luong, A., Galat, G., & Nizinski, G. (2009). Une conséquence du réchauffement climatique: Les chimpanzés filtrent leur eau de boisson. *Geographia Technica No Spécial*, 199–204.

- Gaubert, P., Njiokou, F., Ngua, G., Afiademanyo, K., Dufour, S., Malekani, J., Bi, S. G., Tougard, C., Olayemi, A., Danquah, E., Djagoun, C. A. M. S., Kaleme, P., Mololo, C. N., Stanley, W., Luo, S. J., & Antunes, A. (2016). Phylogeography of the heavily poached African common pangolin (*Pholidota*, *Manis tricuspis*) reveals six cryptic lineages as traceable signatures of Pleistocene diversification. *Molecular Ecology*, 25, 5975–5993.
- Gonder, M. K., Locatelli, S., Ghobrial, L., Mitchell, M. W., Kujawski, J. T., Lankester, F. J., Stewart, C. B., & Tishkoff, S. A. (2011). Evidence from Cameroon reveals differences in the genetic structure and histories of chimpanzee populations. *Proceedings of the National Academy of Sciences of the United States of America*, 108, 4766–4771.
- Graham, C. H., VanDerWal, J., Phillips, S. J., Moritz, C., & Williams, S. E. (2010). Dynamic refugia and species persistence: Tracking spatial shifts in habitat through time. *Ecography*, 33, 1062–1069.
- Hardy, O. J., Born, C., Budde, K., Daïnou, K., Dauby, G., Duminil, J. Ö., Ewédjé, E. E. B. K., Gomez, C., Heuertz, M., Koffi, G. K., Lowe, A. J., Micheneau, C., Ndiade-Bouroubou, D., Piñeiro, R., & Poncet, V. (2013). Comparative phylogeography of African rain forest trees: A review of genetic signatures of vegetation history in the Guineo-Congolian region. *Comptes Rendus - Geoscience*, 345, 284–296.
- Heinicke, S., Mundry, R., Boesch, C., Amarasekaran, B., Barrie, A., Brncic, T., Brugiere, D., Campbell, G., Carvalho, J., Danquah, E., Dowd, D., Eshuis, H., Fleury-Brugiere, M. C., Gamys, J., Ganas, J., Gatti, S., Ginn, L., Goedmakers, A., Granier, N., & Kühl, H. S. (2019). Advancing conservation planning for western chimpanzees using IUCN SSC A.P.E.S.: The case of a taxon-specific database. *Environmental Research Letters*, 14, 064001.
- Herbinger, I., Boesch, C., & Rothe, H. (2001). Territory characteristics among three neighboring chimpanzee communities in the Taï National Park, Côte d'Ivoire. *International Journal of Primatology*, 22, 143–167.
- Hewitt, G. (2000). The genetic legacy of the quaternary ice ages. *Nature*, 405, 907–913.
- Hewitt, G. M. (2004). Genetic consequences of climatic oscillations in the Quaternary. *Philosophical Transactions of the Royal Society, B: Biological Sciences*, 359, 183–195.
- Hijmans, R. J., Cameron, S. E., Parra, J. L., Jones, P. G., & Jarvis, A. (2005). Very high resolution interpolated climate surfaces for global land areas. *International Journal of Climatology*, 25, 1965–1978.
- Hijmans, R. J., van Etten, J., Mattiuzzi, M., Sumner, M., Greenberg, J. A., Lamigueiro, O. P., Bevan, A., Racine, E. B., & Shortridge, A. (2011). Raster: raster: Geographic data analysis and modeling. *R Package Version*, 3, 1–5.
- Hugall, A., Moritz, C., Moussalli, A., & Stanisic, J. (2002). Reconciling paleodistribution models and comparative phylogeography in the Wet Tropics rainforest land snail *Gnarosiphia bellendenkerensis* (Brazier 1875). *Proceedings of the National Academy of Sciences of the United States of America*, 99, 6112–6117.
- Humble, T., Maisels, F., Oates, J. F., Plumtre, A., & Williamson, E. A. (2016). Pan troglodytes (errata version published in 2018). *The IUCN Red List of Threatened Species*, 2016, e.T15933A129038584. <https://doi.org/10.2305/IUCN.UK.2016-2.RLTS.T15933A129038584.en>
- Hunt, K. D., & McGrew, W. C. (2002). Chimpanzees in the dry habitats of Assirik, Senegal and Semliki Wildlife Reserve, Uganda. In C. Boesch, G. Hohmann, & L. F. Marchant (Eds.), *Behavioural Diversity in Chimpanzees and Bonobos* (pp. 35–51). Cambridge University Press.
- IPCC. (2014). *Climate Change 2014: Synthesis Report. Contribution of Working Groups I, II and III to the Fifth Assessment Report of the Intergovernmental Panel on Climate Change*. Core Writing Team, R.K. Pachauri and L.A. Meyer (eds.), pp. 151. IPCC, Geneva, Switzerland.
- IPCC. (2007). *Climate Change 2007: The Physical Science Basis. Contribution of Working Group I to the Fourth Assessment Report of the Intergovernmental Panel on Climate Change* (Solomon, S., Qin, D., Manning, M., Chen, Z., Marquis, M., Averyt, K. B., Tignor, M. & Miller, H. L., (eds.)) UK and New York, NY, USA: Cambridge University Press, Cambridge.
- Jantz, S. M., Pintea, L., Nackoney, J., & Hansen, M. C. (2016). Landsat ETM+ and SRTM data provide near real-time monitoring of Chimpanzee (*Pan troglodytes*) habitats in Africa. *Remote Sensing*, 8, 427.
- Junker, J., Blake, S., Boesch, C., Campbell, G., Toit, L., du, Duvall, C., Ekobo, A., Etoga, G., Galat-Luong, A., Gamys, J., Ganas-Swaray, J., Gatti, S., Ghiurghi, A., Granier, N., Hart, J., Head, J., Herbinger, I., Hicks, T. C., Huijbregts, B., & Kuehl, H. S. (2012). Recent decline in suitable environmental conditions for African great apes. *Diversity and Distributions*, 18, 1077–1091.
- Kingdon, J. (1990). *Island Africa the evolution of Africa's rare animals and plants*. Collins.
- Kissling, W. D., Rahbek, C., & Böhning-Gaese, K. (2007). Food plant diversity as broad-scale determinant of avian frugivore richness. *Proceedings of the Royal Society of London B: Biological Sciences*, 274, 799–808.
- Klein Goldewijk, K., Beusen, A., Van Drecht, G., & De Vos, M. (2011). The HYDE 3.1 spatially explicit database of human-induced global land-use change over the past 12,000 years. *Global Ecology and Biogeography*, 20, 73–86.
- Kuhlwilm, M., Han, S., Sousa, V. C., Excoffier, L., & Marques-Bonet, T. (2019). Ancient admixture from an extinct ape lineage into bonobos. *Nature Ecology and Evolution*, 3, 957–965.
- Kühl, H. S., Boesch, C., Kulik, L., Haas, F., Arandjelovic, M., Dieguez, P., Bocksberger, G., McElreath, M. B., Agbor, A., Angedakin, S., Ayimisin, E. A., Bailey, E., Barubiyo, D., Bessone, M., Brazzola, G., Chancellor, R., Cohen, H., Coupland, C., Danquah, E., & Kalan, A. K. (2019). Human impact erodes chimpanzee behavioral diversity. *Science*, 363, 1453–1455.
- Kühl, H. S., Kalan, A. K., Arandjelovic, M., Aubert, F., D'Auvergne, L., Goedmakers, A., Jones, S., Kehoe, L., Regnaut, S., Tickle, A., Ton, E., Van Schijndel, J., Abwe, E. E., Angedakin, S., Agbor, A., Ayimisin, E. A., Bailey, E., Bessone, M., Bonnet, M., & Boesch, C. (2016). Chimpanzee accumulative stone throwing. *Scientific Reports*, 6, 22219.
- Langergraber, K. E., Watts, D. P., Vigilant, L., Mitani, J. C., & Cheney, D. L. (2017). Group augmentation, collective action, and territorial boundary patrols by male chimpanzees. *Proceedings of the National Academy of Sciences of the United States of America*, 114, 7337–7342.
- Leaché, A. D., Portik, D. M., Rivera, D., Rödel, M. O., Penner, J., Gvoždík, V., Greenbaum, E., Jongsma, G. F. M., Ofori-Boateng, C., Burger, M., Eniang, E. A., Bell, R. C., & Fujita, M. K. (2019). Exploring rain forest diversification using demographic model testing in the African foam-nest treefrog *Chiromantis rufescens*. *Journal of Biogeography*, 46, 2706–2721.
- Leal, M. E. (2004). *The African rain forest during the last glacial maximum. An archipelago of forests in a sea of grass* (PhD thesis). NHN-Wageningen, Biosystematics Group, Department of Plant Sciences.
- Leroy, E. M., Rouquet, P., Formenty, P., Souquière, S., Kilbourne, A., Froment, J. M., & Rollin, P. E. (2004). Multiple Ebola virus transmission events and rapid decline of central African wildlife. *Science*, 303, 387–390.
- Lester, J. D., Vigilant, L., Gratton, P., McCarthy, M. S., Barratt, C. D., Dieguez, P., Agbor, A., Álvarez-Varona, P., Angedakin, S., Ayimisin, E. A., Bailey, E., Bessone, M., Brazzola, G., Chancellor, R., Cohen, H., Danquah, E., Deschner, T., Egbe, V. E., Eno-Nku, M., ... Arandjelovic, M. (2021). Recent genetic connectivity and clinal variation in chimpanzees. *Nature Communications Biology*, 4, 1–11.
- Lowe, A. J., Harris, D., Dormontt, E., & Dawson, I. K. (2010). Testing putative African tropical forest refugia using chloroplast and nuclear DNA phylogeography. *Tropical Plant Biology*, 3, 50–58.
- Maguire, K. C., Nieto-Lugilde, D., Blois, J. L., Fitzpatrick, M. C., Williams, J. W., Ferrier, S., & Lorenz, D. J. (2016). Controlled

- comparison of species- and community-level models across novel climates and communities. *Proceedings of the Royal Society B: Biological Sciences*, 283, 20152817.
- Maley, J. (1996). The African rain forest - Main characteristics of changes in vegetation and climate from the Upper Cretaceous to the Quaternary. *Proceedings of the Royal Society of Edinburgh Section B: Biological Sciences*, 104B, 31–73.
- De Manuel, M., Kuhlwillm, M., Frandsen, P., Sousa, V. C., Desai, T., Prado-Martinez, J., Hernandez-Rodriguez, J., Dupanloup, I., Lao, O., Hallast, P., Schmidt, J. M., Heredia-Genestar, J. M., Benazzo, A., Barbujani, G., Peter, B. M., Kuderna, L. F. K., Casals, F., Angedakin, S., Arandjelovic, M., & Marques-Bonet, T. (2016). Chimpanzee genomic diversity reveals ancient admixture with bonobos. *Science*, 354, 477–481.
- Maslin, M. A., Brierley, C. M., Milner, A. M., Shultz, S., Trauth, M. H., & Wilson, K. E. (2014). East african climate pulses and early human evolution. *Quaternary Science Reviews*, 101, 1–17.
- Mayr, E., & O'Hara, R. J. (1986). The biogeographic evidence supporting the Pleistocene forest refuge hypothesis. *Evolution*, 40, 55–67.
- McBrearty, S., & Jablonski, N. G. (2005). First fossil chimpanzee. *Nature*, 437, 105–108.
- McGarigal, K., & Marks, B. J. (1995). FRAGSTATS: spatial pattern analysis program for quantifying landscape structure. *General Technical Report - US Department of Agriculture, Forest Service*. <https://doi.org/10.2737/PNW-GTR-351>
- McGrew, W. C., Baldwin, P. J., & Tutin, C. E. G. (1988). Diet of wild chimpanzees (*Pan troglodytes verus*) at Mt. Assirik, Senegal: I. Composition. *American Journal of Primatology* (16, pp. 213–226).
- McRae, B. H., & Beier, P. (2007). Circuit theory predicts gene flow in plant and animal populations. *Proceedings of the National Academy of Sciences of the United States of America*, 104, 19885–19890.
- Merow, C., Smith, M. J., Edwards, T. C., Guisan, A., McMahon, S. M., Normand, S., Thuiller, W., Wüest, R. O., Zimmermann, N. E., & Elith, J. (2014). What do we gain from simplicity versus complexity in species distribution models? *Ecography*, 37, 1267–1281.
- Merow, C., Smith, M. J., & Silander, J. A. (2013). A practical guide to MaxEnt for modeling species' distributions: What it does, and why inputs and settings matter. *Ecography*, 36, 1058–1069.
- Mitchell, M. W., Locatelli, S., Ghobrial, L., Pokempner, A. A., Clee, P. R. S., Abwe, E. E., Nicholas, A., Nkambi, L., Anthony, N. M., Morgan, B. J., Fotso, R., Peeters, M., Hahn, B. H., & Gonder, M. K. (2015). The population genetics of wild chimpanzees in Cameroon and Nigeria suggests a positive role for selection in the evolution of chimpanzee subspecies. *BMC Evolutionary Biology*, 15, 3.
- Mizerovská, D., Nicolas, V., Demos, T. C., Akaibe, D., Colyn, M., Denys, C., Kaleme, P. K., Katuala, P., Kennis, J., Kerbis Peterhans, J. C., Laudisoit, A., Missoup, A. D., Šumbera, R., Verheyen, E., & Bryja, J. (2019). Genetic variation of the most abundant forest-dwelling rodents in Central Africa (*Praomys jacksoni* complex): Evidence for Pleistocene refugia in both montane and lowland forests. *Journal of Biogeography*, 46, 1466–1478.
- Myers, N., Mittermeier, R. A., Mittermeier, C. G., Fonseca, G. A. B., & Kent, J. (2000). Biodiversity hotspots for conservation priorities. *Nature*, 403, 853–858.
- Naimi, B., & Araújo, M. B. (2016). Sdm: A reproducible and extensible R platform for species distribution modelling. *Ecography*, 39, 368–375.
- Nicolas, V., Missoup, A. D., Denys, C., Kerbis Peterhans, J., Katuala, P., Couloux, A., & Colyn, M. (2011). The roles of rivers and Pleistocene refugia in shaping genetic diversity in *Praomys misonnei* in tropical Africa. *Journal of Biogeography*, 38, 191–207.
- Nishida, T., & Uehara, S. (1983). Natural diet of chimpanzees (*Pan troglodytes schweinfurthii*): Long-term record from the Mahale Mountains, Tanzania. *African Study Monographs*, 3, 109–130.
- Onstein, R. E., Vink, D. N., Veen, J., Barratt, C. D., Flantua, S. G. A., Wich, S. A., & Kissling, W. D. (2020). Palm fruit colours are linked to the broad-scale distribution and diversification of primate colour vision systems. *Proceedings of the Royal Society of London B: Biological Sciences*, 287, 20192731.
- Piñeiro, R., Dauby, G., Kaymak, E., & Hardy, O. J. (2017). Pleistocene population expansions of shade-tolerant trees indicate fragmentation of the African rainforest during the ice ages. *Proceedings of the Royal Society B: Biological Sciences*, 284, 284.
- Piñeiro, R., Hardy, O. J., Tovar, C., Gopalakrishnan, S., Vieira, F. G., & Gilbert, M. T. P. (2019). Contrasting dates of rainforest fragmentation in Africa inferred from trees with different dispersal abilities. *BiorXiv*. <https://doi.org/10.1101/811463>
- Portik, D. M., Leaché, A. D., Rivera, D., Barej, M. F., Burger, M., Hirschfeld, M., Rödel, M. O., Blackburn, D. C., & Fujita, M. K. (2017). Evaluating mechanisms of diversification in a Guineo-Congolian tropical forest frog using demographic model selection. *Molecular Ecology*, 19, 5245–5263.
- Pozzi, L. (2016). The role of forest expansion and contraction in species diversification among galagos (Primates: Galagidae). *Journal of Biogeography*, 43, 1930–1941.
- Prado-Martinez, J., Sudmant, P. H., Kidd, J. M., Li, H., Kelley, J. L., Lorente-Galdos, B., Veeramah, K. R., Woerner, A. E., O'Connor, T. D., Santpere, G., Cagan, A., Theunert, C., Casals, F., Laayouni, H., Munch, K., Hobolth, A., Halager, A. E., Malig, M., Hernandez-Rodriguez, J., & Marques-Bonet, T. (2013). Great ape genetic diversity and population history. *Nature*, 499, 471–475.
- Pruetz, J., & Bertolani, P. (2009). Chimpanzee (*Pan troglodytes verus*) behavioral responses to stresses associated with living in a savannah-mosaic environment: Implications for hominin adaptations to open habitats. *PaleoAnthropology*, 2009, 252–262.
- R Core Team. (2019). *R: A language and environment for statistical computing*. Version 3.5.2. Vienna, Austria: R Foundation for Statistical Computing.
- Rosauer, D. F., Catullo, R. A., Vanderwal, J., & Moussalli, A. (2015). Lineage range estimation method reveals fine-scale endemism linked to Pleistocene stability in Australian rainforest herpetofauna. *PLoS One*, 10, e0126274.
- Sandel, B., Arge, L., Dalsgaard, B., Davies, R. G., Gaston, K. J., Sutherland, W. J., & Svenning, J.-C. (2011). The influence of late quaternary climate-change velocity on species endemism. *Science*, 334, 660–664.
- Schmidt, J. M., De Manuel, M., Marques-Bonet, T., Castellano, S., & Andrés, A. M. (2019). The impact of genetic adaptation on chimpanzee subspecies differentiation. *PLoS Genetics*, 15, e1008485.
- Sepulchre, P., Ramstein, G., Fluteau, F., Schuster, M., Tiercelin, J. -J., & Brunet, M. (2006). Tectonic uplift and Eastern Africa aridification. *Science*, 313, 1419–1423.
- Sesink Clee, P. R., Abwe, E. E., Ambahe, R. D., Anthony, N. M., Fotso, R., Locatelli, S., Maisels, F., Mitchell, M. W., Morgan, B. J., Pokempner, A. A., & Gonder, M. K. (2015). Chimpanzee population structure in Cameroon and Nigeria is associated with habitat variation that may be lost under climate change. *BMC Evolutionary Biology*, 15, 2.
- Singarayer, J. S., & Valdes, P. J. (2010). High-latitude climate sensitivity to ice-sheet forcing over the last 120 kyr. *Quaternary Science Reviews*, 29, 43–55.
- Strindberg, S., Maisels, F., Williamson, E. A., Blake, S., Stokes, E. J., Aba'a, R., Abitsi, G., Agbor, A., Ambahe, R. D., Bakabana, P. C., Bechem, M., Berlemont, A., De Semboli, B. B., Boundja, P. R., Bout, N., Breuer, T., Campbell, G., De Wachter, P., Akou, M. E., & Wilkie, D. S. (2018). Guns, germs, and trees determine density and distribution of gorillas and chimpanzees in Western Equatorial Africa. *Science Advances*, 4, eaar2964.
- Svenning, J.-C., Eiserhardt, W. L., Normand, S., Ordonez, A., & Sandel, B. (2015). The influence of paleoclimate on present-day patterns in

- biodiversity and ecosystems. *Annual Review of Ecology, Evolution, and Systematics*, 45, 551–572.
- Telfer, P. T., Souquière, S., Clifford, S. L., Abernethy, K. A., Bruford, M. W., Disotell, T. R., Sterner, K. N., Roques, P., Marx, P. A., & Wickings, E. J. (2003). Molecular evidence for deep phylogenetic divergence in *Mandrillus sphinx*. *Molecular Ecology*, 12, 2019–2024.
- Trauth, M. H., Maslin, M. A., Deino, A., & Strecker, M. R. (2005). Late Cenozoic moisture history of East Africa. *Science*, 309, 2051–2053.
- VanDerWal, J., Shoo, L. P., Graham, C., & Williams, S. E. (2009). Selecting pseudo-absence data for presence-only distribution modeling: How far should you stray from what you know? *Ecological Modelling*, 220, 589–594.
- Veloz, S. D., Williams, J. W., Blois, J. L., He, F., Otto-Bliesner, B., & Liu, Z. (2012). No-analog climates and shifting realized niches during the late quaternary: implications for 21st-century predictions by species distribution models. *Global Change Biology*, 18, 1698–1713.
- Waltari, E., & Guralnick, R. P. (2009). Ecological niche modelling of montane mammals in the Great Basin, North America: examining past and present connectivity of species across basins and ranges. *Journal of Biogeography*, 36, 148–161.
- Wei, T., & Simko, V. (2017). *R package "corrplot": Visualization of a correlation matrix* (Version 0.84). Available from <https://github.com/taiyun/corrplot>
- Wessling, E. G., Deschner, T., Mundry, R., Pruetz, J. D., Wittig, R. M., & Kühl, H. S. (2018). Seasonal variation in physiology challenges the notion of Chimpanzees (*Pan troglodytes verus*) as a forest-adapted species. *Frontiers in Ecology and Evolution*, 6, 60.
- Whiten, A., Goodall, J., McGrew, W. C., Nishida, T., Reynolds, V., Sugiyama, Y., Tutin, C. E. G., Wrangham, R. W., & Boesch, C. (1999). Cultures in chimpanzees. *Nature*, 399, 682–685.
- Wrangham, R. W. (1977). Feeding behaviour of chimpanzees in Gombe National Park, Tanzania, *Primate ecology: Studies of feeding and ranging behavior in lemurs, monkey and apes* (pp. 503–538). Elsevier.

SUPPORTING INFORMATION

Additional Supporting Information may be found online in the supporting information tab for this article.

How to cite this article: Barratt, C. D., Lester, J. D., Gratton, P., Onstein, R. E., Kalan, A. K., McCarthy, M. S., Bocksberger, G., White, L. C., Vigilant, L., Diegues, P., Abdulai, B., Aebischer, T., Agbor, A., Assumang, A. K., Bailey, E., Bessone, M., Buys, B., Carvalho, J. S., Chancellor, R., ... Kühl, H. (2021). Quantitative estimates of glacial refugia for chimpanzees (*Pan troglodytes*) since the last interglacial (120,000 BP). *Am J Primatol*, 83, e23320. <https://doi.org/10.1002/ajp.23320>