

# Elongation of very Long-Chain ( $>C_{24}$ ) Fatty Acids in *Clarias gariepinus*: Cloning, Functional Characterization and Tissue Expression of *elovl4* Elongases

Angela Oboh<sup>1,2</sup> · Juan C. Navarro<sup>3</sup> · Douglas R. Tocher<sup>1</sup> · Oscar Monroig<sup>1</sup>

Received: 28 March 2017 / Accepted: 15 August 2017 / Published online: 30 August 2017  
© The Author(s) 2017. This article is an open access publication

**Abstract** Elongation of very long-chain fatty acid 4 (Elovl4) proteins participate in the biosynthesis of very long-chain ( $>C_{24}$ ) saturated and polyunsaturated fatty acids (FA). Previous studies have shown that fish possess two different forms of Elovl4, termed Elovl4a and Elovl4b. The present study aimed to characterize both molecularly and functionally two *elovl4* cDNA from the African catfish *Clarias gariepinus*. The results confirmed that *C. gariepinus* possessed two *elovl4*-like elongases with high homology to two previously characterized Elovl4 from *Danio rerio*, and thus they were termed accordingly as Elovl4a and Elovl4b. The *C. gariepinus* Elovl4a and Elovl4b have open reading frames (ORF) of 945 and 915 base pairs, respectively, encoding putative proteins of 314 and 304 amino acids, respectively. Functional characterization in yeast showed both Elovl4 enzymes have activity towards all the PUFA substrates assayed (18:4n-3, 18:3n-6, 20:5n-3, 20:4n-6, 22:5n-3, 22:4n-6 and 22:6n-3), producing elongated products of up to  $C_{36}$ . Moreover, the *C. gariepinus* Elovl4a and Elovl4b were able to elongate very long-chain saturated FA (VLC-SFA) as denoted by increased levels of 28:0 and longer FA in yeast transformed with *elovl4* ORF compared to control yeast. These results confirmed that *C. gariepinus* Elovl4 play important roles in the biosynthesis of very long-chain FA. Tissue distribution analysis of *elovl4* mRNAs showed both

genes were widely expressed in all tissues analyzed, with high expression of *elovl4a* in pituitary and brain, whereas female gonad and pituitary had the highest expression levels for *elovl4b*.

**Keywords** *Clarias gariepinus* · *elovl4* · Essential fatty acids · Biosynthesis · Very long-chain fatty acids

## Abbreviations

aa	Amino acid
ABO	Accessory breathing organ
ANOVA	Analysis of variance
ARA	Arachidonic acid
bp	Base pair
cDNA	Complementary DNA
DHA	Docosahexaenoic acid
EFA	Essential fatty acid
Elovl	Elongation of very long-chain fatty acid protein
EPA	Eicosapentaenoic acid
ER	Endoplasmic reticulum
FA	Fatty acid
FAME	Fatty acid methyl ester
Fads	Fatty acyl desaturase
LC-PUFA	Long-chain ( $\geq C_{20}$ ) polyunsaturated fatty acid
NTC	No template control
ORF	Open reading frame
PCR	Polymerase chain reaction
PUFA	Polyunsaturated fatty acid
qPCR	Quantitative real-time polymerase chain reaction
SCMM <sup>-ura</sup>	<i>Saccharomyces cerevisiae</i> minimal medium minus uracil

✉ Oscar Monroig  
oscar.monroig@stir.ac.uk

<sup>1</sup> Faculty of Natural Sciences, Institute of Aquaculture, University of Stirling, Stirling FK9 4LA, Scotland, UK

<sup>2</sup> Department of Biological Sciences, University of Abuja, P.M.B. 117, Abuja, Nigeria

<sup>3</sup> Instituto de Acuicultura Torre de la Sal (IATS-CSIC), 12595 Ribera de Cabanes, Castellón, Spain

VLC-SFA	Very long-chain ( $>C_{24}$ ) saturated fatty acid
VLC-PUFA	Very long-chain ( $>C_{24}$ ) polyunsaturated fatty acid

## Introduction

Elongation of very long-chain fatty acid (Elovl) proteins catalyze the condensation reaction, regarded as the first and rate-limiting step of four sequential reactions required for the elongation of fatty acids (FA) [1, 2]. Seven members (Elovl 1–7) with similar motifs make up the Elovl protein family in vertebrates, although only Elovl2, Elovl4 and Elovl5 have been proven to have polyunsaturated fatty acids (PUFA) as substrates for elongation [1, 2]. Importantly, the complement of Elovl, along with that of fatty acyl desaturases (Fads), determines the ability of species to biosynthesize physiologically essential fatty acids (EFA) such as eicosapentaenoic acid (EPA, 20:5n-3), arachidonic acid (ARA, 20:4n-6) and docosahexaenoic acid (DHA, 22:6n-3) [3]. Fish have arguably been the group of organisms in which the most comprehensive characterization of Elovl gene repertoire and function has been conducted, particularly farmed species [4]. These studies have shown that Elovl5 elongates predominantly  $C_{18}$  and  $C_{20}$  PUFA, whilst Elovl2 preferentially elongates  $C_{20}$  and  $C_{22}$  PUFA [4], thus denoting somewhat overlapping functionalities that are likely to derive from a common evolutionary origin [5]. However, the substrate specificities of Elovl4 proteins from vertebrates including fish have remained more elusive [4].

Cloning and functional characterization of a teleost Elovl4 was first carried out in zebrafish *Danio rerio* [6]. It was shown that two Elovl4 genes, termed Elovl4a and Elovl4b, were present, in contrast to mammals in which only a single Elovl4 had been reported [7]. Interestingly, both *D. rerio* Elovl4 showed an ability to elongate saturated fatty acids, but only Elovl4b appeared to have a role in the biosynthesis of very long-chain ( $>C_{24}$ ) polyunsaturated fatty acids (VLC-PUFA) [6]. Since this pioneer study in fish, further *elovl4* cDNA sequences have been studied in a variety of species including Atlantic salmon, Nibe croaker, orange-spotted grouper and rabbitfish [8–11]. Interestingly, with the exception of the zebrafish *elovl4a* [6], all *elovl4* cDNA cloned from other teleost fish species have been confirmed to be orthologues of the zebrafish *elovl4b*, although *in silico* searches indicated that virtually all teleosts possess at least one copy of both *elovl4a* and *elovl4b* [4]. Recently, two further elongases termed *elovl4c-1* and *elovl4c-2* were identified from the Atlantic cod, *Gadus morhua*, although their functionalities remain to be elucidated [12]. In addition to the differences in

substrate specificities, further evidence suggesting that Elovl4a and Elovl4b participate in different biological processes was provided by tissue expression patterns suggesting *elovl4a* was highly expressed in the brain, whereas *elovl4b* was highly expressed in eye (retina) and gonads [6, 12]. These results were consistent with studies on mammals indicating that these tissues are important sites for very long-chain fatty acid biosynthesis. Thus, very long-chain ( $>C_{24}$ ) saturated fatty acids (VLC-SFA) have been shown to play key roles in skin permeability barrier formation and thus essential for neonatal survival [13–15], whereas VLC-PUFA are essential in phototransduction and male fertility [16–18].

An interesting trait that apparently differentiates fish Elovl4 from non-fish vertebrate Elovl4 orthologues is the ability of the former to catalyze the elongation of  $C_{22}$  PUFA substrates to  $C_{24}$  products. In particular, all fish Elovl4b characterized to date have shown the ability to efficiently elongate 22:5n-3 to 24:5n-3, a critical enzymatic step in the biosynthesis of DHA through the Sprecher pathway [19]. The acquisition or retention of such an ability by some fish Elovl4 has been hypothesized to compensate the loss of *elovl2* during the evolution history of some teleost lineages encompassing the vast majority of farmed marine fish species [6, 10, 11, 20]. Indeed, the apparent absence of *elovl2*, along with that of key desaturation activities, has been regarded as molecular evidence accounting for the low capacity of marine fish species to biosynthesize EPA, ARA and DHA [21].

Our overall aim is to elucidate the repertoire and function of genes encoding *elovl* and *fads* enzymes involved in the biosynthesis of essential fatty acids in the African catfish, *Clarias gariepinus*, a commercially important species in Sub-Saharan African aquaculture [22]. *C. gariepinus* are freshwater fish with a variety of characteristics that makes them ideal for fish farming. African catfish *C. gariepinus* is a fast growing species, can be cultured at high densities and tolerates poor water quality due to the possession of accessory air-breathing organs [23, 24]. *C. gariepinus* is an omnivorous fish and, while in the wild they feed on insects, crustaceans, worms, gastropods, fishes and plants, they accept a wide range of feed ingredients in captivity [24]. With regards to PUFA biosynthesizing enzymes, Agaba *et al.* [25] characterized an Elovl5 from *C. gariepinus* that was primarily active towards  $C_{18-20}$  PUFA substrates. More recently, we successfully isolated and functionally characterized an Elovl2 elongase with preference towards  $C_{20-22}$  PUFA substrates, as well as a Fads2 desaturase with dual  $\Delta 6\Delta 5$  activity [26]. In the present study, we characterized, both molecularly and functionally, two *elovl4* cDNA from *C. gariepinus* and investigated their tissue expression patterns.

## Materials and Methods

### Sample Collection and RNA Preparation

Tissue samples used in this study were obtained from adult *C. gariepinus* specimens (~1.8 kg) raised in the tropical aquarium of the Institute of Aquaculture, University of Stirling, UK, and fed on standard salmonid diets. All experimental procedures were approved by the Animal Welfare and Ethical Review Board of the University of Stirling and conducted in compliance with the Animals Scientific Procedures Act 1986 (Home Office Code of Practice, HMSO: London January 1997). Eight *C. gariepinus* individuals (four male and four female) were sacrificed with an overdose of tricaine methanesulfonate (MS222) before collection of tissue samples including liver, eye, intestine, pituitary, testis, ovary, skin, muscle, gills, kidney, head kidney, accessory breathing organ (ABO), adipose tissue, stomach, heart and brain. The samples were immediately preserved in RNA stabilization buffer (3.6 M ammonium sulphate, 18 mM sodium citrate, 15 mM EDTA, pH 5.2) and stored at  $-80^{\circ}\text{C}$  until required. Total RNA was extracted from tissues derived from individual fish using TRI Reagent® (Sigma-Aldrich, USA). Purity and concentration of total RNA was assessed using the NanoDrop® (Labtech International ND-1000 spectrophotometer) and integrity was assessed on an agarose gel. First strand complementary DNA (cDNA) was synthesized from 1 µg total RNA using High Capacity cDNA Reverse Transcription Kit (Applied Biosystems™, USA) following the manufacturer's instructions.

### Molecular Cloning of *elovl4* cDNA

Amplification of partial fragments of the genes was achieved by polymerase chain reaction (PCR) using a mixture of cDNA from eye and brain as template. For amplification of the first fragment of the *C. gariepinus elovl4a*, the primers UniE4aF (5'-CTCTTCCTCTGGCTGGGG-3') and UniE4aR (5'-TATGTCTGGTAGTAGAAGTTCC-3') were designed on conserved regions after alignment (BioEdit v7.0.9, Tom Hall, Department of Microbiology, North Carolina State University, USA) of *elovl4a*-like sequences from *D. rerio* (gblNM\_200796.1), *G. morhua* (KF964008.1), *Takifugu rubripes* (gblXM\_003965960.1) and *Ictalurus punctatus* (gblJT417431.1). Similarly, *elovl4b* homologous sequences from *Siganus canaliculatus* (gblJF320823.1), *Rachycentron canadum* (gblHM026361.1), *Salmo salar* (gblNM\_001195552.1) and *I. punctatus* (gblJT405661.1) were aligned to design primers UniE4bF (5'-TAGCAGACAAGCGGTGG-3') and UniE4bR (5'-CAAAGAGGATGATGAAGGTGA-3') used for the amplification of the first fragment of *C. gariepinus elovl4b*. PCR conditions consisted of an initial denaturation step at  $95^{\circ}\text{C}$  for 2 min, followed

by 35 cycles of denaturation at  $95^{\circ}\text{C}$  for 30 s, annealing at  $55^{\circ}\text{C}$  for 30 s, extension at  $72^{\circ}\text{C}$  for 55 s, followed by a final extension at  $72^{\circ}\text{C}$  for 7 min. PCR fragments were purified using the Illustra GFX PCR DNA/gel band purification kit (GE Healthcare, UK), and sequenced at GATC Biotech Ltd. (Germany).

Gene-specific primers were designed to obtain full-length cDNA by 5' and 3' Rapid Amplification of cDNA Ends (RACE) PCR (FirstChoice® RLM-RACE RNA ligase mediated RACE kit, Ambion®, Life Technologies™, USA). Positive RACE PCR products were identified by sequencing (GATC Biotech Ltd). The full nucleotide sequences of both *elovl4* cDNA sequences were obtained by aligning sequences of the first fragments, together with those of the 5' and 3' RACE PCR positive products (BioEdit). All primers used in RACE PCR are listed in Table 1.

### Sequence and Phylogenetic Analysis

The deduced amino acid (aa) sequences of both *C. gariepinus elovl4* cDNA sequences were compared to corresponding orthologues from other vertebrate species by calculating the identity scores using the EMBOSS Needle Pairwise Sequence Alignment tool ([http://www.ebi.ac.uk/Tools/psa/emboss\\_needle/](http://www.ebi.ac.uk/Tools/psa/emboss_needle/)). Phylogenetic analysis of the deduced aa sequences of the Elov14 proteins from *C. gariepinus* and Elov1 from a variety of vertebrate species was performed by constructing a tree using the neighbor-joining method [27] with MEGA 6.0 software ([www.megasoftware.net](http://www.megasoftware.net)). Confidence in the resulting tree branch topology was measured by bootstrapping through 1000 iterations.

### Functional Characterization of *C. gariepinus Elov14a* and *Elov14b* by Heterologous Expression in *Saccharomyces cerevisiae*

PCR fragments corresponding to the open reading frame (ORF) of *C. gariepinus* newly cloned *elovl4* cDNA were amplified from a mixture of cDNA synthesized from eye and brain RNA, using the high fidelity *Pfu* DNA polymerase (Promega, USA) with primers containing *Bam*HI (forward) and *Xho*I (reverse) restriction sites (Table 1). PCR conditions consisted of an initial denaturation at  $95^{\circ}\text{C}$  for 2 min, followed by 32 cycles of denaturation at  $95^{\circ}\text{C}$  for 30 s, annealing at  $55^{\circ}\text{C}$  for 30 s, extension at  $72^{\circ}\text{C}$  for 2 min followed by a final extension at  $72^{\circ}\text{C}$  for 7 min. The DNA fragments obtained were purified as described above, digested with the appropriate restriction enzymes (New England Biolabs, UK), and ligated into the similarly digested pYES2 expression vector (Invitrogen, UK) to produce the plasmid constructs pYES2-*elovl4a* and pYES2-*elovl4b*.

Yeast competent cells InvSc1 (Invitrogen) were transformed with pYES2-*elovl4a* and pYES2-*elovl4b* using the

**Table 1** Sequences of primers used for molecular cloning of full-length cDNA and tissue expression analysis (qPCR) of *Clarias gariepinus elovl4a* and *elovl4b*

Name	Direction	Sequence
<i>Initial cDNA cloning</i>		
UniE4aF	Forward	5'-CTCTTCCTCTGGCTGGGG-3'
UniE4aR	Reverse	5'-TATGTCTGGTAGTAGAAGTTCC-3'
UniE4bF	Forward	5'-TAGCAGACAAGCGGGTGG-3'
UniE4bR	Reverse	5'-CAAAGAGGATGATGAAGGTGA-3'
<i>5' RACE</i>		
CGRE4aR3	Reverse	5'-GCAAGGAAGAGCTCTTTGAAG-3'
CGRE4aR2	Reverse	5'-ACAATTAGGGTCTTCTGAGCT-3'
CGRE4bR3	Reverse	5'-GCAGCACCATGCTGAAGT-3'
CGRE4bR2	Reverse	5'-TGAAAGCGTCTCGGTGCT-3'
<i>3' RACE</i>		
CGRE4aF1	Forward	5'-TCATTGTCCTCTTTGGGAAC-3'
CGRE4aF2	Forward	5'-GCACTGGTGTCTGATTGGTTAT-3'
CGRE4bF2	Forward	5'-CTCACTCGCTGTACTCCGG-3'
CGRE4bF3	Forward	5'-CCAGTTCATGTCACAATCG-3'
<i>ORF cloning</i>		
CGE4aVF	Forward	5'-CCCGGATCCAAGATGGATATTGTAACAC-3'
CGE4aVR	Reverse	5'-CCGCTCGAGCTAGTCCCGCTTTGCCCTGCC-3'
CGE4bVF	Forward	5'-CCCGGATCCAACATGGAAACGGTGCTTC-3'
CGE4bVR	Reverse	5'-CCGCTCGAGTCACTCCCTCTTTGTTCGTTCC-3'
<i>qPCR</i>		
CGqE4aF1	Forward	5'-GAGATGCAGAAGCAGGCATA-3'
CGqE4aR1	Reverse	5'-TTGAGCCTCCTCCAAACAGT-3'
CGqE4bF1	Forward	5'-GAGGAACGCACTGGGAAC-3'
CGqE4bR1	Reverse	5'-AAACGCCATCTATCCCATTG-3'
28SrRNAF1	Forward	5'-GTCCTTCTGATGGAGGCTCA-3'
28SrRNAR1	Reverse	5'-CGTGCCGGTATTTAGCCTTA-3'

Restriction sites for *Bam*HI (forward) and *Xho*I (reverse) are italicized

S.c. EasyComp™ Transformation Kit (Invitrogen). Selection of yeast containing the pYES2 constructs was done on *S. cerevisiae* minimal medium minus uracil (SCMM<sup>-ura</sup>) plates. One single yeast colony was grown in SCMM<sup>-ura</sup> broth for 2 days at 30 °C, and subsequently subcultured in individual Erlenmeyer flasks until optical density measured at a wavelength of 600 nm (OD<sub>600</sub>) reached 1, after which galactose (2%, w/v) and a PUFA substrate at a final concentration of 0.50 mM (C<sub>18</sub>), 0.75 mM (C<sub>20</sub>) and 1.0 mM (C<sub>22</sub>) were added. The FA substrates included stearidonic acid (18:4n-3), gamma-linolenic acid (18:3n-6), EPA (20:5n-3), ARA (20:4n-6), docosapentaenoic acid (22:5n-3), docosatetraenoic acid (22:4n-6) and DHA (22:6n-3). In addition to exogenously added PUFA substrates, some Elov14 have been shown to elongate saturated FA [6]. Consequently, the ability of *C. gariepinus* Elov14 enzymes to elongate yeast endogenous saturated FA was investigated. For that purpose, the saturated FA profiles of yeast transformed with empty pYES2 vector and those of yeast transformed with either pYES2-*elovl4a* or pYES2-*elovl4b* were compared after growing the yeast without addition of any substrate.

After 2 days, yeast were harvested, washed twice with double distilled water and freeze-dried until further analysis. All FA substrates (>98–99% pure) used for the functional characterization assays, except for stearidonic acid (18:4n-3) were obtained from Nu-Chek Prep, Inc (Elysian, MN, USA). Stearidonic acid (>99% pure) and yeast culture reagents including galactose, nitrogen base, raffinose, tergitol NP-40 and uracil dropout medium were obtained from Sigma-Aldrich (Poole, UK).

### Fatty Acid Analysis of Yeast

Total lipids extracted from freeze-dried samples of yeast [28] were used to prepare fatty acid methyl esters (FAME) as described in detail previously [26]. Identification of the peaks was carried out as described by Li *et al.* [29]. Briefly, FAME were identified and quantified after splitless injection and run in temperature programming, in an Agilent 6850 gas chromatograph system, equipped with a Sapiens-5MS (30 m × 0.25 μm × 0.25 μm) capillary column (Teknokroma, Spain) coupled to a 5975 series mass



spectrometer detector (Agilent Technologies, USA). The elongation of endogenous saturated FA was assessed by comparison of the areas of the FA of control yeast with those of yeast transformed with either pYES2-*elovl4a* or pYES2-*elovl4b*. As described in detail by Li *et al.* [29], the elongation conversions of exogenously added PUFA substrates (18:4n-3, 18:3n-6, 18:4n-3, 20:5n-3, 20:4n-6, 22:5n-3 and 22:6n-3) were calculated by the step-wise proportion of substrate FA converted to elongated product as [areas of first product and longer chain products/(areas of all products with longer chain than substrate + substrate area)]  $\times 100$ .

### Gene Expression Analysis

Expression of the newly cloned *C. gariepinus elovl4* cDNAs was measured by quantitative real-time PCR (qPCR). RNA extraction from *C. gariepinus* tissues (four male and four females) and cDNA synthesis were carried out as described above. PCR amplicons of each gene cloned into PCR 2.1 vector (TA cloning<sup>®</sup> kit, Invitrogen, Life Technologies<sup>™</sup>, USA) were linearized, quantified and serial-diluted to generate a standard curve of known copy numbers for quantification [26]. All qPCR amplifications were carried out in duplicate using Biometra Thermocycler (Analytik Jena Company, Germany) and Luminaris Color Higrreen qPCR master mix (Thermo Scientific, USA) following the manufacturer's instructions. QPCR were performed in a final volume of 20  $\mu$ l containing 5  $\mu$ l diluted (1/20) cDNA, 1  $\mu$ l (10  $\mu$ M) of each primer, 3  $\mu$ l nuclease free water and 10  $\mu$ l Luminaris Color Higrreen qPCR master mix. The qPCR conditions were 50 °C for 2 min, 95 °C for 10 min followed by 35 cycles of denaturation step at 95 °C for 15 s, annealing at 59 °C for 30 s and extension at 72 °C for 30 s. After amplification, a dissociation curve of 0.5 °C increments from 60 to 90 °C was performed, enabling confirmation of a single product in each reaction. Identity of the qPCR products was further confirmed by DNA sequencing of selected samples (GATC Biotech Ltd.). Negative controls (no template control, NTC) containing no cDNA were systematically run. Absolute copy number of the target and reference gene in each sample was calculated from the linear standard curve constructed. Normalization of each target gene was carried out by dividing the absolute copy number of the candidate gene by the absolute copy number of the reference gene, 28S rRNA (gb|AF323692.1). In order to prepare solutions of known copy numbers, DNA concentration of linearized PCR 2.1 vectors containing a fragment of either candidate or reference genes was determined, and their molecular weights estimated as 660 g  $\times$  length in base pair (bp) of the plasmid constructs. Primers used for qPCR analysis are presented in Table 1.

### Statistical Analysis

Tissue expression (qPCR) results were expressed as mean normalized ratios ( $n = 4$ ) ( $\pm$ SE) corresponding to the ratio between the copy numbers of the target genes (*elovl4a* and *elovl4b*) and the copy numbers of the reference gene, 28S rRNA. Differences in gene expression among tissues were analyzed by one-way analysis of variance (ANOVA) followed by Tukey's HSD test at a significance level of  $P \leq 0.05$  (IBM SPSS Statistics 21, USA).

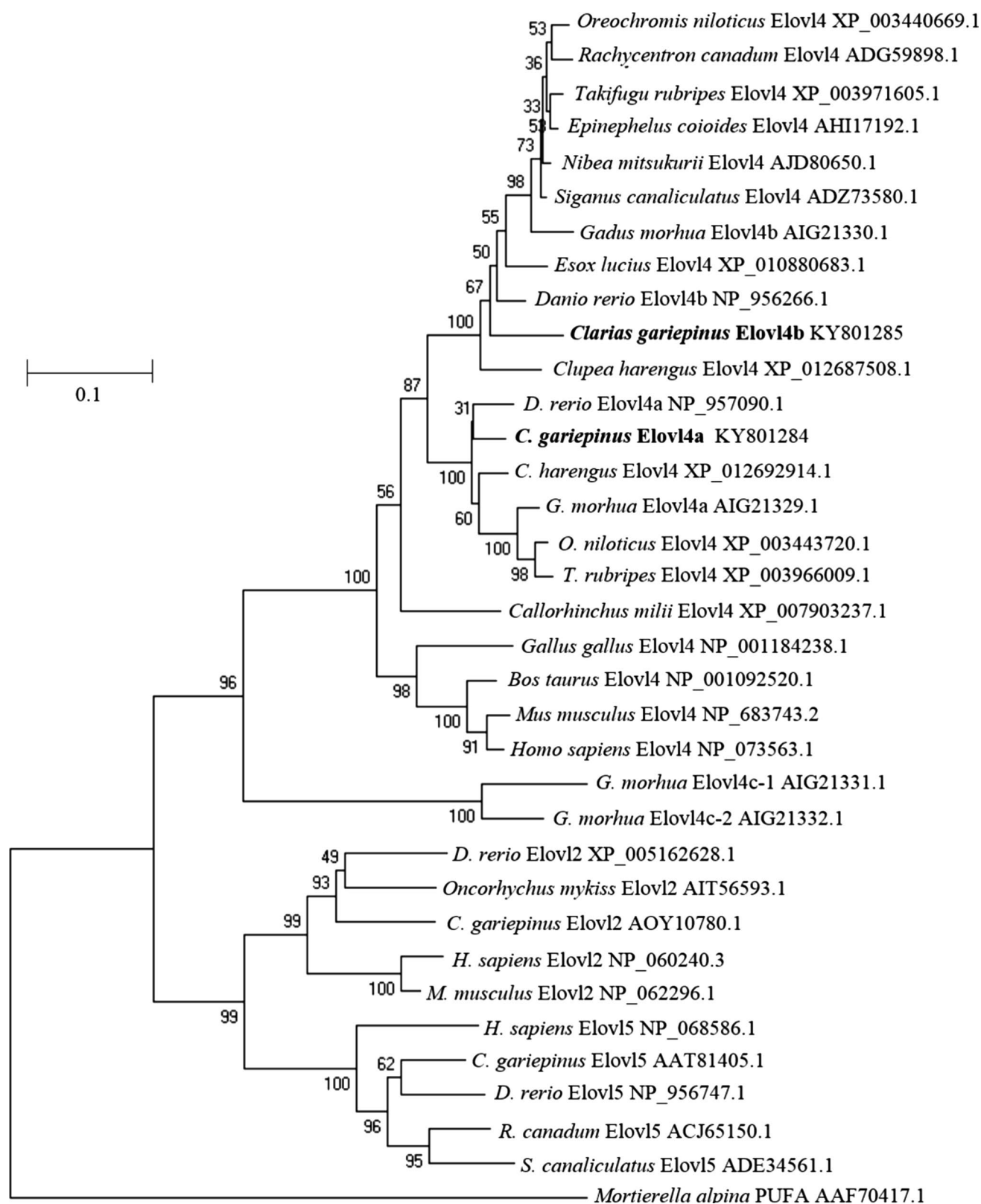
### Results

#### Elov14 Sequence and Phylogenetic Analysis

The sequence and phylogenetic analysis revealed that *C. gariepinus* possesses two *elovl4* cDNAs with homology to the *D. rerio* Elov14 proteins [6] and, for consistency, were termed as *elovl4a* and *elovl4b*. The full-length of the *C. gariepinus elovl4a* cDNA consisted of 1403 bp that contained an ORF of 945 bp encoding a putative protein of 314 aa. Whereas, the full-length of the *C. gariepinus elovl4b* was 1181 bp, with a 915 bp ORF encoding a putative protein of 304 aa. Both cDNA sequences have been deposited with the GenBank database under the accession number KY801284 (*elovl4a*) and KY801285 (*elovl4b*).

Phylogenetic analysis showed that *C. gariepinus* Elov14 proteins grouped together with orthologues from a variety of vertebrates, with Elov12 and Elov15 sequences clustering separately (Fig. 1). Within the teleost Elov14, two distinct clusters containing each of the two Elov14 from *C. gariepinus* could be identified. In one cluster, the *C. gariepinus* Elov14a grouped closely with Elov14a-like sequences from *D. rerio* (gb|NP\_957090.1), *G. morhua* (gb|AIG21330.1), *C. harengus* (gb|XP\_012692914.1), *Oreochromis niloticus* (gb|XP\_003443720.1) and *T. rubripes* (gb|XP\_003966009.1). In the other, the *C. gariepinus* Elov14b grouped with Elov14b-like sequences from *D. rerio* (gb|NP\_956266.1), *N. mitsukuri* (gb|AJD80650.1), *R. canadum* (ADG59898.1) and *G. morhua* (gb|AIG213329.1). These results confirmed that the newly cloned *elovl* cDNA from *C. gariepinus* encoded Elov14a and Elov14b proteins. Interestingly, the two so-called "Elov14c" previously reported in *G. morhua* [12] grouped separately from all vertebrate Elov14 (Fig. 1).

Sequence analysis of the *C. gariepinus* putative Elov14a and Elov14b proteins showed that both possessed all the characteristic features of Elov1 family members including a single histidine dideoxy binding motif HXXHH, the putative endoplasmic reticulum (ER) retrieval signal with an arginine (R) and lysine (K) residue at the carboxyl terminus, RXXXX) and multiple regions containing similar



**Fig. 1** Phylogenetic tree comparing the deduced amino acid sequences of *Clarias gariepinus* Elov14a and Elov14b (highlighted in bold) with Elov14, Elov12 and Elov15 sequences from a range of vertebrates. The tree was constructed using the neighbor-joining method [27] with the MEGA 6.0 software. The numbers represent the fre-

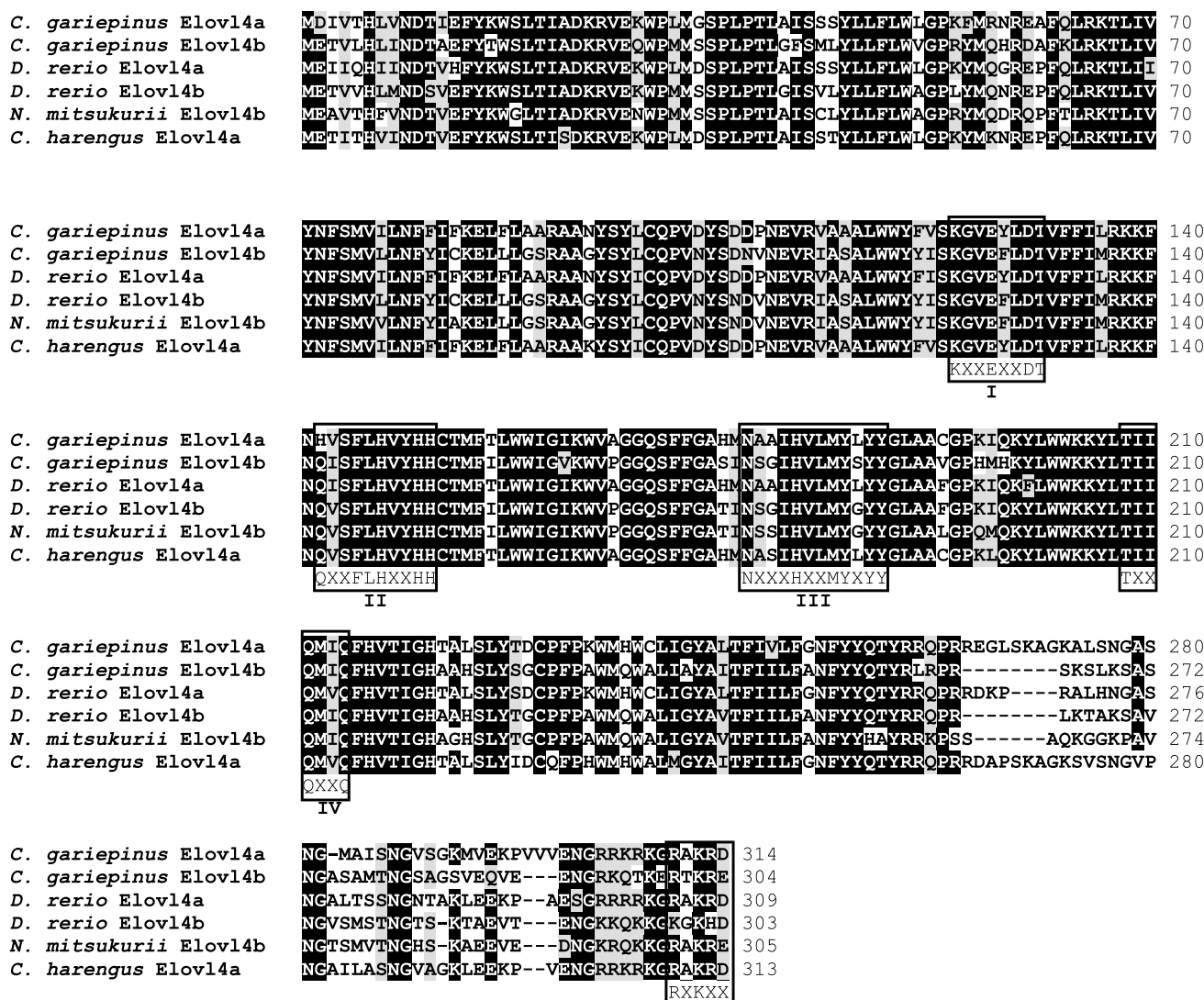
quencies (%) with which the tree topology presented was replicated after 1000 iterations. The *Mortierella alpina* PUFA elongase was included in the analysis as outgroup sequence to construct the rooted tree

motifs such as (1) KXXEXXDT, (2) QXXFLHXXHH, (3) NXXXHXXMYXXY, (4) TXXQXXQ (Fig. 2) [2, 25]. The deduced aa sequences from the *C. gariepinus* Elov14a and Elov14b were 70.7% similar to each other. Comparing the aa sequences of *C. gariepinus* Elov14 deduced proteins with other fish Elov14 sequences revealed that Elov14a shared highest identities with *Clupea harengus* (gbIXP\_012692914.1) (87.0%) and *D. rerio* Elov14a (85.7%), whereas *C. gariepinus* Elov14b shared highest identities with *D. rerio* Elov14b (83.6%) and *Nibe mitsukurii* Elov14 (gbAJD80650.1) (81.0%). The aa sequence of *C. gariepinus* Elov14a shared 41.5% and 38.0%, respectively, with previously described *C. gariepinus* Elov15 and

Elov12 elongases, while identity scores of 43 and 40.8%, respectively, were obtained for Elov14b.

### Functional Characterization of *C. gariepinus* Elov14 in Yeast

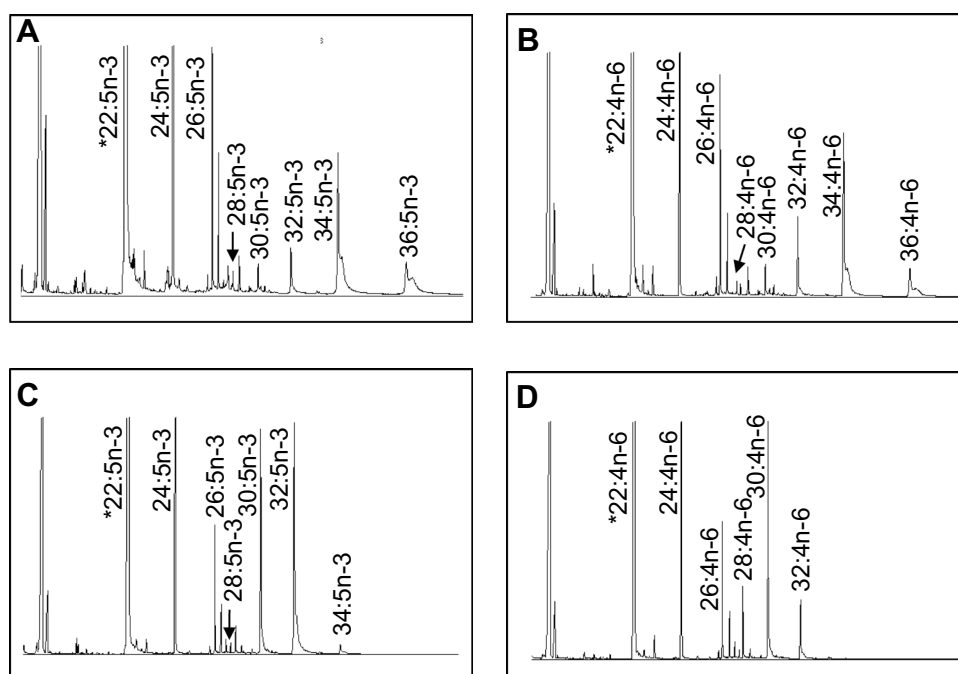
The role of the *C. gariepinus* Elov14 enzymes in the elongation of very long-chain saturated FA was assessed by comparison of the saturated ( $\geq C_{24}$ ) FA profiles of control yeast transformed with empty pYES2 with those of yeast transformed with either pYES2-*elov14a* or pYES2-*elov14b* and grown in all cases in the absence of exogenously added FA. The results confirmed that the *C. gariepinus* Elov14



**Fig. 2** ClustalW amino acid alignment of the deduced *Clarias gariepinus* Elov14 proteins with orthologues from *Danio rerio* (Elov14a, gbINP\_957090.1; Elov14b, gbINP\_956266.1), *Nibe mitsukurii* (gbAJD80650.1) and *Clupea harengus* (gbIXP\_012692914.1). Identical residues are shaded black and similar residues (based on the

Blosum62 matrix, using ClustalW default parameters) are shaded grey. Indicated are four (i–iv) conserved motif of elongases: (i) KXXEXXDT, (ii) QXXFLHXXHH, (iii) NXXXHXXMYXXY and (iv) TXXQXXQ. The putative endoplasmic reticulum (ER) retrieval signal RXXXX at C-terminus is also indicated [25]

**Fig. 3** Functional characterization of the newly cloned *Clarias gariepinus* Elovl4a (**a, b**) and Elovl4b (**c, d**) in yeast (*Saccharomyces cerevisiae*). The fatty acid profiles of yeast transformed with pYES2 containing the coding sequence of *elovl4a* and *elovl4b* were determined after the yeast were grown in the presence of one of the exogenously added substrates 22:5n-3 (**a, c**), and 22:4n-6 (**b, d**). The first peak (with asterisk) is derived from the exogenously added substrates. The elongation products are indicated accordingly in each panel



enzymes were involved in the biosynthesis of very long-chain saturated FA since yeast expressing both *elovl4a* and *elovl4b* generally contained higher levels of saturated FA  $\geq C_{28}$ . More specifically, yeast expressing the *C. gariepi-*

**Table 2** Functional characterization of *Clarias gariepinus* Elovl4 elongases: role in biosynthesis of very long-chain saturated fatty acids (FA)

FA	Control	Elovl4a	Elovl4b
24:0	1.19 $\pm$ 0.10 <sup>a</sup>	1.60 $\pm$ 0.25 <sup>b</sup>	1.51 $\pm$ 0.08 <sup>b</sup>
26:0	23.46 $\pm$ 1.15 <sup>a</sup>	22.49 $\pm$ 0.76 <sup>a</sup>	26.82 $\pm$ 4.81 <sup>a</sup>
28:0	0.95 $\pm$ 0.19 <sup>a</sup>	4.42 $\pm$ 0.62 <sup>b</sup>	2.23 $\pm$ 0.33 <sup>b</sup>
30:0	0.23 $\pm$ 0.06 <sup>a</sup>	2.51 $\pm$ 0.44 <sup>b</sup>	0.48 $\pm$ 0.05 <sup>a</sup>
32:0	0.04 $\pm$ 0.01 <sup>a</sup>	0.40 $\pm$ 0.02 <sup>b</sup>	0.11 $\pm$ 0.04 <sup>b</sup>

Results are expressed as an area percentage of total saturated FA  $\geq C_{24}$  found in yeast transformed with either *C. gariepinus* *elovl4* coding regions or empty pYES2 vector (control)

*nus elovl4a* had significantly higher levels of 28:0, 30:0 and 32:0 compared to control yeast, whereas yeast expressing the *C. gariepinus elovl4b* contained higher levels of 28:0 and 32:0 compared to controls (Table 2).

The role of the *C. gariepinus* Elovl4 enzymes in VLC-PUFA biosynthesis was investigated by growing transgenic yeast expressing the *C. gariepinus elovl4a* and *elovl4b* cDNA in the presence of potential PUFA substrates (Fig. 3). While transgenic yeast were able to elongate exogenously added PUFA substrates with chain lengths ranging from  $C_{18}$  to  $C_{22}$ , the conversions were markedly higher for longer

chain substrates (Table 3). For Elovl4a, step-wise elongation products derived from exogenously supplemented PUFA and with  $C_{28-34}$  were very efficiently elongated as denoted by high conversions that were often above 80% (Table 3). In contrast, the *C. gariepinus* Elovl4b was generally less active in the yeast expression system, leading to elongation products with a maximum length of  $C_{34}$  and with generally lower conversions compared to Elovl4a (Table 3). As an exception, the Elovl4b was very efficient at utilizing 22:6n-3 to produce intermediate elongation products up to 32:6n-3. It is important to note that both Elovl4 enzymes were able to produce 24:5n-3 from 22:5n-3 supplied directly or converted from exogenously supplied 20:5n-3 (Table 3; Fig. 3).

#### Tissue Expression Analysis of *C. gariepinus* *elovl4a* and *elovl4b*

Tissue distribution analysis of *elovl4* mRNA measured by qPCR indicated both genes were expressed in all tissues analyzed, with high expression of *elovl4a* detected in pituitary and brain, whereas *elovl4b* expression was highest in female gonad and pituitary (Fig. 4). Lowest expression signals for both *elovl4* were recorded in liver.

#### Discussion

Elovl enzymes with a role in long-chain ( $\geq C_{20}$ ) PUFA (LC-PUFA) biosynthesis have been investigated extensively in fish [4], particularly in farmed species in which current diet



**Table 3** Functional characterization of *Clarias gariepinus* Elovl4 elongases: role in biosynthesis of very long-chain polyunsaturated fatty acids (VLC-PUFA)

FA substrate	Product	% Conversion		Elongation
		Elovl4a	Elovl4b	
18:4n-3	20:4n-3	3.7	2.0	C18 → 36
	22:4n-3	26.8	6.4	C20 → 36
	24:4n-3	53.1	7.9	C22 → 36
	26:4n-3	62.9	6.8	C24 → 36
	28:4n-3	100	3.7	C26 → 36
	30:4n-3	100	48.9	C28 → 36
	32:4n-3	91.2	48.4	C30 → 36
	34:4n-3	83.6	1.4	C32 → 36
	36:4n-3	7.7	N.D.	C34 → 36
	20:3n-6	6.0	3.0	C18 → 36
18:3n-6	22:3n-6	49.5	9.9	C20 → 36
	24:3n-6	73.2	12.2	C22 → 36
	26:3n-6	80.2	29.4	C24 → 36
	28:3n-6	100	100	C26 → 36
	30:3n-6	100	100	C28 → 36
	32:3n-6	100	51.7	C30 → 36
	34:3n-6	69.5	N.D.	C32 → 36
	36:3n-6	8.1	N.D.	C34 → 36
	22:5n-3	20.4	6.3	C20 → 36
	24:5n-3	41.4	13.2	C22 → 36
20:5n-3	26:5n-3	55.8	4.7	C24 → 36
	28:5n-3	100	100	C26 → 36
	30:5n-3	100	19.3	C28 → 36
	32:5n-3	83.3	69.9	C30 → 36
	34:5n-3	93.4	12.0	C32 → 36
	36:5n-3	48.1	N.D.	C34 → 36
	22:4n-6	26.0	7.5	C20 → 36
	24:4n-6	54.6	15.9	C22 → 36
	26:4n-6	70.4	10.9	C24 → 36
	28:4n-6	85.4	9.9	C26 → 36
20:4n-6	30:4n-6	99.2	63.1	C28 → 36
	32:4n-6	96.5	28.4	C30 → 36
	34:4n-6	87.1	N.D.	C32 → 36
	36:4n-6	27.4	N.D.	C34 → 36
	22:5n-3	14.2	5.2	C22 → 36
	26:5n-3	51.1	3.9	C24 → 36
	28:5n-3	83.4	2.4	C26 → 36
	30:5n-3	98.3	31.0	C28 → 36
	32:5n-3	96.5	64.4	C30 → 36
	34:5n-3	89.8	5.6	C32 → 36
22:5n-3	36:5n-3	34.3	N.D.	C34 → 36
	24:4n-6	19.1	7.6	C22 → 36
	26:4n-6	69.9	9.9	C24 → 36
	28:4n-6	87.0	9.3	C26 → 36
	30:4n-6	99.2	67.7	C28 → 36
	32:4n-6	96.1	24.0	C30 → 36
	34:4n-6	83.8	N.D.	C32 → 36
	24:4n-6	19.1	7.6	C22 → 36
	26:4n-6	69.9	9.9	C24 → 36
	28:4n-6	87.0	9.3	C26 → 36
22:4n-6	30:4n-6	99.2	67.7	C28 → 36
	32:4n-6	96.1	24.0	C30 → 36
	34:4n-6	83.8	N.D.	C32 → 36

**Table 3** (continued)

FA substrate	Product	% Conversion		Elongation
		Elovl4a	Elovl4b	
22:6n-3	36:4n-6	24.3	N.D.	C34 → 36
	24:6n-3	0.8	0.9	C22 → 32
	26:6n-3	N.D.	100	C24 → 32
	28:6n-3	N.D.	100	C26 → 32
	30:6n-3	N.D.	100	C28 → 32
	32:6n-3	N.D.	43.7	C30 → 32

*Saccharomyces cerevisiae* transformed with empty pYES2 vector (control) or pYES2 vector containing *C. gariepinus elovl4* coding region were grown in the presence of one exogenously added polyunsaturated fatty acid (PUFA) substrate C<sub>18</sub> (18:4n-3 and 18:3n-6), C<sub>20</sub> (20:5n-3 and 20:4n-6) and C<sub>22</sub> (22:5n-3, 22:4n-6 and 22:6n-3). Conversions were calculated for each stepwise elongation according to the formula [areas of first products and longer chain products/ (areas of all products with longer chain than substrate + substrate area)] × 100. The substrate FA varies as indicated in each step-wise elongation

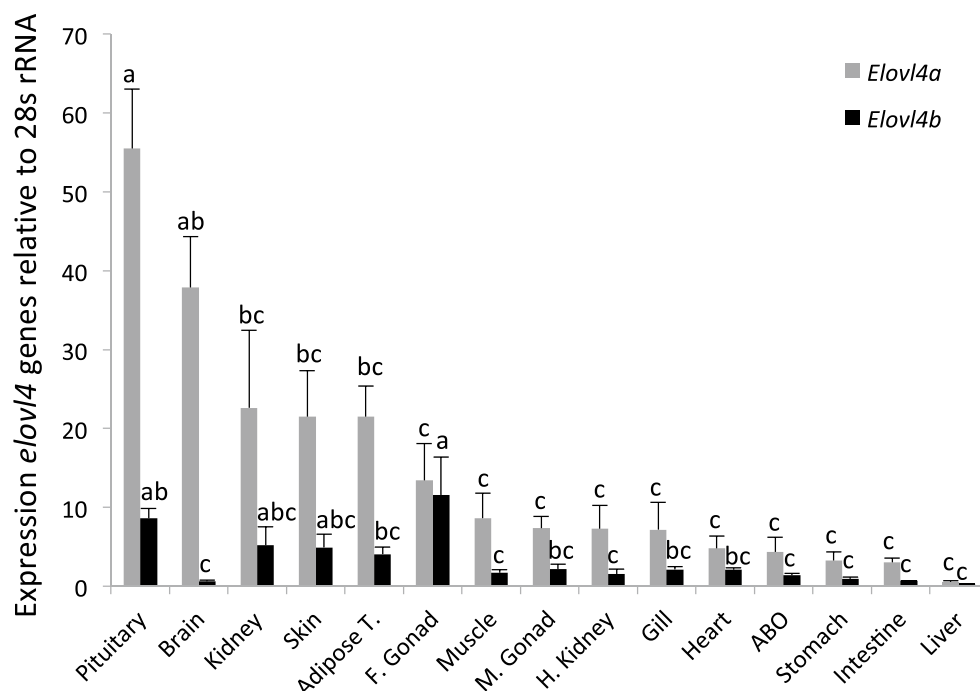
ND not detected

formulations including vegetable oils might compromise the provision of EPA [30]. While Elovl5 and Elovl2 have been regarded as key elongases within LC-PUFA biosynthetic pathways, Elovl4 has received less attention despite the key role that these elongases has in crucial physiological processes including vision, reproduction and neuronal functions of vertebrates [7, 31, 32]. The present study confirmed that the *C. gariepinus* Elovl4 enzymes play critical roles in the biosynthesis of very long-chain saturated fatty acids (VLC-SFA) and PUFA (VLC-PUFA), and may also participate in the biosynthesis of DHA from EPA.

Phylogenetic analysis confirmed two isoforms of Elovl4 (Elovl4a and Elovl4b) were isolated. The Elovl4 proteins, although similar, were separated into different branches of the phylogenetic tree. The Elovl4a protein formed a group with *D. rerio* Elovl4a and other Elovl4 separate from the group consisting of *C. gariepinus* Elovl4b and Elovl4b from fish species including *D. rerio*. This is in agreement with *in silico* studies that suggested all teleosts possess both types of Elovl4 [4]. The functionally uncharacterized putative Elovl4c reported in *G. morhua* formed a group separate from all other Elovl4 sequences and therefore it is uncertain if these are true Elovl4 proteins. Functional characterization of these genes is required to confirm this.

Different functions were determined for the *C. gariepinus* Elovl4 isoforms. It was confirmed that the *C. gariepinus* Elovl4a and Elovl4b participate in the biosynthesis of VLC-SFA. Thus, yeast expressing both *elovl4a* and *elovl4b* had increased levels of VLC-SFA with C<sub>28–32</sub> compared to control yeast. These results were consistent with elongation abilities of some teleost Elovl4 reported previously although, in some species like *S. salar* and *R. canadum*,

**Fig. 4** Tissue distribution of *Clarias gariepinus elovl4a* and *elovl4b* transcripts. Expression levels quantified for each target gene were normalized with the expression of the reference gene 28 s rRNA. Data are reported as mean values with their standard errors ( $n = 4$ ). Within each target gene, different letters indicate statistically significant differences in expression level among tissues (ANOVA and Tukey's HSD post hoc tests). ABO accessory breathing organ, Adipose T. adipose tissue, F. Gonad female gonad, M. Gonad male gonad



Elov4 were able to elongate up to 36:0 [6, 8, 33]. VLC-SFA play important roles in skin permeability of mammals [13, 15] and are incorporated into sphingolipids in the brain, although their role in the brain is yet to be ascertained [31]. In fish, the physiological functions of VLC-SFA have been barely investigated, although it is reasonable to believe that these compounds also have important roles in brain function of teleosts. This is supported by the high expression signal of both *elovl4* isoforms in the head region of zebrafish embryos [6], and the high expression levels in brain of certain *elovl4* with the ability to biosynthesize VLC-SFA like Elov4a from zebrafish [6] and the herein characterized *C. gariepinus*. The existence of neurons within the hypophysis, specifically in the posterior part (neurohypophysis), may likely explain the high expression of *elovl4a* and *elovl4b* observed in the present study. Other *C. gariepinus* tissues analyzed also contained transcripts of *elovl4a*, indicating a widespread distribution as previously reported for the zebrafish *D. rerio elovl4a*, the only *elovl4a*-like sequence so far characterized in teleosts [6]. With regards to *elovl4b*, transcripts were also detected in all tissues analyzed, thus confirming a widespread distribution as described in cobia [33] and Atlantic salmon [8]. In contrast, relatively restricted tissue distributions of *elovl4b* were described in zebrafish [6] and rabbitfish [11], species in which photoreception tissues such as eye (retina) and pineal gland appear to be the major sites of Elov4b activity [6, 11]. Unfortunately, we could not analyze the expression of the target genes in eye or pineal, although preliminary experiments indicated that both *C. gariepinus elovl4* were expressed in the eye. Furthermore,

the *C. gariepinus elovl4b* was highly expressed in female gonads suggesting that, in addition to the role it may play in male reproduction of mammals, as VLC-PUFA determines male fertility [18, 31], fish Elov4b might also have important functions in female reproduction. The above described expression patterns of the *C. gariepinus elovl4* genes, together with those tissues containing marked amounts of VLC-PUFA [31, 34], are in agreement with the roles that both Elov4 play in the biosynthesis of VLC-PUFA in *C. gariepinus*.

Both Elov4 showed the ability to biosynthesize VLC-PUFA of up to 34–36 carbons through consecutive elongations from all PUFA assayed including compounds with different chain lengths ( $C_{18-22}$ ) and series (n-3 and n-6). While this is a common trait among Elov4b-like enzymes [6, 8, 11, 29, 33], the ability of the *C. gariepinus* Elov4a to produce VLC-PUFA up to 36 carbons was somewhat unexpected since the only Elov4a characterized so far from *D. rerio* showed little ability to biosynthesize VLC-PUFA [6]. Whereas current evidence does not allow us to clarify which of the two Elov4a phenotypes (*D. rerio* or *C. gariepinus*) is more prevalent among teleosts, the apparent differences might be in response to ecological and evolutionary factors as previously hypothesized for both elongases [5, 21] and desaturases [35, 36]. Irrespective of the mechanism driving the distinct phenotype among Elov4a enzymes, it is clear that the *C. gariepinus* orthologue was very efficient in the production of VLC-PUFA from exogenously supplemented PUFA substrates. Such elongation capabilities largely apply to the *C. gariepinus* Elov4b, although a distinctive trait of

Elovl4b is its ability to efficiently elongate exogenously added 22:6n-3 to 32:6n-3, a VLC-PUFA that has been detected in retinal phosphatidylcholine of gilthead seabream *Sparus aurata* [37]. Despite the ability of the *C. gariepinus* Elovl4b to produce 32:6n-3 from DHA (22:6n-3), the latter does not appear to be a preferred substrate for biosynthesis of n-3 VLC-PUFA in bovine and rat retina [38, 39]. It was demonstrated that, while exogenously supplemented EPA and 22:5n-3 acted as precursors for VLC-PUFA biosynthesis, DHA was incorporated directly into retinal phospholipids without further metabolism.

Irrespective of whether teleost Elovl4 can utilize DHA or not, their ability to elongate 22:5n-3 to 24:5n-3 suggested that Elovl4 can play a role in DHA biosynthesis through the Sprecher pathway [19]. This pathway requires the production of 24:5n-3 for further  $\Delta 6$  desaturation and partial  $\beta$ -oxidation to DHA, and Elovl2 has been identified as a major candidate elongase accounting for the provision of 24:5n-3 from 22:5n-3 [4]. *C. gariepinus* possess an Elovl2 with the abovementioned ability to elongate 22:5n-3 to 24:5n-3 [26], indicating that Elovl2 and Elovl4 have partly overlapping functions as previously described between Elovl2 and Elovl5 [5]. In contrast, teleosts within the Acanthopterygii clade have apparently lost Elovl2 [40], and consequently the presence of Elovl4 with the ability to elongate 22:5n-3 is clearly advantageous to compensate for this loss [4]. Studies in mammals have not fully clarified whether ELOVL4 participates in DHA biosynthesis. High expression of *ELOVL4* in tissues where DHA accounted for a large proportion of the PUFA content including retina, brain and testis, along with the crucial role DHA plays in the development and function of these tissues suggested a role of mammalian ELOVL4 in DHA biosynthesis [7, 32, 41, 42]. Moreover, Vasireddy *et al.* [15] reported a reduction in DHA and 22:5n-3 in non-polar lipids and free FA of whole skin of mouse without a functional *ELOVL4* compared to skin from wild type controls. On the contrary, Agbaga *et al.* [7, 16] concluded ELOVL4 did not participate in DHA biosynthesis in mammals or may play a redundant role, the latter hypothesis aligning well with the overlapping roles between Elovl2 and Elovl4 described above.

In conclusion, the present study demonstrated that *C. gariepinus* possess two distinct *elovl4*-like elongases with high homology to the previously described zebrafish Elovl4a and Elovl4b. Both *C. gariepinus* Elovl4 participate in the biosynthesis of both VLC-SFA and VLC-PUFA. While previous studies on teleosts had reported on the ability of Elovl4b-like elongases to operate efficiently towards both saturated and polyunsaturated FA, the herein described ability of the *C. gariepinus* Elovl4a to elongate PUFA was in contrast to that of *D. rerio* Elovl4a, the only Elovl4a-like elongase functionally characterized to date. The tissue distribution of *C. gariepinus elovl4* mRNA largely followed

previous observations in other teleosts, with neuronal and reproductive tissues exhibiting the highest expression levels.

**Acknowledgements** AO is a Commonwealth scholar funded by the Commonwealth Scholarship Commission (NGCS-2014-438) in the UK. This project was partly funded by MINECO (Spanish Government—AGL2013-40986R). Additionally, DRT and OM were partly supported by the Major International Joint Research Project from the National Natural Science Foundation of China (NSFC) (No. 31110103913).

**Open Access** This article is distributed under the terms of the Creative Commons Attribution 4.0 International License (<http://creativecommons.org/licenses/by/4.0/>), which permits unrestricted use, distribution, and reproduction in any medium, provided you give appropriate credit to the original author(s) and the source, provide a link to the Creative Commons license, and indicate if changes were made.

## References

- Guillou H, Zadavec D, Martin PGP, Jacobsson A (2010) The key roles of elongases and desaturases in mammalian fatty acid metabolism: insights from transgenic mice. *Prog Lipid Res* 49:186–199
- Jacobsson A, Westerberg R, Jacobsson A (2006) Fatty acid elongases in mammals: their regulation and roles in metabolism. *Prog Lipid Res* 45:237–249
- Bell MV, Tocher DR (2009) Biosynthesis of polyunsaturated fatty acids in aquatic ecosystems: general pathways and new directions. In: Arts MT, Brett M, Kainz M (eds) *Lipids in aquatic ecosystems*. Springer, New York, pp 211–236
- Castro LFC, Tocher DR, Monroig O (2016) Long-chain polyunsaturated fatty acid biosynthesis in chordates: insights into the evolution of Fads and Elovl gene repertoire. *Prog Lipid Res* 62:25–40
- Monroig Ó, Lopes-Marques M, Navarro JC, Hontoria F, Ruivo R, Santos MM, Venkatesh B, Tocher DR, Castro LFC (2016) Evolutionary functional elaboration of the *Elovl2/5* gene family in chordates. *Sci Rep* 6:20510
- Monroig Ó, Rotllant J, Cerda-Reverter JM, Dick JR, Figueras A, Tocher DR (2010) Expression and role of Elovl4 elongases in biosynthesis of very long-chain fatty acids during zebrafish *Danio rerio* early embryonic development. *Biochim Biophys Acta* 1801:1145–1154
- Agbaga MP, Brush RS, Mandal MNA, Henry K, Elliott MH, Anderson RE (2008) Role of Stargardt-3 macular dystrophy protein (ELOVL4) in the biosynthesis of very long chain fatty acids. *Proc Natl Acad Sci* 105:12843–12848
- Carmona-Antoñanzas G, Monroig O, Dick JR, Davie A, Tocher DR (2011) Biosynthesis of very long-chain fatty acids (CN24) in Atlantic salmon: cloning, functional characterisation, and tissue distribution of an Elovl4 elongase. *Comp Biochem Physiol B* 159:122–129
- Kabeya N, Yamamoto Y, Cummins SF, Elizur A, Yazawa R, Takeuchi Y, Haga Y, Satoh S, Yoshizaki G (2015) Polyunsaturated fatty acid metabolism in a marine teleost, Nibe croaker *Nibea mitsukurii*: functional characterization of Fads2 desaturase and Elovl5 and Elovl4 elongases. *Comp Biochem Physiol B* 188:37–45
- Li S, Monroig Ó, Navarro JC, Yuan Y, Xu W, Mai K, Tocher DR, Ai Q (2015) Molecular cloning and functional characterization of a putative *Elovl4* gene and its expression in response to dietary fatty acid profiles in orange-spotted grouper *Epinephelus coioides*. *Aquac Res*. doi:10.1111/are.12902

11. Monroig Ó, Wang S, Zhang L, You C, Tocher DR, Li Y (2012) Elongation of long-chain fatty acids in rabbitfish *Siganus canaliculatus*: cloning, functional characterisation and tissue distribution of Elovl5- and Elovl4-like elongases. *Aquaculture* 350–353:63–70
12. Xue X, Feng CY, Hixson SM, Johnstone K, Anderson DM, Parrish CC, Rise ML (2014) Characterization of the fatty acyl elongase (elovl) gene family, and hepatic elovl and delta-6 fatty acyl desaturase transcript expression and fatty acid responses to diets containing camelina oil in Atlantic cod (*Gadus morhua*). *Comp Biochem Physiol B* 175:9–22
13. Cameron DJ, Tong Z, Yang Z, Kaminoh J, Kamiyah S, Chen H, Zeng J, Chen Y, Lou L, Zhang K (2007) Essential role of Elovl4 in very long chain fatty acid synthesis, skin permeability barrier function, and neonatal survival. *Int J Biol Sci* 3:111–119
14. Uchida Y, Holleran WM (2008) Omega-*O*-acylceramide, a lipid essential for mammalian survival. *J Dermatol Sci* 51:77–87
15. Vasireddy V, Uchida Y, Salem N Jr, Kim SY, Mandal MNA, Reddy GB, Bodepudi R, Alderson NL, Brown JC, Hama H, Dlugosz A, Elias PM, Holleran WM, Ayyagari R (2007) Loss of functional ELOVL4 depletes very long-chain fatty acids ( $\geq C28$ ) and the unique  $\omega$ -*O*-acylceramides in skin leading to neonatal death. *Hum Mol Gen* 16:471–482
16. Agbaga MP, Mandal MNA, Anderson RE (2010) Retinal very long-chain PUFAs: new insights from studies on ELOVL4 protein. *J Lipid Res* 51:1624–1642
17. McMahon A, Kedziński W (2010) Polyunsaturated extremely long chain C28–C36 fatty acids and retinal physiology. *Br J Ophthalmol* 94:1127–1132
18. Zdravcov D, Tvrdik P, Guillou H, Haslam R, Kobayashi T, Napier JA, Capecchi MR, Jacobsson A (2011) ELOVL2 controls the level of n-6 28:5 and 30:5 fatty acids in testis, a prerequisite for male fertility and sperm maturation in mice. *J Lipid Res* 52:245–255
19. Sprecher H (2000) Metabolism of highly unsaturated n-3 and n-6 fatty acids. *Biochim Biophys Acta* 1486:219–231
20. Monroig Ó, Navarro JC, Tocher DR (2011) Long-chain polyunsaturated fatty acids in fish: recent advances on desaturases and elongases involved in their biosynthesis. In: Cruz-Suarez LE, Rique-Marie D, Tapia-Salazar M, Nieto-Lopez MG, Villarreal-Cavazos DA, Gamboa-Delgado J, Hernandez-Hernandez LH (eds) XI international symposium on aquaculture nutrition, 23–25 Nov 2011, San Nicolas de los Garza, N.L. Universidad Autonoma de Nuevo Leon, Monterrey, Nuevo Leon, Mexico, pp 257–282
21. Morais S, Monroig Ó, Zheng X, Leaver M, Tocher DR (2009) Highly unsaturated fatty acid synthesis in Atlantic salmon: characterization of ELOVL5- and ELOVL2-like elongases. *Mar Biotechnol* 11:627–639
22. FAO (2016) The State of World Fisheries and Aquaculture 2016. Contributing to food security and nutrition for all. FAO, Rome
23. De Graaf GJ, Janssen JAL (1996) Artificial reproduction and pond rearing of the African catfish, *Clarias gariepinus* in sub-Saharan Africa—a handbook FAO Fisheries Technical Paper. No 362. FAO, Rome
24. Poumogne V (2010) Cultured aquatic species information programme. *Clarias gariepinus* 2010. FAO, Rome. Accessed 7 Aug 2017
25. Agaba MK, Tocher DR, Zheng X, Dickson CA, Dick JR, Teale AJ (2005) Cloning and functional characterisation of polyunsaturated fatty acid elongases of marine and freshwater teleost fish. *Comp Biochem Physiol B Biochem Mol Biol* 142:342–352
26. Oboh A, Betancor MB, Tocher DR, Monroig Ó (2016) Biosynthesis of long-chain polyunsaturated fatty acids in the African catfish *Clarias gariepinus*: molecular cloning and functional characterisation of fatty acyl desaturase (*fads2*) and elongase (*elovl2*) cDNAs. *Aquaculture* 462:70–79
27. Saitou N, Nei M (1987) The neighbor-joining method. A new method for reconstructing phylogenetic trees. *Mol Bio Evol* 4:406–425
28. Folch J, Lees M, Sloane-Stanley GH (1957) A simple method for the isolation and purification of total lipids from animal tissues. *J Biol Chem* 226:497–509
29. Li S, Monroig Ó, Navarro JC, Yuan Y, Xu W, Mai K, Tocher DR, Ai Q (2017) Molecular cloning and functional characterization of a putative Elovl4 gene and its expression in response to dietary fatty acid profiles in orange-spotted grouper *Epinephelus coioides*. *Aquac Res* 48:538–552
30. Tocher DR (2015) Omega-3 long-chain polyunsaturated fatty acids and aquaculture in perspective. *Aquaculture* 449:94–107
31. Agbaga MP (2016) Different mutations in ELOVL4 affect very long chain fatty acid biosynthesis to cause variable neurological disorders in humans. In: Bowes Rickman C, LaVail M, Anderson R, Grimm C, Hollyfield J, Ash J (eds) Retinal degenerative diseases. Advances in experimental medicine and biology, vol 854. Springer, Cham, p 30
32. Mandal MNA, Ambasudhan R, Wong PW, Gage PJ, Sieving PA, Ayyagari R (2004) Characterization of mouse orthologue of ELOVL4: genomic organization and spatial and temporal expressions. *Genomics* 83:626–635
33. Monroig Ó, Webb K, Ibarra-Castro L, Holt GJ, Tocher DR (2011) Biosynthesis of long-chain polyunsaturated fatty acids in marine fish: characterization of an Elovl4-like elongase from cobia *Rachycentron canadum* and activation of the pathway during early life stages. *Aquaculture* 312:145–153
34. Poulos A (1995) Very long chain fatty acids in higher animals—a review. *Lipids* 30:1–14
35. Li Y, Monroig Ó, Zhang L, Wang S, Zheng X, Dick JR, You C, Tocher DR (2010) A vertebrate fatty acyl desaturase with  $\Delta 4$  activity. *Proc Natl Acad Sci USA* 107:16840–16845
36. Fonseca-Madrigal J, Navarro JC, Hontoria F, Tocher DR, Martinez-Palacios CA, Monroig Ó (2014) Diversification of substrate specificities in teleostei *Fads2*: characterization of  $\Delta 4$  and  $\Delta 6\Delta 5$  desaturases of *Chirostoma estor*. *J Lipid Res* 55:1408–1419
37. Monroig Ó, Hontoria F, Varó I, Tocher DR, Navarro JC (2016) Biosynthesis of very long-chain ( $>C_{24}$ ) polyunsaturated fatty acids in juveniles of Gilthead seabream (*Sparus aurata*). In: The 17th international symposium on fish nutrition and feeding, June 5–10, Sun Valley, Idaho
38. Rotstein NP, Pennacchiotti GL, Sprecher H, Avelandano MI (1996) Active synthesis of  $C_{24:5}$ , n-3 fatty acid in retina. *Biochem J* 316:859–864
39. Suh M, Clandinin MT (2005) 20:5n-3 but not 22:6n-3 is a preferred substrate for synthesis of n-3 very-long-chain fatty acids ( $C_{24}$ – $C_{36}$ ) in retina. *Curr Eye Res* 30:959–968
40. Leaver MJ, Bautista JM, Björnsson T, Jönsson E, Krey G, Tocher DR, Torstensen BE (2008) Towards fish lipid nutrigenomics: current state and prospects for fin-fish aquaculture. *Rev Fish Sci* 16:71–92
41. Zhang K, Kniazeva M, Han M, Li W, Yu Z, Yang Z, Li Y, Metzker ML, Allikmets R, Zack DJ, Kakuk LE, Lagali PS, Wong PW, MacDonald IM, Sieving PA, Figueroa DJ, Austin CP, Gould RJ, Ayyagari R, Petrukhin K (2001) A 5-bp deletion in ELOVL4 is associated with two related forms of autosomal dominant macular dystrophy. *Nat Genet* 27:89–93
42. Zhang X, Yang Z, Karan G, Hashimoto T, Baehr W, Yang X, Zhang K (2003) *Elovl4* mRNA distribution in the developing mouse retina and phylogenetic conservation of *Elovl4* genes. *Mol Vis* 9:301–307