

Accepted refereed manuscript of:

Jones IL, Bunnefeld N, Jump A, Peres CA & Dent D (2016)  
Extinction debt on reservoir land-bridge islands, *Biological  
Conservation*, 199, pp. 75-83.

DOI: [10.1016/j.biocon.2016.04.036](https://doi.org/10.1016/j.biocon.2016.04.036)

© 2016, Elsevier. Licensed under the Creative Commons Attribution-  
NonCommercial-NoDerivatives 4.0 International  
<http://creativecommons.org/licenses/by-nc-nd/4.0/>

**TITLE:**

# **Extinction debt on reservoir land-bridge islands**

**AUTHORS:**

Isabel L. Jones<sup>a\*</sup>, Nils Bunnefeld<sup>a</sup>, Alistair S. Jump<sup>a</sup>, Carlos A. Peres<sup>b</sup>, Daisy H. Dent<sup>a,c</sup>

<sup>a</sup>Biological and Environmental Sciences, University of Stirling, Stirling, FK9 4LA, UK.

\*Corresponding author. Phone +44 (0)7738 009612, email <i.l.jones@stir.ac.uk>

<sup>b</sup>School of Environmental Sciences, University of East Anglia, Norwich, NR4 7TJ, UK.

<sup>c</sup>Smithsonian Tropical Research Institute, Apartado 0843–03092, Balboa, Panama.

**KEYWORDS:**

Conservation policy; dams; hydropower; fragmentation; isolation; species richness

## **ABSTRACT**

Large dams cause extensive inundation of habitats, with remaining terrestrial habitat confined to highly fragmented archipelagos of land-bridge islands comprised of former hilltops. Isolation of biological communities on reservoir islands induces local extinctions and degradation of remnant communities. “Good practice” dam development guidelines propose using reservoir islands for species conservation, mitigating some of the detrimental impacts associated with flooding terrestrial habitats. The degree of species retention on islands in the long-term, and hence, whether they are effective for conservation is currently unknown. Here, we quantitatively review species’ responses to isolation on reservoir islands. We specifically investigate island species richness in comparison with neighbouring continuous habitat, and relationships between island species richness and island area, isolation time, and distance to mainland and to other islands. Species’ responses to isolation on reservoir islands have been investigated in only 15 of the >58 000 large-dam reservoirs (dam height >15 m) operating globally. Research predominantly originates from wet tropical forest habitats and focuses on mammals, with species richness being the most widely-reported ecological metric. Terrestrial taxa are, overall, negatively impacted by isolation on reservoir islands. Reservoir island species richness declines with isolation time, and although the rate of loss is slower on larger islands, all islands exhibit depauperate species richness <100 years after isolation, compared to continuous mainland habitats. Such a pattern of sustained and delayed species loss following large-scale habitat disturbance is indicative of an extinction debt existing for reservoir island species: this pattern is evident across all taxonomic groups and dams studied. Thus, reservoir islands cannot reliably be used for species conservation as part of impact mitigation measures, and should instead be included in area calculations for land impacted by dam creation. Environmental licensing assessments as a precondition for future dam development should explicitly consider the long-term fate of island communities when assessing biodiversity loss vs energy output.

## **1. INTRODUCTION**

There are 58 402 large dams (dam height >15 m) operating globally, constructed predominantly for irrigation and hydropower generation (ICOLD, 2016). A growing human population is predicted to increase the demand for water by 2-3% per year, and the demand for energy by >56% globally between 2010-2040. Energy demand is estimated to rise by 90% in increasingly industrialised countries with emerging economies over the same period (EIA, 2013; WCD, 2000). Concurrently, changing climatic and precipitation patterns, including severe droughts, will likely further increase demand for water and reduce hydropower generation from large reservoirs (Oki and Kanae, 2006).

Hydropower is regarded as a renewable “green” energy source, and dams constructed in areas with steep topography and high rainfall produce the most energy per unit area (Finer and Jenkins, 2012). However dams are often constructed in low-lying areas with high conservation value: for example 154 dams operate in the Amazon basin with a further 277 planned (Castello et al., 2013; Lees et al., 2016). The construction of dams directly impacts both terrestrial and freshwater ecosystems through inundation of habitat, compositional changes in biological communities, and the loss of structural and functional connectivity between upper and lower reaches of watersheds (Finer et al., 2008; Lees et al., 2016; Nilsson et al., 2005; Palmeirim et al., 2014; Sá-Oliveira et al., 2015).

Over 50% of the world’s large river systems and >60% of the combined habitat area of tropical, subtropical and boreal forests, tropical and subtropical grasslands, savannahs and shrublands have been estimated to be impacted by dams (Nilsson et al., 2005). Inundation of terrestrial habitats, and tropical forests in particular, can result in significant carbon emissions from reservoirs in the form of CO<sub>2</sub> and CH<sub>4</sub>, which can persist for many years after inundation and often over the lifetime of the reservoir (Abril et al., 2005; Demarty & Bastien, 2011; Fearnside, 2002; Fearnside & Pueyo, 2012). Direct social impacts arise from the loss of indigenous lands, displacement of communities, and disruption to local economies reliant on fisheries often concurrently affected by heavy metal accumulation (Boudou et al., 2005; Fearnside, 1999). Additionally, increased access to previously undisturbed habitat can elevate levels of hunting and deforestation in areas surrounding reservoirs (Kirby et al., 2006; Peres and Lake, 2003).

69

70 When dams are built, habitat is lost through inundation, with remnants of previously continuous  
71 terrestrial habitat confined to highly fragmented land-bridge island archipelagos comprised of former  
72 hilltops. “Good practice” guidelines (International Energy Agency, 2006) for dam developers to  
73 mitigate ecological impacts from dam construction, include implementing protected areas covering  
74 land-bridge islands and habitat surrounding reservoirs. For example, the REBIO Uatumã (the largest  
75 Biological Reserve in Brazil) encompasses approximately half of the Balbina hydroelectric reservoir,  
76 including all islands east of the former left bank of the Uatumã river and mainland areas extending  
77 away from the eastern edge of the reservoir. Strictly-protected area status has largely deterred small-  
78 scale slash-and-burn agriculture and extraction of resources within the REBIO Uatumã, on both  
79 islands and within surrounding continuous forest (Benchimol & Peres, 2015a, 2015b). However, we  
80 do not know whether protecting reservoir islands is effective for biodiversity conservation, due to a  
81 lack of long-term monitoring. The International Energy Agency highlights the dearth of systematic  
82 evaluation of any mitigation, enhancement, and compensation measures currently being  
83 recommended to large dam developers (International Energy Agency, 2000; Trussart et al., 2002).

84

85 Fragmentation of habitat causes a number of impacts to species, such as population reductions and  
86 local extinctions; the strength of fragmentation impacts differ depending on the taxonomic group and  
87 life-history traits of species (Bender et al., 1998; Fahrig 2003; Forman, 1995; Turner, 1996). Previous  
88 studies of reservoir island archipelagos have shown that island taxa typically experience a novel  
89 hyper-disturbance regime, resulting in drastic shifts in species diversity and community composition  
90 through species turnover, and altered carrying capacity of the remaining habitat (Benchimol & Peres,  
91 2015a; Cosson et al., 1999b; Ferreira et al., 2012; Hanski & Ovaskainen, 2000; Terborgh et al., 2001).  
92 Local species extinctions on reservoir islands have been observed for plants (Benchimol & Peres,  
93 2015a; Yu et al., 2012), invertebrates (Emer et al., 2013; Feer & Hingrat, 2005), birds (Yu et al.,  
94 2012), bats (Cosson et al., 1999a), small-mammals (Gibson et al., 2013; Lambert et al., 2003), and  
95 mid-sized to large-bodied vertebrates (Benchimol & Peres, 2015b, 2015c). Populations of some  
96 species can become hyper-abundant on islands, and invasive species can establish, further impacting

other taxa (Chauvet & Forget, 2005; Feeley & Terborgh, 2006; Gibson et al., 2013; Lopez & Terborgh, 2007).

Changes in island communities may not occur immediately after inundation; instead, species may be subject to an “extinction debt” whereby a portion of species are initially lost, followed, potentially multiple generations later, by further species extinctions (Halley et al., 2014; Kitzes and Harte, 2015; Kuussaari et al., 2009; Tilman et. al., 1994). Thus, the effects of fragmentation and isolation can persist for years after initial habitat loss, as communities undergo “relaxation” towards a new equilibrium community (Diamond, 1972; Diamond, 2001; Ewers and Didham, 2006; Feeley et al., 2007; Terborgh et al., 1997; Wang et al., 2009). The “relaxation” process is likely mediated by island area, with species losses faster on smaller islands, and a greater time-lag for species loss on larger islands (Diamond, 1972; Gonzalez, 2000). There are a number of empirical methods for calculating extinction debt (Kitzes and Harte, 2015; Wearn et al., 2012), and here we consider a decline in species richness on islands over time, compared to mainland continuous habitat, as evidence of extinction debt. In the absence of extinction debt, we assume that all species extinctions would happen immediately, with no evidence of further degradation of insular biological communities through time (Kitzes and Harte, 2015).

In the long-term it is unknown how reservoir island communities will continue change with increasing isolation time, as the creation of artificial archipelagos from dam construction has only occurred over the past century. Our present knowledge of ecological communities within artificial archipelagos comes from multiple snapshot studies from different countries, dams, habitats and taxa, at different time points since the originally continuous habitat was fragmented. Bringing these snapshots together enables identification of general trends across disparate studies, aiding development of policy-relevant recommendations in terms of the conservation value of reservoir islands.

Here, we quantitatively review peer-reviewed research detailing responses of terrestrial taxa to habitat fragmentation and subsequent isolation on reservoir land-bridge islands. We then analyse species

richness data from 249 islands and adjacent continuous habitats through time. In particular, we ask:  
(1) is there evidence of an extinction debt existing for reservoir island species; i.e. compared to continuous habitat, does island species richness decrease with increasing island isolation time? and (2) how does island size, distance to continuous habitat and distance to other islands relate to patterns of species richness and rates of species loss?

## **2. METHODS**

### **2.1. Literature summary**

#### *2.1.1 Dataset collation*

We conducted a literature search using Web of Knowledge and Google Scholar search engines between January 2014 and June 2015 using the key words: hydropower or hydroelectric, reservoir or dam, island or land-bridge, and forest islands or fragments. Only full-text, peer-reviewed articles in English were retained; unpublished or grey literature was not included. Studies researching terrestrial species, guilds, taxonomic groups or communities on reservoir islands, attributing ecological responses observed to reservoir creation were retained. Experimental studies or those not explicitly stating an aspect of reservoir creation as a causal factor for the response observed were excluded. Studies which met the inclusion criteria were entered into a dataset (henceforth referred to as “dataset studies”). Literature cited in the dataset studies was also screened for inclusion, and searches for names of dams in dataset studies were performed. A total of 129 studies were assessed for inclusion in our study, 100 of which met the criteria to be retained.

#### *2.1.2 Data extraction*

Data such as the number of islands surveyed, island area, taxonomic groups investigated, and time since island isolation were extracted from studies (see Appendix A). Each study was assigned a broad habitat type (wet tropical forest, tropical grassland e.g. *cerrado*, subtropical forest, Mediterranean forest, boreal forest). Taxa investigated were broadly grouped into mammals, birds, invertebrates,

herptiles, plants, and fungi. If multiple taxa were included within a study, data were extracted for each group separately due to the potential for different responses. The precise isolation time of islands is seldom reported, thus we estimated island isolation time as the year of dam closure minus the year of field data collection. In six studies field data collection dates were not reported, thus, data collection date was conservatively estimated as two years prior to publication date.

### *2.1.3. Assigning study response directions*

For each study the authors' key results and conclusions were used to assign an overall response of the study taxa to isolation on islands (response: positive, negative, variable, or neutral; see Appendix A, column 'L'). For example, a study reporting declining species richness on islands would be assigned an overall negative response. An overall positive response would be assigned if, for example, recorded sightings (e.g. presence/absence data) were higher on islands. Overall variable responses could result from research involving different species within the same taxon, e.g. two species of bat exhibiting divergent responses to isolation. Neutral responses would result if no differences or alterations in taxa on islands compared to mainland sites were reported. If authors did not draw a conclusion as to the response directions observed, we examined the data reported and assigned a response direction accordingly. If multiple response directions for the same taxa were observed over time, the predominant response direction (i.e. over most years) was used as the overall direction.

To account for within-study complexity i.e. inclusion of multiple taxonomic groups and/or ecological metrics, response directions were derived for each taxonomic group and ecological metric investigated (see Appendix B, columns 'M-P'). Ecological metrics included species richness, population density, behaviour (e.g. foraging behaviour), community composition, presence/absence, fitness/recruitment (e.g. breeding output), genetic diversity, and functional diversity.

## **2.2 Species richness analysis**



Estimates of species richness were the most widely-reported and accessible data available in the collated studies, and therefore we selected this ecological metric for in-depth analysis.

### 2.2.1. Data collection

Dataset studies presenting species richness data for islands and nearby continuous (control) habitat, as well as island areas and isolation time, were used to assess variation in species richness on reservoir islands compared to control habitat (Table B1). These data also allowed investigation of the relationships between species richness and island area, isolation time, distance to mainland and distance to nearest island. Of the 100 dataset studies, 17 presented species richness data for islands ( $n = 249$ ; size range  $<1$ -1690 ha; isolation time  $<1$ -92 years) and control sites ( $n = 84$ ), and were used for the in-depth analysis of species richness data (Table B1; Appendix B). If data for the distance to mainland or nearest island were not presented, then if possible these data were calculated from satellite imagery using Google Earth Pro (Google, 2015). Geographically, the 17 studies suitable for species richness analysis originated from nine dams, located on three continents in three broad habitat types (wet tropical forest, subtropical forest, and tropical grassland; Table B1).

### 2.2.2. Data analysis

For each study the average species richness for control sites was calculated. The ratio of island species richness to average control species richness ( $S_{\text{RICH}}$ ) was then calculated for each site and used for analysis (see Appendix B). If a study contained data over multiple years, and thus, multiple isolation times, then species richness for control sites over the same isolation time period was averaged. If a study had multiple species richness values for the same island size, taxon, and isolation time, species richness values were averaged to avoid pseudo-replication.

To normalise data, all data were logged (natural logarithm) prior to analysis.  $S_{\text{RICH}}$  values were modelled using linear mixed effects models (lmer using lme4; Bates et al., 2014), as a function of island isolation time ( $T_{\text{ISO}}$ ), island area (AREA), distance to mainland ( $D_{\text{MAIN}}$ ) and distance to nearest island ( $D_{\text{ISLAND}}$ ) as fixed effects, with taxonomic group (TAXA), dam identity (DAM; a surrogate for

location), and study (STUDY; to account for differing survey methods and survey intensity among studies) as random effects (Bunnefeld and Phillimore, 2012; see Appendix B). Interaction terms were included between AREA,  $T_{ISO}$ ,  $D_{MAIN}$  and  $D_{ISLAND}$ , as well as between TAXA, DAM and STUDY; quadratic terms were also tested for.

Due to missing values for  $D_{MAIN}$  and  $D_{ISLAND}$  we reduced the dataset to only those data rows containing values for all variables being tested (n islands = 178) and used this dataset for linear regression and model selection in R (R Core Team, 2015). Models were simplified following stepwise deletion of non-significant terms i.e. those with a t-value <2 and models compared using Chi-square tests in ANOVA (Crawley, 2005; Table B2). Following model simplification, the final model did not include variables with missing values, thus, the final model was fitted to the whole dataset (n islands = 249). The best linear unbiased predictors (BLUPs) for each dam were extracted using the ‘ranef’ function within the lme4 R package (Pinheiro and Bates, 2000). Each dam has a different intercept, which can fall above or below that of the overall model: positive BLUPs indicate that the dam has higher than expected levels of species richness estimated from the fixed effects, and those falling below the model average indicate that species richness is lower than expected. A variance components analysis was carried out for the random effects (Crawley, 2005).

### 3. RESULTS

#### 3.1. Literature summary

The 100 dataset studies examined here were predominantly from Neotropical forest habitats (Fig. 1; 2a). Mammals were the best-studied taxonomic group (Fig. 2b); responses of terrestrial taxa isolated on reservoir islands were most often expressed in terms of species richness and presence/absence, and rarely with regards to behaviour, genetic or functional diversity (Fig. 2c). An overall negative response of terrestrial taxa to dam creation was reported in >75% of studies, and these negative responses were seen across all habitat types, ecological metrics, and taxonomic groups investigated

(Fig. 2a-c). Overall positive responses were confined to only two of the 100 studies (Fig. 2a), of which one reported increased and more stable population densities of small mammals (Adler, 1996), and the second, increased food resources for a raptor due to prey being ‘captive’ on isolated islands (Benchimol and Venticinque, 2010). Studies report results for islands isolated from <1 to 92 years, with the mean island isolation age of ~33 years (Fig. 2d).

### 3.2. Species richness analysis

The final model for analysis of  $S_{\text{RICH}}$  included  $T_{\text{ISO}}$  and AREA as fixed effects, and TAXA, DAM and STUDY as random effects (Table 1);  $D_{\text{MAIN}}$  and  $D_{\text{ISLAND}}$  had no significant effect on  $S_{\text{RICH}}$ , and no interaction terms were significant (Table B2). Of the random effects, 36% of variation was explained by STUDY, 17% explained by DAM, with 47% residual variance; TAXA did not explain any variance.

For all taxonomic groups and dams, species richness declined with island isolation time, but this effect was mediated by island size with larger islands retaining more species than smaller islands (Fig. 3). For example, predicted  $S_{\text{RICH}}$  on the largest island (1690 ha, within the Balbina hydroelectric dam, Brazilian Amazon) is predicted to be 3.2 at the mean isolation time of islands in the analysis, compared to a predicted  $S_{\text{RICH}}$  of 1.2 on the smallest island (0.17 ha, Cabra Corral, Argentina). In terms of island isolation time, even the largest island studied (1690 ha) exhibits reduced  $S_{\text{RICH}}$  in <30 years of isolation, and Barro Colorado Island (~1500 ha, Gatun Lake, Panama), which has been isolated for the longest period in our study (~92 years), similarly shows sustained species richness declines (Fig. 3).

The estimates for the random effect of DAM (BLUPs) show that the majority of dams (66%) maintain lower than expected levels of species richness i.e. species richness values fall below those predicted by the overall model (Fig. 3; Table B3). Only islands in Gatun Lake, Balbina, and Thousand Island Lake maintain higher species richness than predicted. Using our model we can predict  $S_{\text{RICH}}$  values for islands of mean area at a given isolation time, and islands of different areas at the mean isolation time,

for each reservoir. For example, the  $S_{\text{RICH}}$  for mean island size within Gatun Lake reduces from 2.24 at five years of isolation to 1.49 after 90 years of isolation. In contrast, in Lake Kenyir which maintains the lowest expected species richness values, a small island of 5 ha (at mean island isolation time) has a predicted  $S_{\text{RICH}}$  value of 1.35, which is increased to just 2.23 on an island of 1000 ha. There was no evidence that islands located nearer other terrestrial habitat or mainland continuous habitat had reduced levels of species loss.

#### 4. DISCUSSION

Our study finds that terrestrial taxa isolated on reservoir islands experience significant reductions in species richness in less than a century of isolation. Such sustained local species losses after the initial loss of habitat indicates that reservoir island species are subject to an extinction debt, which is evident across all dams, habitats, and taxa. All islands showed depauperate levels of species richness compared to continuous habitats, with smaller islands maintaining lower species richness than larger islands. Island isolation time and area, but not distance from other terrestrial habitat or the mainland, were the drivers of species richness patterns observed.

More broadly, we show that the majority of taxa are negatively impacted by reservoir creation across a range of other ecological metrics including behaviour and genetic diversity. Our current knowledge of the impacts of reservoir creation is disproportionately focussed on mammals, and originates predominantly from evergreen Neotropical forest habitats. While not all dams create archipelagic landscapes, research within our synthesis covers just 15 of the >58 000 large dams operating globally, representing a small and potentially biased sample of possible island systems. However, even with such limited data we clearly demonstrate the negative impact of dam creation on island species richness. Furthermore, we highlight the shortfalls in current conservation and impact mitigation strategies for dam development, particularly in terms of long-term biological costs, in addition to the immediate direct loss of lowland habitat during flooding.

#### 4.1. Island species richness, area, and isolation time

Classic island biogeography theory (IBT, MacArthur & Wilson, 1967) explains variation in island species richness through a balance of species immigration and distance from species source pools. In the artificial archipelagic systems we investigate in our analysis, rather than a process of species accumulation on islands, remnant communities of formerly continuous habitat undergo species loss (“relaxation”) until a new equilibrium community is reached (Diamond, 1972; Gonzalez, 2000; Lomolino, 2000).

Area was a significant predictor of species richness on islands within our analysis, as expected from the species-area relationship and IBT (Connor & McCoy, 1979; MacArthur & Wilson, 1967; Triantis et al., 2012). However distance, both to the mainland and other islands, was not a significant predictor of island species richness: this represents a departure from the IBT, and suggests the reduced importance of metapopulation dynamics (Hanski and Gilpin, 1991; With and King, 2001) and the “rescue effect” (Brown and Kodric-Brown, 1977) for maintaining insular populations in artificial archipelagic systems.

In the case of reservoir islands, remnant terrestrial habitat fragments are surrounded by a high-contrast, inhospitable water matrix, presenting a prohibitive dispersal barrier for certain taxa. Such an extreme dispersal barrier effectively renders all islands as too isolated for any “rescue effect” from wider species source pools to maintain island communities and species richness, and explains the lack of distance effects we find in our analysis (Watson, 2002). The evolutionary history and traits of species resident in continuous habitats make many incapable of dispersing through open habitats, across large distances, or through a high-contrast matrix such as open water (see Fig. 2 in Ewers & Didham, 2006). For example, the ability of tropical understorey bird species to disperse across a water matrix between islands was tested in Gatun Lake, Panama, where some species were limited to <100m of flight (Moore et al., 2008); species reliant on continuous habitats can be averse to crossing

even small clearings, such as logging roads, even when the forest canopy is closed (Develey & Stouffer, 2001; Laurance et al., 2004).

Habitat fragments surrounded by water therefore represent a worse-case scenario in terms of fragmentation effects; aside from the dispersal barrier preventing species migration, islands are subject to extreme edge effects from e.g. increased UV and wind damage, often penetrating deep into islands leading to further degradation of island biota (Benchimol & Peres, 2015b; Laurance, 2008; Murcia, 1995). Habitat fragments embedded within a more similar and potentially hospitable, but low-quality, terrestrial habitat matrix (e.g. forest fragments within an agricultural landscape) can retain higher levels of species diversity, with reduced local extinction rates (Mendenhall et al., 2011), when compared to reservoir islands of a similar size (Mendenhall et al., 2014).

We find a reduction in species richness on all islands with increasing time since initial habitat loss. Such a pattern of sustained and delayed species loss is indicative of extinction debt (Tilman et al., 1994; Kitze & Harte, 2015; Kuussaari et al., 2009). Extinction debts are especially high in areas subject to recent large-scale habitat loss, such as islands created by rapid flooding of terrestrial habitats (Hanski and Ovaskainen, 2002). Our analysis illustrates that reservoir islands are of limited long-term conservation value, due to evidence of an extinction debt: species loss appears most rapid on smaller islands, but even the largest islands studied (~1690 ha) exhibited lowered species richness in under 30 years of isolation. Ongoing species losses have been reported on another large island in our synthesis: Barro Colorado Island (BCI, ~1500 ha) has been isolated for 92 years since the formation of the Gatun Lake, Panama. In less than a century of island isolation, and despite strict environmental protection of BCI and surrounding peninsulas, 65 bird species (Robinson, 1999) and 23 butterfly species (Basset et al., 2015) have become locally extinct, alongside long-term degradation of the tree community (Leigh et al., 1993). In the Balbina hydroelectric mega-dam system in Amazonia, Benchimol and Peres (2015b) calculated that a threshold island size of 475 ha was needed to conserve >80% of terrestrial and arboreal vertebrates on islands. However, only 25 out of 3546 islands in the Balbina archipelago meet this size criterion. Balbina is protected by the largest biological reserve in

Brazil, and thus represents a best case scenario for biodiversity conservation within an artificial archipelago system. Species inhabiting other such systems, without protection, will therefore likely suffer not only from direct habitat loss through flooding and potential extinction debt, but additional human-mediated impacts such as deforestation, agriculture, hunting, and fire (Laurance, 2008; Peres, 2001).

The data we use for analysis of species richness on reservoir land-bridge islands originate from 249 islands within 9 of the 15 dams presented in Fig. 1 and allow us to show patterns applicable to all dams and taxonomic groups, although we acknowledge that publication bias towards negative impacts of reservoir creation could influence the response patterns presented. While the data do not allow us to disentangle species richness patterns for individual taxonomic groups, dams and habitat types, we have addressed this shortcoming by using random effects in linear mixed effects models (Bunnefeld and Phillimore, 2012). Similarly we cannot calculate the magnitude of extinction debts for individual taxonomic groups and/or habitat types, and instead highlight evidence that all reservoir islands are subject to an extinction debt, and therefore cannot be relied upon for long-term species conservation.

It is possible that the observed patterns of depauperate island species richness could be shaped by landscape attributes prior to inundation and non-random loss of more species-rich lowland habitat during flooding (Seabloom et al., 2002). Mainland species richness levels may have been elevated through surveying lowland habitats; such a potential sampling effect should be accounted for during survey site selection (e.g. Benchimol and Peres, 2015a). In continuous habitats the greater availability of resources allows more species to inhabit a given area, compared to the same area of isolated habitat (Ewers and Didham, 2006). Thus, sampling islands can inherently give lower species richness values than an equal area of continuous habitat (Crawley & Harral, 2001; Gonzalez, 2000; Halley et al., 2014; MacArthur & Wilson, 1963).

Data for island taxa in artificial archipelagos come from snapshots of responses to isolation in <100 years of reservoir lifetime, across multiple taxa and habitat types. In addition, no studies monitored

changes in insular community dynamics over a significant post-isolation time. Consequently, we cannot currently determine if the rates of local species loss are predictable beyond the relatively short time frame analysed here. Nor can we accurately quantify extinction debt to predict the eventual number of species able to persist in the artificial archipelago systems created due to the assumptions that would be required to do so. Further long-term monitoring of reservoir island biota is needed to allow these more detailed assessments to be made, since at present only Gatun Lake, Panama, provides data for a reservoir >90 years of age.

#### **4.2. Conservation implications**

Our study strongly suggests that islands within reservoir systems do not sustain full complements of flora and fauna in the long term; larger islands retain species for longer than smaller islands, but all island communities likely face an extinction debt. Given that degradation of island communities can be predicted to occur in all artificial archipelagic systems created by dam development, we emphasise that reservoir islands cannot be used for species conservation as part of impact mitigation strategies. The combined area of reservoir islands should be explicitly included in environmental impact assessments, in addition to the area of habitat directly lost through inundation.

Current policy to mitigate the negative impacts of dam creation on terrestrial environments consists of “good practice” guidelines with no statutory legislation requiring specific actions by developers (International Energy Agency, 2006). Environmental legislation is highly variable among countries, and there is no signatory international agreement on how to forecast, prevent or mitigate the effects of large dams. Mitigation measures can take a multitude of forms, ranging from conducting wildlife inventories and environmental impact assessments before reservoir filling, creating new habitats such as wetland zones within the reservoir system, and conservation offsets such as strictly protecting land both within and surrounding reservoirs. There is however no long-term monitoring of such practices to assess whether these mitigation measures are effective (International Energy Agency, 2000).



In light of the many dams that are planned to meet future water and electricity needs, especially in developing countries, we call for better trade-off calculations (Kareiva, 2012) to be made for future dams, accounting for long-term species loss on islands created by flooding. In addition, enhanced protection of larger islands and surrounding non-fragmented habitats is essential to avoid biological collapse in artificial archipelagic systems. We highlight the potential for additional impacts from long-term degradation of high carbon-storing habitats such as tropical forests, where erosion of island tree communities (Benchimol and Peres, 2015a) could lead to future carbon loss from tropical dams, exacerbating the greenhouse gas emissions already documented from this “green” energy source (Demarty and Bastien, 2011; Fearnside, 2009).

### **4.3. Conclusions**

We have shown that there is an overall negative response of terrestrial species and communities to isolation on reservoir land-bridge islands. These trends are seen across a broad spectrum of taxonomic groups and ecological metrics. Species isolated on reservoir islands will likely experience extinction debt, and the rate of local extinctions is driven by island size and island isolation time, independently of distance from potential source populations within the landscape. Our synthesis of current literature allows broad conclusions about the ecological impacts of reservoirs through time, and highlights the need for further research from a greater number of reservoirs over the duration of their lifetime.

Building upon the findings that we present here, investigation of the many other direct and indirect ecological impacts of reservoirs, such as loss of river habitats and connectivity, land tenure rights, and the impacts of wider infrastructure development on surrounding habitats, should be a priority for future research.

### **Acknowledgements**

We thank the Tropical Ecology and Conservation (T.E.A.C.) research group at the University of Stirling, UK, for valuable discussion when designing this study, and when interpreting the findings.

We also thank Faulk Huettmann and an anonymous reviewer, for providing valuable comments that greatly improved the manuscript.

#### **Role of the funding source**

This study was funded by the University of Stirling (UoS). UoS was not involved with the study design, data collection, analysis or interpretation of data, writing or decision to submit this manuscript.

#### **REFERENCES**

- Abril, G., Guérin, F., Richard, S., Delmas, R., Galy-Lacaux, C., Gosse, P., Tremblay, A., Varfalvy, L., Dos Santos, M.A., Matvienko, B., 2005. Carbon dioxide and methane emissions and the carbon budget of a 10-year old tropical reservoir (Petit Saut, French Guiana). *Global Biogeochem. Cycles* 19, GB4007. doi:10.1029/2005GB002457
- Adler, G.H., 1996. The Island Syndrome in Isolated Populations of a Tropical Forest Rodent. *Oecologia* 108, 694–700. doi: 10.1007/BF00329044
- Basset, Y., Barrios, H., Segar, S., Srygley, R.B., Aiello, A., Warren, A.D., Delgado, F., Coronado, J., Lezcano, J., Arizala, S., Rivera, M., Perez, F., Bobadilla, R., Lopez, Y., Ramirez, J.A., 2015. The Butterflies of Barro Colorado Island, Panama: Local Extinction since the 1930s. *PLoS One* 10, e0136623. doi:10.1371/journal.pone.0136623
- Bates, D., Maechler, M., Bolker, B., Walker, S., 2014. lme4: Linear mixed-effects models using Eigen and S4. URL: <http://cran.r-project.org/package=lme4> [Accessed 21/12/15]
- Benchimol, M., Peres, C. A., 2015a. Edge-mediated compositional and functional decay of tree assemblages in Amazonian forest islands after 26 years of isolation. *J. Ecol.* 103, 408–420. doi:10.1111/1365-2745.12371
- Benchimol, M., Peres, C. A., 2015b. Predicting local extinctions of Amazonian vertebrates in forest islands created by a mega dam. *Biol. Conserv.* 187, 61–72. doi:10.1016/j.biocon.2015.04.005
- Benchimol, M., Peres, C.A., 2015c. Widespread Forest Vertebrate Extinctions Induced by a Mega Hydroelectric Dam in Lowland Amazonia. *PLoS ONE* 10(7): e0129818. doi: 10.1371/journal.pone.0129818
- Benchimol, M., Venticinque, E.M., 2010. Harpy Eagle (*Harpia harpyja*) predation on an Infant brown Capuchin Monkey (*Cebus apella*) in the Brazilian Amazon. *Rev. Bras. Ornitol.* 18, 352–354
- Bender, D.J., Contreras, T.A., Fahrig, L., 1998. Habitat loss and population decline: a meta-analysis of the patch size effect. *Ecology* 72(2), 517–533. doi:10.2307/176950

464 Boudou, A., Maury-Brachet, R., Coquery, M., Durrieu, G., Cossa, D., 2005. Synergic Effect of Gold  
465 Mining and Damming on Mercury Contamination in Fish. *Environ. Sci. Technol.* 39, 2448-  
466 2454. doi:10.1021/es049149r

467 Brown, J.H., Kodric-Brown, A., 1977. Turnover Rates in Insular Biogeography: Effect of  
468 Immigration on Extinction. *Ecology* 58, 445–449. doi:10.2307/1935620

469 Bunnefeld, N., Phillimore, A.B., 2012. Island, archipelago and taxon effects: mixed models as a  
470 means of dealing with the imperfect design of nature's experiments. *Ecography* 35, 15-22. doi:  
471 10.1111/j.1600-0587.2011.07078.x

472 Castello, L., McGrath, D.G., Hess, L.L., Coe, M.T., Lefebvre, P. A., Petry, P., Macedo, M.N., Renó,  
473 V.F., Arantes, C.C., 2013. The vulnerability of Amazon freshwater ecosystems. *Conserv. Lett.* 6,  
474 217–229. doi:10.1111/conl.12008

475 Chauvet, S., Forget, P.-M., 2005. Edge effects on post-dispersal seed removal in a fragmented rain  
476 forest in French Guiana. *J. Trop. Ecol.* 21, 113–116. doi:10.1017/S0266467404001944

477 Connor, E.F., McCoy, E.D., 1979. The Statistics and Biology of the Species-Area Relationship. *Am.*  
478 *Nat.* 113, 791–833. doi:10.1086/283438

479 Cosson, J., Pons, J.-M., Masson, D., 1999a. Effects of forest fragmentation on frugivorous and  
480 nectarivorous bats in French Guiana. *J. Trop. Ecol.* 15, 515–534

481 Cosson, J.F., Ringuet, S., Claessens, O., de Massary, J.C., Daleky, A., Villiers, J.F., Granjon, L.,  
482 Pons, J.M., 1999b. Ecological changes in recent land-bridge islands in French Guiana, with  
483 emphasis on vertebrate communities. *Biol. Conserv.* 91, 213-222. doi:10.1016/S0006-  
484 3207(99)00091-9

485 Crawley, M.J., 2005. *Statistics: an introduction using R*. John Wiley & Sons Ltd, Chichester

486 Crawley, M.J., Haral, J.E., 2001. Scale dependence in plant biodiversity. *Science* 291, 864–868.  
487 doi:10.1126/science.291.5505.864

488 Demarty, M., Bastien, J., 2011. GHG emissions from hydroelectric reservoirs in tropical and  
489 equatorial regions - review of 20 years of CH<sub>4</sub> emission measurements. *Energy Policy* 39, 4197–  
490 4206. doi:10.1016/j.enpol.2011.04.033

491 Develey, P.F., Stouffer, P.C., 2001. Effects of Roads on Movements by Understory Birds in Mixed-  
492 Species Flocks in Central Amazonian Brazil. *Conserv. Biol.* 15, 1416–1422. doi:10.1111/j.1523-  
493 1739.2001.00170.x

494 Diamond, J.M., 1972. Biogeographic Kinetics: Estimation of Relaxation Times for Avifaunas of  
495 Southwest Pacific Islands. *Proc. Natl. Acad. Sci. USA* 69, 3199–3203.  
496 doi:10.1073/pnas.69.11.3199

497 Diamond, J.M., 2001. Dammed Experiments! *Science* 294, 1847–1848.  
498 doi:10.1126/science.1067012

499 EIA, 2013. *International Energy Outlook 2013*. U.S. Energy Information Administration, Office of  
500 Energy Analysis, U.S. Department of Energy, Washington, DC 20585

501 Emer, C., Venticinque, E.M., Fonseca, C.R., 2013. Effects of dam-induced landscape fragmentation  
502 on Amazonian ant-plant mutualistic networks. *Conserv. Biol.* 27, 763–73.  
503 doi:10.1111/cobi.12045

504 Ewers, R.M., Didham, R.K., 2006. Confounding factors in the detection of species responses to  
505 habitat fragmentation. *Biol. Rev.* 81, 117–42. doi:10.1017/S1464793105006949

506 Fahrig, L., 2003. Effects of Habitat Fragmentation on Biodiversity. *Annu. Rev. Ecol. Syst.* 34, 487–  
507 515. doi:10.1146/132419

508 Fearnside, P.M., 1999. Social Impacts of Brazil's Tucuruí Dam. *Environ. Manage.* 24, 483–495. doi:  
509 10.1007/s002679900248

510 Fearnside, P.M., 2002. Greenhouse Gas Emissions from a Hydroelectric Reservoir (Brazil's Tucuruí  
511 Dam) and the Energy Policy Implications. *Water. Air. Soil Pollut.* 133, 69–96. doi:  
512 10.1023/A:1012971715668

513 Fearnside, P.M., 2009. Hydroelectric Dams in the Brazilian Amazon as Sources of 'Greenhouse'  
514 Gases. *Environ. Conserv.* 22(1), 7–19. doi: 10.1017/S0376892900034020

515 Fearnside, P.M., Pueyo, S., 2012. Greenhouse-gas emissions from tropical dams. *Nat. Clim. Chang.* 2,  
516 382–384. doi:10.1038/nclimate1540

517 Feeley, K.J., Gillespie, T.W., Lebbin, D.J., Walter, H.S., 2007. Species characteristics associated with  
518 extinction vulnerability and nestedness rankings of birds in tropical forest fragments. *Anim.*  
519 *Conserv.* 10, 493–501. doi:10.1111/j.1469-1795.2007.00140.x

520 Feeley, K.J., Terborgh, J.W., 2006. Habitat Fragmentation and Effects of Herbivore (Howler Monkey)  
521 Abundances on Bird Species Richness. *Ecology* 87, 144–150. doi:10.1890/05-0652

522 Feer, F., Hingrat, Y., 2005. Effects of Forest Fragmentation on a Dung Beetle Community in French  
523 Guiana. *Conserv. Biol.* 19, 1103–1112. doi:10.1111/j.1523-1739.2005.00087.x

524 Ferreira, L. V, Neckel-Oliveira, S., Galatti, U., Fáveri, S.B., Parolin, P., 2012. Forest structure of  
525 artificial islands in the Tucuruí dam reservoir in northern Brazil: a test core-area model. *Acta*  
526 *Amaz.* 42, 221–226

527 Finer, M., Jenkins, C.N., 2012. Proliferation of hydroelectric dams in the Andean Amazon and  
528 implications for Andes-Amazon connectivity. *PLoS One* 7, e35126.  
529 doi:10.1371/journal.pone.0035126

530 Finer, M., Jenkins, C.N., Pimm, S.L., Keane, B., Ross, C., 2008. Oil and gas projects in the Western  
531 Amazon: Threats to Wilderness, Biodiversity and Indigenous Peoples. *PLoS One* 3, e2932.  
532 doi:10.1371/journal.pone.0002932

533 Forman, T.T., 1995. Land mosaics: the ecology of landscapes and regions. Cambridge University  
534 Press, Cambridge.

535 Gibson, L., Lynam, A.J., Bradshaw, C.J.A, He, F., Bickford, D.P., Woodruff, D.S., Bumrungsri, S.,  
536 Laurance, W.F., 2013. Near-complete extinction of native small mammal fauna 25 years after  
537 forest fragmentation. *Science* 341, 1508–10. doi:10.1126/science.1240495

538 Gonzalez, A., 2000. Community relaxation in fragmented landscapes: the relation between species  
539 richness, area and age. *Ecol. Lett.* 3, 441–448. doi:10.1046/j.1461-0248.2000.00171.x

540 Google, 2015. Google Earth Pro. URL: <http://www.google.co.uk/earth/download/gep/agree.html>  
541 [Accessed 21/12/15]

542 Halley, J.M., Sgardeli, V., Triantis, K.A., 2014. Extinction debt and the species-area relationship: a  
543 neutral perspective. *Glob. Ecol. Biogeogr.* 23, 113–123. doi:10.1111/geb.12098

544 Hanski, I., Gilpin, M., 1991. Metapopulation dynamics: brief history and conceptual domain. *Biol. J.*  
545 *Linn. Soc.* 42, 3–16. doi:10.1111/j.1095-8312.1991.tb00548.x

546 Hanski, I., Ovaskainen, O., 2000. The metapopulation capacity of a fragmented landscape. *Nature*  
547 404, 755–758. doi: doi:10.1038/35008063

548 Hanski, I., Ovaskainen, O., 2002. Extinction Debt at Extinction Threshold. *Conserv. Biol.* 16, 666–  
549 673. doi:10.1046/j.1523-1739.2002.00342.x

550 ICOLD, 2016. International Commission on Large Dams. URL: <http://www.icold-cigb.org/> [Accessed  
551 21/03/16]

552 International Energy Agency, 2000. Hydropower and the Environment: Effectiveness of Mitigation  
553 Measures. IEA Technical Report, Annex III – Subtask 6

554 International Energy Agency, 2006. Annex VIII, Hydropower Good Practices: Environmental  
555 Mitigation Measures and Benefits. New Energy Foundation, Japan

556 Kareiva, P.M., 2012. Dam choices: Analyses for multiple needs. *Proc. Natl. Acad. Sci.* 109, 5553–  
557 5554. doi:10.1073/pnas.1203263109

558 Kirby, K.R., Laurance, W.F., Albernaz, A.K., Schroth, G., Fearnside, P.M., Bergen, S., Venticinque,  
559 E.M., da Costa, C., 2006. The future of deforestation in the Brazilian Amazon. *Futures* 38, 432–  
560 453. doi:10.1016/j.futures.2005.07.011

561 Kitzen, J., Harte, J., 2015. Predicting extinction debt from community patterns. *Ecology* 96(8), 2127–  
562 2136. doi:10.1890/14-1594.1

563 Kuussaari, M., Bommarco, R., Heikkinen, R.K., Helm, A., Krauss, J., Lindborg, R., Öckinger, E.,  
564 Pärtel, M., Pino, J., Rodà, F., Stefanescu, C., Teder, T., Zobel, M., Steffan-Dewenter, I., 2009.  
565 Extinction debt: a challenge for biodiversity conservation. *Trends Ecol. Evol.* 24, 564–571.  
566 doi:10.1016/j.tree.2009.04.011

567 Lambert, T.D., Adler, G.H., Riveros, C.M., Lopez, L., Ascanio, R., Terborgh, J., 2003. Rodents on  
568 tropical land-bridge islands. *J. Zool.* 260, 179–187. doi:10.1017/S0952836903003637

569 Laurance, S.G.W., Stouffer, P.C., Laurance, W.F., 2004. Effects of road clearings on movement  
570 patterns of understory rainforest birds in central Amazonia. *Conserv. Biol.* 18, 1099–1109.  
571 doi:10.1111/j.1523-1739.2004.00268.x

572 Laurance, W., 2008. Theory meets reality: How habitat fragmentation research has transcended island  
573 biogeographic theory. *Biol. Conserv.* 141, 1731–1744. doi:10.1016/j.biocon.2008.05.011

574 Lees, A.C., Peres, C.A., Fearnside, P.M., Schneider, M., Zuanon, J.A.S., 2016. Hydropower and the  
575 future of Amazonian biodiversity. *Biodivers. Conserv.* 25(3), 451–466. doi:10.1007/s10531-016-  
576 1072-3

577 Leigh, E.G., Wright, S.J., Herre, E.A., Putz, F.E., 1993. The decline of tree diversity on newly  
578 isolated tropical islands: a test of a null hypothesis and some implications. *Evol. Ecol.* 7, 76–99.  
579 doi:10.1007/BF01237735

580 Lomolino, M. V., 2000. A call for a new paradigm of island biogeography. *Glob. Ecol. Biogeogr.* 9,  
581 1–6. doi:10.1046/j.1365-2699.2000.00185.x

582 Lopez, L., Terborgh, J., 2007. Seed predation and seedling herbivory as factors in tree recruitment  
583 failure on predator-free forested islands. *J. Trop. Ecol.* 23, 129.  
584 doi:10.1017/S0266467406003828

585 MacArthur, R.H., Wilson, E.O., 1963. An equilibrium theory of insular zoogeography. *Evolution* 17,  
586 373–387. doi:10.2307/2407089

587 MacArthur, R.H., Wilson, E.O., 1967. *The theory of island biogeography*. Princeton University Press,  
588 Princeton

589 Mendenhall, C.D., Karp, D.S., Meyer, C.F.J., Hadly, E. A, Daily, G.C., 2014. Predicting biodiversity  
590 change and averting collapse in agricultural landscapes. *Nature* 509, 213–7.  
591 doi:10.1038/nature13139

592 Mendenhall, C.D., Sekercioglu, C.H., Oviedo Brenes, F., Ehrlich, P.R., Daily, G.C., 2011. Predictive  
593 model for sustaining biodiversity in tropical countryside. *Proc. Natl. Acad. Sci. U. S. A.* 108,  
594 16313–6. doi:10.1073/pnas.1111687108

595 Moore, R.P., Robinson, W.D., Lovette, I.J., Robinson, T.R., 2008. Experimental evidence for extreme  
596 dispersal limitation in tropical forest birds. *Ecol Lett* 11, 960–968. doi:10.1111/j.1461-  
597 0248.2008.01196.x

598 Murcia, C., 1995. Edge effects in fragmented forests: implications for conservation. *Trends Ecol.*  
599 *Evol.* 10, 58–62. doi:10.1016/S0169-5347(00)88977-6

600 Nilsson, C., Reidy, C. A., Dynesius, M., Revenga, C., 2005. Fragmentation and flow regulation of the  
601 world's large river systems. *Science* 308, 405–8. doi:10.1126/science.1107887

602 Oki, T., Kanae, S., 2006. Global Hydrological Cycles and World Water Resources. *Science* 313,  
603 1068–1072. doi:10.1126/science.1128845

604 Palmeirim, A.F., Peres, C. A., Rosas, F.C.W., 2014. Giant otter population responses to habitat  
605 expansion and degradation induced by a mega hydroelectric dam. *Biol. Conserv.* 174, 30–38.  
606 doi:10.1016/j.biocon.2014.03.015

607 Peres, C. A., 2001. Synergistic Effects of Subsistence Hunting and Habitat Fragmentation on  
608 Amazonian Forest Vertebrates. *Conserv. Biol.* 15, 1490–1505. doi:10.1046/j.1523-  
609 1739.2001.01089.x

610 Peres, C. A., Lake, I.R., 2003. Extent of Nontimber Resource Extraction in Tropical Forests:  
611 Accessibility to Game Vertebrates by Hunters in the Amazon Basin. *Conserv. Biol.* 17, 521–  
612 535. doi:10.1046/j.1523-1739.2003.01413.x

Pinheiro, J.C., Bates, D.M., 2000. *Mixed-effects Models in S and S-Plus*. Springer, New York. doi: 10.1007/b98882

R Core Team, 2015. R: A Language and Environment for Statistical Computing. URL: <https://www.r-project.org/> [Accessed 21/12/15]

Robinson, W.D., 1999. Long-Term Changes in the Avifauna of Barro Colorado Island, Panama, a Tropical Forest Isolate. *Conserv. Biol.* 13, 85–97. doi:10.1046/j.1523-1739.1999.97492.x

Sá-Oliveira, J.C., Hawes, J.E., Isaac-Nahum, V.J., Peres, C. A., 2015. Upstream and downstream responses of fish assemblages to an eastern Amazonian hydroelectric dam. *Freshw. Biol.* 60, 2037–2050. doi:10.1111/fwb.12628

Seabloom, E.W., Dobson, A.P., Stoms, D.M., 2002. Extinction rates under nonrandom patterns of habitat loss. *Proc. Natl. Acad. Sci.* 99, 11229–11234. doi:10.1073/pnas.162064899

Terborgh, J., Lopez, L., Nuñez, P., Rao, M., Shahabuddin, G., Orihuela, G., Riveros, M., Ascanio, R., Adler, G.H., Lambert, T.D., Balbas, L., 2001. Ecological meltdown in predator-free forest fragments. *Science* 294, 1923–6. doi:10.1126/science.1064397

Terborgh, J., Lopez, L., Tello, J., Yu, D., Bruni, A.R., 1997. Transitory states in Relaxing Ecosystems of Land Bridge Islands, in: Laurance, W.F., Bierregaard, R.O. (Eds.), *Tropical Forest Remnants: Ecology, Management, and Conservation of Fragmented Communities*. University of Chicago Press, London, pp. 256–274

Tilman, D., May, R.M., Lehman, C.L., Nowak, M.A., 1994. Habitat destruction and the extinction debt. *Nature* 371, 65–66. doi:10.1038/371065a0

Triantis, K.A., Guilhaumon, F., Whittaker, R.J., 2012. The island species-area relationship: biology and statistics. *J. Biogeogr.* 39, 215–231. doi:10.1111/j.1365-2699.2011.02652.x

Trussart, S., Messier, D., Roquet, V., Aki, S., 2002. Hydropower projects: A review of most effective mitigation measures. *Energy Policy* 30, 1251–1259. doi:10.1016/S0301-4215(02)00087-3

Turner, I.M., 1996. Species loss in fragments of tropical rain forest: a review of the evidence. *J. Appl. Ecol.* 33(2), 200–209. doi:10.2307/2404743

Wang, Y., Zhang, J., Feeley, K.J., Jiang, P., Ding, P., 2009. Life-history traits associated with fragmentation vulnerability of lizards in the Thousand Island Lake, China. *Anim. Conserv.* 12, 329–337. doi:10.1111/j.1469-1795.2009.00257.x

Watson, D.M., 2002. A conceptual framework for studying species composition in fragments, islands and other patchy ecosystems. *J. Biogeogr.* 29, 823–834. doi:10.1046/j.1365-2699.2002.00726.x

WCD, 2000. *Dams and Development: A new framework for decision-making*. World Commission on Dams. Earthscan Publications Ltd, London and Sterling, VA

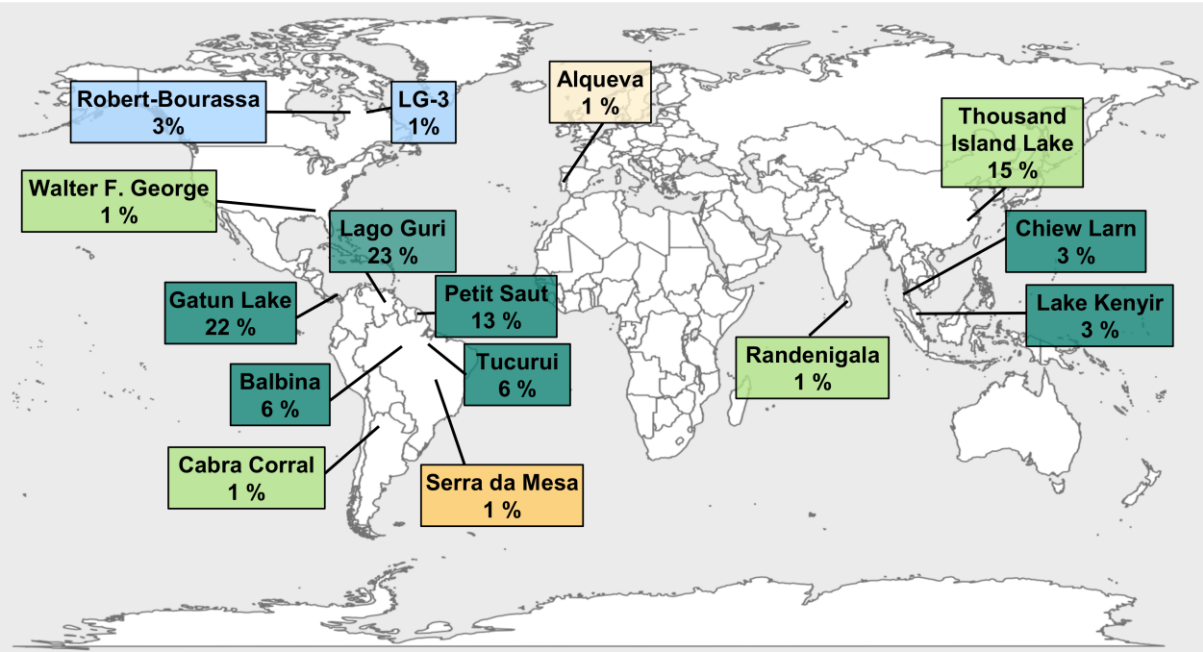
Wearn, O.R., Reuman, D.C., Ewers, R.M., 2012. Extinction Debt and Windowns of Conservation Opportunity in the Brazilian Amazon. *Science* 337, 228–232. doi:10.1126/science.1219013

With, K. A., King, A.W., 2001. Analysis of landscape sources and sinks: The effect of spatial pattern on avian demography. *Biol. Conserv.* 100, 75–88. doi:10.1016/S0006-3207(00)00209-3

650 Yu, M., Hu, G., Feeley, K.J., Wu, J., Ding, P., 2012. Richness and composition of plants and birds on  
651 land-bridge islands: effects of island attributes and differential responses of species groups. *J.*  
652 *Biogeogr.* 39, 1124-1133. doi:10.1111/j.1365-2699.2011.02676.x

653

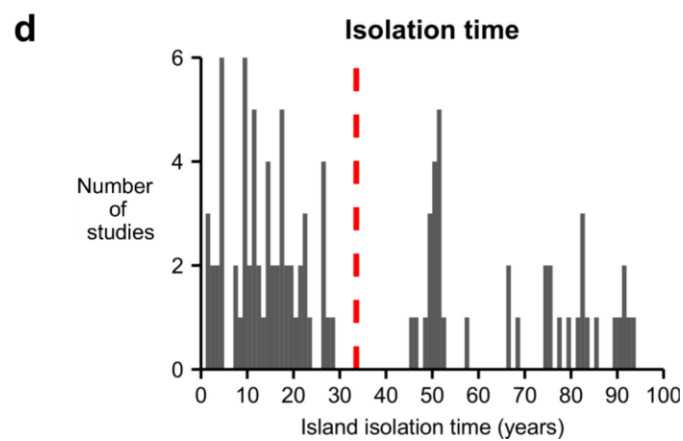
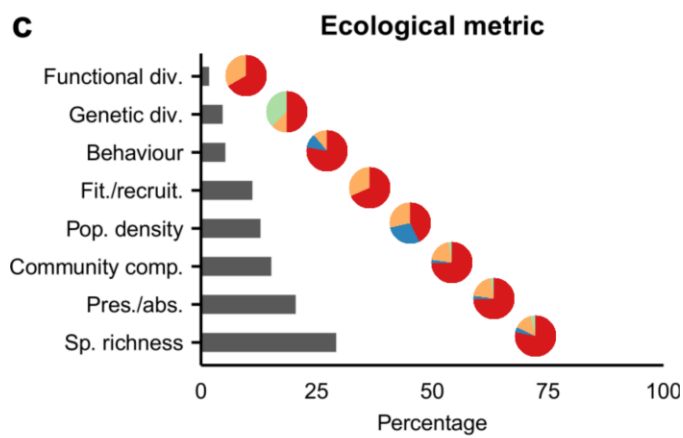
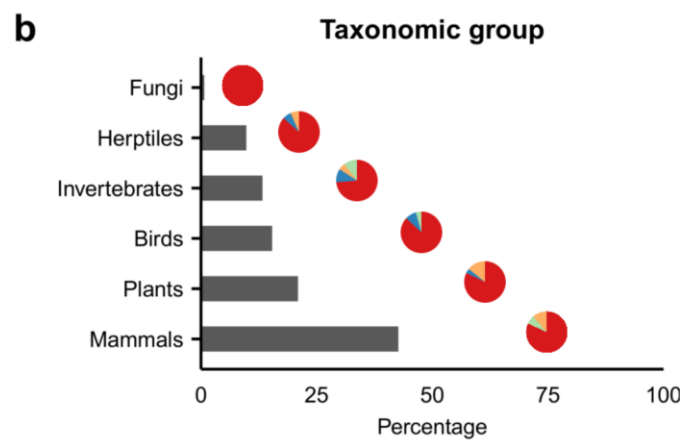
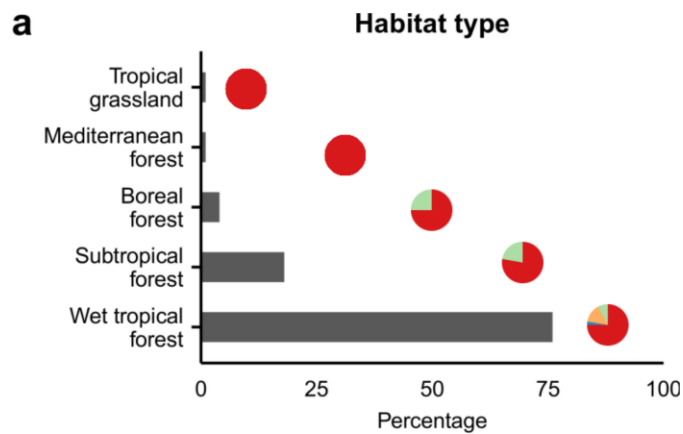




655  
656 **Figure 1:** Geography of research detailing responses of terrestrial taxa to isolation on  
657 reservoir land-bridge islands. Dam names and the percentage of total dataset studies (n = 100)  
658 originating from each are presented. Broad habitat type is indicated by colour: dark green =  
659 wet tropical forest; light green = subtropical forest; yellow = tropical grassland (e.g. *cerrado*);  
660 cream = Mediterranean forest; blue = boreal forest.

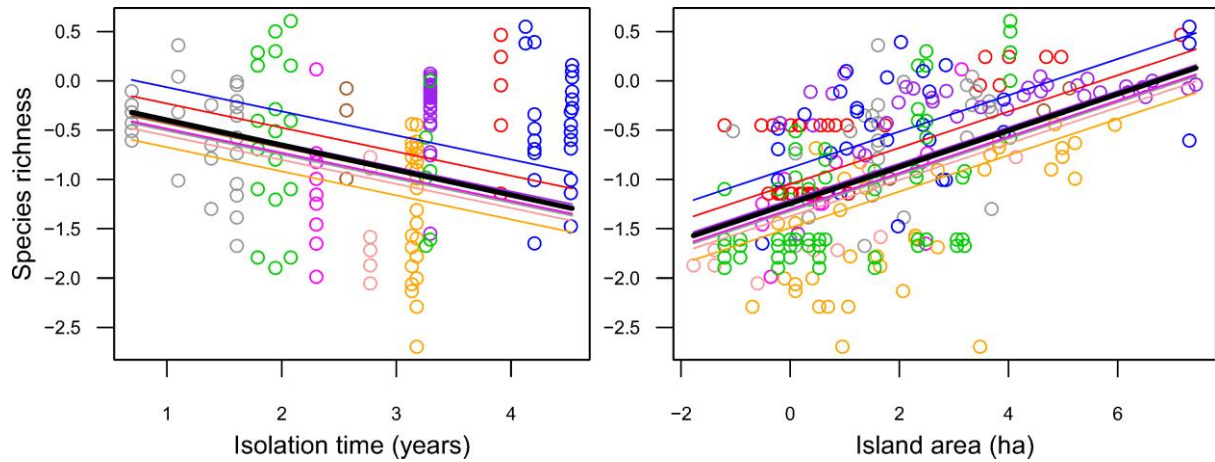
661 [2 column fitting]

662



**Figure 2:** Overview of research presented within dataset studies (n=100). 2a-c) present the proportion of total studies (black bars) for habitat type, ecological metric and taxonomic group investigated respectively; pie charts represent overall response directions (red = negative; blue = positive; green = neutral; yellow = variable). 2d) presents the distribution of studies through island isolation time (red dashed line represents mean island isolation time, ~33 years).

**[Single column fitting]**



**Figure 3:** Analysis of species richness ( $S_{\text{RICH}}$ ) data from 249 islands and 84 control sites available from nine dams in three broad habitat types (wet tropical forest, subtropical forest, and tropical grassland), modelled with time since island isolation ( $T_{\text{ISO}}$ ) and island area (AREA). Bold black lines represent the slope for the overall model, with individual lines for each dam fitted using the BLUPs extracted from random effects. Colour indicates dam identity: grey = Petit Saut; green = Chiew Larn; magenta = Lago Guri; brown = Randenigala; light pink = Cabra Corral; orange = Lake Kenyir; purple = Balbina; red = Thousand Island Lake; blue = Gatun Lake. Axes are on a natural log scale.

[2 column fitting]

**Table 1:** Coefficient estimates for fixed effects in the most parsimonious model used for species richness analysis, with TAXA, DAM and STUDY as random effects; t-values >2 were treated as significant.

	Estimate	Standard Error	t-value
Intercept	-0.514	0.237	-2.168
AREA	0.185	0.015	11.944
$T_{\text{ISO}}$	-0.244	0.067	-3.641

[Single column fitting]

688 **APPENDIX A1**

689 **Full reference list for Appendix A**

- 690 Adler, G.H., 1994. Tropical forest fragmentation and isolation promote asynchrony among  
691 populations of a frugivorous rodent. *J. Anim. Ecol.* 63, 903–911
- 692 Adler, G.H., Beatty, R.P., 1997. Changing reproductive rates in a Neotropical forest rodent,  
693 *Proechimys semispinosus*. *J. Anim. Ecol.* 66, 472–480
- 694 Adler, G.H., Seamon, J.O., 1991. Distribution and abundance of a tropical rodent, the spiny  
695 rat, on islands in Panama. *J. Trop. Ecol.* 7, 349–360. doi:10.1017/S0266467400005617
- 696 Aponte, C., Barreto, G.R., Terborgh, J., 2003. Consequences of Habitat Fragmentation on  
697 Age Structure and Life History in a Tortoise Population. *Biotropica* 35, 550–555
- 698 Arnold, A.E., Asquith, N.M., 2002. Herbivory in a fragmented tropical forest: patterns from  
699 islands at Lago Gatun, Panama. *Biodivers. Conserv.* 11, 1663–1680
- 700 Asquith, N.M., Mejía-Chang, M., 2005. Mammals , Edge Effects , and the Loss of Tropical  
701 Forest Diversity. *Ecology* 86, 379–390
- 702 Asquith, N.M., Terborgh, J., Arnold, A.E., Riveros, C.M., 1999. The fruits the agouti ate:  
703 *Hymenaea courbaril* seed fate when its disperser is absent. *J. Trop. Ecol.* 15, 229–235
- 704 Asquith, N.M., Wright, S.J., Clauss, M.J., 1997. Does mammal community composition  
705 control recruitment in neotropical forests? Evidence from Panama. *Ecology* 78, 941–946
- 706 Badano, E.I., Regidor, H.A., Nunez, H.A., Acosta, R., Gianoli, E., 2005. Species richness and  
707 structure of ant communities in a dynamic archipelago: effects of island area and age. *J.*  
708 *Biogeogr.* 32, 221–227
- 709 Bastos, H.B., Gonçalves, E.C., Ferrari, S.F., Silva, A., Schneider, M.P.C., 2010. Genetic  
710 structure of red-handed howler monkey populations in the fragmented landscape of  
711 Eastern Brazilian Amazonia. *Genet. Mol. Biol.* 33, 774–80
- 712 Bégin, Y., Sirois, L., Meunier, C., 2010. The effects of hydroelectric flooding on a reservoir's  
713 peripheral forests and newly created forest islands, in: Stoffel, M., Bollschweiler, M.,  
714 Butler, D.R., Luckman, B.H. (Eds.), *Tree Rings and Natural Hazards: A State-of-the-*  
715 *Art, Advances in Global Change Research.* Springer Netherlands, Dordrecht, pp. 241–  
716 256. doi:10.1007/978-90-481-8736-2
- 717 Benchimol, M., Peres, C.A, 2015a. Edge-mediated compositional and functional decay of  
718 tree assemblages in Amazonian forest islands after 26 years of isolation. *J. Ecol.* 103,  
719 408–420. doi:10.1111/1365-2745.12371
- 720 Benchimol, M., Peres, C.A, 2015b. Predicting local extinctions of Amazonian vertebrates in  
721 forest islands created by a mega dam. *Biol. Conserv.* 187, 61–72.  
722 doi:10.1016/j.biocon.2015.04.005

- 723 Benchimol, M., Peres, C.A., 2015c. Widespread Forest Vertebrate Extinctions Induced by a  
724 Mega Hydroelectric Dam in Lowland Amazonia. PLoS One 1–15.  
725 doi:10.5061/dryad.c301h
- 726 Benchimol, M., Venticinque, E.M., 2014. Responses of Primates to Landscape Change in  
727 Amazonian Land-bridge islands-a Multi-scale Analysis. Biotropica 0, 1–9.  
728 doi:10.1111/btp.12122
- 729 Benchimol, M., Venticinque, E.M., 2010. Harpy Eagle (*Harpia harpyja*) predation on an  
730 Infant brown Capuchin Monkey (*Cebus apella*) in the Brazilian Amazon. Rev. Bras.  
731 Ornitol. 18, 352–354
- 732 Boyett, W.D., Endries, M.J., Adler, G.H., 2000. Colonization-extinction dynamics of  
733 opossums on small islands in Panama. Can. J. Zool. 78, 1972–1979
- 734 Brandão, R., Araújo, A., 2008. Changes in Anuran Species Richness and Abundance  
735 Resulting from Hydroelectric Dam Flooding in Central Brazil. Biotropica 40, 263–266
- 736 Carvalho, L.S., Gomes, J.O., Neckel-Oliveira, S., Lo-Man-Hung, N.F., 2012. Microhabitat  
737 use and intraspecific associations in the whip spider *Heterophrynus longicornis*  
738 (Arachnida: Amblypygi ) in forest fragments formed by the Tucuruí Dam lake , Pará ,  
739 Brazil 46, 1263–1272
- 740 Cosson, J., Pons, J.M., Masson, D., 1999. Effects of forest fragmentation on frugivorous and  
741 nectarivorous bats in French Guiana. J. Trop. Ecol. 15, 515–534
- 742 Cosson, J.F., Ringuet, S., Claessens, O., de Massary, J.C., Dalecky, A., Villiers, J.F.,  
743 Granjon, L., Pons, J.M., 1999. Ecological changes in recent land-bridge islands in  
744 French Guiana, with emphasis on vertebrate communities. Biol. Conserv. 91, 213–222.  
745 doi:10.1016/S0006-3207(99)00091-9
- 746 Crete, M., Huot, J., Fortin, M.-J., Doucet, G., 1997. Comparison of plant and animal diversity  
747 on new reservoir islands and established lake islands in Northern Boreal Forest of  
748 Quebec. Can. field-naturalist 111, 407–416
- 749 Daleky, A., Chauvet, S., Ringuet, S., Claessens, O., Juda, J., Larue, M., Cosson, J.F., 2002.  
750 Large mammals on small islands: short-term effects of forest fragmentation on the large  
751 mammal fauna in French Guiana. Rev. d'écologie 57, 145–164
- 752 Davies, R., 2002. Feeding group responses of a Neotropical termite assemblage to rain forest  
753 fragmentation. Oecologia 133, 233–242. doi:10.1007/s00442-002-1011-8
- 754 Davies, R.G., Hernández, L.M., Eggleton, P., Didham, R.K., Fagan, L.L., Winchester, N.N.,  
755 2003. Environmental and spatial influences upon species composition of a termite  
756 assemblage across neotropical forest islands. J. Trop. Ecol. 19, 509–524.  
757 doi:10.1017/S0266467403003560
- 758 Ding, Z., Feeley, K.J., Wang, Y., Pakeman, R.J., Ding, P., 2013. Patterns of bird functional  
759 diversity on land-bridge island fragments. J. Anim. Ecol. 781–790. doi:10.1111/1365-  
760 2656.12046

761 Emer, C., Venticinque, E.M., Fonseca, C.R., 2013. Effects of dam-induced landscape  
762 fragmentation on amazonian ant-plant mutualistic networks. *Conserv. Biol.* 27, 763–73.  
763 doi:10.1111/cobi.12045

764 Ennen, J.R., Birkhead, R.D., Kreiser, B.R., Gaillard, D.L., Qualls, C.P., Lovich, J.E., 2011.  
765 The effects of isolation on the demography and genetic diversity of long-lived species:  
766 implications for conservation and management of the gopher tortoise (*Gopherus*  
767 *polyphemus*). *Herpetol. Conserv. Biol.* 6, 202–214.

768 Estrada-Villegas, S., Meyer, C.F.J., Kalko, E.K.V., 2010. Effects of tropical forest  
769 fragmentation on aerial insectivorous bats in a land-bridge island system. *Biol. Conserv.*  
770 143, 597–608. doi:10.1016/j.biocon.2009.11.009

771 Feeley, K., 2003. Analysis of avian communities in Lake Guri, Venezuela, using multiple  
772 assembly rule models. *Oecologia* 137, 104–13. doi:10.1007/s00442-003-1321-5

773 Feeley, K.J., Gillespie, T.W., Lebbin, D.J., Walter, H.S., 2007. Species characteristics  
774 associated with extinction vulnerability and nestedness rankings of birds in tropical  
775 forest fragments. *Anim. Conserv.* 10, 493–501. doi:10.1111/j.1469-1795.2007.00140.x

776 Feeley, K.J., Terborgh, J.W., 2008. Direct versus indirect effects of habitat reduction on the  
777 loss of avian species from tropical forest fragments. *Anim. Conserv.* 11, 353–360.  
778 doi:10.1111/j.1469-1795.2008.00182.x

779 Feeley, K.J., Terborgh, J.W., 2006. Habitat Fragmentation and Effects of Herbivore (Howler  
780 Monkey) Abundances on Bird Species Richness. *Ecology* 87, 144–150

781 Feeley, K.J., Terborgh, J.W., 2005. The Effects of Herbivore Density on Soil Nutrients and  
782 Tree Growth in Tropical Forest Fragments. *Ecology* 86, 116–124

783 Feer, F., Hingrat, Y., 2005. Effects of Forest Fragmentation on a Dung Beetle Community in  
784 French Guiana. *Conserv. Biol.* 19, 1103–1112. doi:10.1111/j.1523-1739.2005.00087.x

785 Ferreira, L. V., Neckel-Oliveira, S., Galatti, U., Fáveri, S.B., Parolin, P., 2012. Forest  
786 structure of artificial islands in the Tucuruí dam reservoir in northern Brazil: a test core-  
787 area model. *Acta Amaz.* 42, 221–226.

788 Gibson, L., Lynam, A.J., Bradshaw, C.J. A., He, F., Bickford, D.P., Woodruff, D.S.,  
789 Bumrungsri, S., Laurance, W.F., 2013. Near-complete extinction of native small  
790 mammal fauna 25 years after forest fragmentation. *Science* 341, 1508–10.  
791 doi:10.1126/science.1240495

792 Granjon, L., Cosson, J., Judas, J., Ringlet, S., 1996. Influence of tropical rainforest  
793 fragmentation on mammal communities in French Guiana: short-term effects. *Acta*  
794 *Oecologica* 17, 673–672

795 Granjon, L., Ringlet, S., Cheylan, G., 2002. Evolution of small terrestrial mammal species  
796 richness on newly formed islands in primary tropical forest of French Guiana: a 6 year  
797 study. *Rev. d'écologie* 8, 131–144.



798 Henry, M., Cosson, J.F., Pons, J.M., 2010. Modelling multi-scale spatial variation in species  
799 richness from abundance data in a complex neotropical bat assemblage. *Ecol. Modell.*  
800 221, 2018–2027. doi:10.1016/j.ecolmodel.2010.05.011

801 Henry, M., Cosson, J.-F., Pons, J.-M., 2007a. Abundance may be a misleading indicator of  
802 fragmentation-sensitivity: The case of fig-eating bats. *Biol. Conserv.* 139, 462–467.  
803 doi:10.1016/j.biocon.2007.06.024

804 Henry, M., Pons, J.-M., Cosson, J.-F., 2007b. Foraging behaviour of a frugivorous bat helps  
805 bridge landscape connectivity and ecological processes in a fragmented rainforest. *J.*  
806 *Anim. Ecol.* 76, 801–13. doi:10.1111/j.1365-2656.2007.01258.x

807 Hu, G., Feeley, K.J., Wu, J., Xu, G., Yu, M., 2011. Determinants of plant species richness  
808 and patterns of nestedness in fragmented landscapes: evidence from land-bridge islands.  
809 *Landsc. Ecol.* 26, 1405–1417. doi:10.1007/s10980-011-9662-7

810 Hu, G., Wu, J., Feeley, K.J., Xu, G., Yu, M., 2012. The effects of landscape variables on the  
811 species-area relationship during late-stage habitat fragmentation. *PLoS One* 7, e43894.  
812 doi:10.1371/journal.pone.0043894

813 Karr, J.R., 1990. Avian Survival Rates and the Extinction Process on Barro Colorado Island,  
814 Panama Island. *Conserv. Biol.* 4, 391–397

815 Karr, J.R., 1982a. Population Variability and Extinction in the Avifauna of a Tropical Land  
816 Bridge Island. *Ecology* 63, 1975–1978

817 Karr, J.R., 1982b. Avian Extinction on Barro Colorado Island, Panama: A Reassessment.  
818 *Am. Nat.* 119, 220–239

819 Lambert, T.D., Adler, G.H., Riveros, C.M., Lopez, L., Ascanio, R., Terborgh, J., 2003.  
820 Rodents on tropical land-bridge islands. *J. Zool.* 260, 179–187.  
821 doi:10.1017/S0952836903003637

822 Larsen, T.H., Lopera, A., Forsyth, A., 2008. Understanding trait-dependent community  
823 disassembly: dung beetles, density functions, and forest fragmentation. *Conserv. Biol.*  
824 22, 1288–98. doi:10.1111/j.1523-1739.2008.00969.x

825 Larsen, T.H., Williams, N.M., Kremen, C., 2005. Extinction order and altered community  
826 structure rapidly disrupt ecosystem functioning. *Ecol. Lett.* 8, 538–47.  
827 doi:10.1111/j.1461-0248.2005.00749.x

828 Leigh, E.G., Wright, S.J., Herre, E.A., Putz, F.E., 1993. The decline of tree diversity on  
829 newly isolated tropical islands: a test of a null hypothesis and some implications. *Evol.*  
830 *Ecol.* 7, 76–99.

831 Lima, J., Galatti, U., Lima, C., Faveri, S., Vasconcelos, H., Neckel-Oliveira, S., 2015.  
832 Amphibians on Amazonian Land-Bridge Islands are Affected More by Area Than  
833 Isolation. *Biotropica* 47, 369–376

- 834 Lopez, G.O., Terborgh, J., Ceballos, N., 2005. Food selection by a hyperdense population of  
835 red howler monkeys (*Alouatta seniculus*). J. Trop. Ecol. 21, 445–450.  
836 doi:10.1017/S0266467405002415
- 837 Lopez, L., Terborgh, J., 2007. Seed predation and seedling herbivory as factors in tree  
838 recruitment failure on predator-free forested islands. J. Trop. Ecol. 23, 129.  
839 doi:10.1017/S0266467406003828
- 840 Lu, J., Jiang, L., Yu, L., Sun, Q., 2011. Local factors determine plant community structure on  
841 closely neighbored islands. PLoS One 6, e19762. doi:10.1371/journal.pone.0019762
- 842 Lynam, A.J., 1997. Rapid decline of small mammal diversity in Monsoon evergreen  
843 fragments in Thailand, in: Tropical Forest Remnants: Ecology, Management, and  
844 Conservation of Fragmented Communities. pp. 222–240
- 845 Lynam, A.J., Billick, I., 1999. Differential responses of small mammals to fragmentation in a  
846 Thailand tropical forest. Biol. Conserv. 91, 191–200
- 847 Mangan, S.A., Eom, A.-H., Adler, G.H., Yavitt, J.B., Herre, E.A., 2004. Diversity of  
848 arbuscular mycorrhizal fungi across a fragmented forest in Panama: insular spore  
849 communities differ from mainland communities. Oecologia 141, 687–700.  
850 doi:10.1007/s00442-004-1684-2
- 851 Meyer, C.F.J., Kalko, E.K. V., 2008a. Assemblage-level responses of phyllostomid bats to  
852 tropical forest fragmentation: land-bridge islands as a model system. J. Biogeogr. 35,  
853 1711–1726. doi:10.1111/j.1365-2699.2008.01916.x
- 854 Meyer, C.F.J., Kalko, E.K. V., 2008b. Bat assemblages on Neotropical land-bridge islands:  
855 nested subsets and null model analyses of species co-occurrence patterns. Divers.  
856 Distrib. 14, 644–654. doi:10.1111/j.1472-4642.2007.00462.x
- 857 Meyer, C.F.J., Kalko, E.K. V., Kerth, G., 2009. Small-Scale Fragmentation Effects on Local  
858 Genetic Diversity in Two Phyllostomid Bats with Different Dispersal Abilities in  
859 Panama. Biotropica 41, 95–102. doi:10.1111/j.1744-7429.2008.00443.x
- 860 Milton, K., Lozier, J.D., Lacey, E. A., 2008. Genetic structure of an isolated population of  
861 mantled howler monkeys (*Alouatta palliata*) on Barro Colorado Island, Panama.  
862 Conserv. Genet. 10, 347–358. doi:10.1007/s10592-008-9584-3
- 863 Norconk, M.A., Grafton, B.W., 2003. Changes in forest composition and potential feeding  
864 tree availability on a small land-bridge island in Lago Guri, Venezuela , in: Marsh, L.K.  
865 (Ed.), Primates in Fragments. Springer US, pp. 211–227
- 866 Peetz, A., Norconk, M.A., Kinzey, W.G., 1992. Predation by jaguar on howler monkeys  
867 (*Alouatta seniculus*) in Venezuela. Am. J. Primatol. 28, 223–228
- 868 Pons, J.-M., Cosson, J.-F., 2002. Use of forest fragments by animalivorous bats in French  
869 Guiana. Rev. d'écologie 57, 117–130

- 870 Qie, L., Lee, T.M., Sodhi, N.S., Lim, S.L.-H., 2011. Dung beetle assemblages on tropical  
871 land-bridge islands: small island effect and vulnerable species. *J. Biogeogr.* 38, 792–  
872 804. doi:10.1111/j.1365-2699.2010.02439.x
- 873 Rao, M., 2000. Variation in leaf-cutter ant (*Atta* sp.) densities in forest isolates: the potential  
874 role of predation. *J. Trop. Ecol.* 16, 209–225.
- 875 Rao, M., Terborgh, J., Nunez, P., 2001. Increased Plant Herbivory in Forest Isolates:  
876 Implications for Plant Community Structure and Composition. *Conserv. Biol.* 15, 624–  
877 633.
- 878 Rebelo, H., Rainho, A., 2009. Bat conservation and large dams: spatial changes in habitat use  
879 caused by Europe's largest reservoir. *Endanger. Species Res.* 8, 61–68.  
880 doi:10.3354/esr00100
- 881 Ringuet, S., 2000. An assessment of the potential influence of rainforest fragmentation on  
882 small terrestrial mammal predation in French Guiana. *Rev. d'ecologie* 55, 101–116
- 883 Robinson, W.D., 1999. Long-Term Changes in the Avifauna of Barro Colorado Island,  
884 Panama, a Tropical Forest Isolate. *Conserv. Biol.* 13, 85–97. doi:10.1046/j.1523-  
885 1739.1999.97492.x
- 886 Shahabuddin, G., Herzner, G.A., Aponte, C., Gomez, M. del C., 2000. Persistence of a  
887 frugivorous butterfly species in Venezuelan forest fragments: the role of movement and  
888 habitat quality. *Biodivers. Conserv.* 9, 1623–1641
- 889 Shahabuddin, G., Ponte, C. A., 2005. Frugivorous butterfly species in tropical forest  
890 fragments: correlates of vulnerability to extinction. *Biodivers. Conserv.* 14, 1137–1152.  
891 doi:10.1007/s10531-004-7842-3
- 892 Shahabuddin, G., Terborgh, J.W., 2000. Frugivorous butterflies in Venezuelan forest  
893 fragments: abundance, diversity and the effects of isolation. *J. Trop. Ecol.* 15, 703–722
- 894 Silva, S.S.B., Ferrari, S.F., 2009. Behavior patterns of southern bearded sakis (*Chiropotes*  
895 *satanas*) in the fragmented landscape of eastern Brazilian Amazonia. *Am. J. Primatol.*  
896 71, 1–7. doi:10.1002/ajp.20624
- 897 Terborgh, J., Feeley, K., Silman, M., Nunez, P., Balukjian, B., 2006. Vegetation dynamics of  
898 predator-free land-bridge islands. *J. Ecol.* 94, 253–263. doi:10.1111/j.1365-  
899 2745.2006.01106.x
- 900 Terborgh, J., Lopez, L., Nuñez, P., Rao, M., Shahabuddin, G., Orihuela, G., Riveros, M.,  
901 Ascanio, R., Adler, G.H., Lambert, T.D., Balbas, L., 2001. Ecological meltdown in  
902 predator-free forest fragments. *Science* 294, 1923–6. doi:10.1126/science.1064397
- 903 Terborgh, J., Lopez, L., Tello, J.S., 1997a. Bird Communities in Transition: The Lago Guri  
904 Islands. *Ecology* 78, 1494–1501
- 905 Terborgh, J., Lopez, L., Tello, J.S., Yu, D., Bruni, A.R., 1997b. Transitory states in Relaxing  
906 Ecosystems of Land Bridge Islands, in: Laurance, W.F., Bierregaard, R.O. (Eds.),

- 907 Tropical Forest Remnants: Ecology, Management, and Conservation of Fragmented  
908 Communities. University of Chicago Press, London, pp. 256–274
- 909 Tremblay, A., Begin, Y., 2005. The effects of snow packing on tree growth forms on an  
910 island in a recently created reservoir in northern Quebec. *Ecoscience* 12, 530–539
- 911 Tremblay, A., Begin, Y., 2000. The response of black spruce to the climatic influence of  
912 Robert-Bourassa Reservoir, in northern Quebec. *Ecoscience* 7, 228–236
- 913 Veiga, L.M., Ferrari, S.F., 2006. Predation of Arthropods by Southern Bearded Sakis  
914 (*Chiropotes satanas*) in Eastern Brazilian Amazonia. *Am. J. Primatol.* 68, 209–215.  
915 doi:10.1002/ajp
- 916 Wang, Y., Zhang, J., Feeley, K.J., Jiang, P., Ding, P., 2009. Life-history traits associated with  
917 fragmentation vulnerability of lizards in the Thousand Island Lake, China. *Anim.*  
918 *Conserv.* 12, 329–337. doi:10.1111/j.1469-1795.2009.00257.x
- 919 Wang, Y., Bao, Y., Yu, M., Xu, G., Ding, P., 2010. Nestedness for different reasons: the  
920 distributions of birds, lizards and small mammals on islands of an inundated lake.  
921 *Divers. Distrib.* 16, 862–873. doi:10.1111/j.1472-4642.2010.00682.x
- 922 Wang, Y., Chen, S., Ding, P., 2011. Testing multiple assembly rule models in avian  
923 communities on islands of an inundated lake, Zhejiang Province, China. *J. Biogeogr.* 38,  
924 1330–1344. doi:10.1111/j.1365-2699.2011.02502.x
- 925 Wang, Y., Zhang, M., Wang, S., Ding, Z., Zhang, J., Sun, J., Li, P., Ding, P., 2012a. No  
926 evidence for the small-island effect in avian communities on islands of an inundated  
927 lake. *Oikos* 121, 1945–1952. doi:10.1111/j.1600-0706.2012.20322.x
- 928 Wang, Y., Wang, X., Ding, P., 2012b. Nestedness of snake assemblages on islands of an  
929 inundated lake. *Curr. Zool.* 58, 828–836
- 930 Wang, Y., Zhu, Y., Wang, Y., 2012c. Differences in spatial genetic structure and diversity in  
931 two mosses with different dispersal strategies in a fragmented landscape. *J. Bryol.* 34, 9–  
932 16. doi:10.1179/1743282011Y.0000000035
- 933 Wang, Y., Lane, A., Ding, P., 2012d. Sex-biased dispersal of a frog (*Odorrana schmackeri*)  
934 is affected by patch isolation and resource limitation in a fragmented landscape. *PLoS*  
935 *One* 7, e47683. doi:10.1371/journal.pone.0047683
- 936 Weerakoon, W.M.S.K., 2001. Comparative richness of amphibians inhabiting the islands at  
937 Randenigala reservoir with mainland of the Victoriya Randenigala Ranambe (VRR)  
938 sanctuary. *Lyriocephalus* 44, 124–129
- 939 Willis, E.O., 1974. Populations and Local Extinctions of Birds on Barro Colorado Island,  
940 Panama. *Ecol. Monogr.* 44, 153–169
- 941 Wright, S.J., Gompper, M.E., DeLeon, B., 1994. Are large predators keystone species in  
942 Neotropical forests? The evidence from Barro Colorado Island. *Oikos* 71, 279–294

943 Yong, D.L., Lohman, D.J., Gan, C.W., Qie, L., Lim, S.L.-H., 2012. Tropical butterfly  
 944 communities on land-bridge islands in Peninsular Malaysia. *Raffles Bull. Zool.* 25, 161–  
 945 172

946 Yong, D.L., Qie, L., Sodhi, N.S., Koh, L.P., Peh, K.S.-H., Lee, T.M., Lim, H.C., Lim, S.L.-  
 947 H., 2010. Do insectivorous bird communities decline on land-bridge forest islands in  
 948 Peninsular Malaysia? *J. Trop. Ecol.* 27, 1–14. doi:10.1017/S0266467410000520

949 Yu, L., Lu, J., 2011. Does landscape fragmentation influence sex ratio of dioecious plants? A  
 950 case study of *Pistacia chinensis* in the Thousand-Island Lake region of China. *PLoS One*  
 951 6, e22903. doi:10.1371/journal.pone.0022903

952 Yu, M., Hu, G., Feeley, K.J., Wu, J., Ding, P., 2012. Richness and composition of plants and  
 953 birds on land-bridge islands: effects of island attributes and differential responses of  
 954 species groups. *J. Biogeogr.* 39, 1124–1133. doi:10.1111/j.1365-2699.2011.02676.x

955 Yuan, N., Comes, H.P., Mao, Y.-R., Qi, X.-S., Qiu, Y.-X., 2012. Genetic effects of recent  
 956 habitat fragmentation in the Thousand-Island Lake region of southeast China on the  
 957 distylous herb *Hedyotis chrysotricha* (Rubiaceae). *Am. J. Bot.* 99, 1715–25.  
 958 doi:10.3732/ajb.1200054

959 Zhang, X., Xu, G., Shen, D., Gu, Y., Gao, H., Luo, X., Chen, X., 2007. Maintenance and  
 960 natural regeneration of *Castanopsis sclerophylla* populations on islands of Qiandao Lake  
 961 Region, China. *Acta Ecol. Sin.* 27, 424–430. doi:10.1016/S1872-2032(07)60014-6

962

## APPENDIX B1

**Table B1**

Summary of research articles used in the species richness analysis. For full references, see Appendix A1. For data used in the analysis, see Appendix B.

Reference	Habitat type	Region	Country	Dam	Isolation time (years)	Number of islands studied	Number of control sites	Island areas (ha)
Badano et al. (2005)	Subtropical forest	South America	Argentina	Cabra Corral	15	9	1	0.16-62.5
Benchimol & Peres (2015)	Wet tropical forest	South America	Brazil	Balbina	26	34	12	<1-1690
Cosson et al. (1999)b	Wet tropical forest	South America	French Guiana	Petit Saut	1	6	3	2-40
Estrada-Villegas et al. (2010)	Wet tropical forest	Central America	Panama	Gatun Lake	92	8	6	2.5-50
Feer & Hingrat (2005)	Wet tropical forest	South America	French Guiana	Petit Saut	4	7	3	1.1-25.5
Gibson et al. (2013)	Wet tropical forest	Asia	Thailand	Chiew Larn	26	16	1	0.3-56.3
Granjon et al. (1996)	Wet tropical forest	South America	French Guiana	Petit Saut	1	10	1	0.35-30
Karr (1982)b	Wet tropical forest	Central America	Panama	Gatun Lake	66	1	2	1500
Leigh et al. (1993)	Wet tropical forest	Central America	Panama	Gatun Lake	66	7	4	0.6-1500
Meyer & Kalko (2008)a	Wet tropical forest	Central America	Panama	Gatun Lake	91	11	6	2.5-50
Pons & Cosson (2002)	Wet tropical forest	South America	French Guiana	Petit Saut	2	16	1	<6-28
Qui et al. (2011)	Wet tropical forest	Asia	Malaysia	Lake Kenyir	23	24	3	<1-383.3
Terborgh et al. (1997)	Wet tropical forest	South America	Venezuela	Lago Guri	9	12	1	1-350
Wang et al. (2009)	Subtropical forest	Asia	China	Thousand Island Lake	49	42	7	0.67-1289.23
Weerakoon (2009)	Subtropical forest	Asia	Sri Lanka	Randenigala	12	6	5	2-167
Yong et al. (2010)	Wet tropical forest	Asia	Malaysia	Lake Kenyir	22	6	2	<20- >100
Yong et al. (2012)	Wet tropical forest	Asia	Malaysia	Lake Kenyir	22	6	2	<20- >100

## Table B2

Coefficients for the fixed effects of models that treat study identity, dam, and taxonomic group as random effects. The Chi-square ( $\chi^2$ ) value and p-value from model comparison by ANOVA is given. The final model used in analysis only included significant fixed effects: AREA and  $T_{ISO}$ . Values presented in this table are from model comparisons using a reduced dataset (n islands = 148) to account for missing values. Following model comparison, the final model was used on the full dataset (n islands = 249) which did not have missing values for the variables included in the model.

Fixed effects	Estimate	SE	t-value	df	$\chi^2$	p-value
Intercept	-0.514	0.237	-2.168			
AREA	0.237	0.02	11.958	1	94.744	<0.001
$T_{ISO}$	-0.328	0.069	-4.720	1	16.136	<0.001
$D_{MAIN}$	-0.037	0.039	-0.951	1	0.894	0.344
$D_{ISLAND}$	-0.062	0.043	-1.434	1	1.991	0.158

## Table B3

Intercepts for the best unbiased linear predictors (BLUPs) for each dam generated using the ‘ranef’ function in lme4 (Bates et al., 2014). Negative BLUPs indicate lower species richness values than predicted by the model; positive BLUPs indicate higher species richness values than predicted.

Dam	Intercept (Dam)
Balbina	0.0367
Cabra Corral	-0.131
Chiew Larn	-0.071
Gatun Lake	0.361
Lago Guri	-0.059
Lake Kenyir	-0.247
Petit Saut	-0.079
Randenigala	-0.007
Thousand Island Lake	0.196