

Payne R (2012) Volcanic impacts on peatland microbial communities: A tephropalaeoecological hypothesis-test, *Quaternary International*, 268, pp. 98-110.

**This is the peer reviewed version of this article**

*NOTICE: this is the author's version of a work that was accepted for publication in Quaternary International resulting from the publishing process, such as peer review, editing, corrections, structural formatting, and other quality control mechanisms may not be reflected in this document. Changes may have been made to this work since it was submitted for publication. A definitive version was subsequently published in Quaternary International, [VOL 268 (2012)] DOI: <http://dx.doi.org/10.1016/j.quaint.2011.06.019>*

**Volcanic impacts on peatland microbial communities: a tephropalaeoecological hypothesis-test.**

**Richard J. Payne**

Geography, School of Environment and Development, University of Manchester,  
Oxford Road, Manchester M13 9PL, United Kingdom.

Department of Environmental and Geographical Science, Manchester Metropolitan  
University, Chester Street, Manchester M1 5DG, United Kingdom.

E-mail: [r.payne@mmu.ac.uk](mailto:r.payne@mmu.ac.uk)

**ABSTRACT**

Volcanic eruptions affect peatlands around the world, depositing volcanic ash (tephra) and a variety of chemicals including compounds of sulphur. These volcanic impacts may be important for many reasons, in particular sulphur deposition has been shown to suppress peatland methane flux, potentially reinforcing climatic cooling. Experiments have shown that sulphur deposition also forces changes in testate amoeba communities, potentially relating to the reduced methane flux. Large volcanic eruptions in regions with extensive peatlands are relatively rare so it is difficult to assess the extent to which volcanic eruptions affect peatland microbial communities; palaeoecological analyses across tephra layers provide a means to resolve this uncertainty. In this study testate amoebae were analysed across multiple monoliths from a peatland in southern Alaska containing two tephra layers, probably representing the 1883 eruption of Augustine Volcano and a 20<sup>th</sup> Century eruption of Redoubt Volcano. Results showed relatively distinct and often statistically significant changes in testate amoeba community coincident with tephra layers which largely matched the response found in experimental studies of sulphur deposition. The results suggest volcanic impacts on peatland microbial communities which might relate to changes in methane flux.

1 KEYWORDS: Mires, Wetlands, Tephra, Volcanoes, Protozoa, Carbon balance,  
2 Methane

## 3 4 INTRODUCTION

5  
6 Many peatland areas lie within reach of the products of volcanic eruptions.  
7 Visible or microscopic layers of volcanic ash (tephra) have been found in peatlands  
8 around the world (Dugmore 1989, Pilcher et al. 2005, Hang et al. 2006, Lowe 2008)  
9 and volcanic gases may be even more widely dispersed (Camuffo & Enzi 1995,  
10 Grattan et al. 1998). The possible impact of these volcanic products has been  
11 addressed by only a few studies but there is reason to think that ecological affects  
12 might be relatively severe (Payne and Blackford 2005; Hotes et al. 2004, 2010).  
13 Particularly important may be impacts on peatland gas flux. Studies of sulphate  
14 pollution have shown a suppression of methane flux, believed to relate to a shift in  
15 competitive dominance from methanogenic archaea to sulphate reducing bacteria  
16 (Gauci and Chapman 2006). As volcanic eruptions produce vast quantities of sulphate  
17 it has been modelled that this effect might contribute to a halving of wetland methane  
18 flux following a large eruption (Stevenson et al. 2003; Gauci et al. 2005; 2008) and  
19 some support for this hypothesis is provided by ice core evidence (Gauci et al. 2008).  
20 On a molecule for molecule basis methane is 21 times more powerful than CO<sub>2</sub> as a  
21 greenhouse gas so changes in methane production have the potential to affect global  
22 climate, reinforcing aerosol-forced cooling. So far there is no direct evidence for the  
23 inferred microbial competitive shift which is believed to be the cause of the methane  
24 suppression. It can be hypothesised that a major change in prokaryote community  
25 structure might produce consequent changes in higher microbial groups. The  
26 dominant eukaryotic microbial group in peatlands is the testate amoebae, a group of  
27 heterotrophic and mixotrophic protists characterised by a solid shell. To see whether  
28 sulphate deposition might produce changes in testate amoebae which might be  
29 mediated by the shift to sulphate reducing bacteria Payne et al. (2010) investigated the  
30 communities of sodium sulphate treated plots for which long-lasting methane  
31 suppression had been previously demonstrated (Gauci et al. 2005). Results showed  
32 statistically significant changes in community composition with a reduced abundance  
33 of small bacterivorous taxa. This result has subsequently been replicated in plots  
34 treated with a one-off application of sulphuric acid (Payne 2010). These studies

1 demonstrate changes in microbial community structure in sulphur-treated peatlands.  
2 The fact that the largest and most consistent changes are apparent in bacterivorous  
3 taxa appears to support the hypothesis of a sulphate-induced change in prokaryote  
4 communities, although other explanations for the changes cannot be excluded on this  
5 evidence.

6 Experimental studies of this nature are inevitably limited by the uncertainty  
7 and limitations of the investigated scenarios. An alternative approach is to use the  
8 palaeoecological record to investigate the response to a real volcanic event. Tephra  
9 layers preserved in peat allow a volcanic event to be precisely positioned in the  
10 stratigraphic sequence. Palaeoecological studies across tephra layers allow the  
11 potential to investigate volcanic impacts, an approach termed tephropalynology for  
12 studies based on pollen and spores (Lowe and Hunt 2001, Edwards et al. 2004) or  
13 tephropalaeoecology for studies based on other micro- or macrofossils (Payne and  
14 Blackford 2008a). As testate amoebae are widely preserved in peatlands  
15 tephropalaeoecological analyses of testate amoebae provides the potential to  
16 demonstrate the impact of a real volcanogenic sulphate deposition event on peatland  
17 microbial communities. Due to the sample preparation approach a previous study of  
18 this nature had limited ability to identify the compositional changes which have been  
19 experimentally identified (Payne and Blackford 2008a; Payne 2009).

20 Here we apply a palaeoecological approach to test the hypothesis that a  
21 volcanic event may cause a change in microbial communities which is detectable in  
22 the testate amoeba stratigraphic record. A general problem with  
23 tephropalaeoecological studies is the difficulty of separating volcanic impact from  
24 non-volcanic variability. If changes coincident with tephra-deposition are apparent it  
25 is difficult to exclude the possibility of impacts due to broadly-synchronous non-  
26 volcanic processes (whether autogenic or allogenic). However, the case for a volcanic  
27 impact is much enhanced if consistent palaeoecological changes coincident with  
28 tephra deposition can be shown in multiple profiles from the same site and for several  
29 tephra (cf. Caseldine et al. 1998). This study investigates the tephropalaeoecological  
30 record of multiple profiles from a peatland in southern Alaska with the specific aims  
31 to:

- 32 1. Determine if any impacts on the taxa identified as sensitive to sulphur deposition  
33 can be identified.

- 1     2. Determine if different volcanic events produce similar testate amoeba responses
- 2         in the same site.
- 3     3. Determine if the same tephra layer is associated with similar impacts in profiles
- 4         from different positions within the same site.

5

## 6     SITE and METHODS

7

8             The site (informally termed ‘Sterling Moss’) is a kettle-hole peatland located  
9     in the Kenai Lowlands to the west of the Kenai Peninsula in south-central Alaska, east  
10    of the town of Sterling (60°31’N, 150°31’W: Fig. 1). The vegetation of the site is  
11    *Sphagnum*-dominated and also includes *Empetrum nigrum*, *Eriophorum* spp. and  
12    *Rubus chamaemorus*. On the basis of topography and vegetation the peatland appears  
13    oligotrophic but not ombrotrophic, as for other Kenai peatlands. Results from an  
14    initial monolith (extracted in summer 2003) have been reported by Payne and  
15    Blackford (2008a, 2008b). A further six monoliths were extracted along a transect of  
16    the centre of the site in July 2007 (Fig. 1). All sampling locations have similar  
17    vegetation. Monolith blocks, approximately 300 mm deep and 100 mm broad, were  
18    removed by cutting down from the peat surface. Stratigraphy was recorded in the field  
19    and blocks wrapped in plastic for transport back to the laboratory.

20

### 21    *Tephra analysis*

22

23             Tephra layers were macroscopically visible in three monoliths (ST4, ST5,  
24    ST6) as a (sometimes discontinuous) thin layer of grey, silt-sized shards, but no  
25    tephras were visible in the other two monoliths. To precisely locate tephra layers and  
26    produce concentration profiles, samples were prepared by ashing and tephra shards  
27    counted under the microscope (Pilcher and Hall, 1992). Samples of either 5mm or  
28    10mm vertical thickness were extracted through the length of the monolith, dried at  
29    110°C and incinerated at 550°C; weights pre- and post-incineration were used to  
30    calculate loss on ignition (LOI). The residue was washed in 10% HCl, centrifuged,  
31    and prepared samples stored in water. A *Lycopodium* spore inoculum was added to  
32    allow semi-quantitative estimates of tephra shard concentration (Stockmarr 1971;  
33    Caseldine et al., 1998). The prepared sample was mixed with a drop of glycerol on a  
34    microscope slide and examined at 400X magnification. The number of tephra shards

coinciding with at least 50 *Lycopodium* spores was counted. Geochemical analyses were used to determine the provenance of the visible tephra layers in three monoliths: the tephra at 11cm in profile ST4, 16cm in ST5 and 14cm in ST6. Samples were prepared by acid digestion following the methods of Persson (1971) and Dugmore (1989) and thin-sections prepared (Dugmore et al. 1995; Swindles et al. 2010). Samples were analysed by wavelength dispersive electron probe microanalysis (EPMA) using the Cameca SX100 microprobe at the School of Geosciences, University of Edinburgh. Analytical conditions were a 20 kV accelerating voltage and 4 nA beam current, the beam was rastered over a 10x10 µm grid to minimise sodium mobilisation. Analyses with totals <95% (Hunt and Hill 1993) and minor geochemical populations were removed prior to data analysis. Similarity to geochemical data from a large number of previous Alaskan tephra studies (see Payne & Blackford 2008b for full list) was tested using standard similarity coefficients and SIMAN coefficients (Borchardt et al. 1972). The SIMAN coefficient is calculated as:

$$SIMAN_{(A,B)} = \frac{\sum_{i=1}^n R_i g_i}{\sum_{i=1}^n g_i} \quad g_i = 1 - \sqrt{\frac{(\sigma_{iA} / X_{iA})^2 + (\sigma_{iB} / X_{iB})^2}{E}}$$

where  $X_{iA}$  = concentration of element  $i$  in sample A,  $R_i = X_{iA}/X_{iB}$ , if  $X_{iA} < X_{iB}$  and  $R_i = X_{iB}/X_{iA}$ , if  $X_{iB} < X_{iA}$  (i.e. the standard similarity coefficient),  $\sigma_{iA}$  = 1 standard deviation for  $X_{iA}$ , and  $E$  = the relative error due to the detection limit, set here at 0.7 to exclude only MnO from analysis. A SIMAN coefficient of 1 would indicate identical composition, however given sample heterogeneity this is extremely unlikely, a SIMAN coefficient of 0.95 is taken to indicate correlation (Payne and Blackford 2008b).

### *Testate amoeba analysis*

Samples for testate amoeba analysis were removed at resolutions varying between 2.5 and 10mm vertical-thickness with higher resolution sampling used for the region directly enclosing the tephra; cores were frozen to allow fine peat-cutting. To

1 assess very fine-scale horizontal variability in amoeba response, samples from two  
2 sequences on opposite sides of the ST4 monolith were removed (approximately 80mm  
3 apart, designated ST4A and ST4B). Samples were prepared using a method based on  
4 wet-sieving, similar to that of Hendon & Charman (1997). Peat sub-samples were  
5 removed from the core and boiled in 50 ml deionised water. Samples were sieved at  
6 250µm but fine sieving was not used as this is liable to lead to loss of the smallest  
7 tests and many of the smaller taxa are particularly relevant to this study (Payne 2009;  
8 Payne et al. 2009; Payne 2010). Samples were stored in water, slides prepared by  
9 mixing with glycerol and examined at 400X magnification. 150 tests per sample were  
10 counted, taxonomy used a range of guides with groupings similar to those of Charman  
11 et al. (2000); full details are given by Payne et al. (2006). The test count required to  
12 identify each additional taxon was recorded to give information on how successful the  
13 count total is at identifying taxa (Warner 1990; Woodland et al. 1998; Payne and  
14 Mitchell 2009).

#### 16 *Data analysis*

18 The transfer function of Payne et al. (2006) was used to derive estimates of  
19 depth to water table (termed testate amoeba-inferred depth to water table: TI-DWT)  
20 and pH (testate amoeba-inferred pH: TI-pH) in  $C^2$  vers 1.5 (Juggins 2003). This  
21 transfer function is preferred over an alternative transfer function (Markel et al. 2010)  
22 due to assured taxonomic consistency (*cf.* Payne et al. 2010), less severe  
23 autocorrelation problems (Payne, Telford et al. unpublished data) and the inclusion of  
24 surface samples from the same site. As the samples used to derive the transfer  
25 function were prepared using fine-filtering the data may not be entirely comparable to  
26 that presented here (Payne 2009). To account for this methodological difference  
27 transfer function inferences were calculated with the smallest taxa (including  
28 *Euglypha rotunda* type, *Corythion dubium* and *Trinema* type) excluded from both the  
29 training set and palaeoecological data, this somewhat reduces the effective count but  
30 is unlikely to significantly affect model performance (Payne & Mitchell 2009).

31 Volcanic impacts on the testate amoeba data were tested using a constrained-  
32 ordination approach. Loss on ignition (LOI) was used as an explanatory variable to  
33 represent volcanic impact based on the observations that tephra constitutes the  
34 overwhelming majority of inorganic material (Fig. 2) and non-tephra material shows

1 limited variability through the profiles. Alternative approaches would be to use the  
2 tephra concentration data (e.g. Barker 2000, Eastwood et al. 2002) or a conceptual  
3 volcanic-impact model based on exponential decay (Lotter & Birks 1993; Birks &  
4 Lotter 1994; Payne & Blackford 2008a). LOI was preferred to tephra concentration  
5 data due to the higher resolution while the stratigraphic positioning of a volcanic-  
6 impact model is somewhat complicated given the very high resolution. In addition to  
7 LOI before/after nominal variables were included for both tephra layers to determine  
8 whether lasting impacts are apparent. Species data was reduced in resolution by  
9 combining adjacent samples to match that of the LOI data where required and was  
10 square root-transformed. Compositional gradient lengths determined using detrended  
11 canonical correspondence analysis (DCCA) were short (<1.4 standard deviations) so  
12 redundancy analysis (RDA) was selected as the most appropriate direct gradient  
13 analysis technique. Depth was partialled out as a surrogate for time to separate the  
14 effect of longer-term processes such as climatic change, the catotelm-acrotelm  
15 transition and peatland development. Four sets of analyses were conducted using  
16 combinations of LOI with one or both before/after variables. Stratigraphically-  
17 constrained Monte Carlo permutation tests (999 permutations: Birks 1998) were used  
18 to test the null hypothesis of no relationship between explanatory variables and  
19 species data. All ordination analyses were conducted using CANOCO vers 4.53 (Ter  
20 Braak & Smilauer 1997-2004).

## 22 RESULTS

### 24 *Tephrostratigraphy*

25       There is a good deal of geochemical similarity between tephras ST4-11 and  
26 ST6-14, but tephra ST5-16 is distinctly different (Table 1; Appendix 1). Similarity  
27 and SIMAN coefficients for ST5-16 show the greatest geochemical similarity with  
28 analyses of Augustine 1883 tephra; coefficients generally exceed the 0.95 criterion  
29 although there are some differences for several oxides (Table 1). Tephra from this  
30 eruption has been found at a similar depth in a nearby Kenai peatland suggesting  
31 general equivalency in age (Payne and Blackford 2008b). The ST4-11 and ST6-14  
32 tephras show greatest similarity to analyses of Redoubt tephra. Averages of both  
33 datasets plot very close to analyses of Redoubt tephra by Begét et al. (1994) and  
34 Riehle (1985)(Fig. 3). Similarity coefficients and SIMAN coefficients show greatest



1 similarity to Redoubt tephras dated c.350 BP and over 500 BP (Table 1). However,  
2 these values are generally less than the commonly applied 0.95 criterion and there are  
3 notable differences in K<sub>2</sub>O (Table 1, Appendix 1). Given the stratigraphic position  
4 and probable identification of Augustine 1883 tephra at 16cm depth in ST5 the 1902  
5 or 1966 Redoubt eruptions are probable sources, with tephra from the 1902 eruption  
6 previously found in nearby Skilak Lake (Begét et al. 1994). Neither of these three  
7 tephras are the same as the ST12 tephra studied by Payne and Blackford (2008a & b).  
8 Although no more than one tephra was macroscopically visible in any monolith two  
9 separate tephras are detectable in monoliths ST2, ST3 and ST4b and in ST5 a third  
10 minor tephra also appears to be present. A lower tephra is likely to lie below the  
11 analysed section in monoliths ST4a and ST6. The hypothesised relation of these  
12 tephras is shown in Fig. 4 although there is uncertainty in some of these links.

#### 13 14 *Testate amoeba counts*

15 Figure 5 shows the impact of increasing count on number of testate amoeba  
16 taxa identified for 92 samples. Although the rate of increase slows with increasing  
17 count, a plateau is not reached. New taxa are identified with counts over 130 in 41 of  
18 the samples. It is clear that in these samples a count of 150 is insufficient to identify  
19 all taxa and consequently little weight should be attached to the presence or absence  
20 of minor taxa. This result emphasises the point made by Payne & Mitchell (2009) that  
21 while counts of less than 150 may be adequate to characterise the amoeba  
22 composition of a sample, a count of considerably more than 150 would be required to  
23 be sure of identifying all taxa (*cf.* Wall et al. 2009).

#### 24 25 *Testate amoeba community and transfer function inferences*

26 The testate amoeba community of the analysed sections shows some  
27 variability between monoliths, mirroring that found in surface samples from this site  
28 (Payne et al. 2006). Common taxa include *Hyalosphenia papilio*, *Archerella flavum*,  
29 *Nebela militaris*, *Trinema lineare* and *Heleopera sphagni*, all comparatively common  
30 in oligotrophic peatlands. Transfer function inferences show only very limited  
31 changes in TI-DWT or TI-pH through the profiles with few exceeding the boot-  
32 strapped error estimates, untangling pH and DWT reconstructions is difficult as the  
33 two are correlated in the training set. Among the more distinct changes are indications

1 of a shift to more acidic conditions above the upper tephra in ST2, ST5 and -less  
2 distinctly- ST4b and some indication of a general drying trend in ST5, ST3 and ST4b.

### 4 *Multivariate analysis*

5 The ordination analyses show that LOI explains a significant proportion of  
6 species variance in many of the profiles (Table 2). In two of the profiles a large and  
7 significant proportion of the variance is explained when using the simplest test with  
8 LOI as sole explanatory variable (ST4b and ST5). With the addition of before/after  
9 variables for all tephra there is also a significant relationship in profile ST3 and up to  
10 a third of variance is explained. Where more than one tephra is present similar  
11 variance is explained by LOI and the before/after variable for each tephra suggesting  
12 similar impacts. Using the approach of Lotter & Birks (1993) significant variance can  
13 be explained by both tephra in one further profile (ST2). It is important to note that in  
14 harmonising the species and LOI data some temporal resolution has been lost and this  
15 may well be an important cause of the lack of a significant relationship in some of the  
16 analyses. Taken overall the results suggest an association between loss on ignition and  
17 testate amoeba compositional change, which as LOI is dominated by tephra provides  
18 evidence for a volcanic impact on the testate amoebae of these sites. There is evidence  
19 for both an immediate short-term impact (shown by the LOI trough) and a lasting  
20 longer-term impact (the before/after variables).

### 22 *Species changes*

24 Changes in testate amoeba community coincident with the tephra layers are  
25 apparent in many of the stratigraphic diagrams (Fig. 6), summarised in Table 3. Many  
26 changes appear consistent between tephra. The relative abundance of *Trinema*  
27 *lineare* is reduced coincident with tephra ST2-15.5, ST2-21.5, ST3-16.5, ST4a-11.5,  
28 ST5-17.5 and ST6-14. *Heleopera sphagni* increases coincident with ST2-15.5, ST2-  
29 21.5, ST4a-11.5 and ST4b-11 (this species appears to decrease coincident with tephra  
30 ST4b-14.5 but these analyses are lower resolution). *Diffflugia pulex* type, *Diffflugia*  
31 *pristis* type, *Cryptodiffflugia oviformis* and *Phryganella acropodia* type all increase  
32 across two tephra. The only taxon to clearly show opposing changes in different  
33 profiles is *Archerella flavum* which increases across three tephra but shows a distinct  
34 decline across tephra ST4b-11. There is no obvious difference between species

1 responding to tephra suggested to represent Augustine 1883 or Redoubt tephra.  
2 Profiles ST4a and ST4b are from opposite sides of the same monolith however there  
3 are some differences in both amoeba community and apparent tephra response  
4 between the two profiles.

5 A methodological complication is that as the high resolution samples were  
6 extracted and analysed subsequent to the initial samples they are slightly horizontally  
7 displaced. Although the high resolution samples were rarely more than c.20mm from  
8 the initial coarser resolution samples this offset (or even subsequent decomposition of  
9 tests) might explain some instances where there appear to be very abrupt changes  
10 between the low- and high-resolution sections of the records, visible for instance in  
11 *Trinema lineare* in ST6 and *Heleopera sphagni* in ST2. In the case of ST5 there is  
12 also an offset between the position of the tephra peak (determined on the low-  
13 resolution samples) and the loss on ignition trough (determined on the high-resolution  
14 samples).

15 The species showing the most distinct change is *Trinema lineare* which has a  
16 small translucent test. A more prosaic alternative to a volcanic impact might be that it  
17 is simply difficult to locate the tests amid the numerous tephra shards and individuals  
18 are overlooked. To account for this possibility some of these samples were re-counted  
19 with very close attention to locating these tests; little difference in abundance was  
20 found.

## 21 22 *Sulphur indicator species* 23

24 Previous studies have investigated the response of testate amoebae to sulphur  
25 in experimental studies of peatlands. Payne et al. (2010) studied the affect of sodium  
26 sulphate application in a peatland in eastern Scotland and Payne (2010) studied the  
27 response to sulphuric acid application in a peatland in western Scotland. Both studies  
28 identified sulphur application as capable of leading to compositional change in testate  
29 amoeba communities. To aid application of the experimental results to the  
30 palaeoecological record these data were reanalysed to identify indicator species using  
31 the IndVal technique (Dufrêne and Legendre 1997) with 999 permutations (Table 4).  
32 Three species were consistently identified as indicators of non-sulphur treated plots:  
33 *Corythion dubium*, *Euglypha rotunda* type and *Trinema lineare*. There is no  
34 consistency in species indicative of sulphur-treated plots, the best indicators are from

1 the sulphuric acid experiment (including *Hyalosphenia subflava* and *Diffflugia pristis*  
2 type) but these should be treated with greater caution due to the more limited scale of  
3 this study.

4 Comparing these experimental results to the palaeoecological results in this  
5 study there is a good deal of similarity. The species most consistently reduced in  
6 abundance coincident with tephra layers (*T. lineare*) is also deleteriously impacted by  
7 sulphur-treatment. *D. pristis* type and *H. petricola* are both increased by sulphur-  
8 treatment and increase coincident with tephra layers. There are some differences in  
9 species response but these are generally minor, for instance *E. rotunda* type slightly  
10 increases coincident with tephra ST4b-11 but is consistently reduced in relative  
11 abundance by experimental sulphur deposition. Several species apparently responding  
12 to volcanic impacts are not identified in the experimental studies but most are rare or  
13 absent in the experimental sites (e.g. *H. papilio*).

## 15 DISCUSSION

### 17 *Evidence for volcanic impacts*

19 The results in this study show good evidence for volcanic impacts on testate  
20 amoeba communities- there are relatively distinct changes apparent in the  
21 stratigraphic diagrams and the ordination results show many to be statistically  
22 significant. The changes are characterised by a relatively distinct species response  
23 with increased *Heleopera sphagni* and *Diffflugia* spp. and particularly, reduced  
24 *Trinema lineare*. As discussed above these changes are consistent with experimentally  
25 demonstrated testate amoeba response to sulphur and, importantly, no major  
26 palaeoecological changes oppose the experimental results. The testate amoebae  
27 changes last around 10-20mm. Assessing the duration of impacts on testate amoebae  
28 from a short-lived environmental change is difficult because amoebae will be living at  
29 a range of depths in the peat on deposition, however given peat accumulation rates it  
30 is probable that impacts shown here lasted over a decade. This is consistent with  
31 experimental evidence for long-lasting testate amoeba response, probably due to tight  
32 cycling of sulphur in acrotelm peats.

33 The testate amoeba response to thin, often cryptic, tephra layers in this study  
34 contrasts with that to much thicker layers in other studies. On Deception Island in the

Antarctic Smith (1974, 1985) found *Assulina muscorum*, *E. rotunda*, *E. strigosa* and particularly *Corythion dubium* colonising recent tephra layers, this list includes taxa morphologically and functionally similar to taxa declining coincident with tephra in this study. In a palaeoecological record from sub-Antarctic Marion Island Yeloff et al. (2007) found a peak in *Corythion-Trinema* type coincident with a 17cm-thick tephra; the ability of *C. dubium* to colonise the harsh physical environment of new tephra deposits is a likely hypothesis for these observations.

#### *Alternative explanations*

Despite the similarity in palaeoecological response to experimental studies of sulphur addition there are many other possible ways by which volcanic activity could affect peatland testate amoebae. These possibilities can also be evaluated against the observed changes. Payne and Blackford (2008) suggest a further four general modes of distal volcanic impact on peatlands:

1. An indirect impact through volcanic impacts on climate and weather leading to cooler conditions, potentially a shorter-term increase in precipitation and perhaps lightning. This possibility can probably be excluded as an explanation for the changes observed here given the lack of consistent changes in known hydrophilic or xerophilic taxa and the lack of a distinct TI-DWT response.
2. Physical impacts of tephra including crushing, abrasion, inhibition of gas exchange and photosynthesis in plants with consequent impacts below ground, perhaps through reduced root exudation. This possibility cannot be excluded but given the thin tephra layers experimental studies suggest that major changes are unlikely (Payne & Blackford 2005; Hotes et al. 2004).
3. Impacts on peatland hydrology, such as surface ponding of water due to a formation of a semi-impermeable surface layer of tephra. Given the thinness of the tephra layer this possibility is highly unlikely and the lack of a TI-DWT change suggests this explanation can probably be excluded.
4. Chemical impacts of tephra and tephra leachates. A wide range of chemicals may be adsorbed to the surface of tephra shards or leached in the acidic peatland environment (Pollard et al. 2003; DeVleeschouwer et al. 2008). Chemicals released may include heavy metals like lead and cadmium which have been shown to affect testate amoebae (Nguyen-Viet et al. 2007, 2008).

DeVleeschouwer et al. (2008) have suggested that tephra layers may provide an enclosed space for bacterial growth fed by tephra-derived nutrients, which would in turn provide food for bacterivorous testate amoebae. As there is uncertainty in how these impacts might be manifested in community changes it is difficult to exclude the possibility that such processes might have had a role in producing the observed changes.

Beyond these possible explanations for volcanic impacts leading to testate amoeba community changes another possibility is that the observed changes are due to taphonomy. Tests of many species are rapidly decomposed in soils and form an important component of nutrient cycling (Meisterfeld & Heisterbaum 1986). Idiosome tests are particularly prone to decomposition and (with the exception of *Assulina* spp.) are rarely found below the uppermost peats in palaeoecological records (Swindles and Roe 2007; Mitchell et al. 2008). It is possible that the input of tephra or adsorbed chemicals might modify environmental conditions to become more favourable for the decomposition of sensitive tests. One possible agent is an increase in acidity due to deposition of volcanic acids, although it is uncertain whether any drop in pH would be of sufficient duration and magnitude to produce a detectable change in amoeba relative abundances.

Other changes might occur due to supply of Si. Oligotrophic peatlands are Si-limited and it might be expected that the supply of Si in tephra, although less bioavailable than biogenic Si, would reduce or remove this limitation. Enhanced silica supply and reduced dissolution have been suggested as causes of enhanced diatom concentration coincident with the Laacher See tephra in NE German lakes (De Klerk et al. 2008) and might also explain the presence of idiosome tests in tephra layers on Marion Island (Yeloff et al. 2007). However in our results the most notable change is a *reduced* abundance of an idiosome species (*T. lineare*) and there is certainly no very consistent increase in idiosome tests. The tests which do increase are most commonly of xenosome construction; while it may be that tephra provides material for test construction in these taxa no embedded tephra shards were noted.

To conclude, while it is difficult to exclude other explanations the results here are consistent with what would be expected as a sulphur-impact and this provides a viable hypothesis for the changes detected in this study.

## 1 *Implications of the results*

2  
3 An increasing number of studies are taking a tephropalaeoecological approach  
4 both to investigate volcanic impacts and to precisely link multiple palaeoecological  
5 records. The presence of tephra layers presents a rare opportunity to use the  
6 palaeoecological record to address the environmental impact of a short-lived pollution  
7 event and it seems increasingly probable that volcanic impacts on peatlands are  
8 represented in the palaeoecological record. Our results emphasise the lesson of  
9 Caseldine et al. (1998) that replicated results are required for a more complete  
10 understanding of volcanic impacts in the palaeoecological record and their spatial  
11 variability.

12 The presence of volcanic impacts suggests that a non-climatic process may be  
13 capable of producing changes in a key climatic proxy which could conceivably be  
14 mis-interpreted as a climate change. It appears however that any volcanic signal is  
15 likely to be short-lived so volcanic forcing of the palaeoecological record is only  
16 likely to be a concern for very high-resolution palaeoclimate studies. These results do  
17 not show consistent changes in TI-DWT; however this does not necessarily mean that  
18 a volcanic impact could not lead to changes in TI-DWT. Many taxa showing apparent  
19 changes do have marked hydrological preferences and it is possible that if the  
20 community composition was different a TI-DWT change could be produced. Any  
21 volcanic impact is likely to be difficult to detect below the acrotelm due to the decay  
22 of idiosome tests. Due to these factors it is probable that volcanic impacts are unlikely  
23 to be a major issue for routine palaeoclimatology, however studies attempting to use  
24 tephra layers to link records between sites (*cf.* Langdon & Barber 2004) should be  
25 wary of the possibility.

26 The results presented here provide evidence for volcanic impacts on peatland  
27 testate amoebae. Testate amoebae constitute a large proportion of microbial biomass  
28 in peatlands (Gilbert et al. 1998a&b) and lie towards the top of the microbial  
29 foodweb. These results therefore suggest that there may have been widespread  
30 volcanic-induced changes in the microbial community of this peatland. Studies of  
31 peatlands exposed to sulphate have shown a reduction in methane flux. Payne (2010)  
32 speculated that observed testate amoebae changes might be related to the inferred shift  
33 from methanogenic archaea to sulphate reducing bacteria with testate amoeba  
34 predation of methanotrophs (recently demonstrated in other protozoa: Murase &

1 Frenzel 2008) seeming a plausible mechanism. While the link between testate amoeba  
2 changes and methane is speculative it is possible that the observed changes here may  
3 relate to a reduction in methanogenesis. These results therefore provide circumstantial  
4 support for the idea that volcanogenic sulphate deposition might lead to methane flux  
5 suppression. Methane flux is affected by a wide-range of processes (climatic,  
6 physical, chemical and biotic: Dise et al. 1993; Shannon and White 1994; Segers  
7 1998) and shows considerable temporal variability, however volcanic flux-  
8 suppression may be highly significant, enhancing the climatic impact of large  
9 eruptions in regions with widespread peatlands (Gauci et al. 2008). Future work will  
10 need to investigate the precise mechanism of sulphate action on testate amoebae to  
11 test whether palaeoecological studies of testate amoebae might allow methane flux  
12 suppression episodes to be identified. The tight integration of experimental and  
13 palaeoecological results is a powerful but little used approach to investigate longer-  
14 term environmental change.

15



1  
2  
3  
4  
5  
6  
7  
8  
9  
10  
11  
12  
13

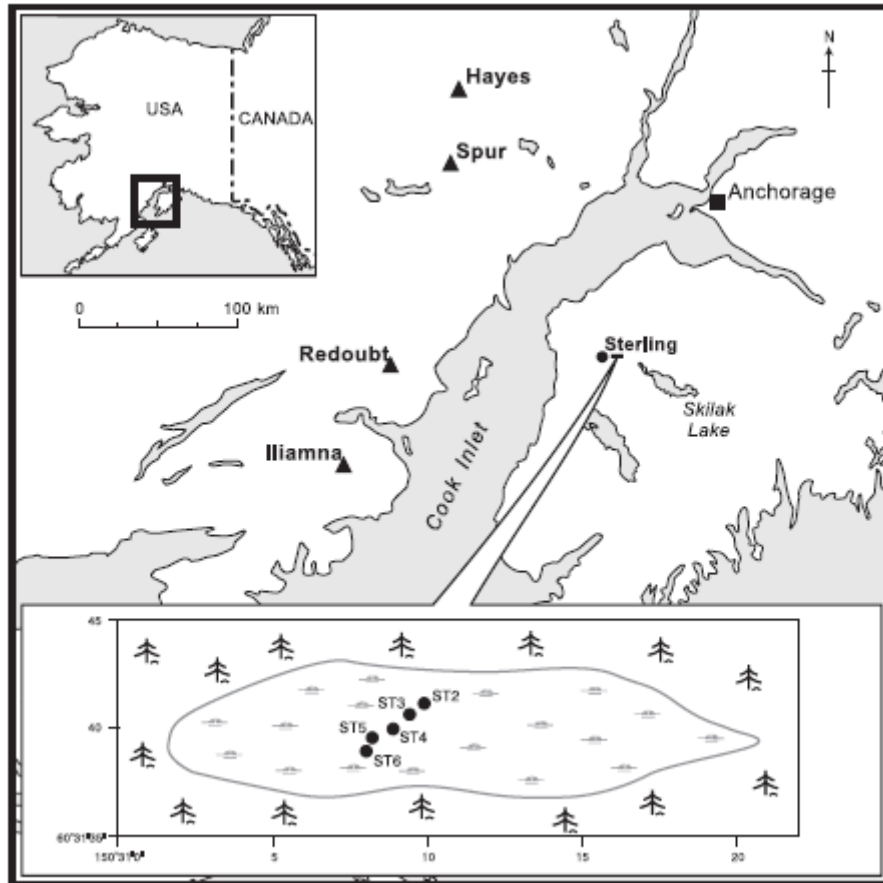
### ACKNOWLEDGEMENTS

Financial support for this study was provided by a Humanities Research Fellowship from the University of Manchester, fieldwork funding was provided by the University of Manchester, Quaternary Research Association and Dudley Stamp Memorial Fund. Microprobe time was funded by the NERC tephrochronology analytical unit, thanks to Dr Chris Hayward for technical assistance. Thanks to Dmitri Mauquoy and Dan Charman for comments on a previous version of this paper. Finally, thanks to Prof Keith Barber whose inspiring undergraduate lectures led the author to become a peatnik.

1 FIGURES and TABLES

2

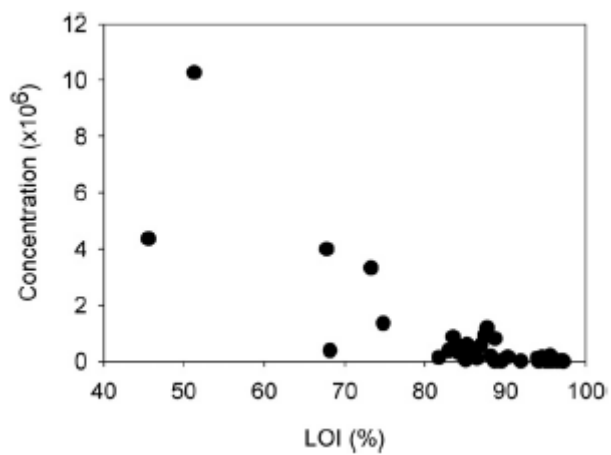
3 Figure 1. Sterling Moss site, sampling locations, regional context and adjacent  
4 volcanoes.



5

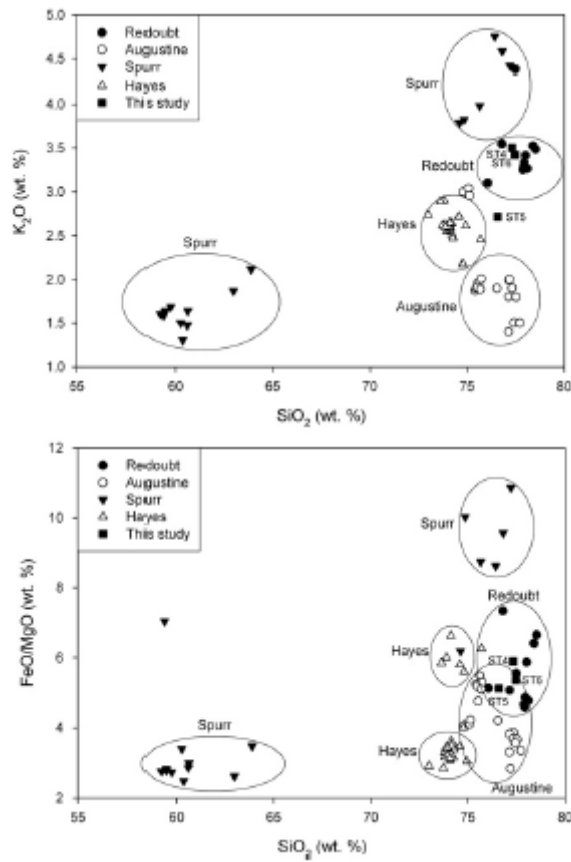
6

7 Figure 2. Tephra concentration against loss on ignition (LOI) for selected samples for  
8 which both data are available.

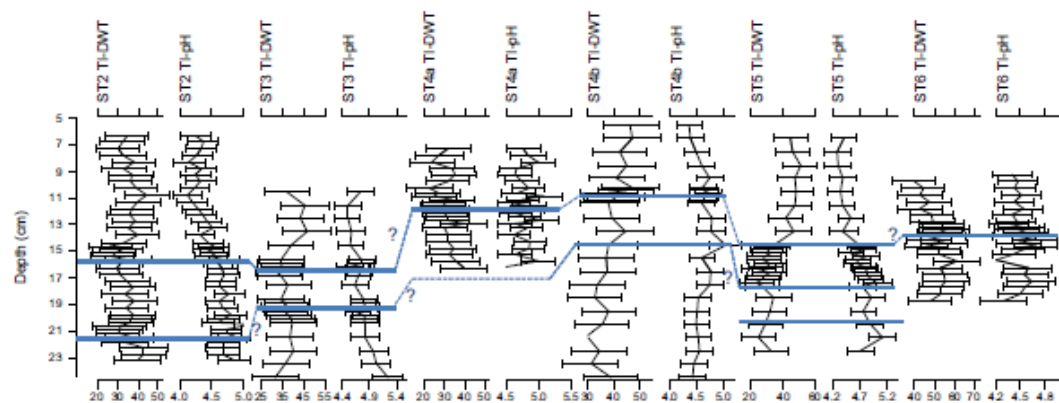


9

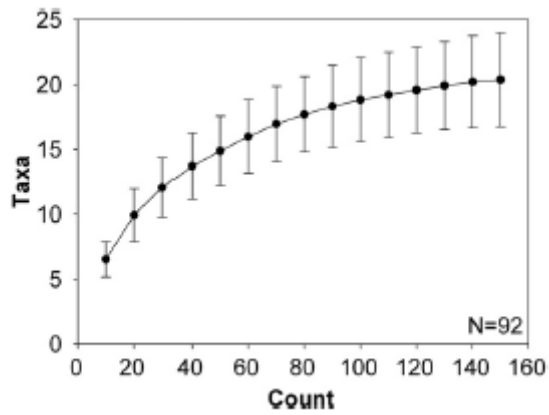
1 Figure 3. Plots of selected major oxides for tephra layers in this study and comparison  
2 data from previous research.



3  
4 Figure 4. Testate amoeba inferred depth to water table (TI-DWT) and pH (TI-pH) for  
5 six profiles showing boot-strapped standard errors (1000 iterations) and hypothesised  
6 correlations between profiles based on tephrostratigraphy.

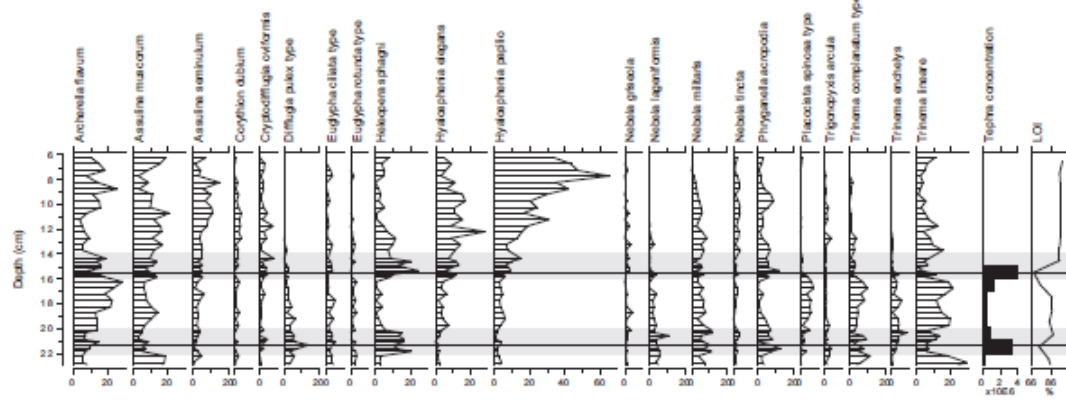


7  
8 Figure 5. Impact of increasing test count on number of taxa recorded shown as mean  
9 and standard deviations.

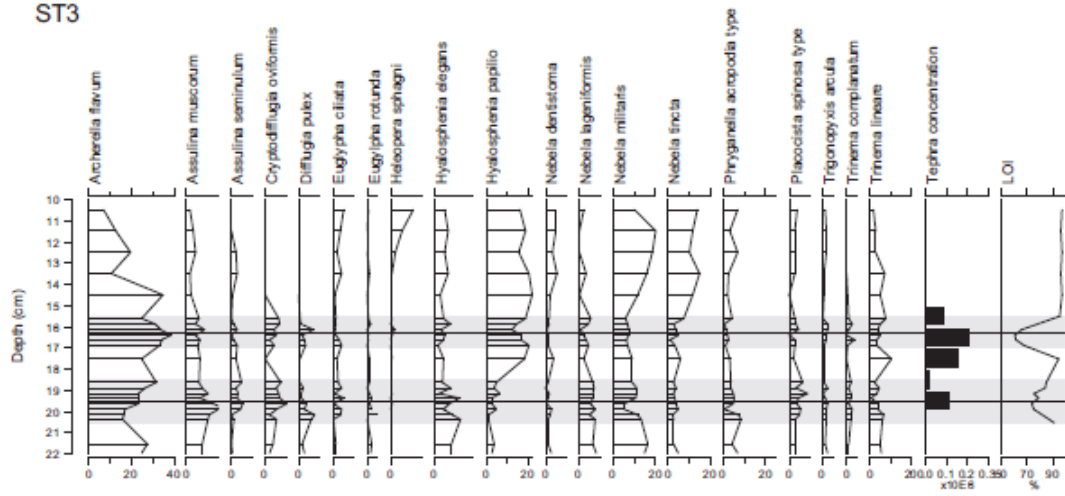


1  
2 Figure 6. Testate amoebae diagrams from six profiles of five monoliths, also showing  
3 plots of tephra concentration and loss on ignition (LOI). Diagrams show major taxa  
4 (>1% total), shaded areas show areas of high resolution sampling and horizontal lines  
5 show tephra peak.

ST2

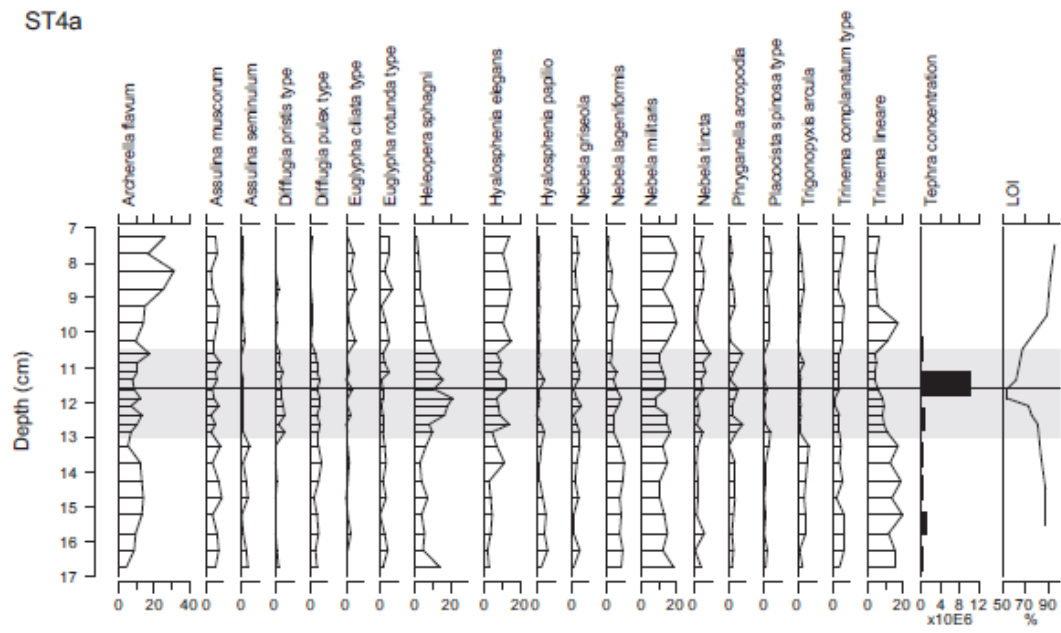


ST3

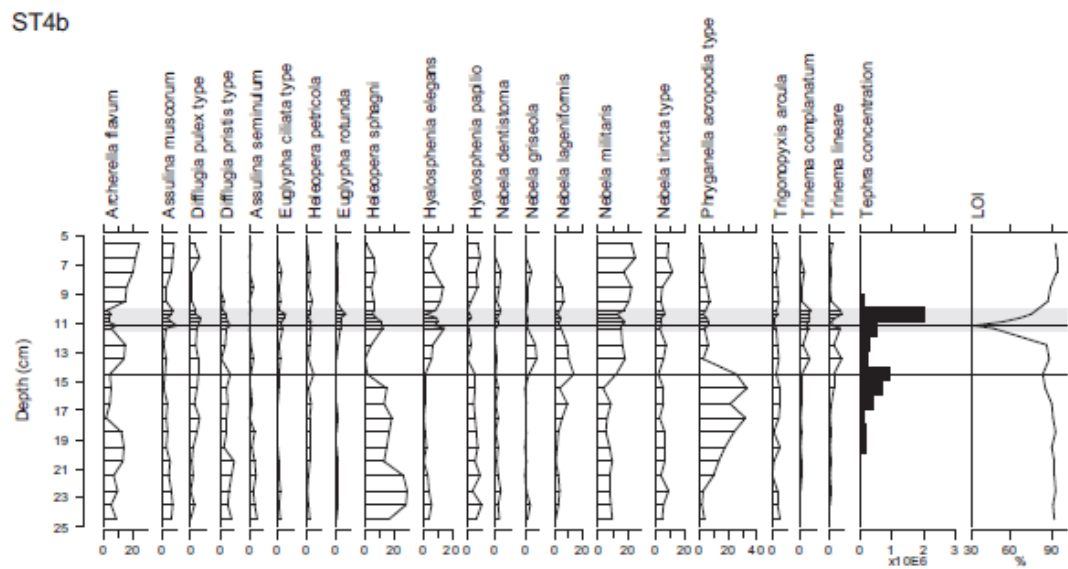


1

ST4a



ST4b



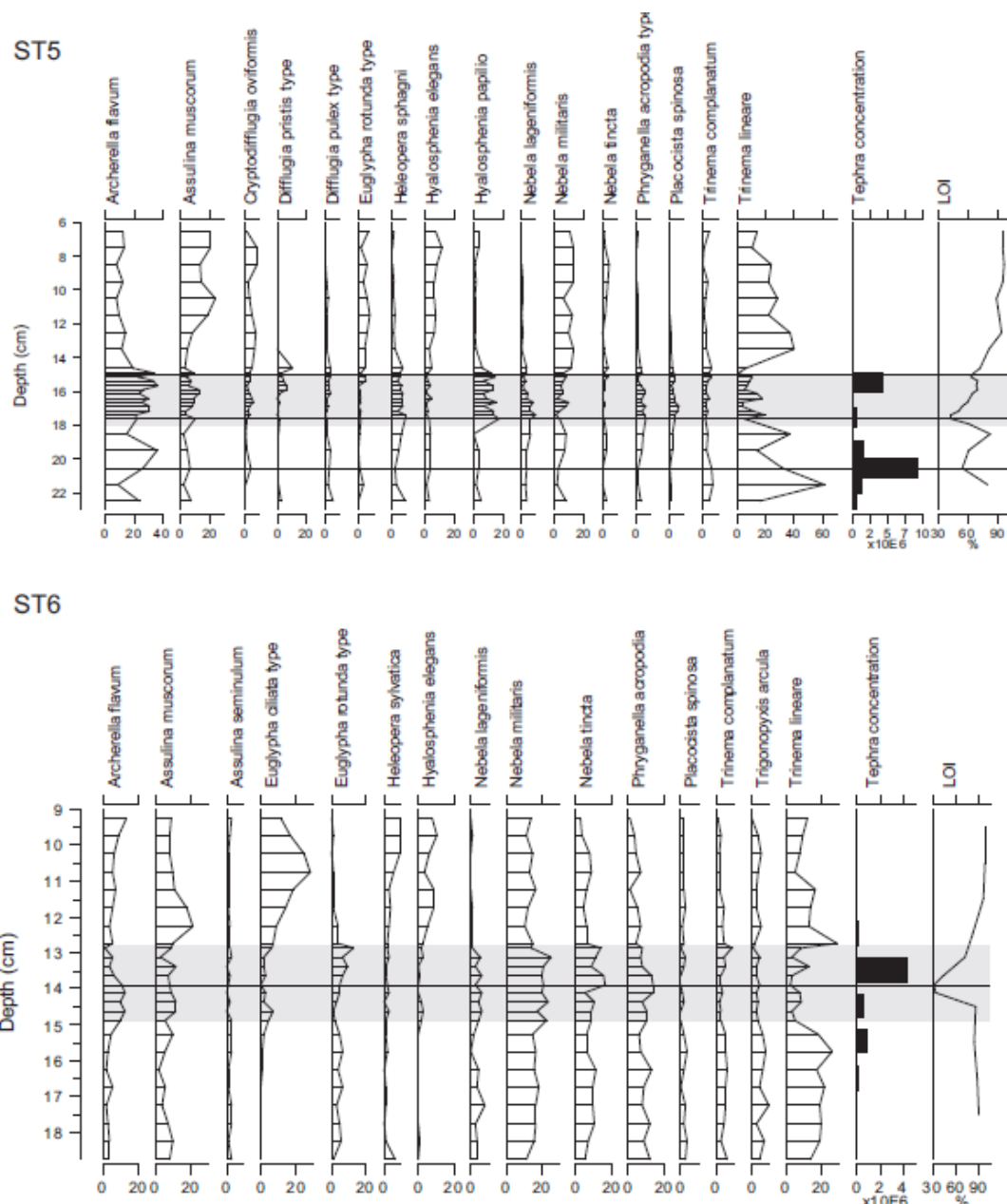


Table 1. EPMA results for three visible tephra layers in this study and most similar comparison data from previous studies. Normalised data is based on 8 major oxides (excluding Manganese and Chlorine, where presented) showing total number of analyses (N). Full (non-normalised) data is presented in Appendix 1. Analyses with totals <95% were excluded following Hunt and Hill (1993). Full details of analytical methodology are given in the methods section of the text.

Table 2. Results of redundancy analysis (RDA) of log-transformed testate amoeba palaeoecological data across tephra layers in 6 profiles. Showing proportion of

1 variance explained by loss on ignition (LOI) and before/after nominal variables for  
2 upper (B/A-A) and lower (B/A-B) tephras with depth as a co-variable and P-values  
3 determined by Monte Carlo permutation tests (999 stratigraphically restricted  
4 permutations).

5

6 Table 3. Changes in testate amoeba community across tephra layers noted in  
7 stratigraphic diagrams (Fig. 6).

8

9 Table 4. Taxa responding positively and negatively to treatment with a) sodium  
10 sulphate (Payne et al. 2010) and b) sulphuric acid (Payne 2010) in previous  
11 experimental studies. Taxa identified using the IndVal technique (Dufrêne and  
12 Legendre 1997) with 999 permutations, showing taxa with IV>40 for treated or  
13 control plots, significant at P=0.01.

14

15 Appendix 1. Electron microprobe data from three tephras. Results as raw percentages,  
16 also showing averages of raw and normalized data.

17



## REFERENCES

- Barker, P., Telford, R., Merdaci, O., Williamson, D., Taieb, M., Vincens, A., Gibert, E., 2000. The sensitivity of a Tanzanian crater lake to catastrophic tephra input and four Millennia of climate change. *The Holocene* 10, 303-10.
- Begét, J.E., Stihler, S.D., Stone, D.B., 1994. A 500-year-long record of tephra falls from Redoubt volcano and other volcanoes in upper Cook Inlet, Alaska. *Journal of Volcanology and Geothermal Research* 62, 55-67.
- Birks, H.J.B., (1998) Numerical tools in palaeolimnology- progress, potentialities and problems. *Journal of Paleolimnology* 20, 307-332
- Birks, H.J.B., Lotter, A.F. (1994) The impact of the Laacher See Volcano (11 000yr B.P.) on terrestrial vegetation and diatoms. *Journal of Paleolimnology* 11, 313-322.
- Borchardt, G.A., Aruscavage, P.J., Millard, H.T. 1972. Correlation of the Bishop ash, a Pleistocene marker bed, using instrumental neutron activation analysis. *Journal of Sedimentary Petrology* 42, 301-306.
- Camuffo, D., Enzi, S., 1995. Impact of clouds of volcanic aerosols in Italy in the past centuries. *Natural Hazards* 11, 135-161.
- Caseldine, C., Hatton, J., Huber, U., Chiverrell, R., Woolley, N., 1998. Assessing the impact of volcanic activity on mid-Holocene climate in Ireland: the need for replicate data. *The Holocene* 8, 105-111.
- Charman, D. J., Hendon, D., Woodland, W. A. 2000. The identification of testate amoebae (Protozoa: Rhizopoda) in peats, Quaternary Research Association, London.
- De Klerk, P., Janke, W., Kühn, P., Theuerkauf, M., 2008. Environmental impact of the Laacher See eruption at a large distance from the volcano: Integrated palaeoecological studies from Vorpommern (NE Germany). *Palaeogeography, Palaeoclimatology, Palaeoecology* 270, 196-214.
- De Vleeschouwer, F., van Vliët Lanoé, B., Fagel, N., 2008. Long term mobilisation of chemical elements in tephra-rich peat (NE Iceland). *Applied Geochemistry* 23, 3819-3839.
- Dise, N.B., Gorham, E., Verry, E.S., 1993. Environmental factors controlling methane emissions from peatlands in northern Minnesota, *Journal of Geophysical Research* 98(D6), 10583-10594.
- Dufrêne, M., Legendre, P., 1997. Species assemblages and indicator species: The need for a flexible asymmetrical approach. *Ecological Monographs* 67, 345-366.

1 Dugmore, A., 1989. Icelandic volcanic ash in Scotland. *Scottish Geographical*  
2 *Magazine* 105, 168-172.

3 Dugmore, A., Larsen, G., Newton, A., 1995. Seven tephra isochrones in Scotland. *The*  
4 *Holocene* 5, 257-266

5 Eastwood, W., Tibby, J., Roberts, N., Birks, H., Lamb, H., 2002. The environmental  
6 impact of the Minoan eruption of Santorini (Thera): statistical analysis of  
7 palaeoecological data from Gölhisar, southwest Turkey. *The Holocene* 12, 431-44.

8 Edwards, K.J., Dugmore A.J., Blackford, J.J., 2004. Vegetational response to tephra  
9 deposition and land-use change in Iceland: a modern analogue and multiple working  
10 hypothesis approach to tephropalynology. *Polar Record* 40, 113-120.

11 Gauci, V., Chapman, S.J., 2006. Simultaneous inhibition of CH<sub>4</sub> efflux and  
12 stimulation of sulphate reduction in peat subject to simulated acid rain. *Soil Biology*  
13 *and Biochemistry* 38, 3506-3510.

14 Gauci, V., Dise, N., Blake, S., 2005. Long-term suppression of wetland methane flux  
15 following a pulse of simulated acid rain. *Geophysical Research Letters* 32, L12804.

16 Gauci, V., Blake, S., Stevenson, D.S., Highwood, E.J., 2008. Halving of the northern  
17 wetland CH<sub>4</sub> source by a large Icelandic volcanic eruption. *Journal of Geophysical*  
18 *Research* 113, G00A11.

19 Gilbert, D., Amblard, C., Bourdier, G., Francez, A., 1998a. The microbial loop at the  
20 surface of a peatland: structure, functioning and impact of nutrients inputs. *Microbial*  
21 *Ecology* 35, 83-93.

22 Gilbert, D., Amblard, C., Bourdier, G., Francez, A.J., 1998b. Short-term effect of  
23 nitrogen enrichment on the microbial communities of a peatland. *Hydrobiologia*  
24 373/374, 111-119.

25 Grattan, J., Brayshay, M., Sadler, J., 1998. Modelling the distal impacts of past  
26 volcanic gas emissions. *Quaternaire* 9, 25-35.

27 Hang, T., Wastegård, S., Veski, S., Heinsalu, A., 2006. First discovery of cryptotephra  
28 in Holocene peat deposits of Estonia, eastern Baltic. *Boreas* 35, 644-649.

29 Hendon, D., Charman, D., 1997. The preparation of testate amoebae (Protozoa:  
30 Rhizopoda) samples from peat. *The Holocene* 7, 199-205.

31 Hotes, S., Poschlod, P., Takahashi, H., Grootjans, A.P., Adema, E., 2004. Effects of  
32 tephra deposition on mire vegetation: a field experiment in Hokkaido, Japan. *Journal*  
33 *of Ecology* 92, 624-634.

1 Hotes, S., Grootjans, A.P., Takahashi, H., Ekschmitt, K., Poschlod, P., 2010.  
2 Resilience and alternative equilibria in a mire plant community after experimental  
3 disturbance by volcanic ash. *Oikos* 119, 952-963.

4 Hunt, J.B., Hill, P.G., 1993. Tephra geochemistry: a discussion of some persistent  
5 analytical problems. *The Holocene* 3, 271-278.

6 Juggins, S., 2003. C2 user guide. Software for ecological and palaeoecological data  
7 analysis and visualisation. University of Newcastle, Newcastle upon Tyne, UK.

8 Langdon, P.G., Barber, K.E. 2004. Snapshots in time: precise correlations of peat  
9 based proxy climate records in Scotland using mid-Holocene tephras. *The Holocene*  
10 14, 21-33.

11 Lotter, A., Birks, H., 1993. The impact of the Laacher See tephra on terrestrial and  
12 aquatic ecosystems in the Black Forest, southern Germany. *Journal of Quaternary*  
13 *Science* 8, 263-276.

14 Lowe, D.J., 2008. Globalization of tephrochronology: new views from Australasia.  
15 *Progress in Physical Geography* 32, 311-335.

16 Lowe, D.J., Hunt, J.B., 2001. A summary of terminology used in tephra-related  
17 studies. In: Juvigné, E.T., Raynal, J-P. (Eds.), *Tephras: Chronology, Archaeology*.  
18 CDERAD éditeur, Goudet. *Les Dossiers de l'Archéo-Logis*. 1, 17-22.

19 Markel, E.R., Booth, R.K., Qin, Y., 2010. Testate amoebae and  $\delta^{13}\text{C}$  of *Sphagnum* as  
20 surface-moisture proxies in Alaskan peatlands. *The Holocene* 20, 463-475.

21 Meisterfeld, R., Heisterbaum, M., 1986. The decay of empty tests of testate amoebae  
22 (Rhizopoda, Protozoa). *Symposia Biologica Hungarica* 33, 285-290.

23 Mitchell, E.A.D., Payne, R.J., Lamentowicz, M., 2008. Potential implications of  
24 differential preservation of testate amoeba shells for paleoenvironmental  
25 reconstruction in peatlands. *Journal of Paleolimnology* 40, 603-618.

26 Murase, J., Frenzel, P., 2008. Selective grazing of methanotrophs by protozoa in a rice  
27 field soil. *FEMS Microbiology Ecology* 65, 408-414.

28 Nguyen-Viet, H., Bernard, N., Mitchell, E.A.D., Cortet, J., Badot, P.-M., Gilbert, D.,  
29 2007. Relationship between testate amoeba (Protist) communities and atmospheric  
30 heavy metals accumulated in *Barbula indica* (Bryophyta) in Vietnam. *Microbial*  
31 *Ecology* 53, 53-65.

32 Nguyen-Viet, H., Bernard, N., Mitchell, E.A.D., Badot, P.M., Gilbert, D., 2008.  
33 Effect of lead pollution on testate amoebae communities living in *Sphagnum fallax*:  
34 An experimental study. *Ecotoxicology and Environmental Safety* 69, 130-138.

1 Payne, R., 2009. The standard preparation method for testate amoebae leads to  
2 selective loss of the smallest shells. *Quaternary Newsletter* 119, 16-20.

3 Payne, R., 2010. Testate amoeba response to acid deposition in a Scottish peatland.  
4 *Aquatic Ecology* 44, 373-385.

5 Payne, R., Blackford, J., 2005. Simulating the impacts of distal volcanic products  
6 upon peatlands in northern Britain: an experimental study on the Moss of Achnacree,  
7 Scotland. *Journal of Archaeological Science* 32, 989-1001.

8 Payne, R., Blackford, J., 2008a. Volcanic impacts on peatlands: Palaeoecological  
9 evidence from Alaska. *Quaternary Science Reviews* 27, 2012-2030.

10 Payne, R., Blackford, J., 2008b. Extending the late Holocene tephrochronology of the  
11 Kenai Peninsula, Alaska. *Arctic* 61, 243-254.

12 Payne, R., Mitchell, E., 2009. How many is enough? Determining adequate count  
13 totals for ecological and palaeoecological studies of testate amoebae. *Journal of*  
14 *Paleolimnology* 42, 483-495.

15 Payne, R., Kishaba, K., Blackford, J., Mitchell, E., 2006. The ecology of testate  
16 amoebae in southcentral Alaskan peatlands: Building transfer function models for  
17 palaeoenvironmental inference. *The Holocene* 16, 403-414.

18 Payne, R., Charman, D., Gauci, V., 2010. The impact of simulated sulfate deposition  
19 on peatland testate amoebae, *Microbial Ecology* 59, 76-83.

20 Persson, C., 1971. Tephrochronological investigations of peat deposits in Scandinavia  
21 and on the Faroe Islands. *Sveriges Geologiska Undersokning* 65, 3-34.

22 Pilcher, J., Hall, V., 1992. Towards a tephrochronology for the Holocene of the north  
23 of Ireland. *The Holocene* 2, 255-259.

24 Pilcher, J., Bradley, R.S., Francus, P., Anderson, L., 2005. A Holocene tephra record  
25 from the Lofoten Islands, Arctic Norway. *Boreas* 34, 136-156.

26 Pollard, A.M., Blockley, S.P.E., Ward, K.R., 2003. Chemical alteration of tephra in  
27 the depositional environment: theoretical stability modelling. *Journal of Quaternary*  
28 *Science* 18, 385-394.

29 Riehle, J.R., 1985. A reconnaissance of the major Holocene tephra deposits in the  
30 upper Cook Inlet, Alaska. *Journal of Volcanology and Geothermal Research* 26, 37-  
31 54.

32 Segers, R., 1998. Methane production and methane consumption: a review of  
33 processes underlying wetland methane fluxes. *Biogeochemistry* 41, 23-51.

- 1 Shannon, R.D., White, J.R., 1994. A three-year study of controls on methane
- 2 emissions from two Michigan peatlands. *Biogeochemistry* 27, 35-60.
- 3 Smith, H.G., 1974. The colonization of volcanic tephra on Deception Island by
- 4 protozoa. *British Antarctic Survey Bulletin* 38, 49-58.
- 5 Smith, H.G., 1985. The colonization of volcanic tephra on Deception Island by
- 6 protozoa: Long-term trends. *British Antarctic Survey Bulletin* 66, 19-33.
- 7 Swindles, G.T., Roe, H.M. 2007. Examining the dissolution characteristics of testate
- 8 amoebae (Protozoa: Rhizopoda) in low pH conditions: Implications for peatland
- 9 palaeoclimate studies. *Palaeogeography, Palaeoclimatology, Palaeoecology* 252, 486-
- 10 496.
- 11 Swindles, G., De Vleeschouwer, F., Plunkett, G., (2010) Dating peat profiles using
- 12 tephra: stratigraphy, geochemistry and chronology. *Mires and Peat* 7, 1-9.
- 13 Ter Braak, C., Šmilauer, P., 1997-2004. CANOCO for Windows. Biometris-Plant
- 14 Research, The Netherlands.
- 15 Wall, A.A.J., Gilbert, D., Magny, M., Mitchell, E.A.D., 2009. Testate amoeba
- 16 analysis of lake sediments: impact of filter size and total count on estimates of
- 17 density, species richness and assemblage structure, *Journal of Paleolimnology* 43,
- 18 689-704.
- 19 Warner, B.G., 1990. Testate Amoebae (Protozoa). *Methods in Quaternary ecology.*
- 20 *Geoscience, Canada* 5. Geological Association of Canada. 65-74.
- 21 Woodland, W., Charman, D., Simms, P. 1998. Quantitative estimates of water tables
- 22 and soil moisture in Holocene peatlands from testate amoebae, *The Holocene* 8, 261-
- 23 273.
- 24 Yeloff, D., Mauquoy, D., Barber, K., van Geel, B., Turney, C.S.M. 2007. Volcanic
- 25 ash deposition and long-term vegetation change on subantarctic Marion Island. *Arctic,*
- 26 *Antarctic and Alpine Research* 39, 500–511.